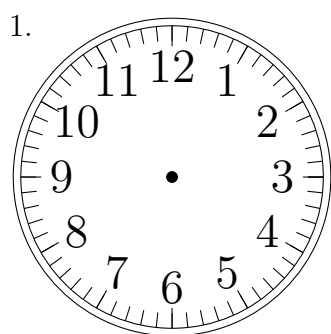
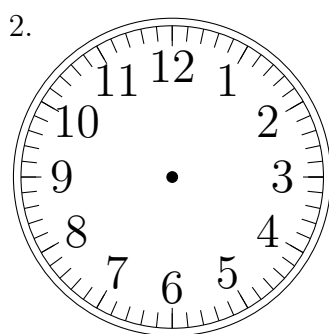


Place d'Aiguilles sur une Horloge Analogique (D)

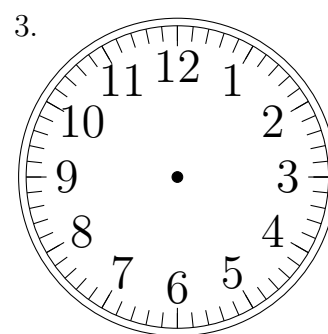
Placer les aiguilles de l'horloge pour qu'elles montrent le temps indiqué.



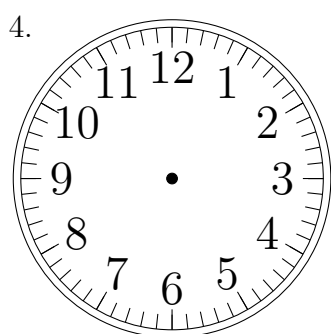
6:00:00



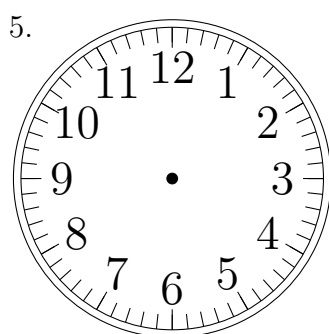
9:00:00



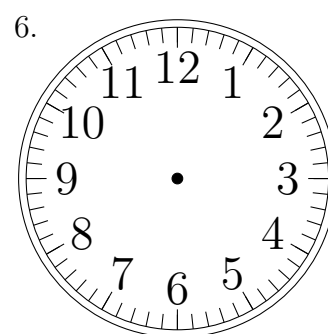
5:00:00



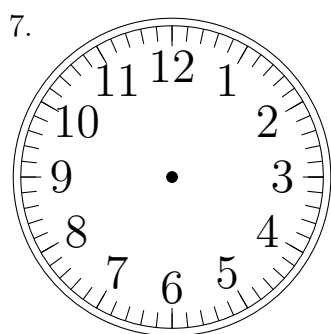
12:00:00



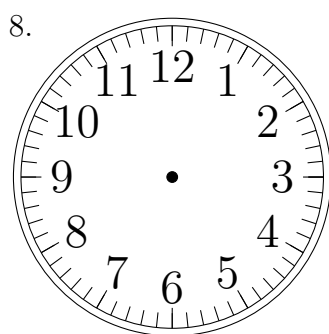
3:00:00



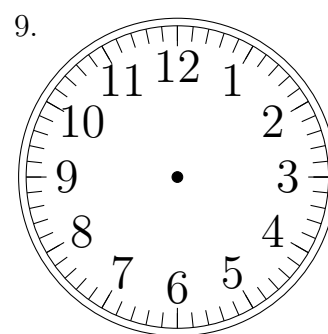
2:00:00



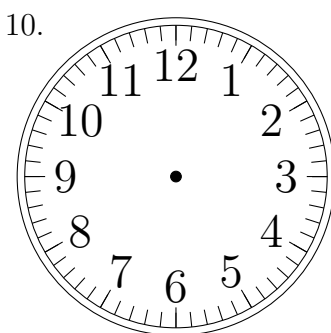
1:00:00



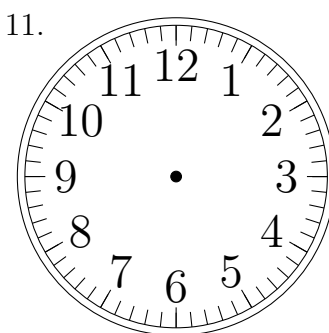
5:00:00



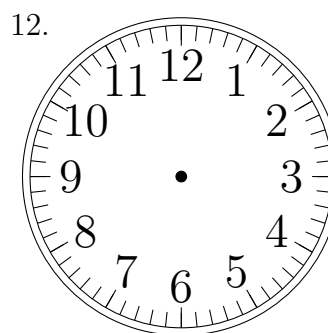
7:00:00



3:00:00



8:00:00

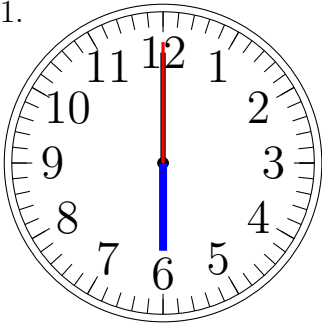


7:00:00

Place d'Aiguilles sur une Horloge Analogique (D) Solutions

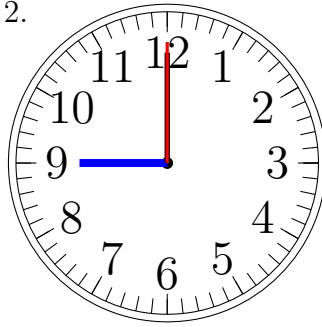
Placer les aiguilles de l'horloge pour qu'elles montrent le temps indiqué.

1.



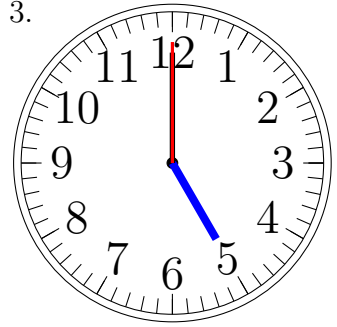
6:00:00

2.



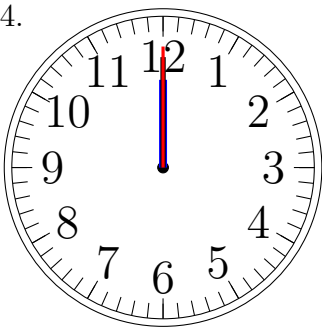
9:00:00

3.



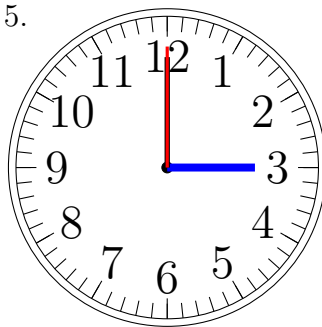
5:00:00

4.



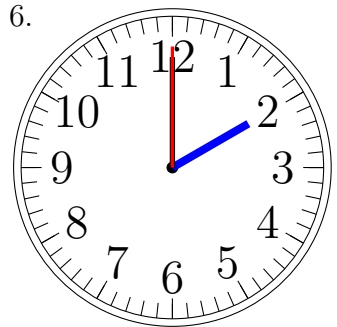
12:00:00

5.



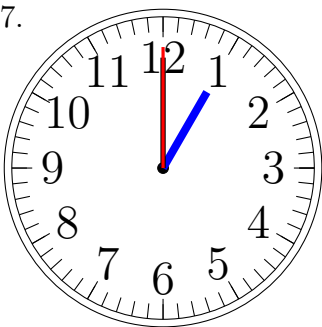
3:00:00

6.



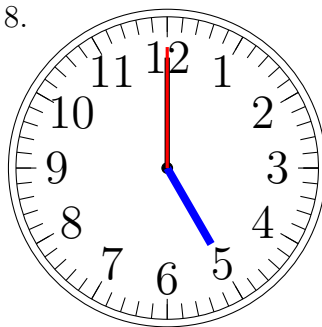
2:00:00

7.



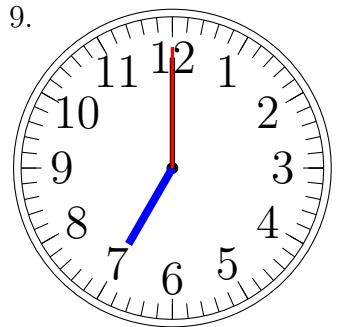
1:00:00

8.



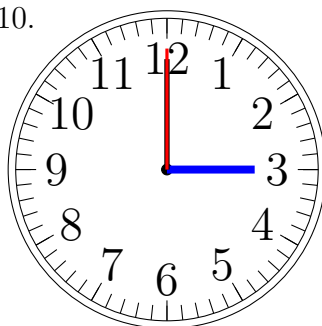
5:00:00

9.



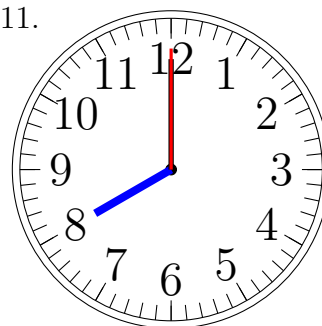
7:00:00

10.



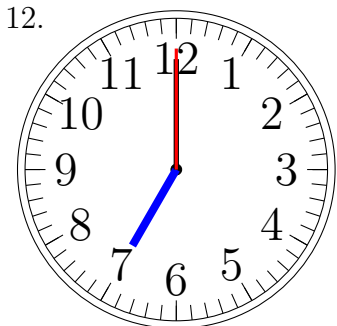
3:00:00

11.



8:00:00

12.



7:00:00