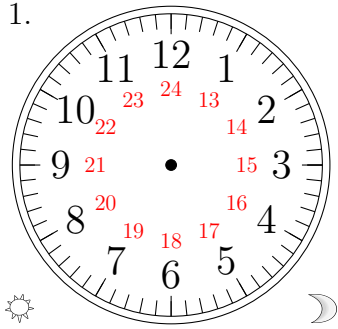


Place d'Aiguilles sur une Horloge Analogique (A)

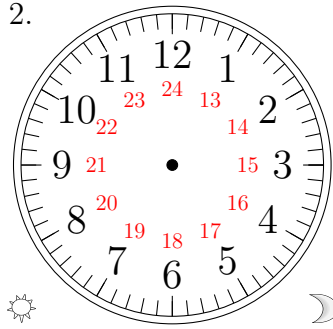
Placer les aiguilles de l'horloge pour qu'elles montrent le temps indiqué.

1.



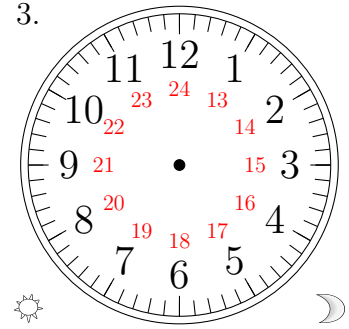
23:30:30

2.



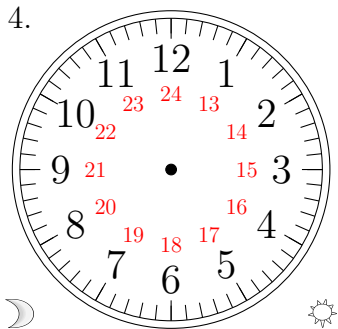
13:00:00

3.



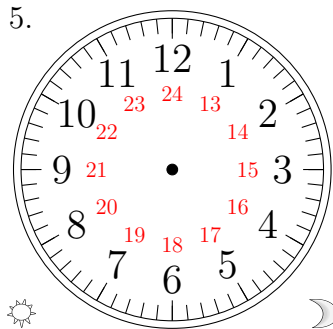
20:00:00

4.



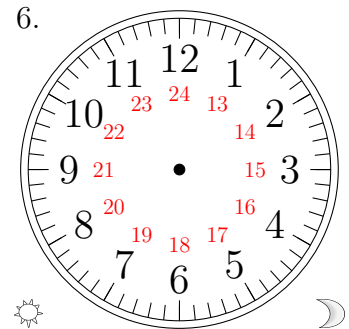
03:00:00

5.



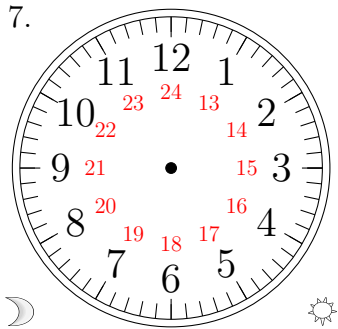
16:30:30

6.



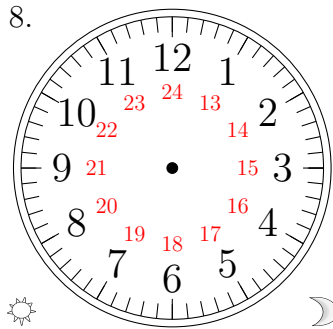
17:30:30

7.



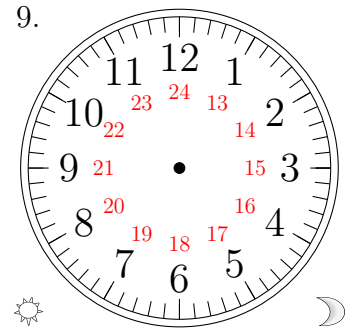
10:00:30

8.



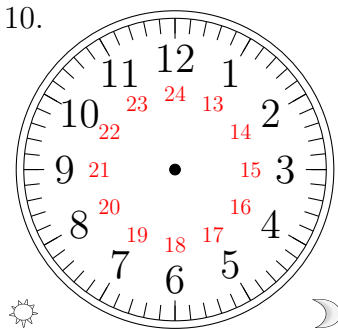
14:00:00

9.



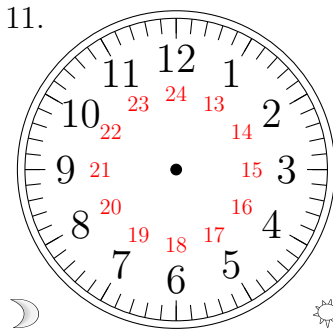
15:30:00

10.



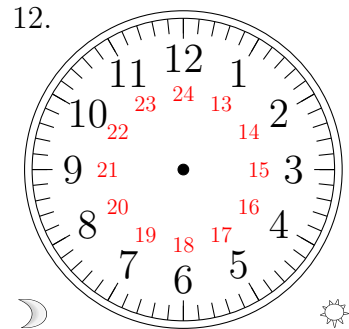
12:30:00

11.



11:30:30

12.

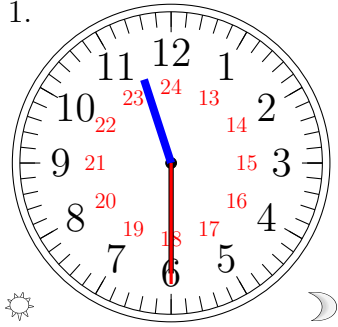


01:00:30

Place d'Aiguilles sur une Horloge Analogique (A) Solutions

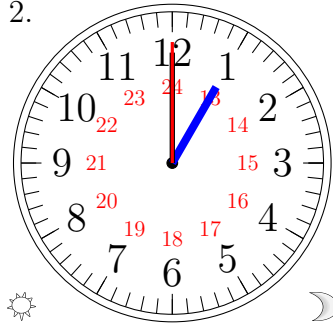
Placer les aiguilles de l'horloge pour qu'elles montrent le temps indiqué.

1.



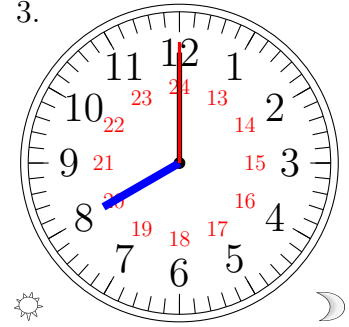
23:30:30

2.



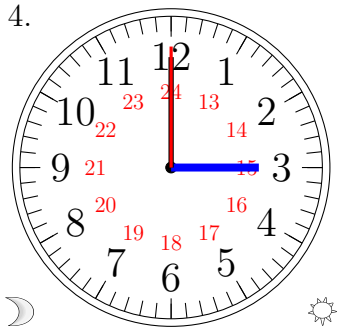
13:00:00

3.



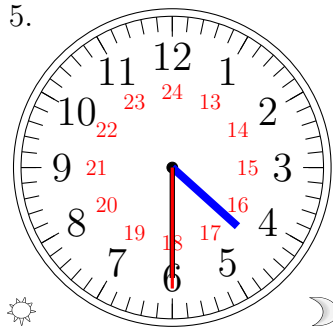
20:00:00

4.



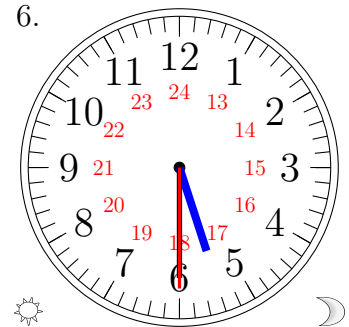
03:00:00

5.



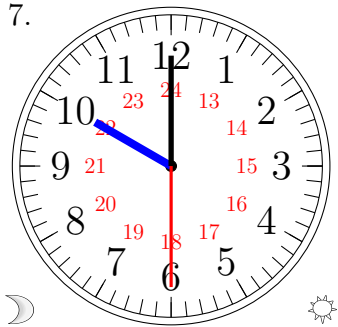
16:30:30

6.



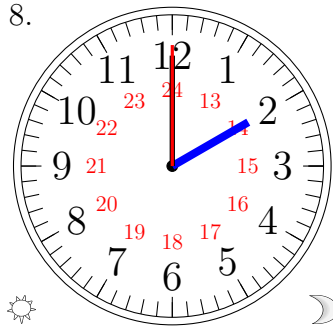
17:30:30

7.



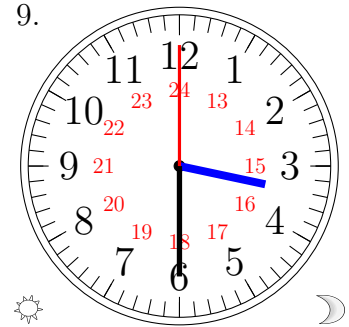
10:00:30

8.



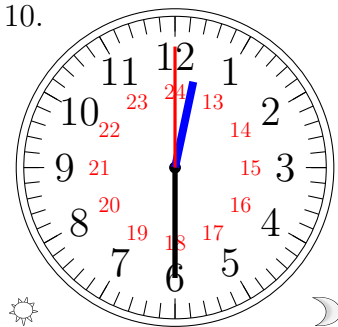
14:00:00

9.



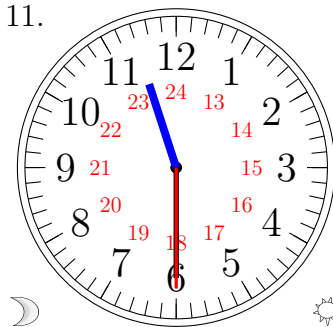
15:30:00

10.



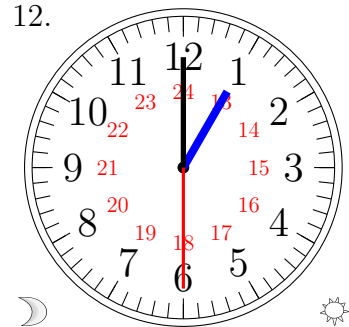
12:30:00

11.



11:30:30

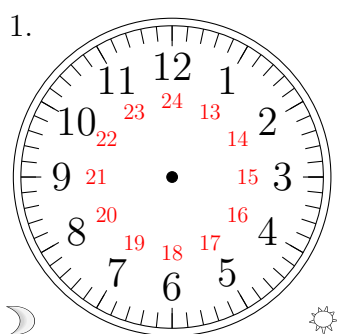
12.



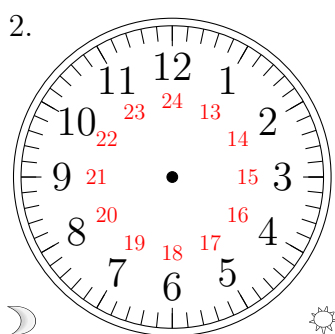
01:00:30

Place d'Aiguilles sur une Horloge Analogique (B)

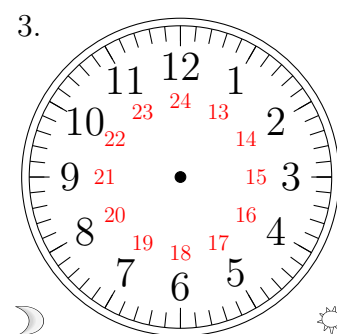
Placer les aiguilles de l'horloge pour qu'elles montrent le temps indiqué.



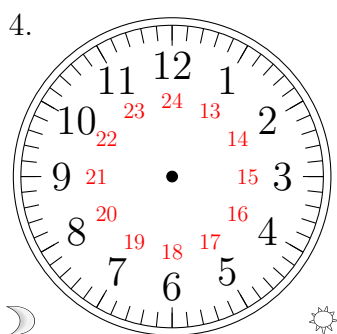
07:30:30



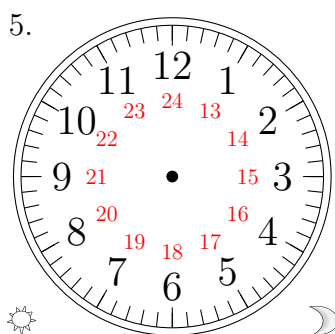
04:00:00



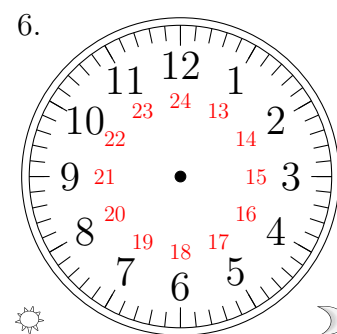
05:00:30



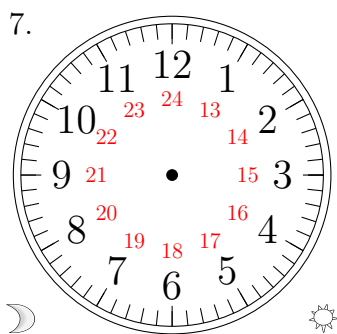
03:00:00



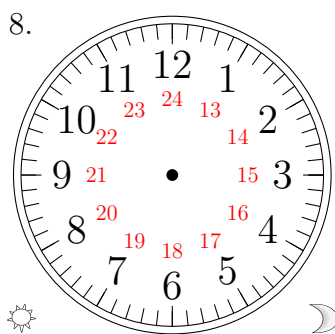
23:30:30



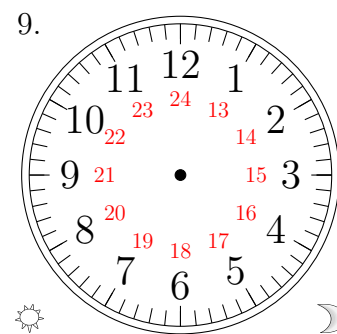
13:30:00



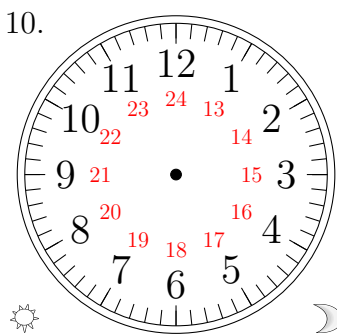
11:00:30



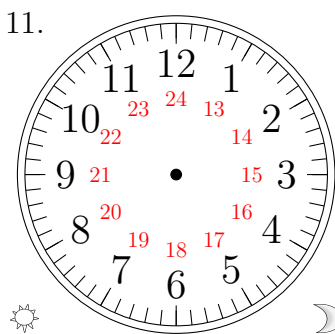
14:00:00



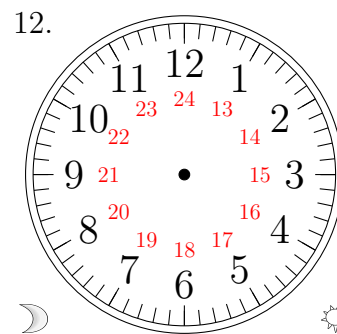
17:00:00



20:30:00



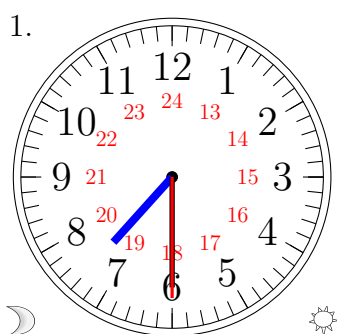
16:30:30



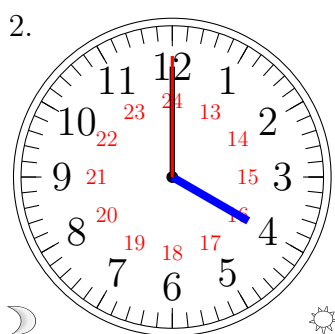
10:30:30

Place d'Aiguilles sur une Horloge Analogique (B) Solutions

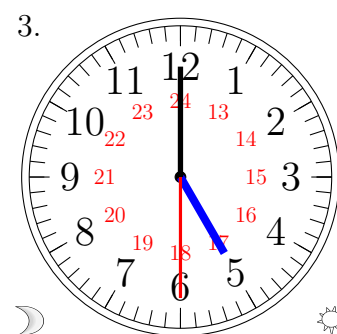
Placer les aiguilles de l'horloge pour qu'elles montrent le temps indiqué.



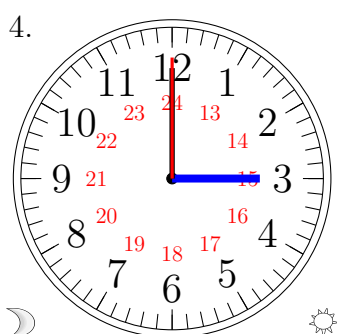
07:30:30



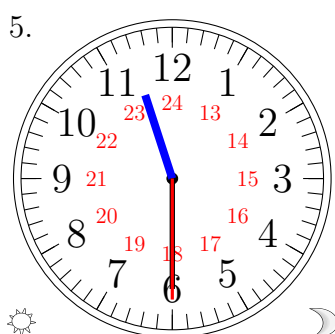
04:00:00



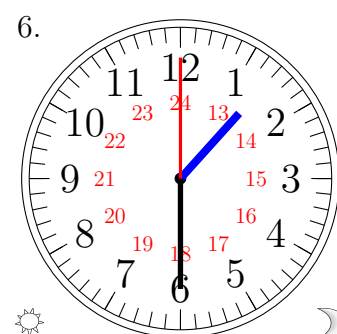
05:00:30



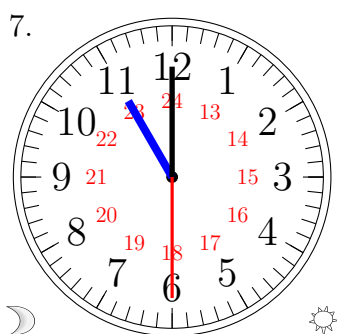
03:00:00



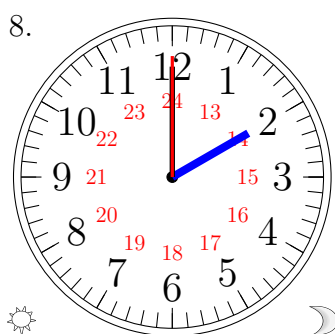
23:30:30



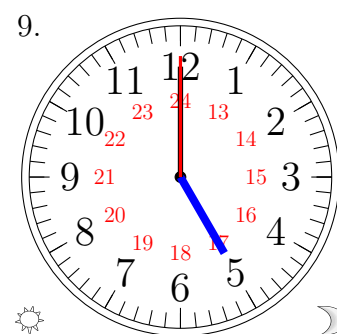
13:30:00



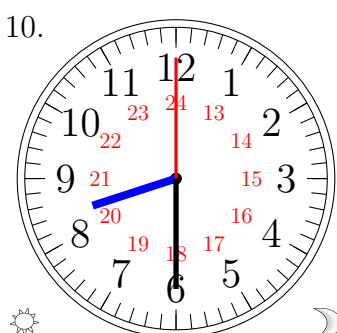
11:00:30



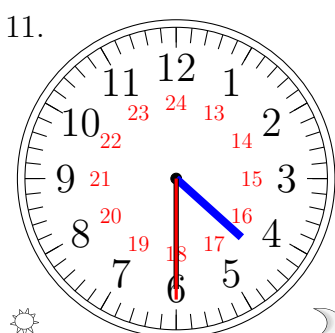
14:00:00



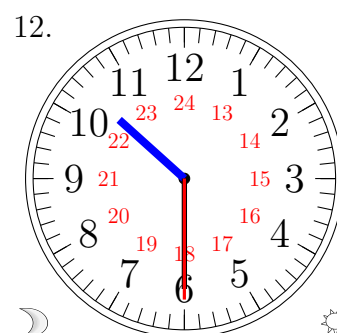
17:00:00



20:30:00



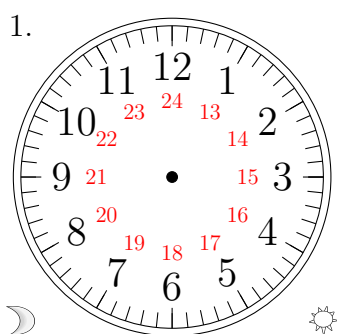
16:30:30



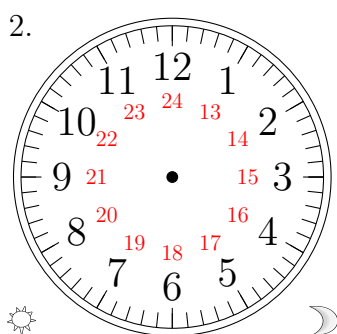
10:30:30

Place d'Aiguilles sur une Horloge Analogique (C)

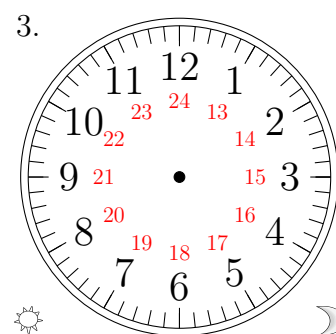
Placer les aiguilles de l'horloge pour qu'elles montrent le temps indiqué.



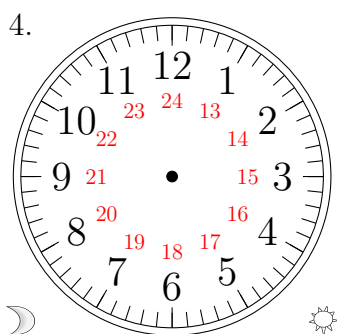
03:00:30



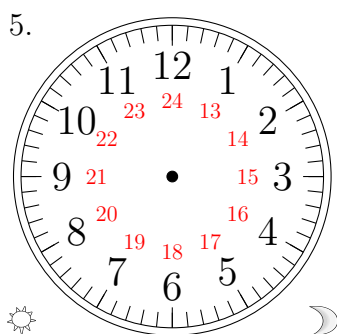
17:00:00



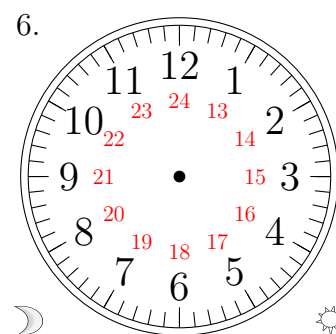
18:30:30



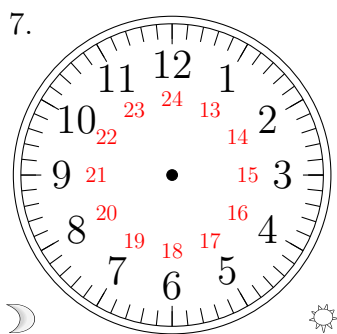
07:30:00



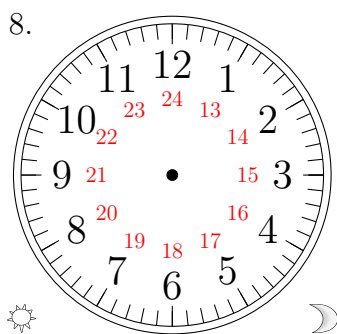
16:30:30



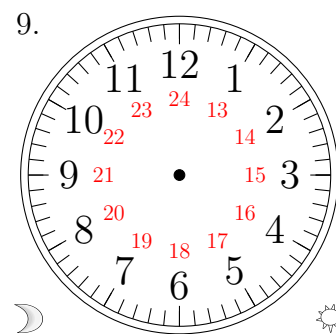
06:00:00



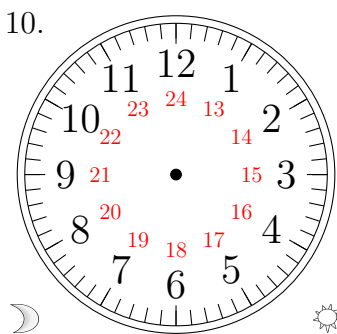
10:30:00



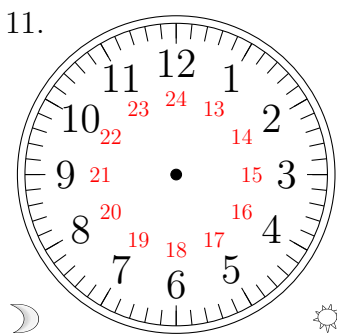
23:30:00



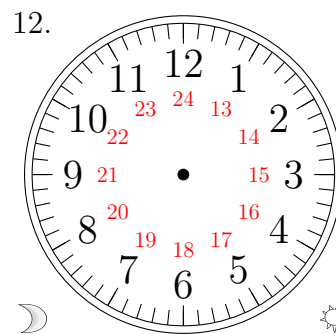
09:00:00



11:00:30



02:00:30

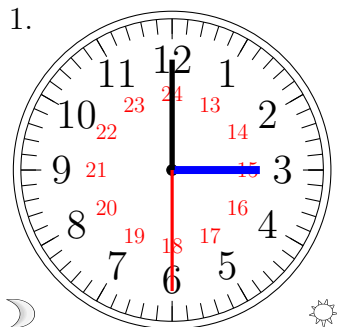


05:30:30

Place d'Aiguilles sur une Horloge Analogique (C) Solutions

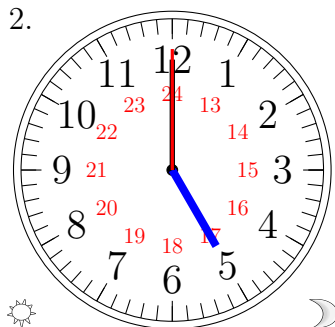
Placer les aiguilles de l'horloge pour qu'elles montrent le temps indiqué.

1.



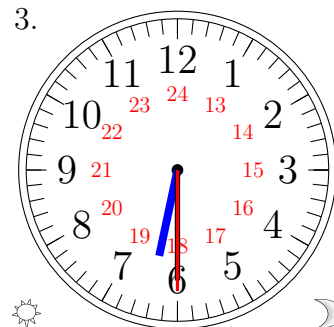
03:00:30

2.



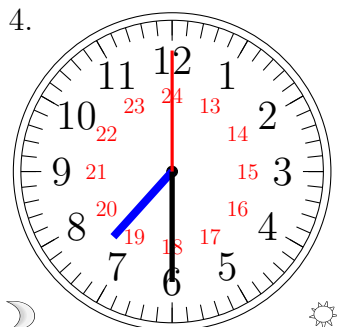
17:00:00

3.



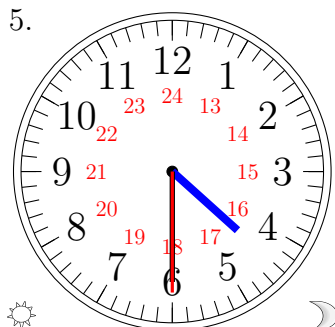
18:30:30

4.



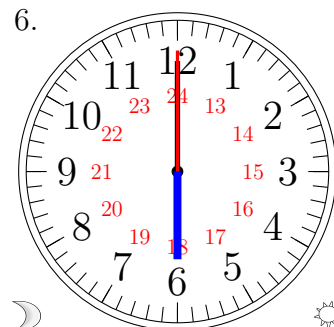
07:30:00

5.



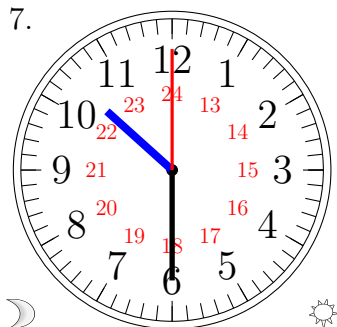
16:30:30

6.



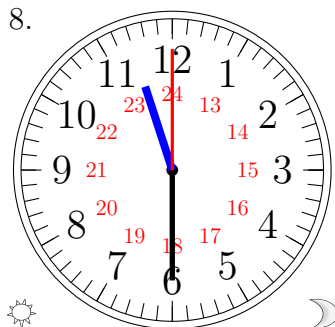
06:00:00

7.



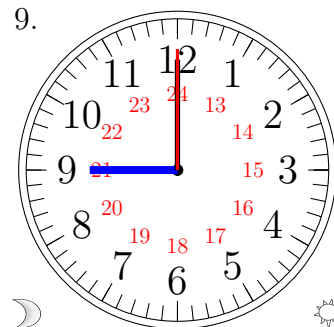
10:30:00

8.



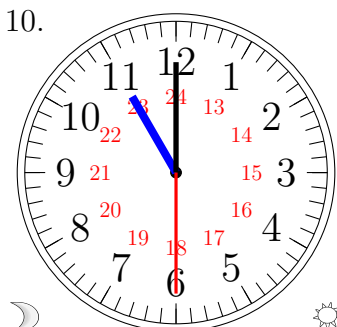
23:30:00

9.



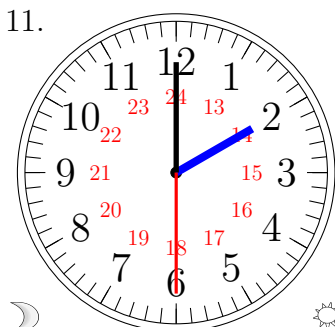
09:00:00

10.



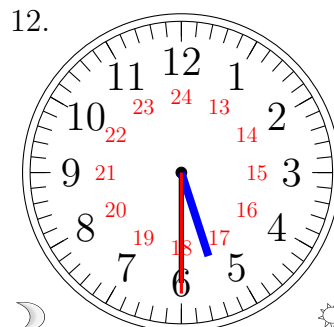
11:00:30

11.



02:00:30

12.

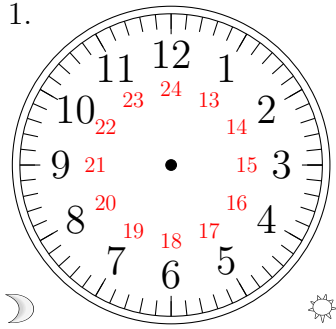


05:30:30

Place d'Aiguilles sur une Horloge Analogique (D)

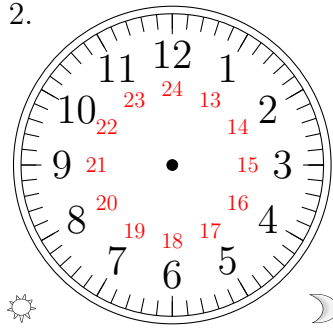
Placer les aiguilles de l'horloge pour qu'elles montrent le temps indiqué.

1.



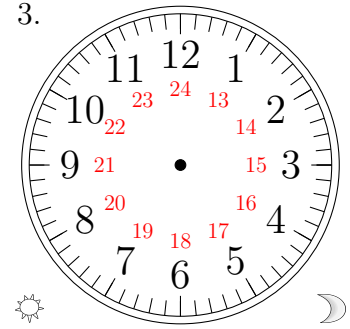
05:30:00

2.



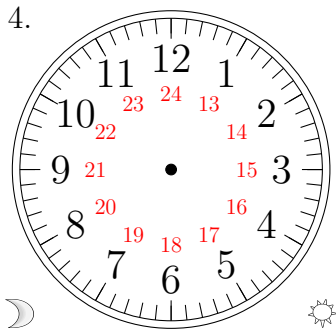
14:00:30

3.



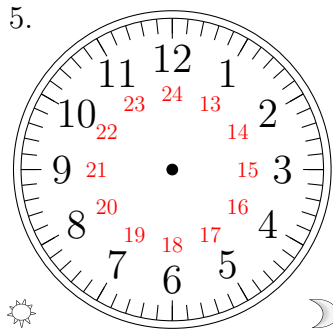
15:00:30

4.



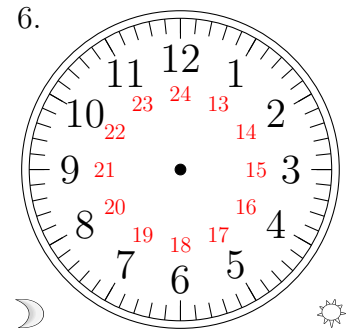
07:00:30

5.



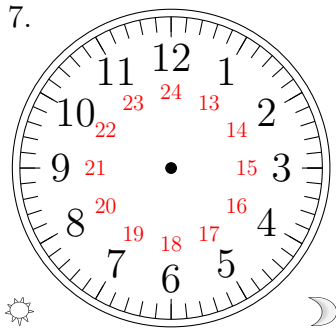
23:30:00

6.



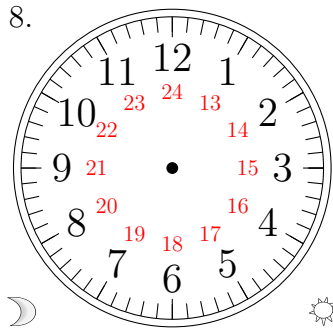
11:30:00

7.



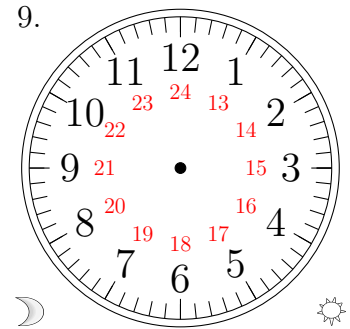
18:00:30

8.



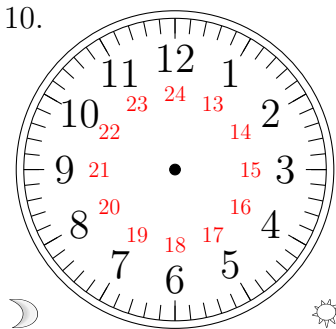
01:00:00

9.



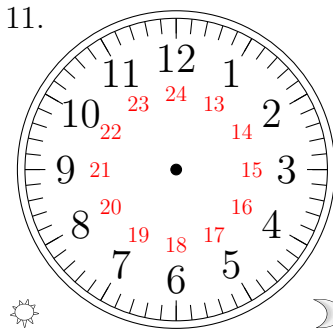
03:30:30

10.



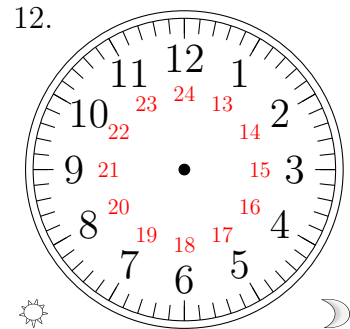
02:30:00

11.



13:30:30

12.

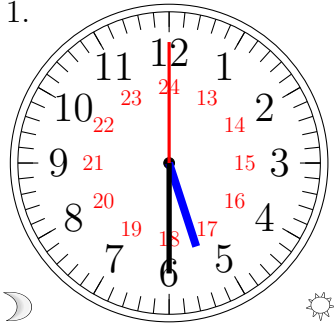


16:00:00

Place d'Aiguilles sur une Horloge Analogique (D) Solutions

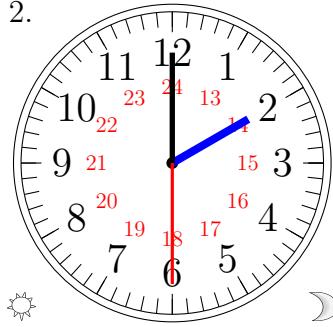
Placer les aiguilles de l'horloge pour qu'elles montrent le temps indiqué.

1.



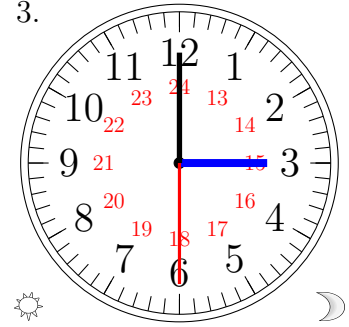
05:30:00

2.



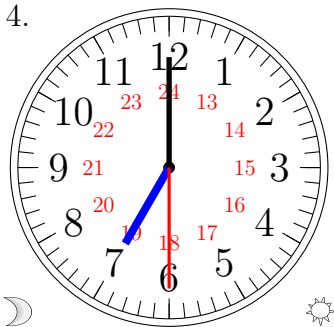
14:00:30

3.



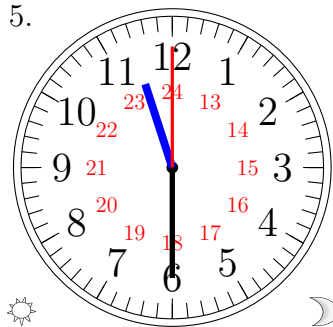
15:00:30

4.



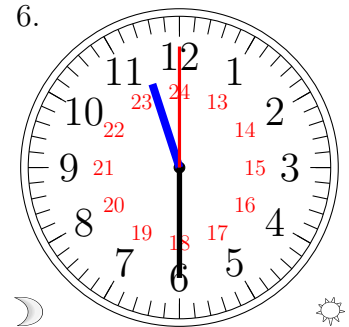
07:00:30

5.



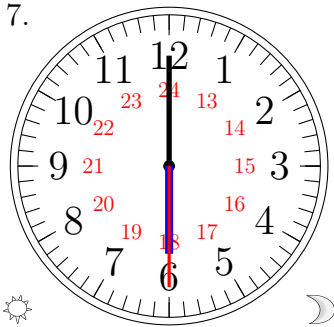
23:30:00

6.



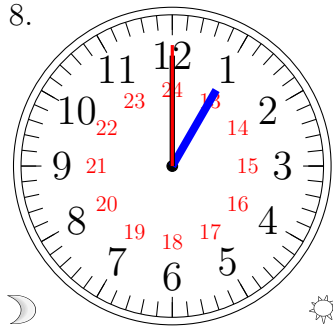
11:30:00

7.



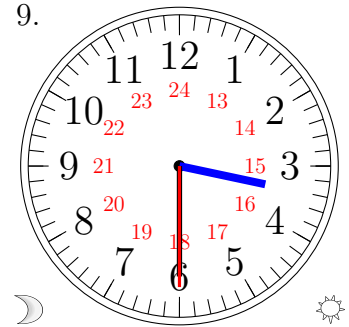
18:00:30

8.



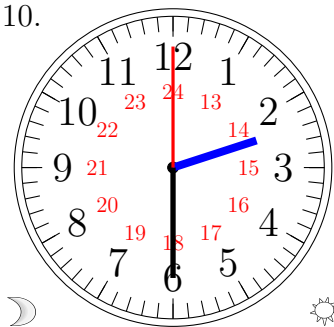
01:00:00

9.



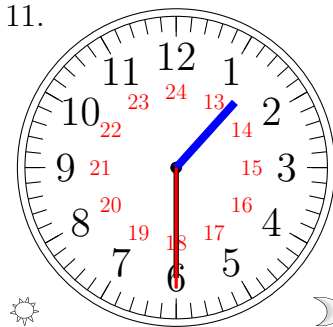
03:30:30

10.



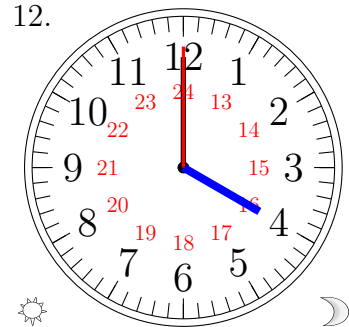
02:30:00

11.



13:30:30

12.

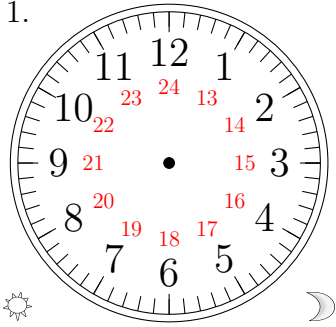


16:00:00

Place d'Aiguilles sur une Horloge Analogique (E)

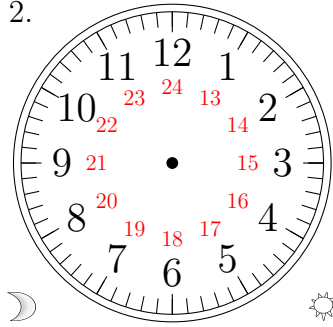
Placer les aiguilles de l'horloge pour qu'elles montrent le temps indiqué.

1.



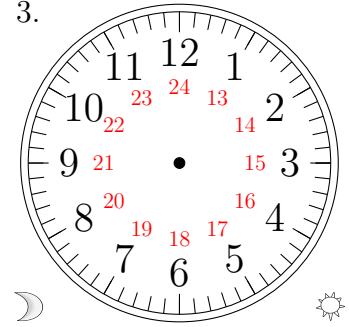
16:00:30

2.



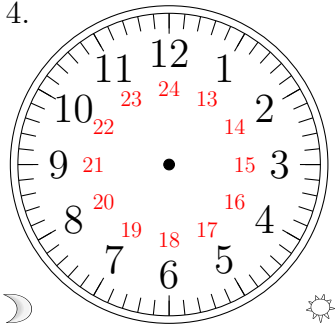
05:30:00

3.



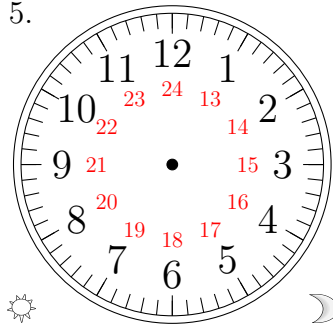
10:30:30

4.



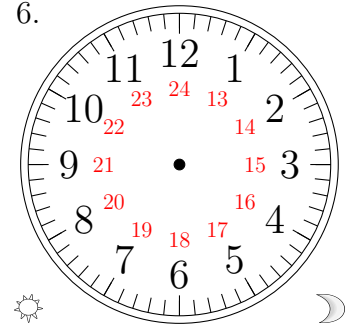
06:30:00

5.



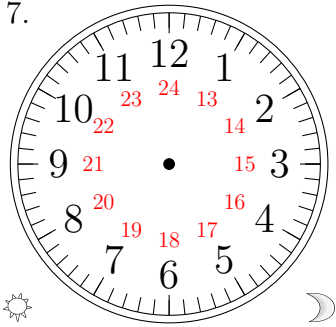
13:00:30

6.



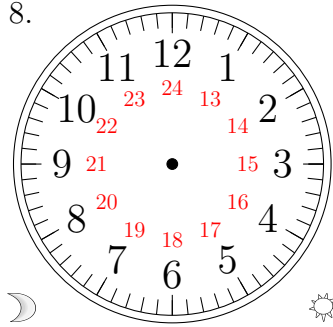
21:00:00

7.



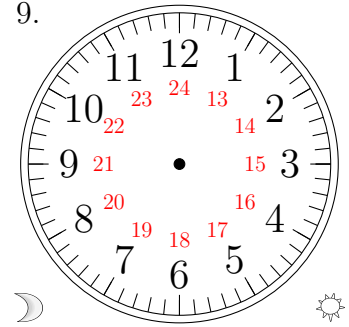
18:00:30

8.



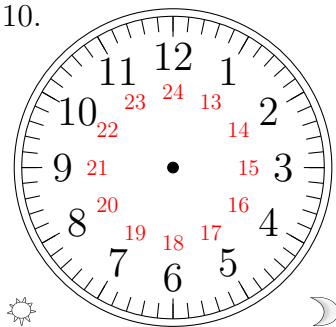
07:00:00

9.



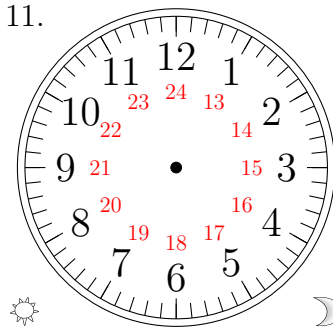
08:30:00

10.



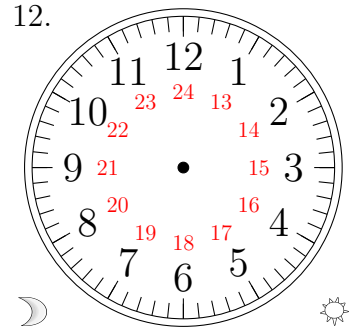
17:30:00

11.



22:30:30

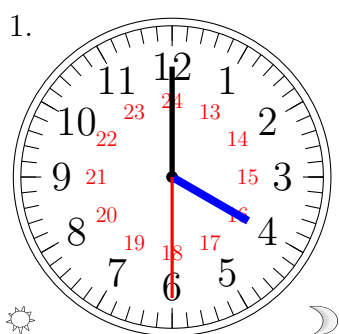
12.



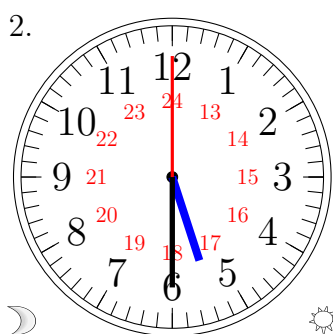
02:00:30

Place d'Aiguilles sur une Horloge Analogique (E) Solutions

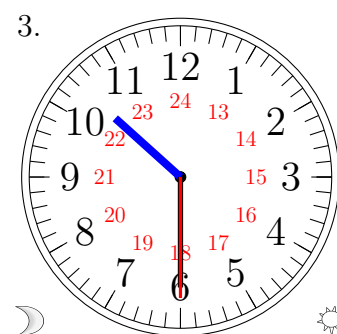
Placer les aiguilles de l'horloge pour qu'elles montrent le temps indiqué.



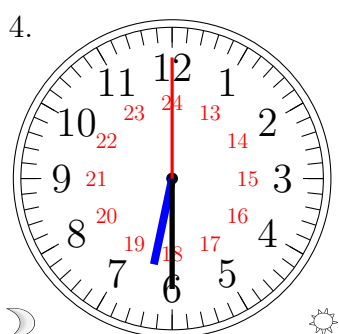
16:00:30



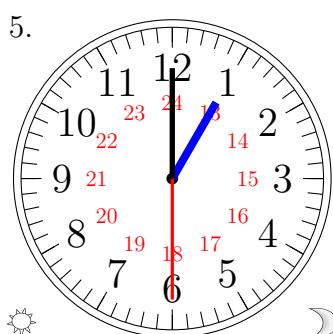
05:30:00



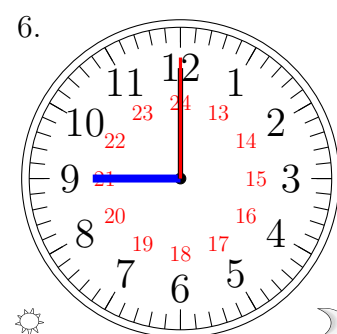
10:30:30



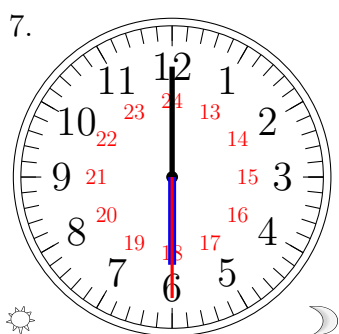
06:30:00



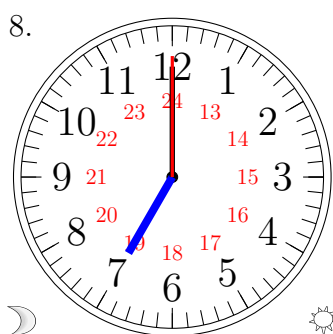
13:00:30



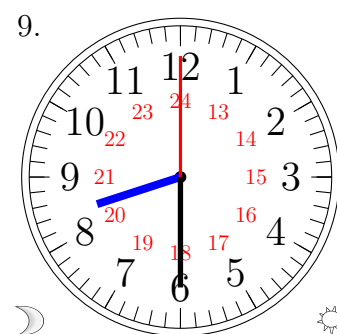
21:00:00



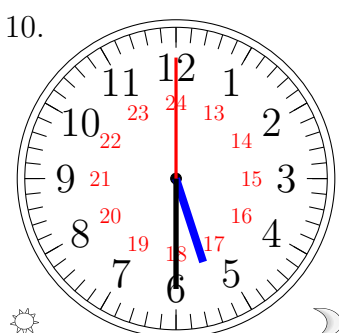
18:00:30



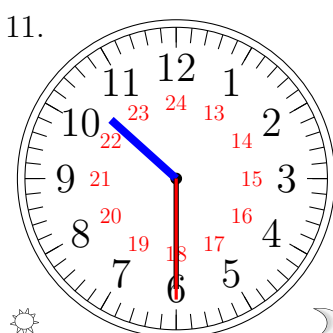
07:00:00



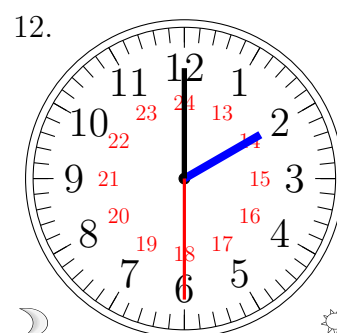
08:30:00



17:30:00



22:30:30

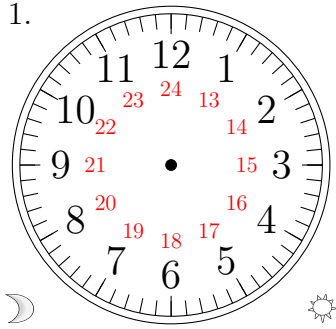


02:00:30

Place d'Aiguilles sur une Horloge Analogique (F)

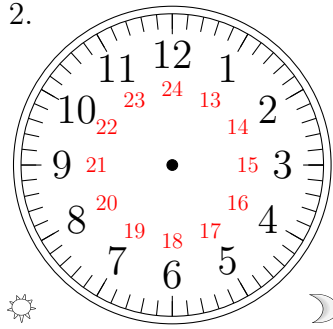
Placer les aiguilles de l'horloge pour qu'elles montrent le temps indiqué.

1.



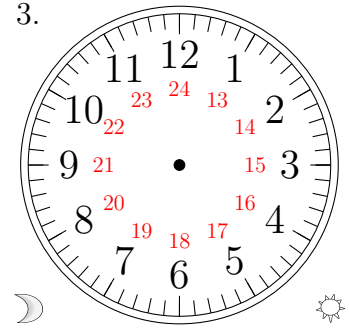
07:30:00

2.



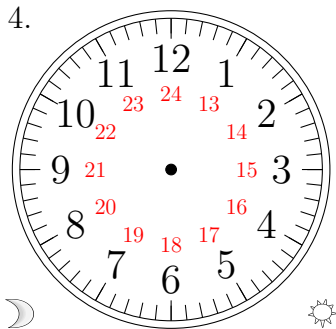
22:30:00

3.



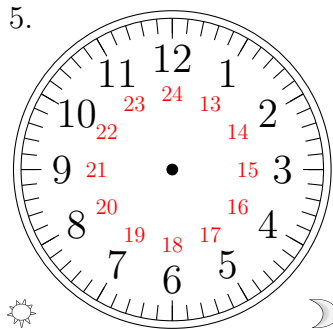
00:00:30

4.



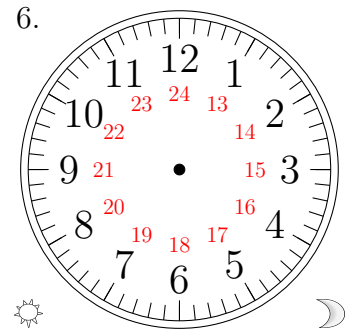
05:00:30

5.



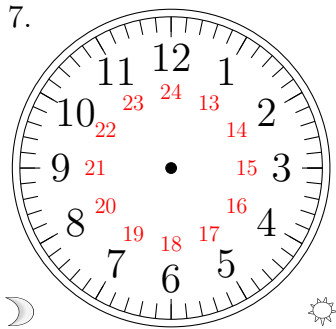
15:00:30

6.



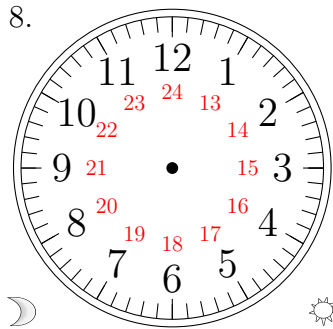
16:30:00

7.



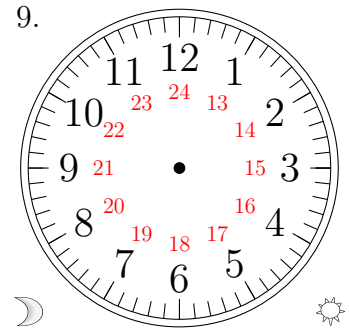
10:30:30

8.



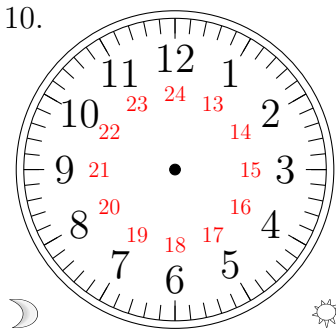
03:30:00

9.



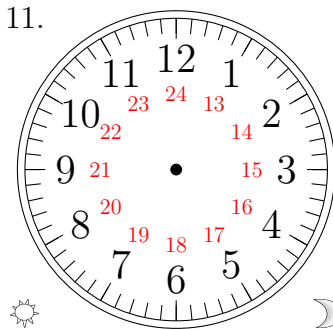
06:30:30

10.



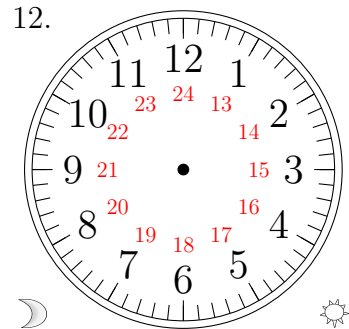
11:00:00

11.



18:00:30

12.

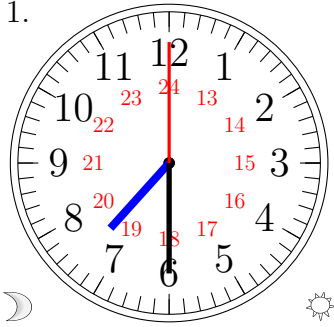


02:00:00

Place d'Aiguilles sur une Horloge Analogique (F) Solutions

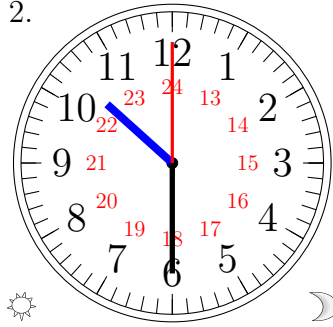
Placer les aiguilles de l'horloge pour qu'elles montrent le temps indiqué.

1.



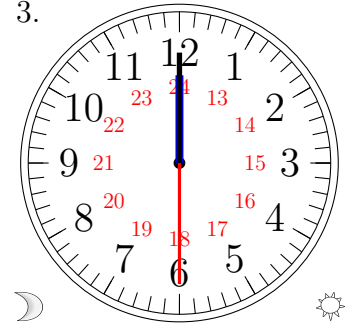
07:30:00

2.



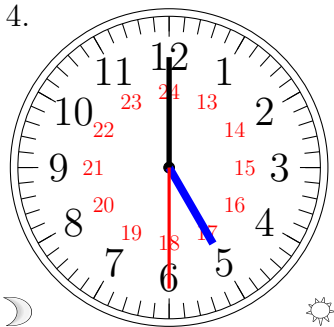
22:30:00

3.



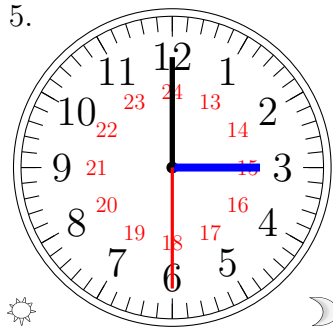
00:00:30

4.



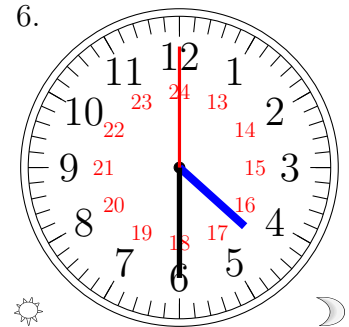
05:00:30

5.



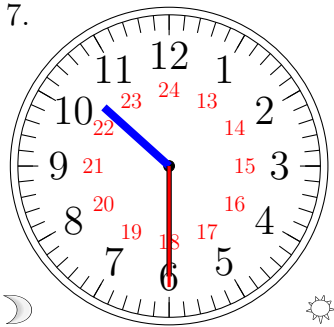
15:00:30

6.



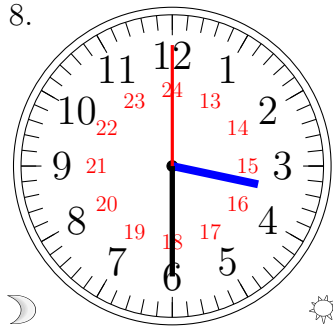
16:30:00

7.



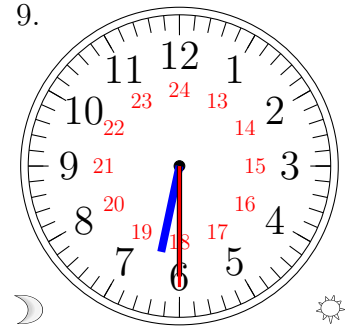
10:30:30

8.



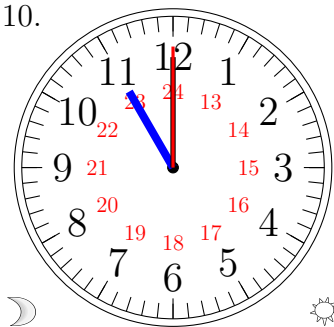
03:30:00

9.



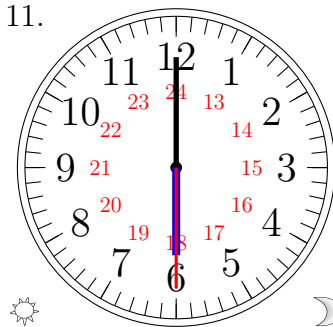
06:30:30

10.



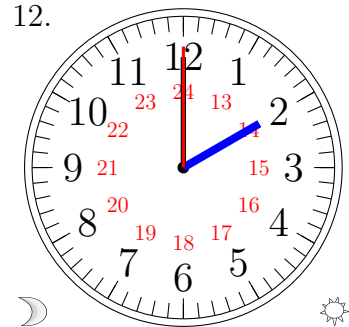
11:00:00

11.



18:00:30

12.

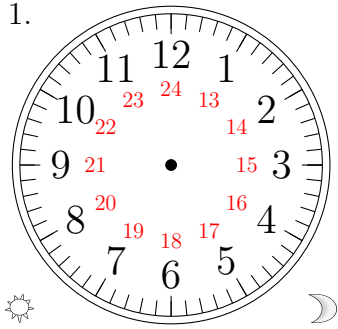


02:00:00

Place d'Aiguilles sur une Horloge Analogique (G)

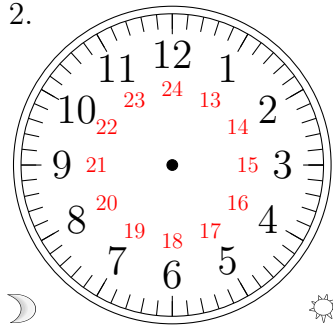
Placer les aiguilles de l'horloge pour qu'elles montrent le temps indiqué.

1.



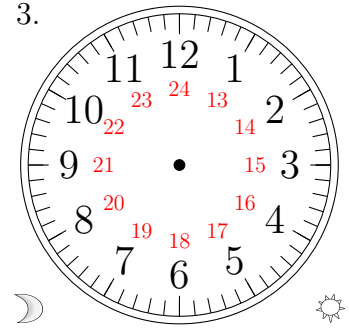
14:00:30

2.



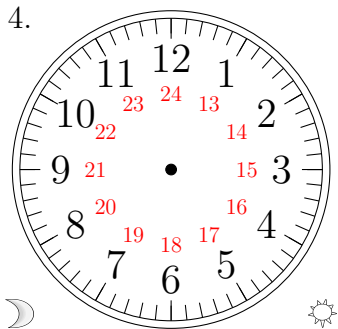
03:30:00

3.



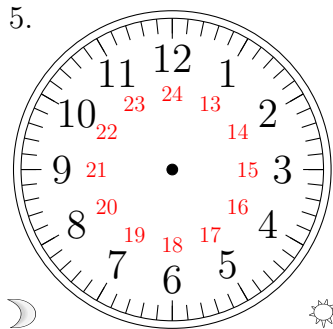
08:00:30

4.



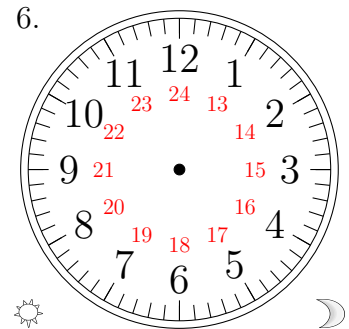
07:30:00

5.



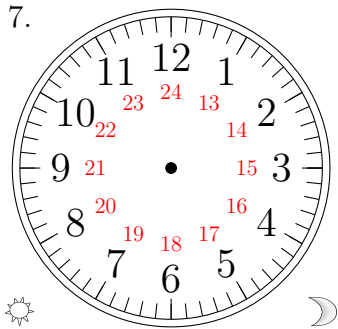
01:00:30

6.



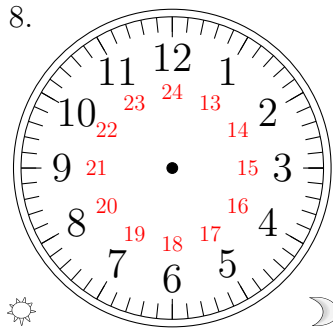
15:30:00

7.



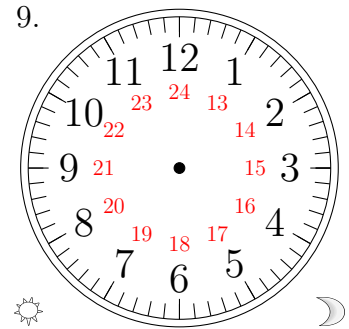
16:00:30

8.



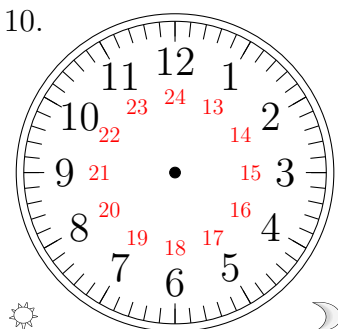
12:00:30

9.



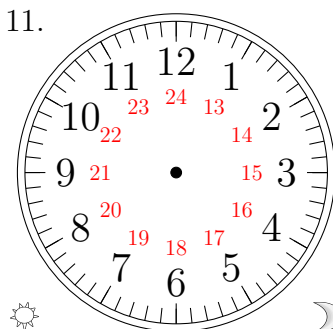
20:30:30

10.



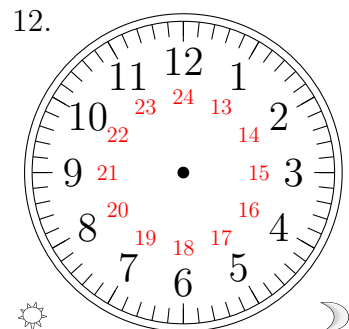
18:30:00

11.



22:30:00

12.

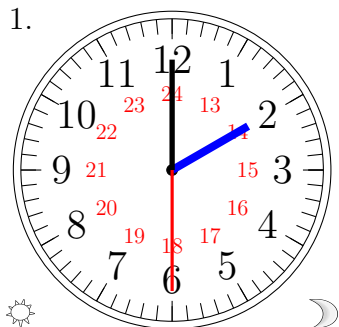


17:00:00

Place d'Aiguilles sur une Horloge Analogique (G) Solutions

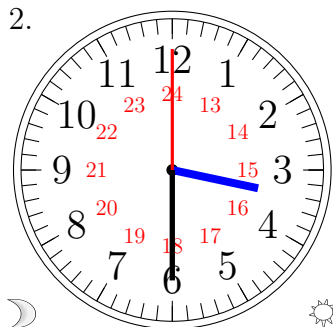
Placer les aiguilles de l'horloge pour qu'elles montrent le temps indiqué.

1.



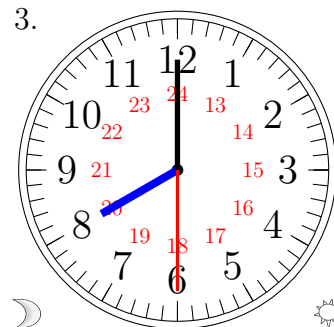
14:00:30

2.



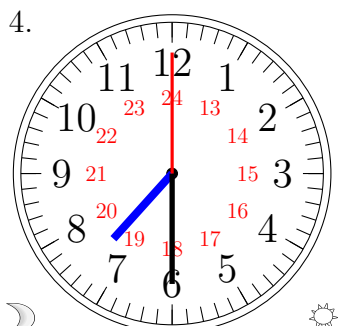
03:30:00

3.



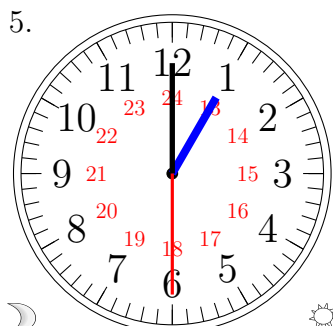
08:00:30

4.



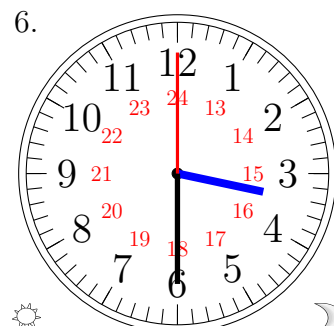
07:30:00

5.



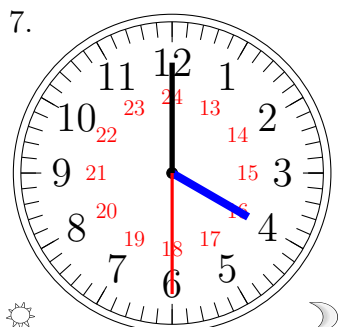
01:00:30

6.



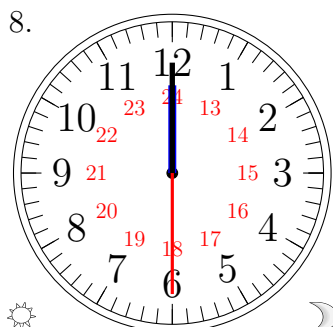
15:30:00

7.



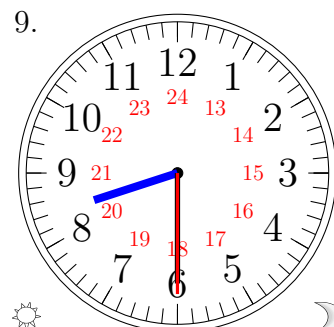
16:00:30

8.



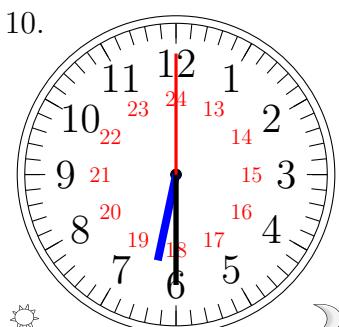
12:00:30

9.



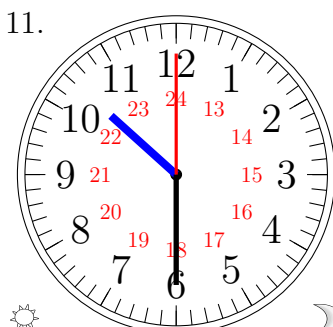
20:30:30

10.



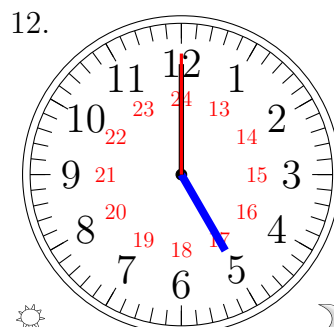
18:30:00

11.



22:30:00

12.

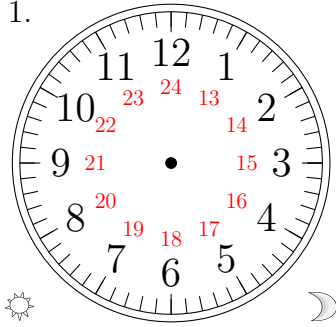


17:00:00

Place d'Aiguilles sur une Horloge Analogique (H)

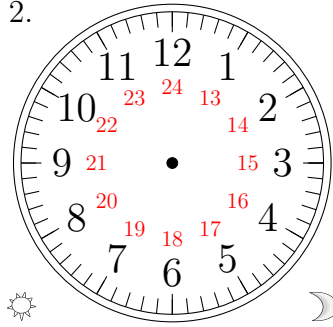
Placer les aiguilles de l'horloge pour qu'elles montrent le temps indiqué.

1.



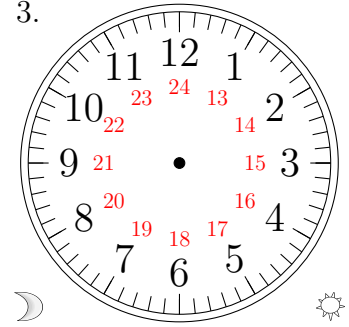
23:00:30

2.



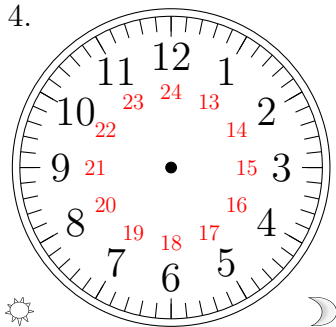
20:30:30

3.



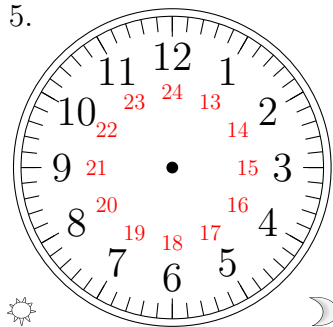
08:00:30

4.



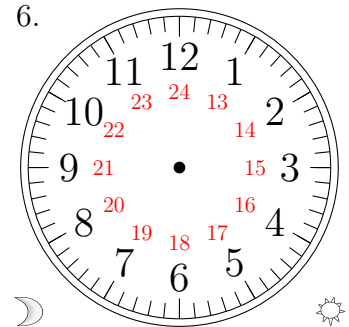
22:30:00

5.



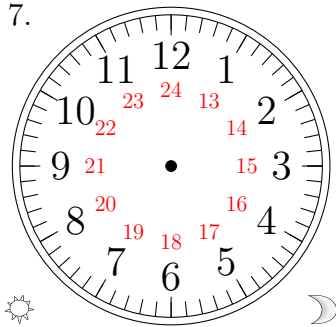
15:00:00

6.



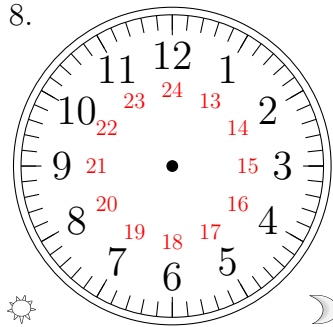
06:30:00

7.



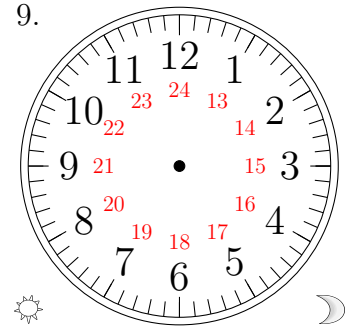
18:30:30

8.



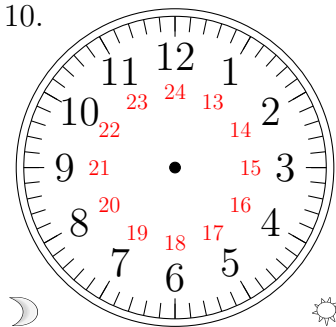
13:30:30

9.



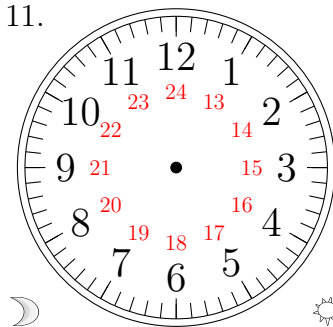
17:30:00

10.



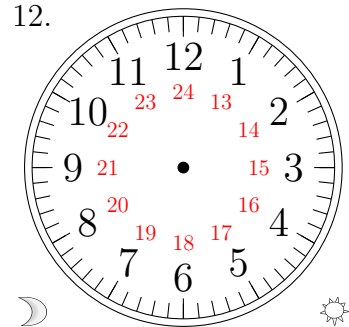
01:00:00

11.



04:00:00

12.

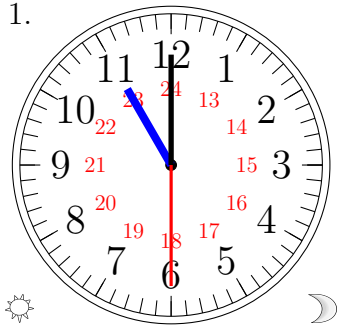


10:00:30

Place d'Aiguilles sur une Horloge Analogique (H) Solutions

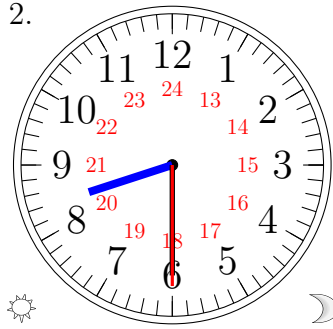
Placer les aiguilles de l'horloge pour qu'elles montrent le temps indiqué.

1.



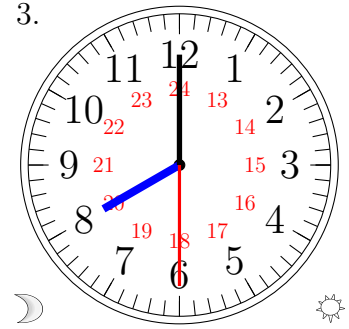
23:00:30

2.



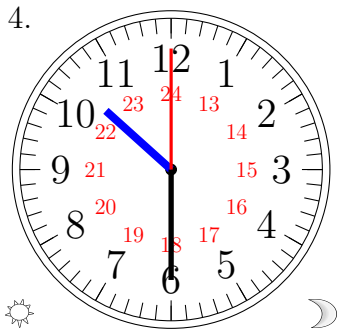
20:30:30

3.



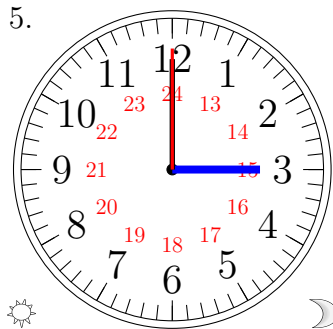
08:00:30

4.



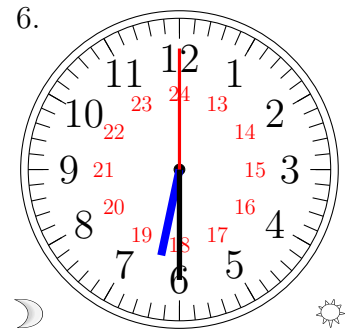
22:30:00

5.



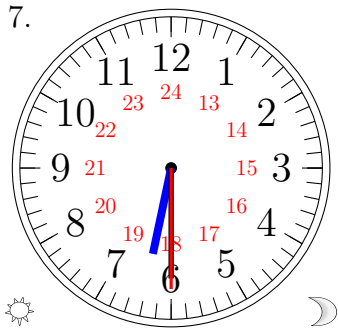
15:00:00

6.



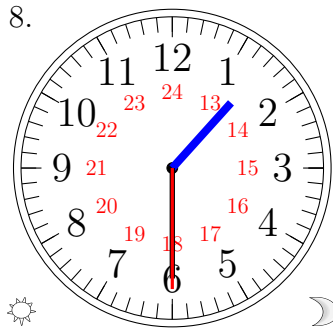
06:30:00

7.



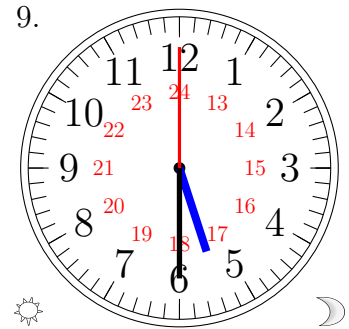
18:30:30

8.



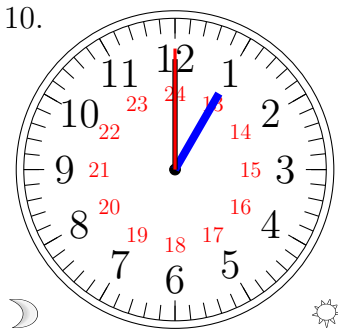
13:30:30

9.



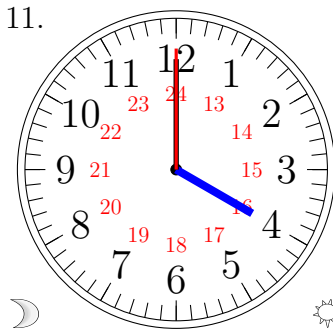
17:30:00

10.



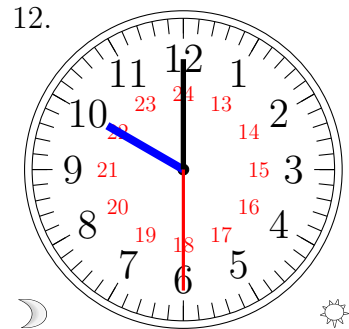
01:00:00

11.



04:00:00

12.

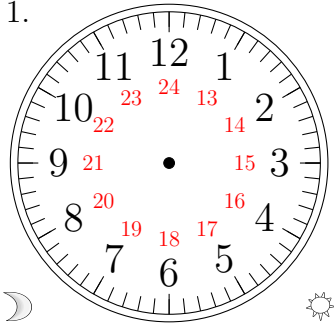


10:00:30

Place d'Aiguilles sur une Horloge Analogique (I)

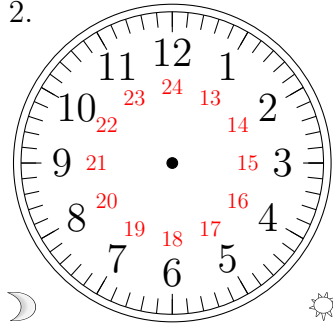
Placer les aiguilles de l'horloge pour qu'elles montrent le temps indiqué.

1.



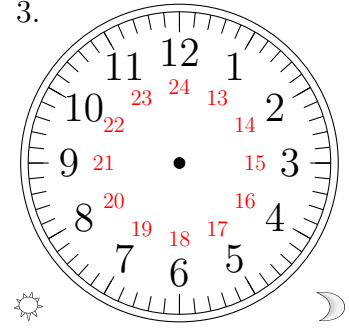
10:30:30

2.



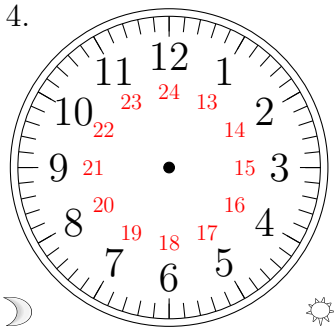
01:30:00

3.



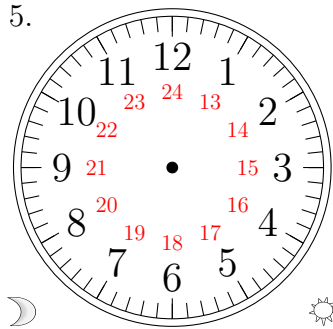
23:00:30

4.



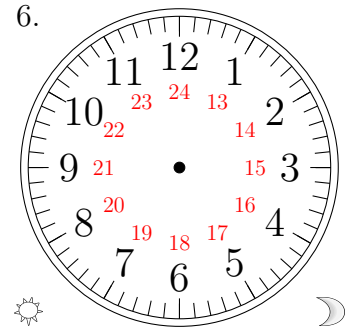
06:00:00

5.



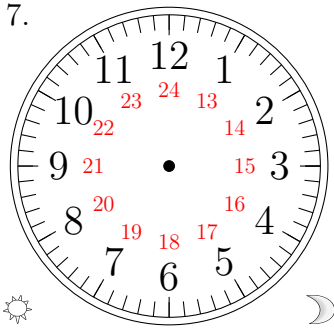
02:00:30

6.



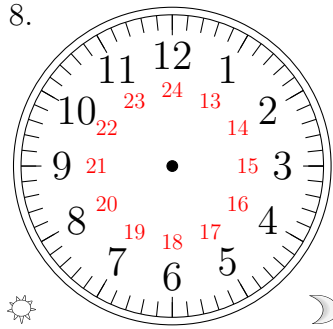
20:30:00

7.



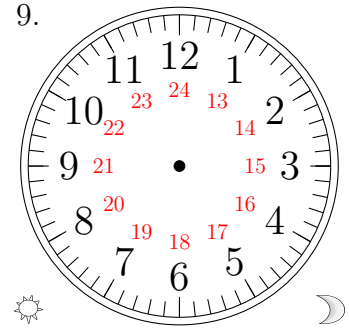
18:30:30

8.



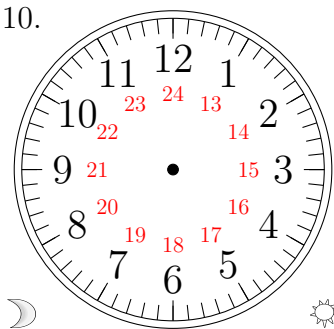
12:30:00

9.



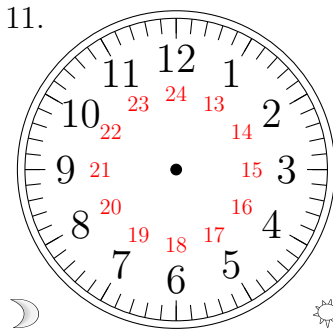
13:00:30

10.



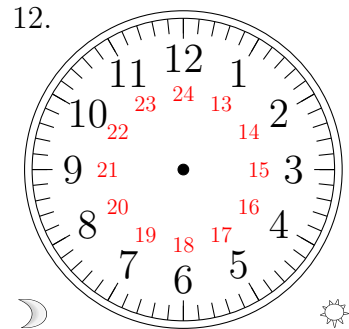
03:00:00

11.



05:00:30

12.

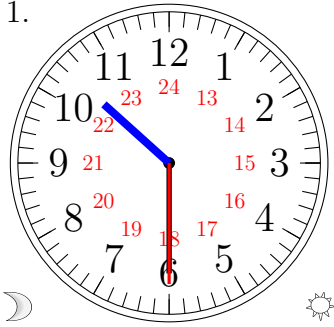


00:30:00

Place d'Aiguilles sur une Horloge Analogique (I) Solutions

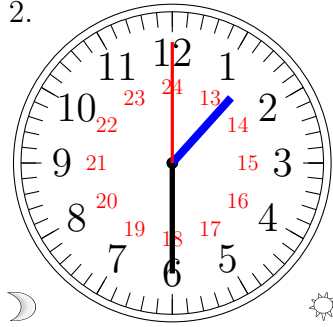
Placer les aiguilles de l'horloge pour qu'elles montrent le temps indiqué.

1.



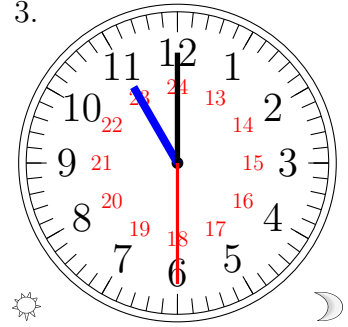
10:30:30

2.



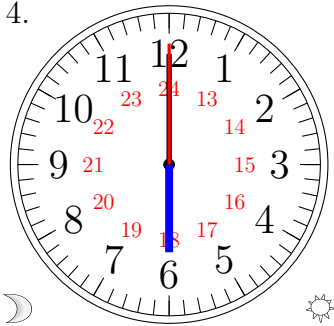
01:30:00

3.



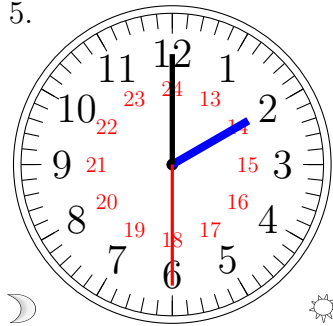
23:00:30

4.



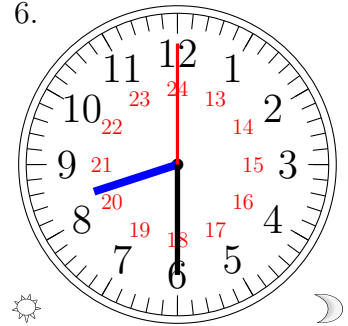
06:00:00

5.



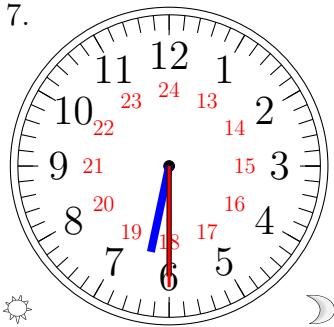
02:00:30

6.



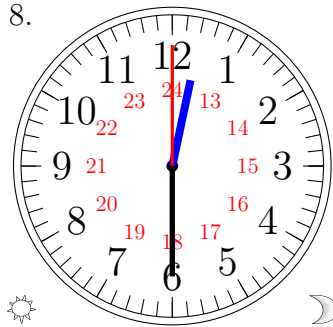
20:30:00

7.



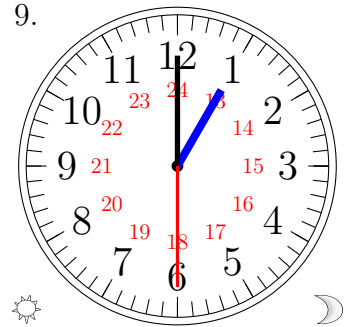
18:30:30

8.



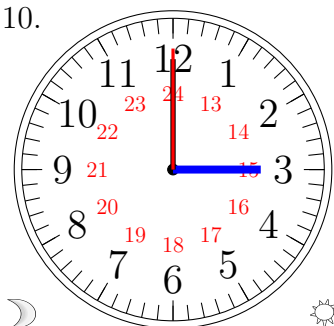
12:30:00

9.



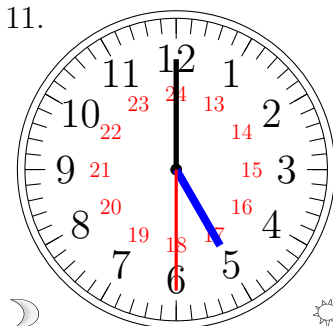
13:00:30

10.



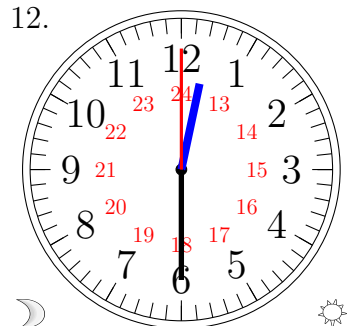
03:00:00

11.



05:00:30

12.

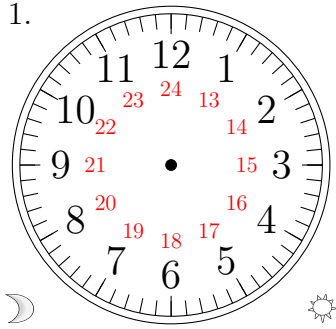


00:30:00

Place d'Aiguilles sur une Horloge Analogique (J)

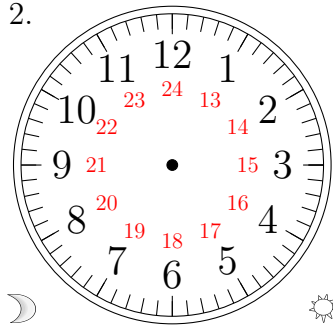
Placer les aiguilles de l'horloge pour qu'elles montrent le temps indiqué.

1.



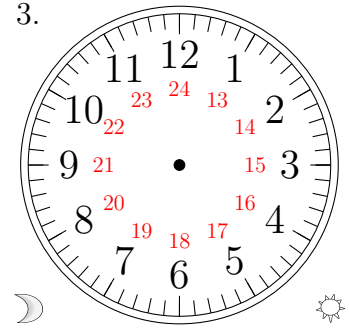
10:30:00

2.



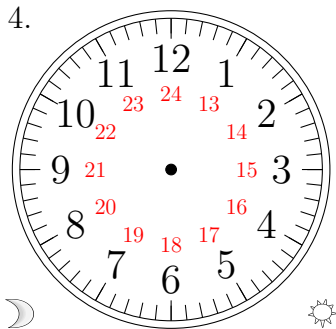
03:30:00

3.



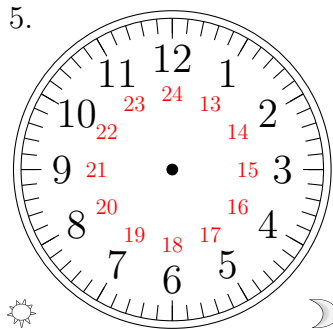
11:00:00

4.



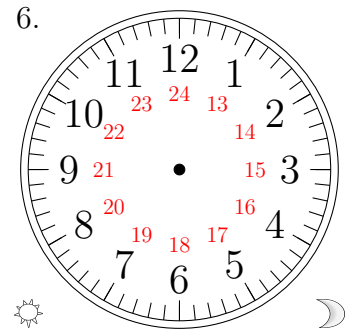
04:00:30

5.



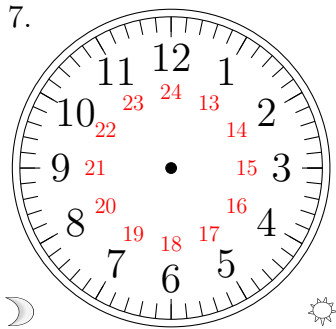
13:00:30

6.



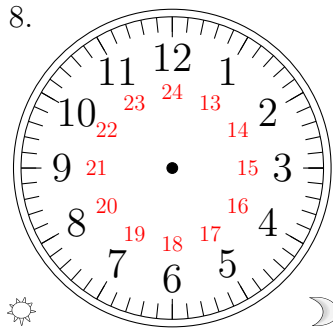
19:30:30

7.



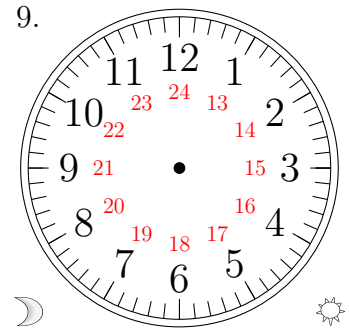
06:00:30

8.



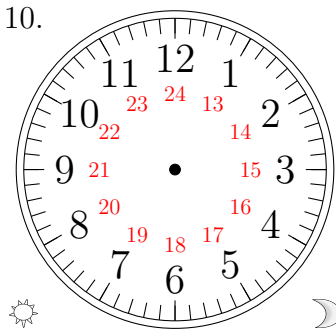
17:30:30

9.



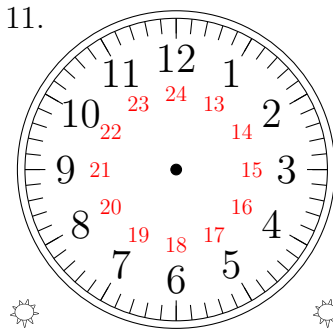
02:00:00

10.



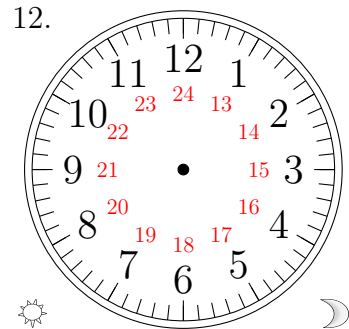
20:30:00

11.



12:00:00

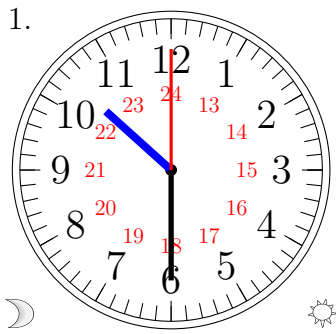
12.



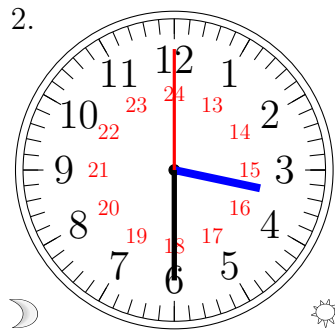
16:30:30

Place d'Aiguilles sur une Horloge Analogique (J) Solutions

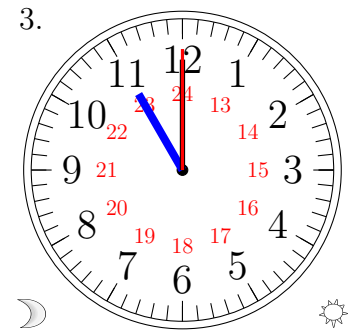
Placer les aiguilles de l'horloge pour qu'elles montrent le temps indiqué.



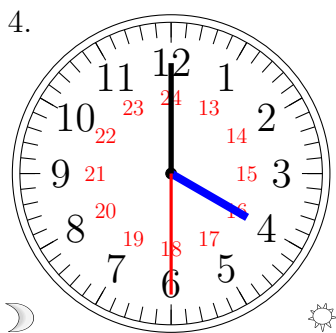
10:30:00



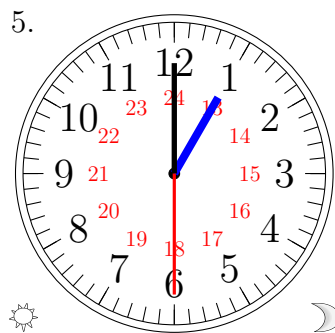
03:30:00



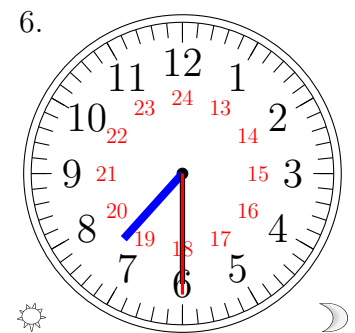
11:00:00



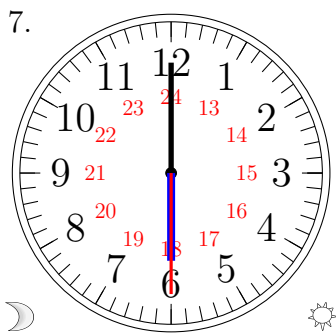
04:00:30



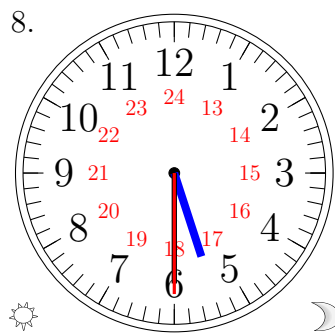
13:00:30



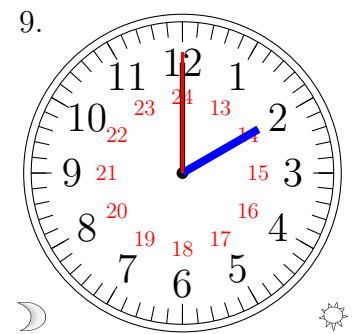
19:30:30



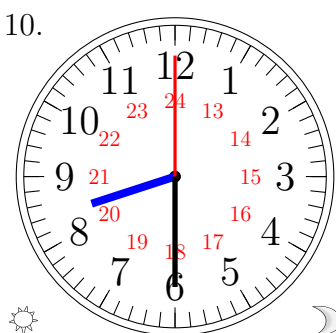
06:00:30



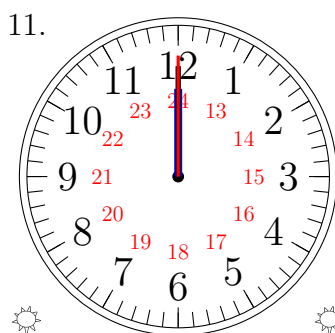
17:30:30



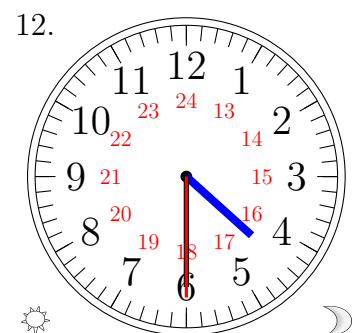
02:00:00



20:30:00



12:00:00



16:30:30