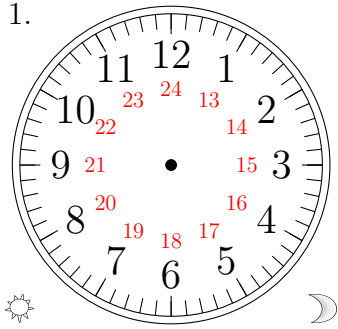


Place d'Aiguilles sur une Horloge Analogique (G)

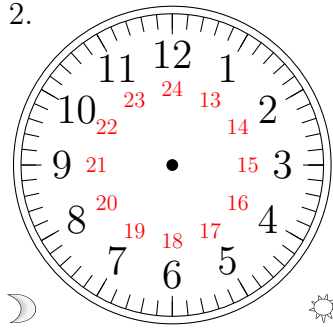
Placer les aiguilles de l'horloge pour qu'elles montrent le temps indiqué.

1.



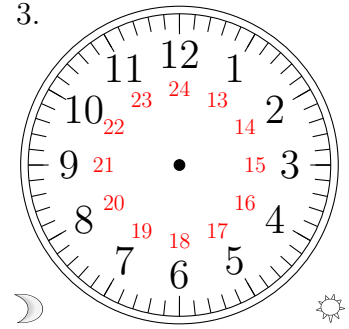
14:00:30

2.



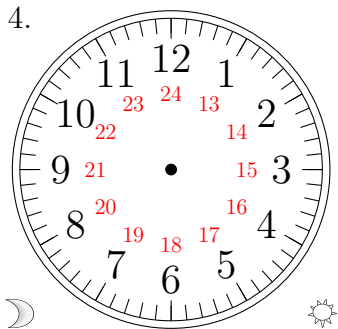
03:30:00

3.



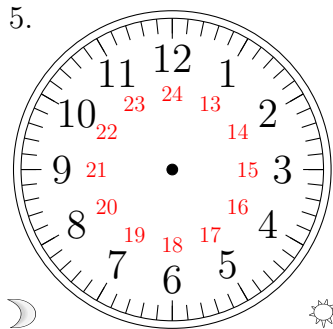
08:00:30

4.



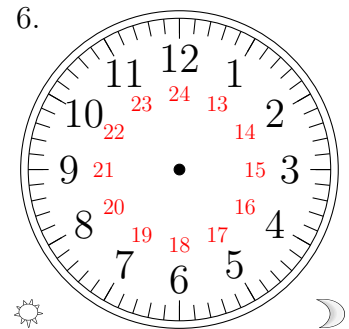
07:30:00

5.



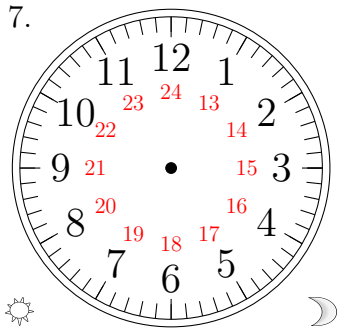
01:00:30

6.



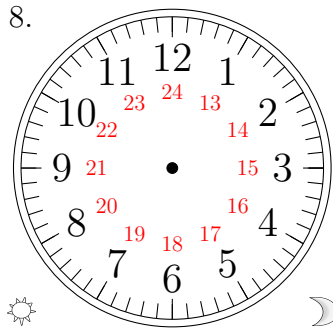
15:30:00

7.



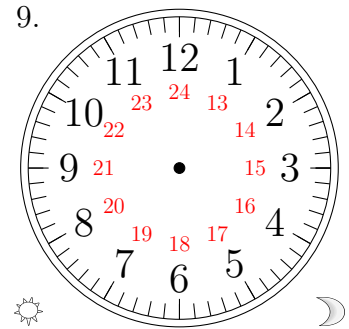
16:00:30

8.



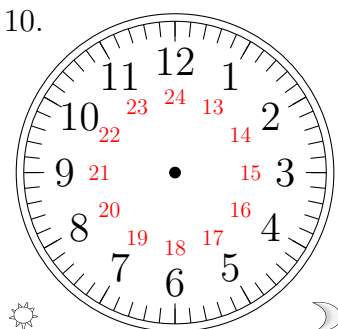
12:00:30

9.



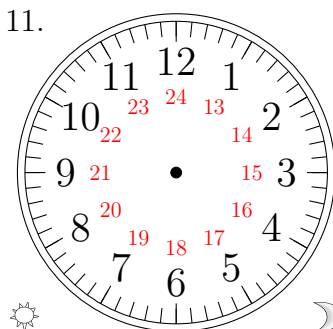
20:30:30

10.



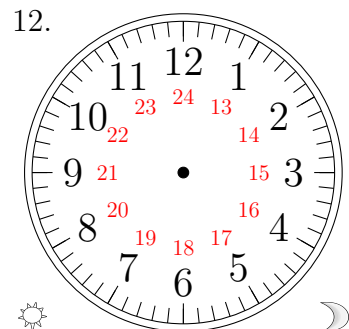
18:30:00

11.



22:30:00

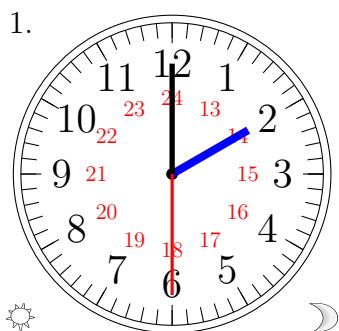
12.



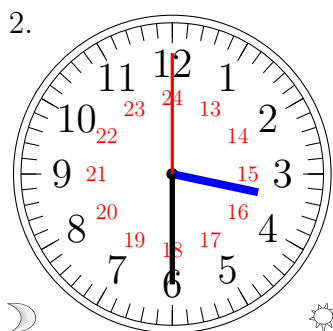
17:00:00

Place d'Aiguilles sur une Horloge Analogique (G) Solutions

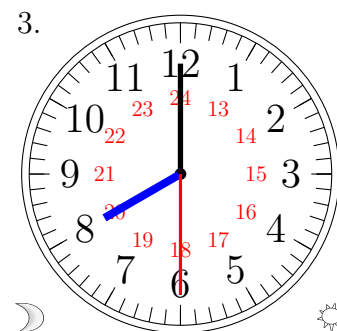
Placer les aiguilles de l'horloge pour qu'elles montrent le temps indiqué.



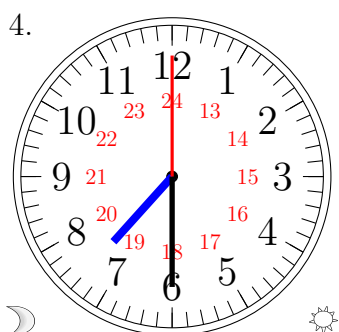
14:00:30



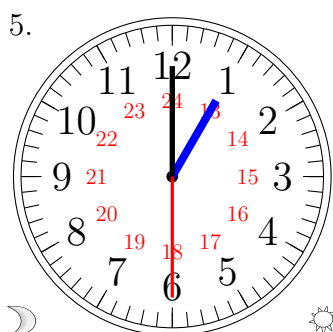
03:30:00



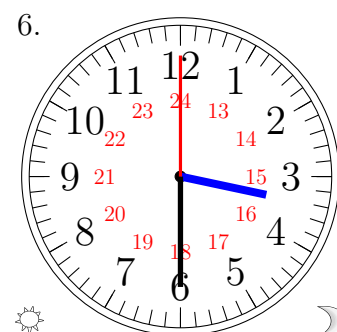
08:00:30



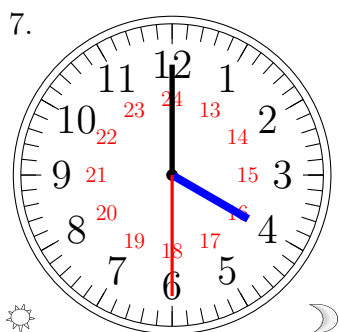
07:30:00



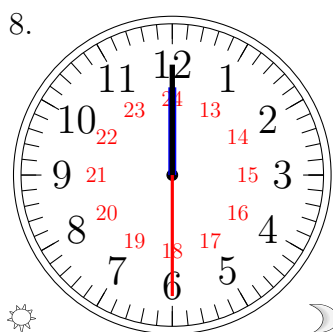
01:00:30



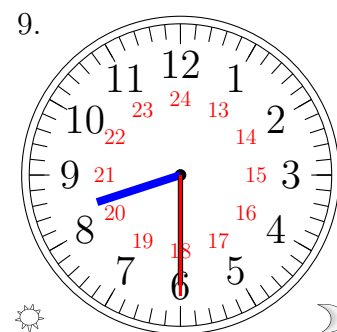
15:30:00



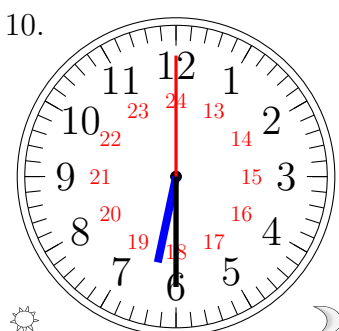
16:00:30



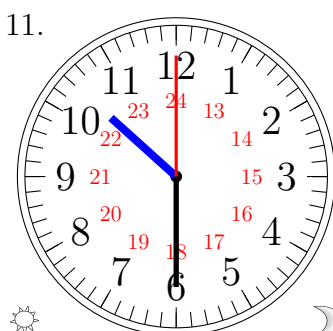
12:00:30



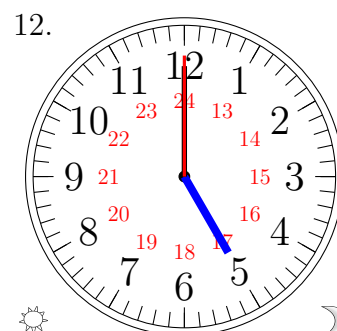
20:30:30



18:30:00



22:30:00



17:00:00