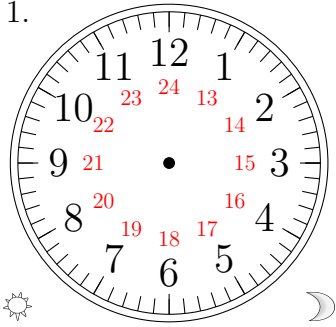


Place d'Aiguilles sur une Horloge Analogique (E)

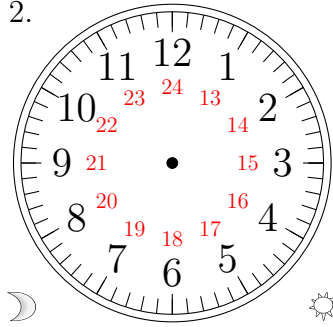
Placer les aiguilles de l'horloge pour qu'elles montrent le temps indiqué.

1.



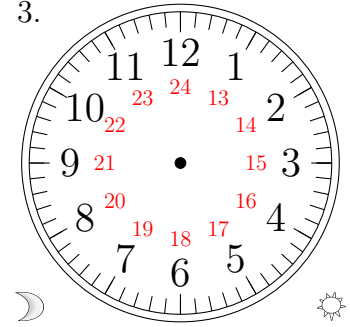
16:00:30

2.



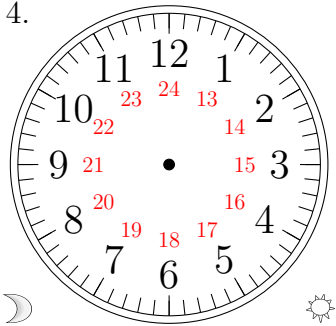
05:30:00

3.



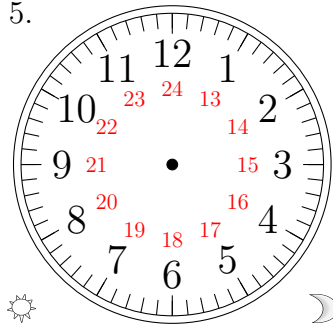
10:30:30

4.



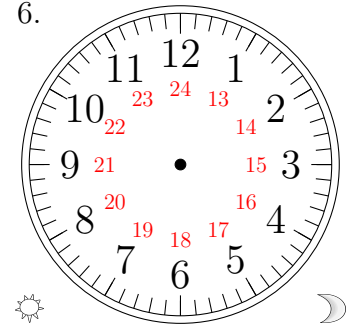
06:30:00

5.



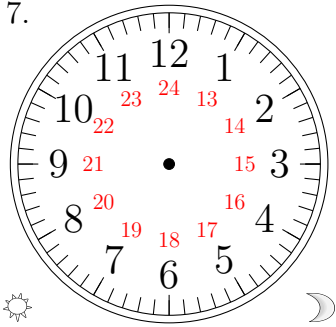
13:00:30

6.



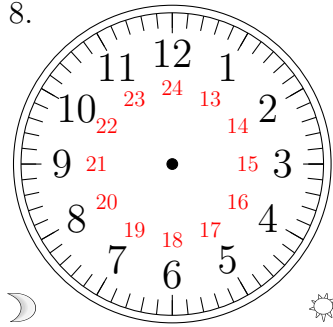
21:00:00

7.



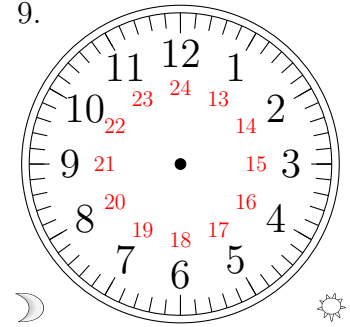
18:00:30

8.



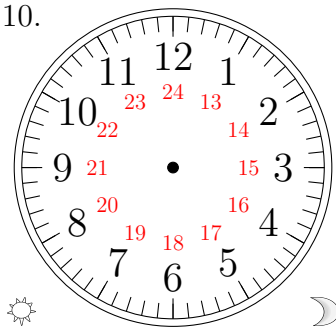
07:00:00

9.



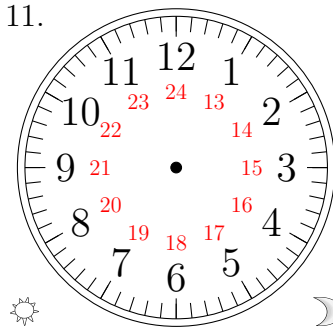
08:30:00

10.



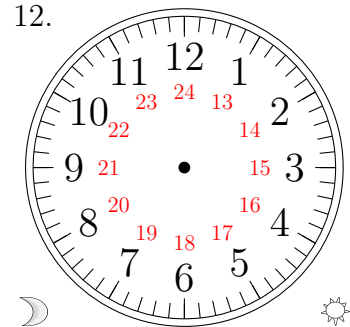
17:30:00

11.



22:30:30

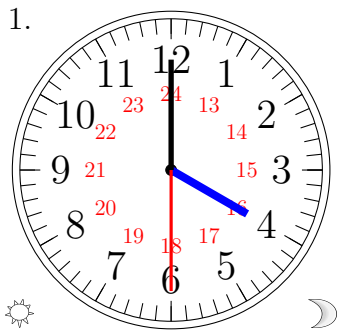
12.



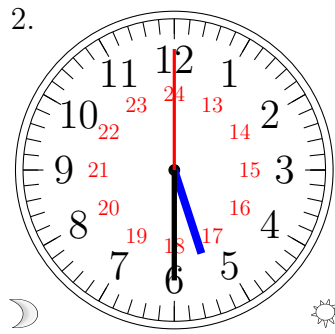
02:00:30

Place d'Aiguilles sur une Horloge Analogique (E) Solutions

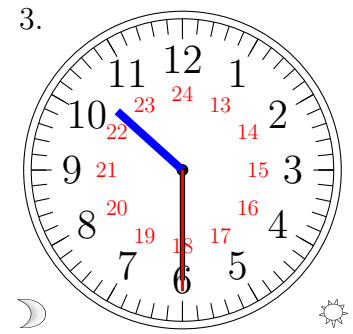
Placer les aiguilles de l'horloge pour qu'elles montrent le temps indiqué.



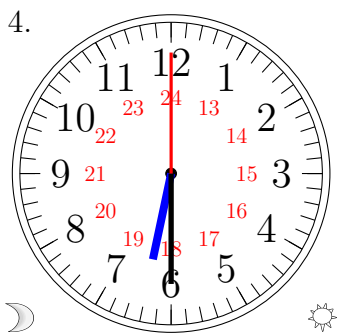
16:00:30



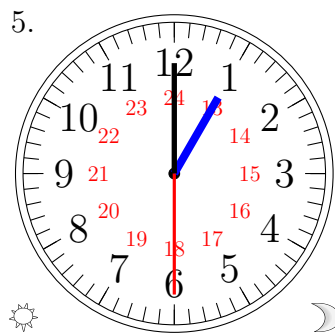
05:30:00



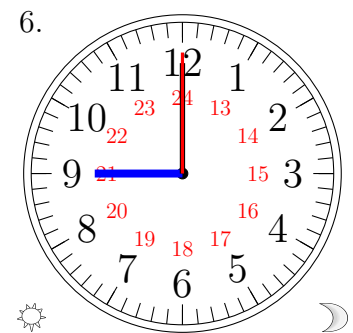
10:30:30



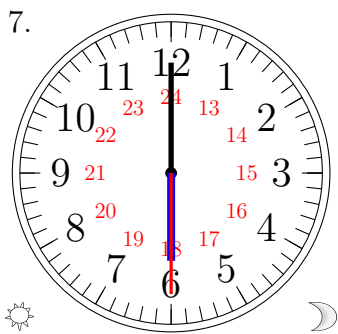
06:30:00



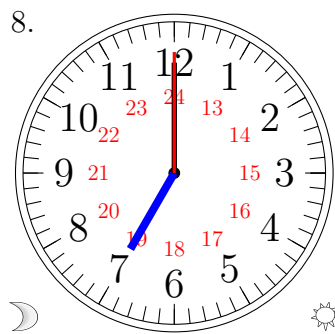
13:00:30



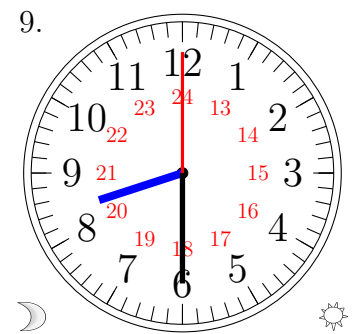
21:00:00



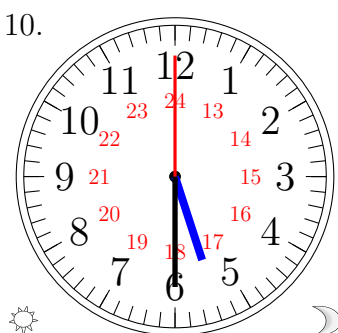
18:00:30



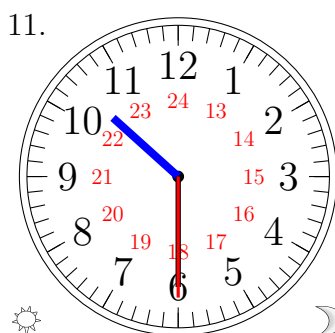
07:00:00



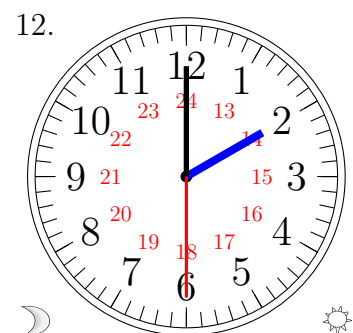
08:30:00



17:30:00



22:30:30



02:00:30