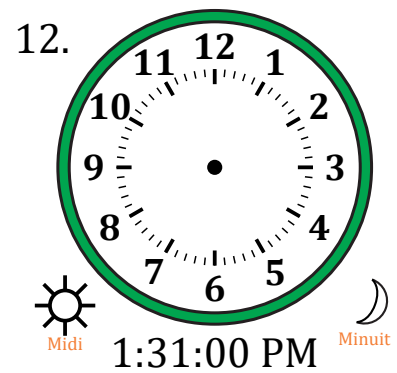
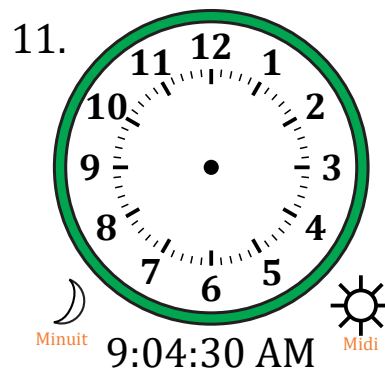
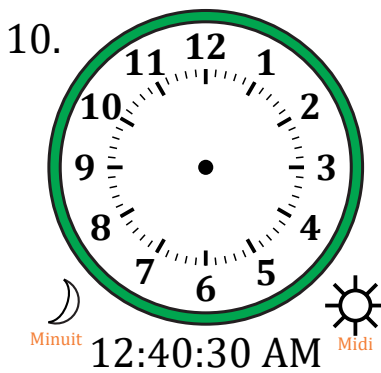
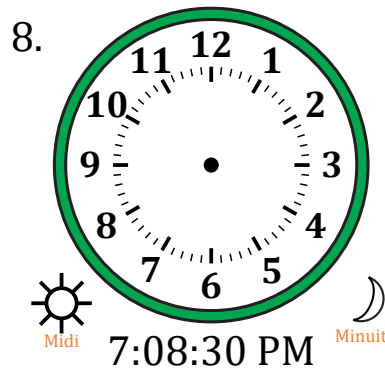
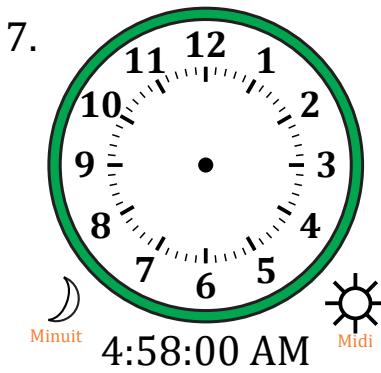
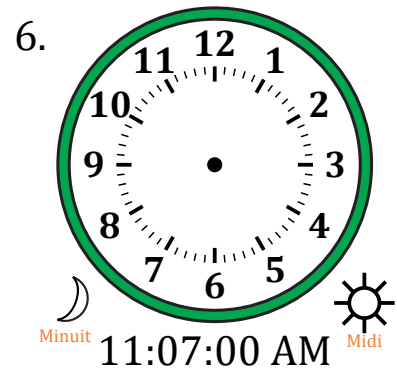
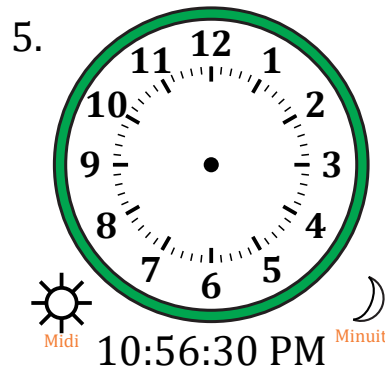
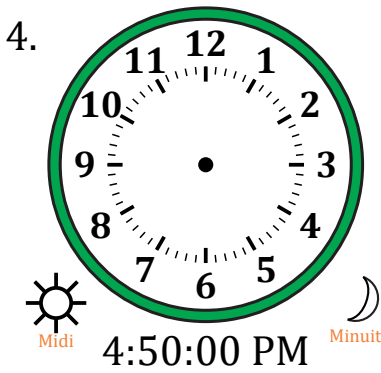
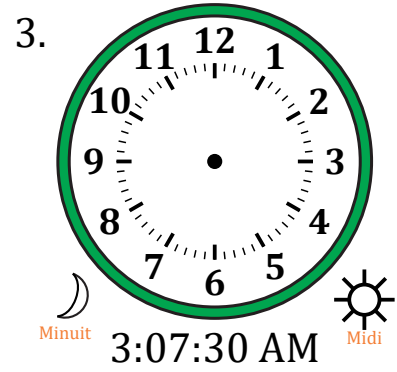
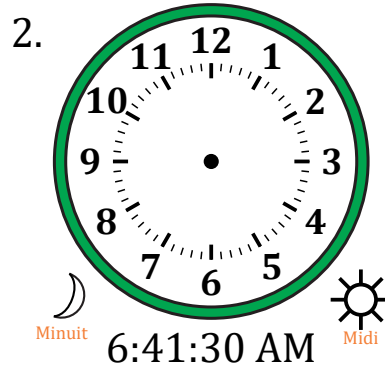
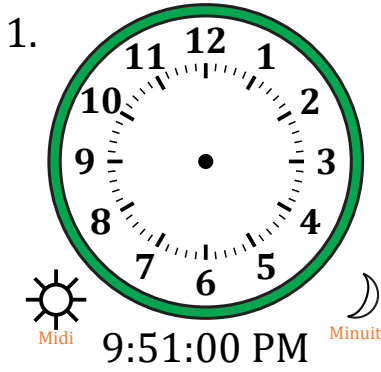


Place d'Aiguilles sur Une Horloge Analogique (I)

Nom: _____

Date: _____

Placer les aiguilles de l'horloge pour qu'elles montrent le temps indiqué.

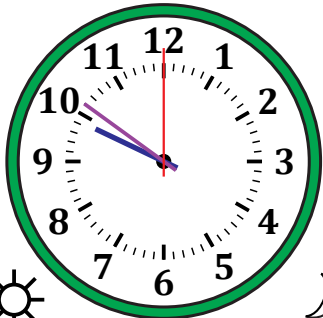


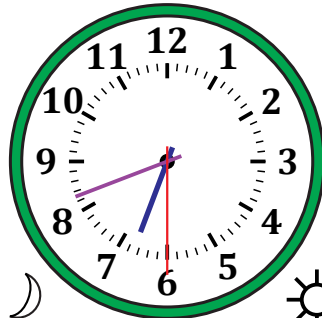
Place d'Aiguilles sur Une Horloge Analogique (I) Solutions

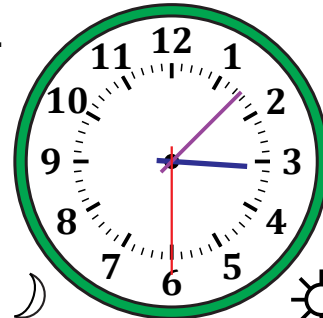
Nom: _____

Date: _____

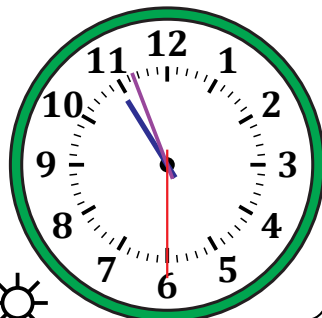
Placer les aiguilles de l'horloge pour qu'elles montrent le temps indiqué.

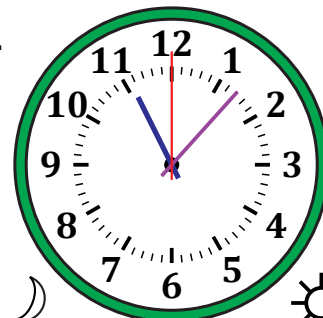
1. 
Midi Minuit
9:51:00 PM

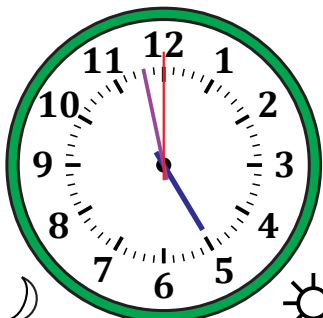
2. 
Minuit Midi
6:41:30 AM

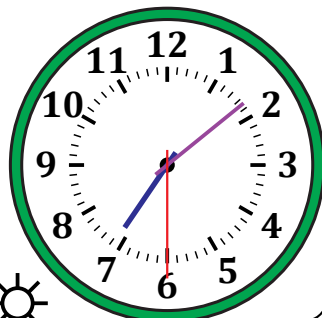
3. 
Minuit Midi
3:07:30 AM

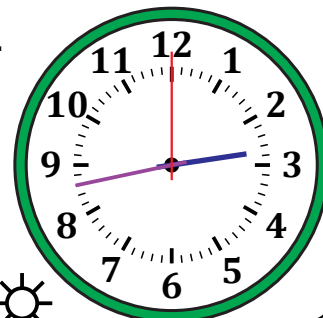
4. 
Midi Minuit
4:50:00 PM

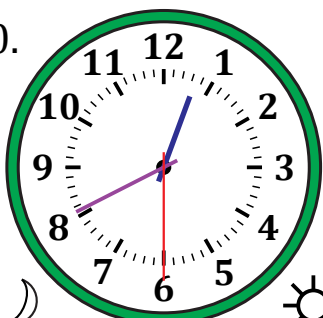
5. 
Midi Minuit
10:56:30 PM

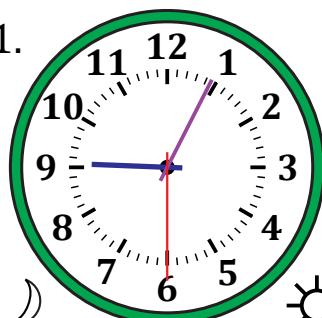
6. 
Minuit Midi
11:07:00 AM

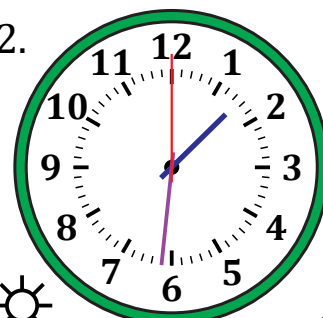
7. 
Minuit Midi
4:58:00 AM

8. 
Midi Minuit
7:08:30 PM

9. 
Midi Minuit
2:43:00 PM

10. 
Minuit Midi
12:40:30 AM

11. 
Minuit Midi
9:04:30 AM

12. 
Midi Minuit
1:31:00 PM