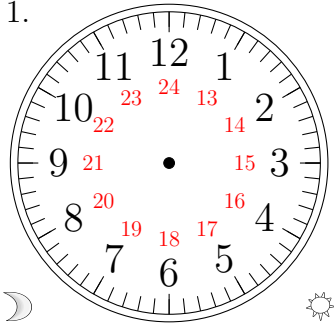


# Place d'Aiguilles sur une Horloge Analogique (E)

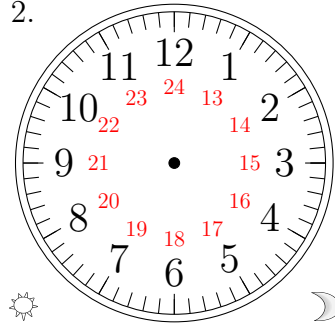
Placer les aiguilles de l'horloge pour qu'elles montrent le temps indiqué.

1.



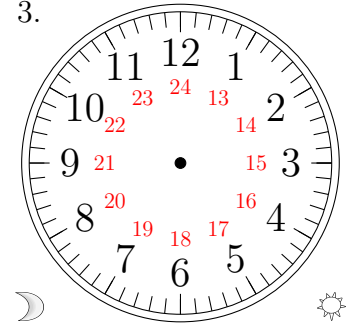
01:49

2.



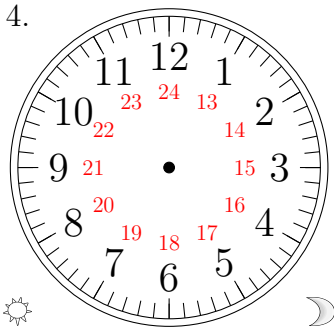
18:55

3.



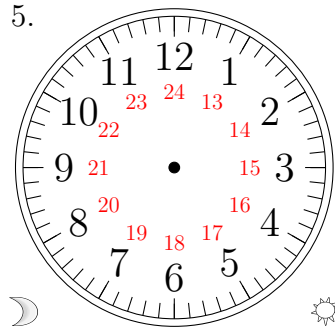
06:13

4.



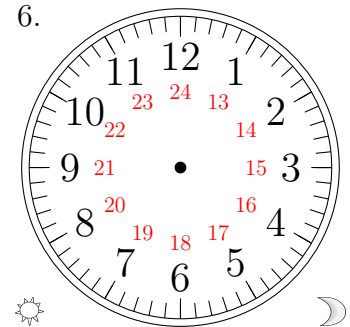
12:07

5.



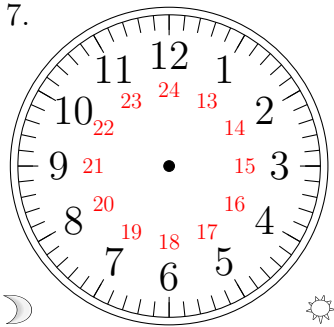
00:15

6.



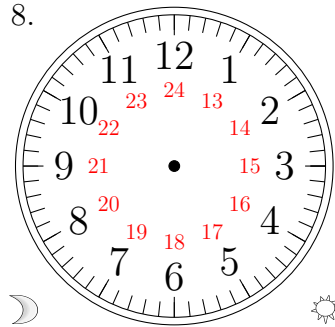
21:12

7.



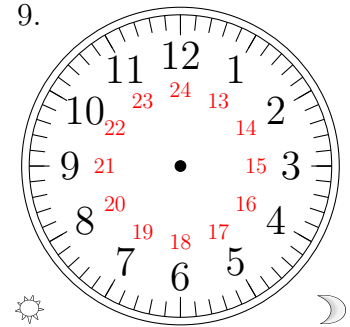
03:31

8.



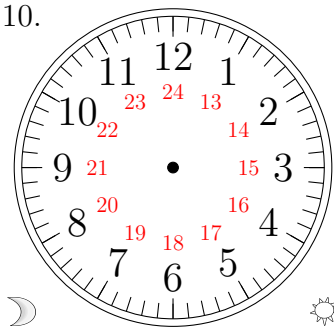
02:00

9.



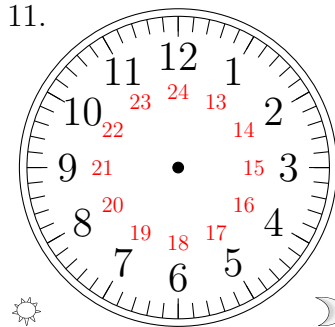
15:42

10.



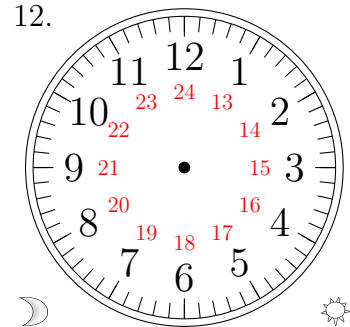
07:51

11.



17:41

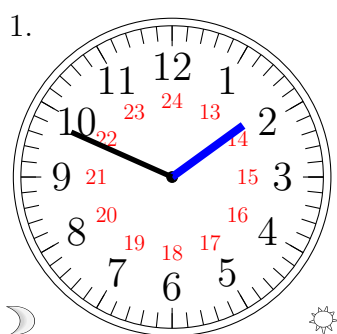
12.



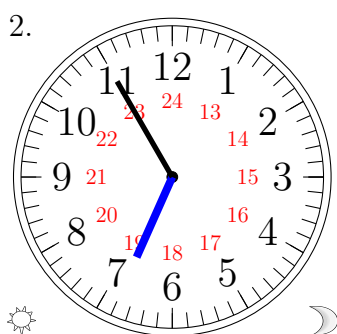
04:20

# Place d'Aiguilles sur une Horloge Analogique (E) Solutions

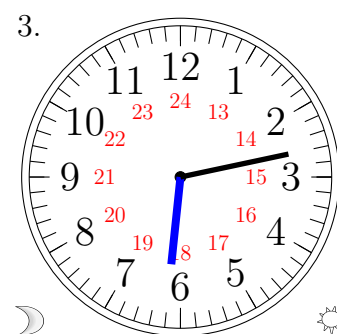
Placer les aiguilles de l'horloge pour qu'elles montrent le temps indiqué.



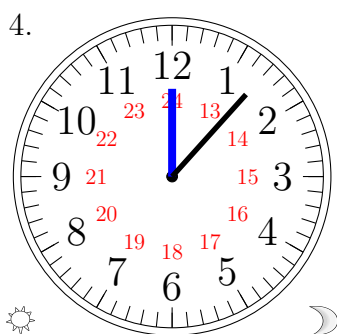
01:49



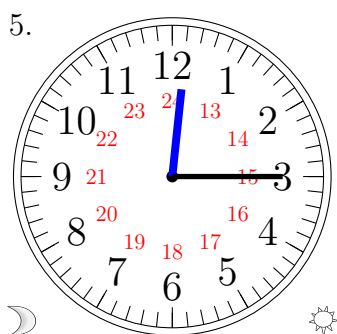
10:35



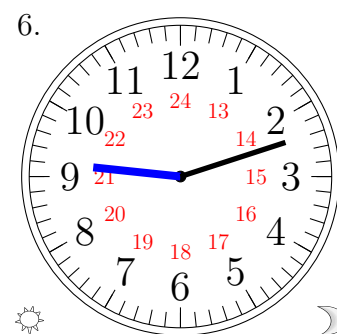
06:15



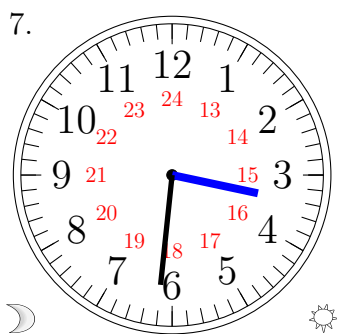
11:05



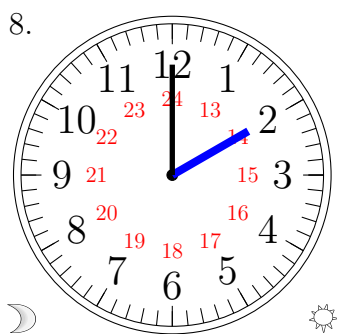
12:15



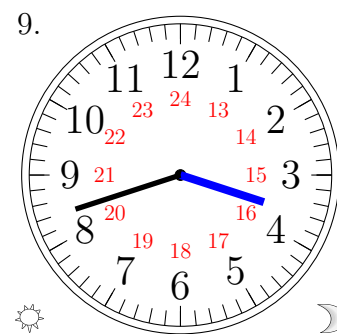
09:10



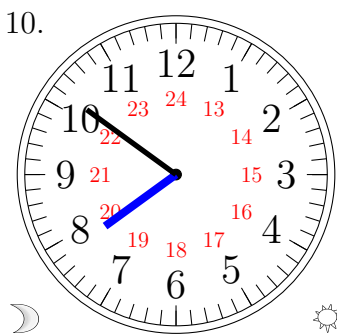
08:30



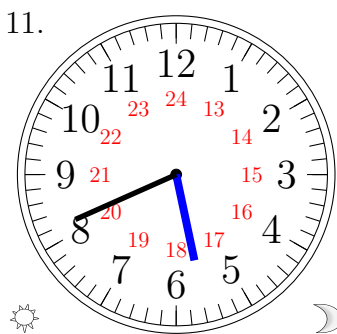
12:10



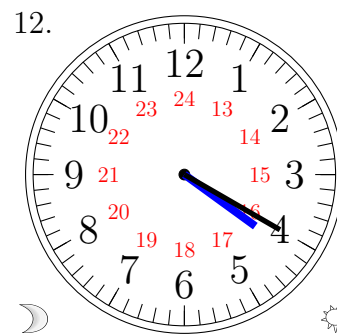
03:40



10:40



07:30



04:20