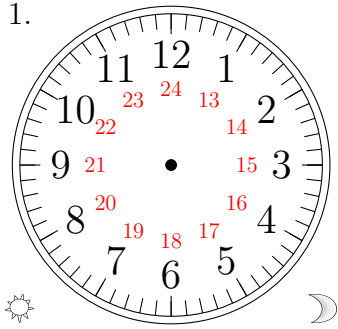


Place d'Aiguilles sur une Horloge Analogique (A)

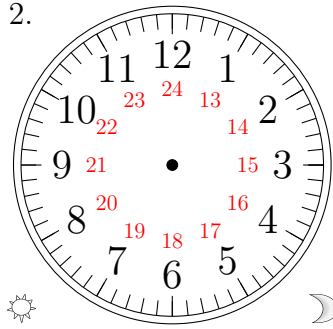
Placer les aiguilles de l'horloge pour qu'elles montrent le temps indiqué.

1.



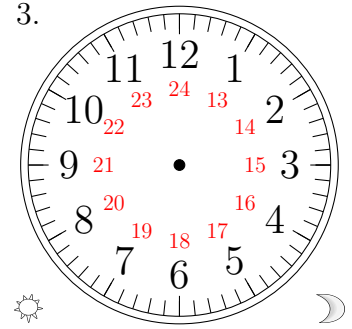
13:30

2.



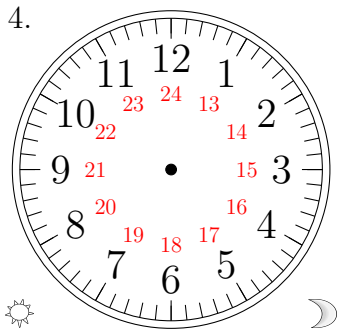
22:39

3.



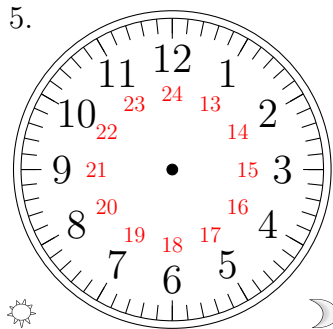
16:57

4.



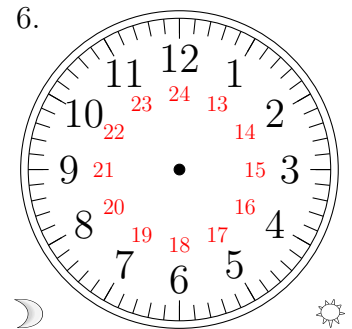
15:06

5.



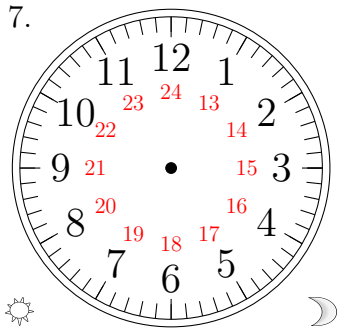
21:54

6.



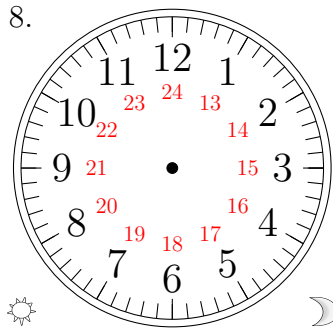
05:18

7.



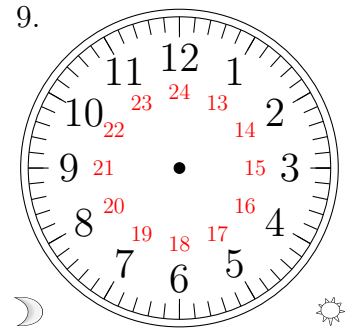
18:14

8.



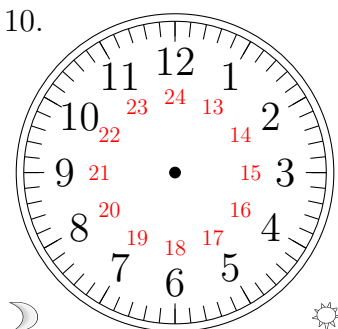
20:27

9.



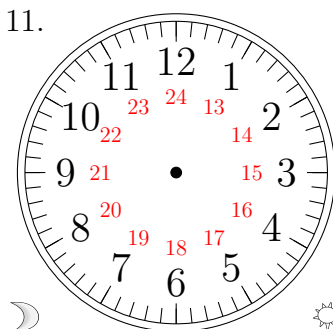
11:09

10.



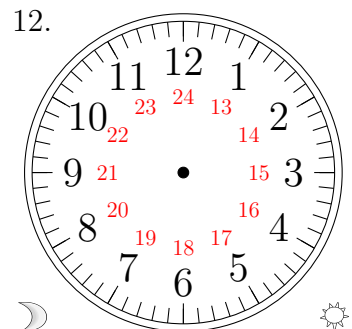
08:17

11.



04:22

12.

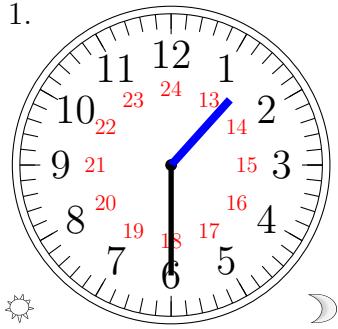


01:12

Place d'Aiguilles sur une Horloge Analogique (A) Solutions

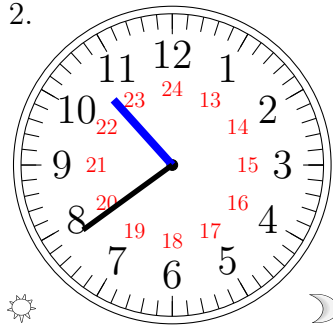
Placer les aiguilles de l'horloge pour qu'elles montrent le temps indiqué.

1.



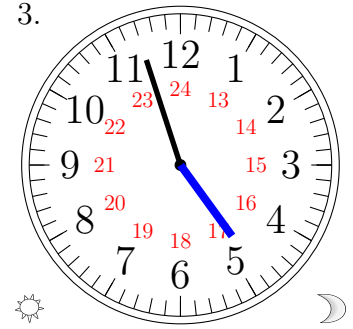
13:30

2.



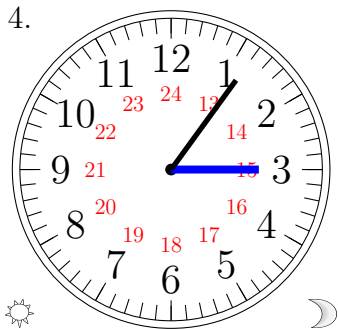
22:39

3.



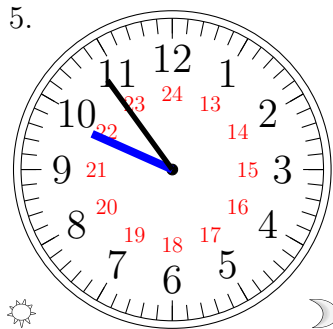
16:57

4.



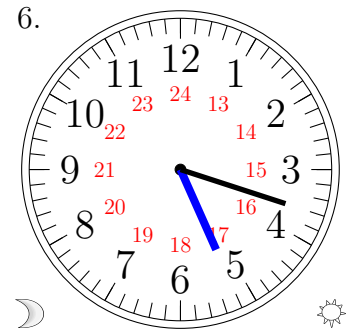
15:06

5.



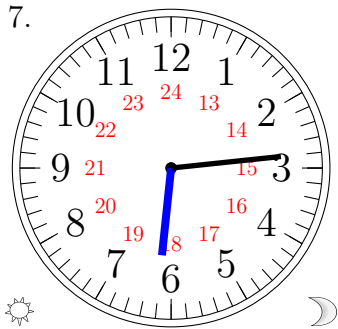
21:54

6.



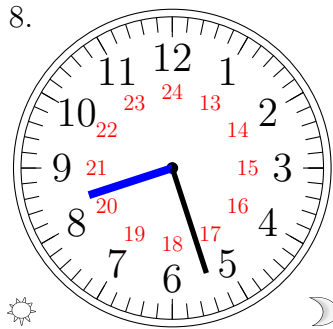
05:18

7.



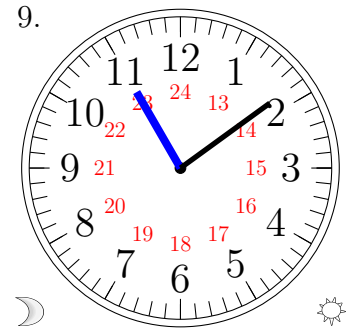
18:14

8.



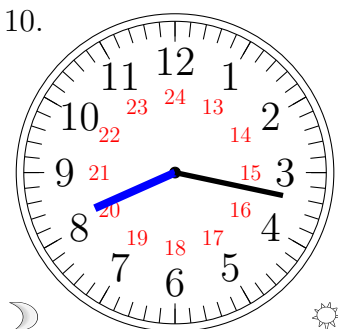
20:27

9.



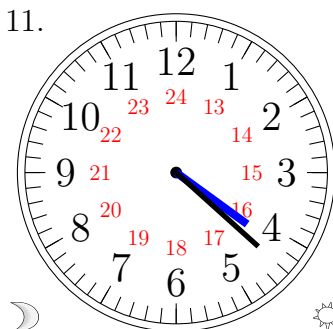
11:09

10.



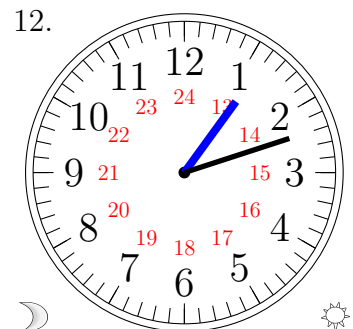
08:17

11.



04:22

12.



01:12