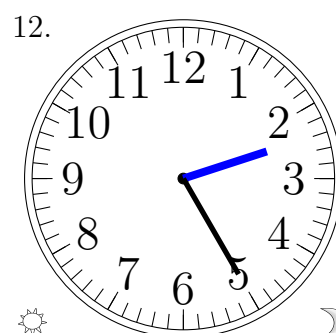
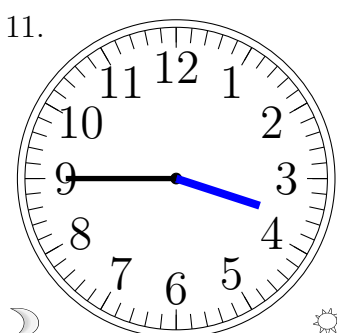
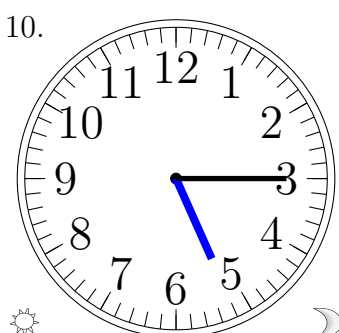
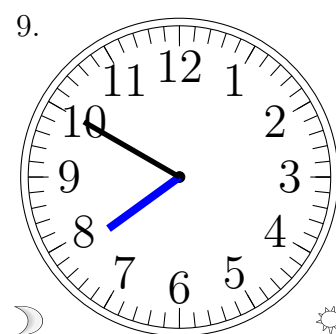
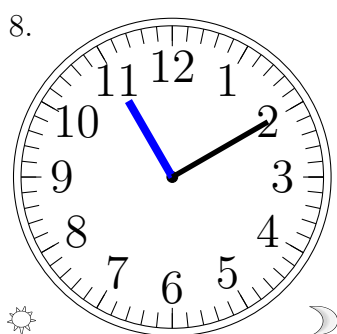
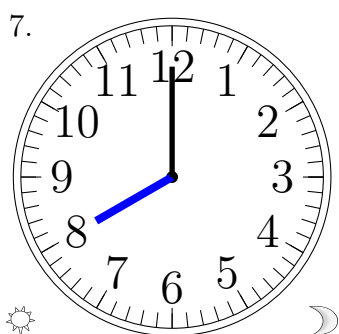
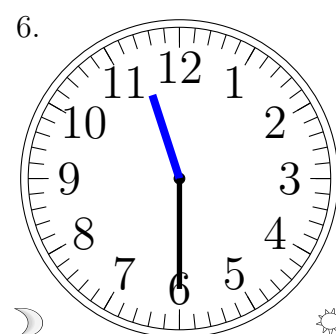
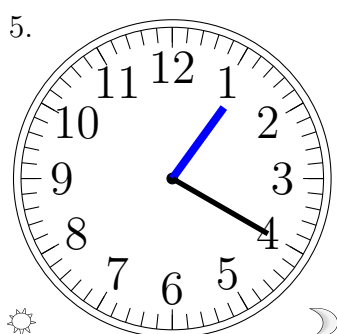
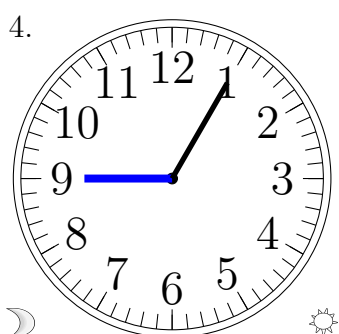
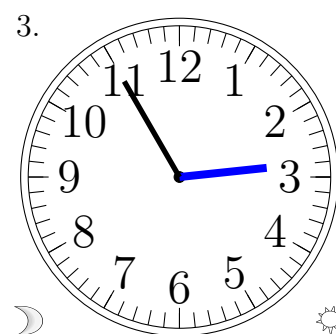
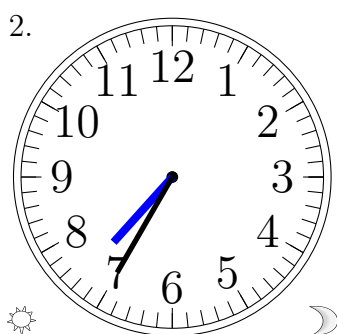
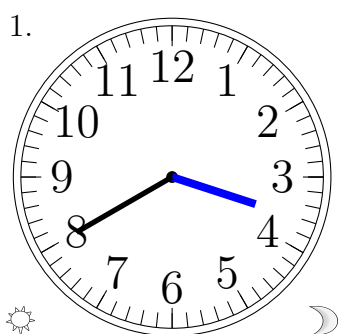


Lecture d'une Horloge Analogique (B)

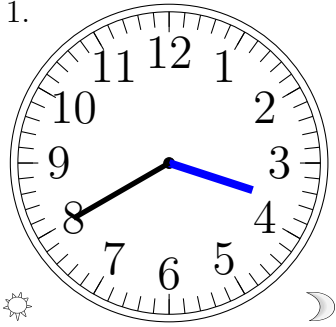
Lisez chaque heure et écrivez-la dans l'espace sous l'horloge.



Lecture d'une Horloge Analogique (B) Solutions

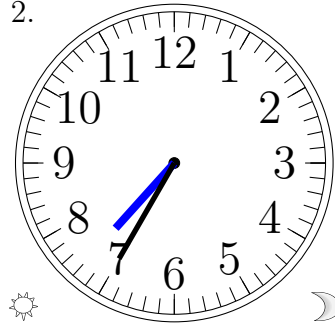
Lisez chaque heure et écrivez-la dans l'espace sous l'horloge.

1.



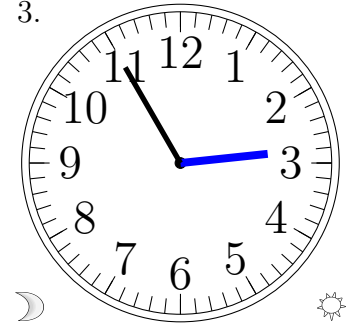
3:40 PM

2.



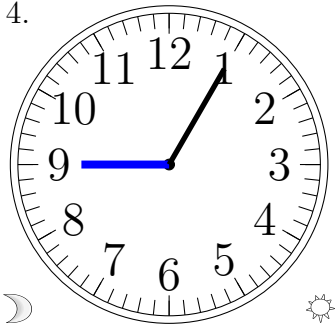
7:35 PM

3.



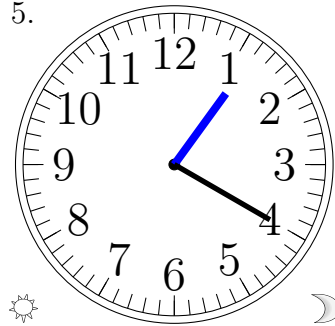
2:55 AM

4.



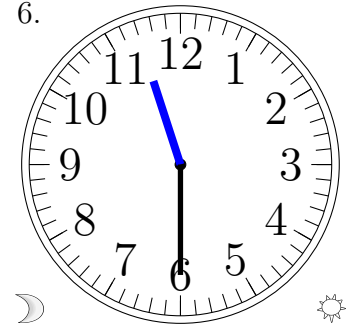
9:05 AM

5.



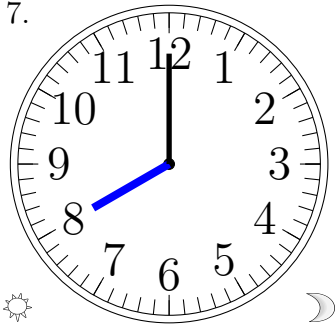
1:20 PM

6.



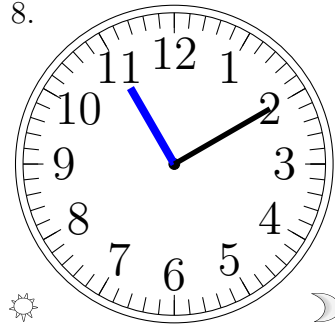
11:30 AM

7.



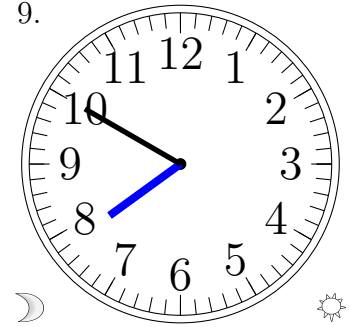
8:00 PM

8.



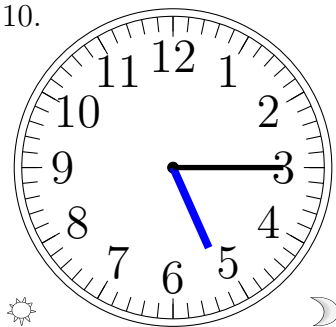
11:10 PM

9.



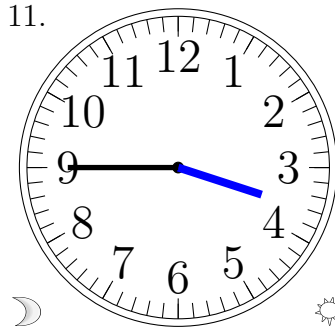
7:50 AM

10.



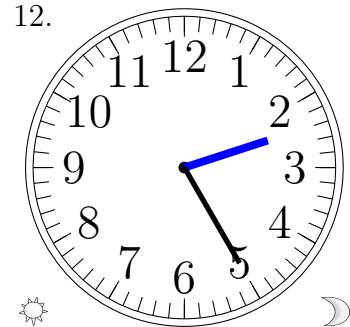
5:15 PM

11.



3:45 AM

12.



2:25 PM