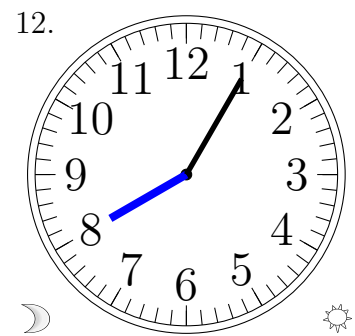
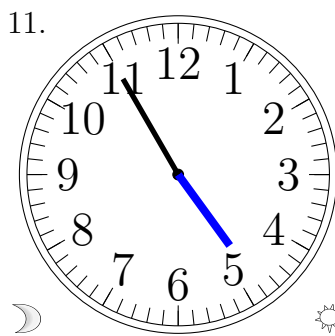
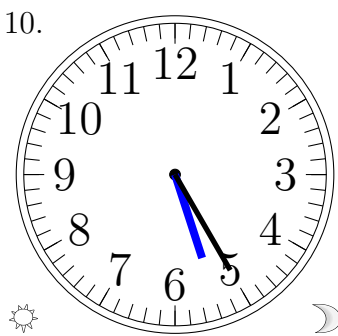
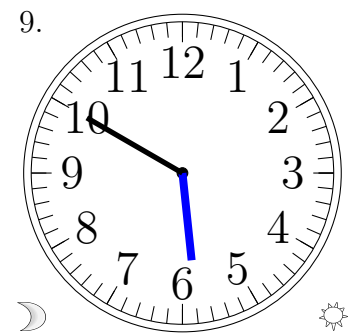
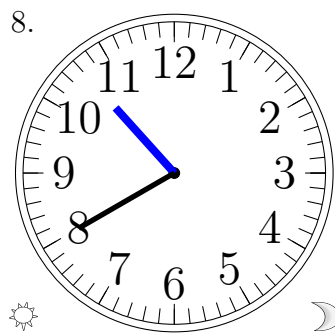
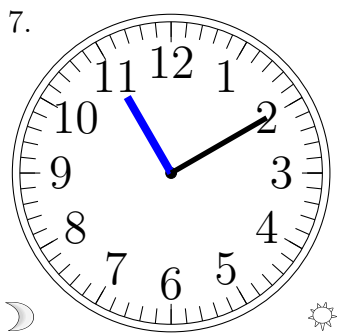
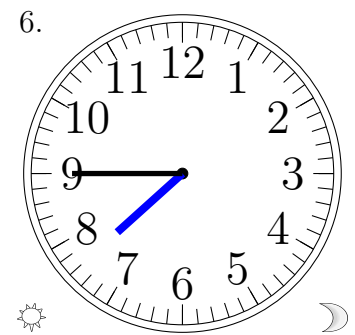
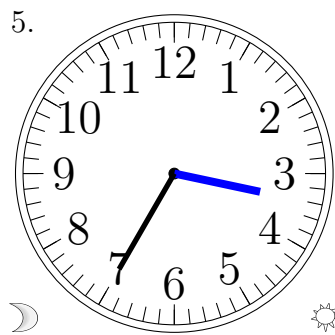
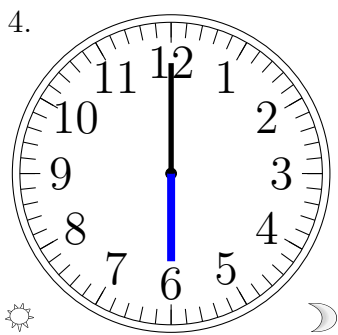
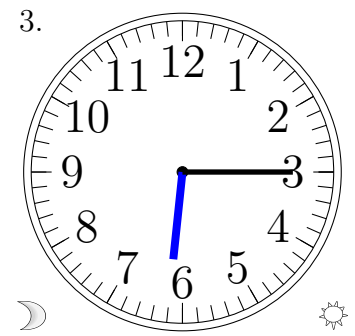
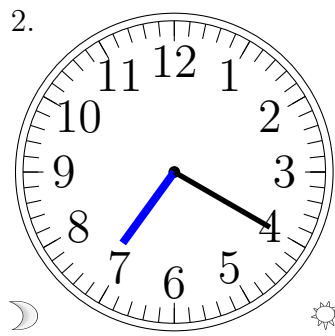
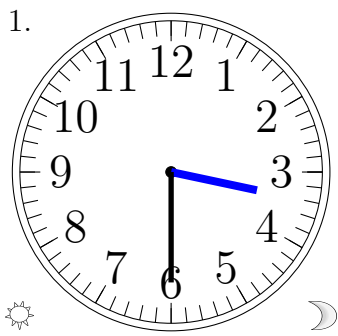


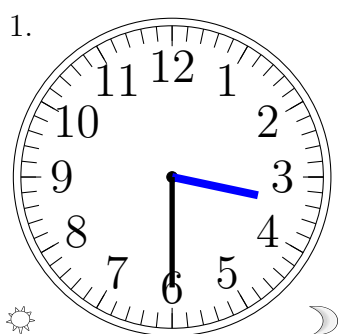
Lecture d'une Horloge Analogique (A)

Lisez chaque heure et écrivez-la dans l'espace sous l'horloge.

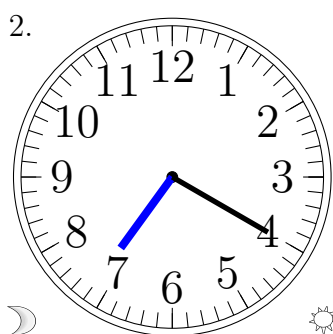


Lecture d'une Horloge Analogique (A) Solutions

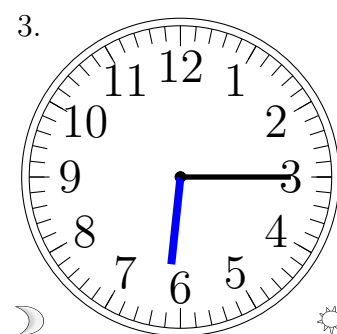
Lisez chaque heure et écrivez-la dans l'espace sous l'horloge.



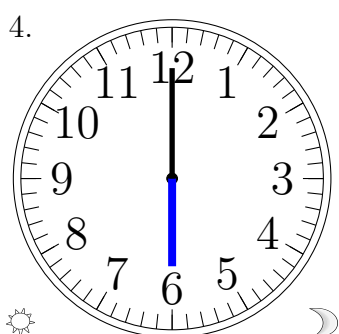
3:30 PM



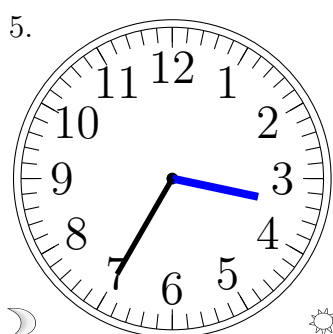
7:20 AM



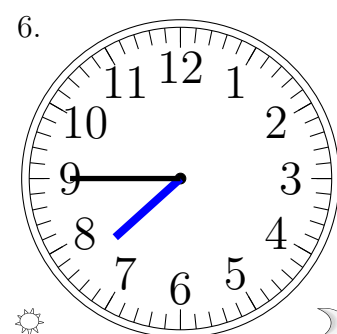
6:15 AM



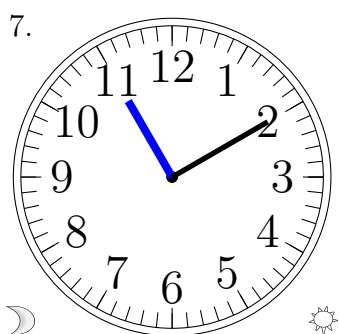
6:00 PM



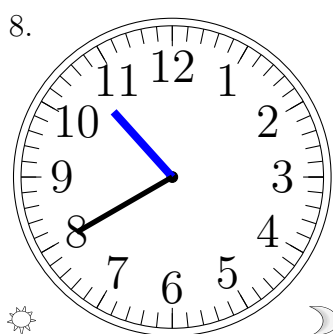
3:35 AM



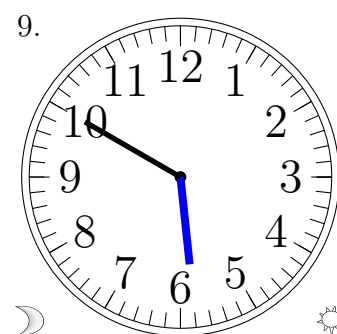
7:45 PM



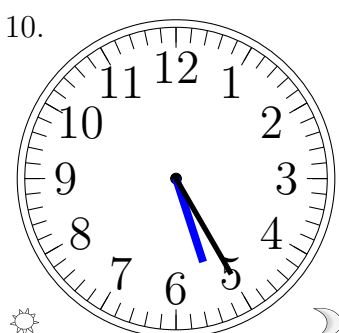
11:10 AM



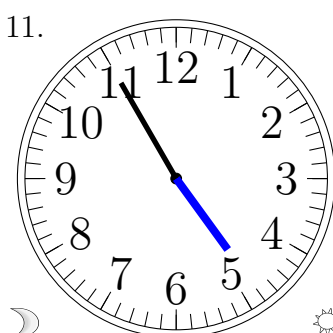
10:40 PM



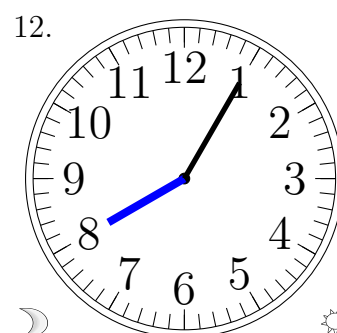
5:50 AM



5:25 PM



4:55 AM



8:05 AM