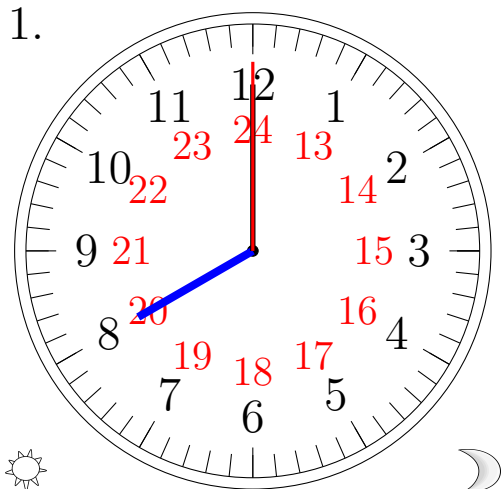


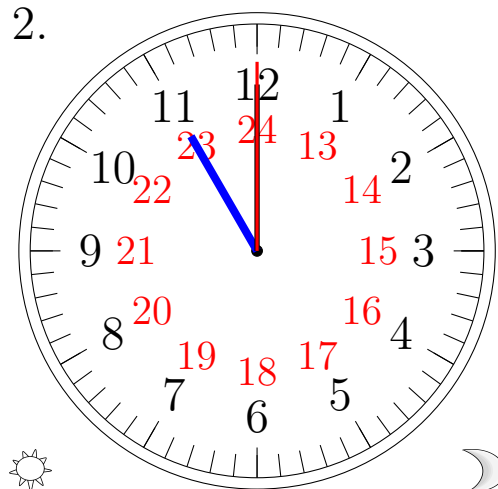
Lecture d'une Horloge Analogique (I)

Lisez chaque heure et écrivez-la dans l'espace sous l'horloge.

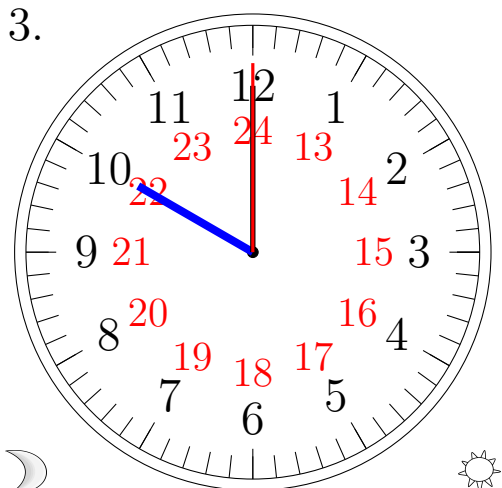
1.



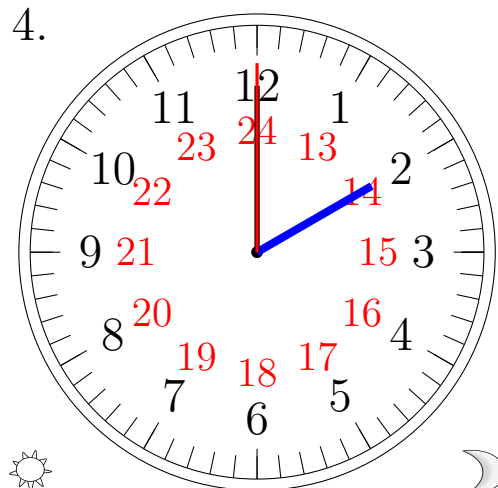
2.



3.



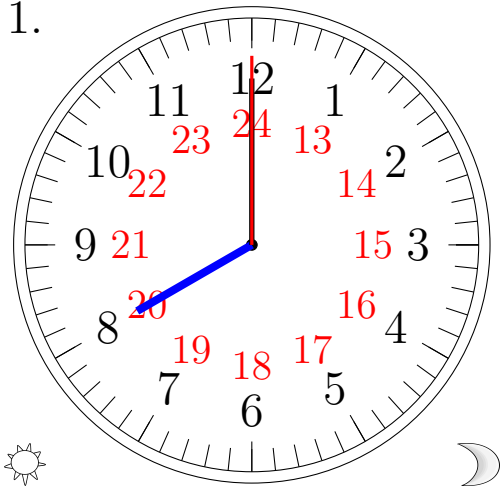
4.



Lecture d'une Horloge Analogique (I) Solutions

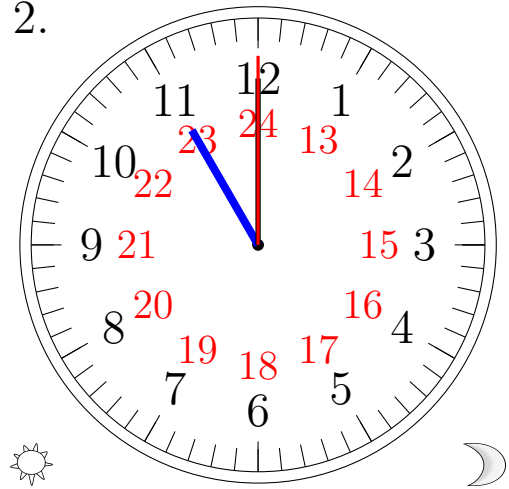
Lisez chaque heure et écrivez-la dans l'espace sous l'horloge.

1.



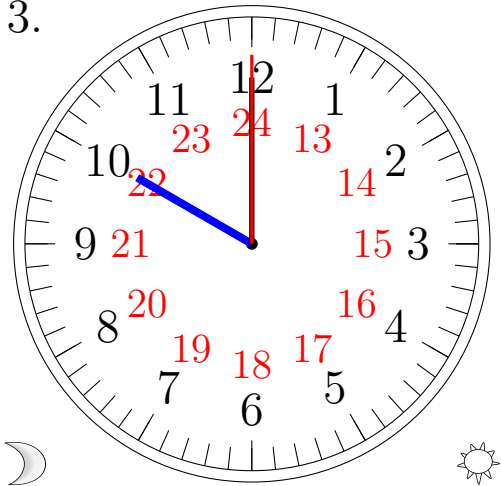
20:00:00

2.



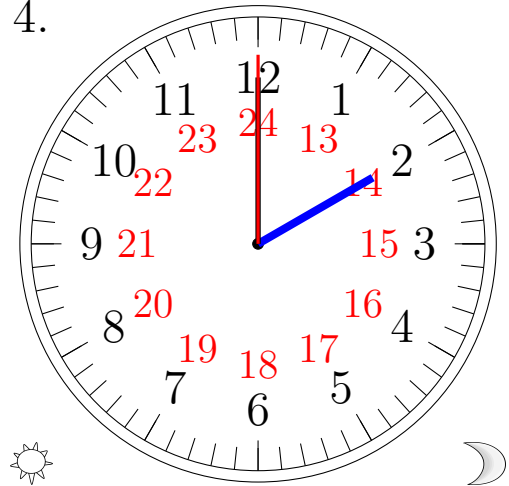
23:00:00

3.



10:00:00

4.



14:00:00