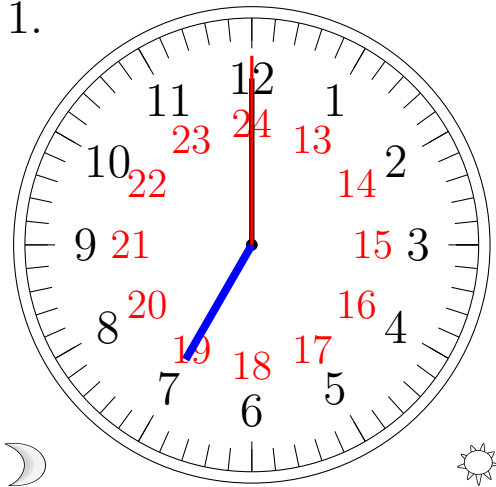


# Lecture d'une Horloge Analogique (D)

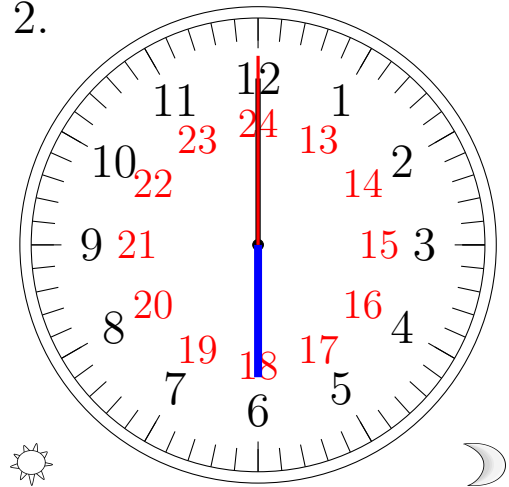
Lisez chaque heure et écrivez-la dans l'espace sous l'horloge.

1.



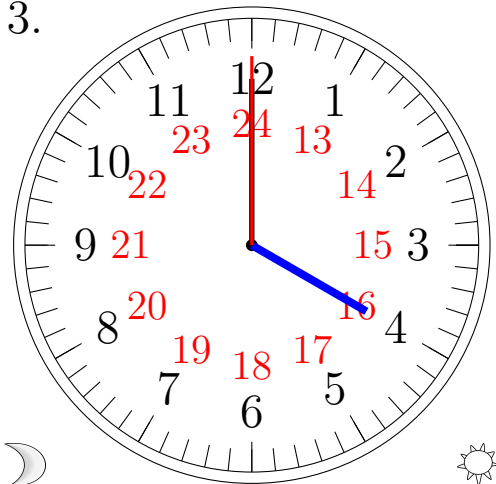
\_\_\_\_\_

2.



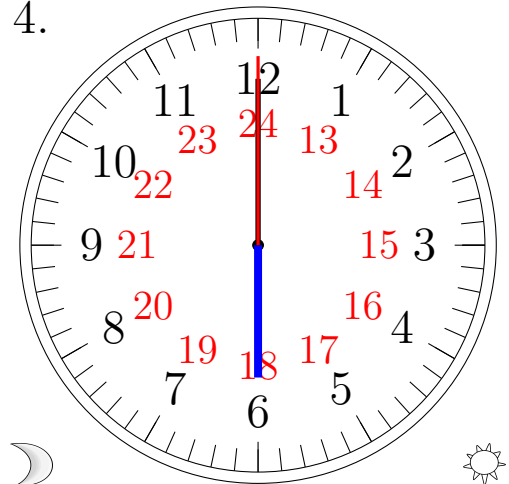
\_\_\_\_\_

3.



\_\_\_\_\_

4.

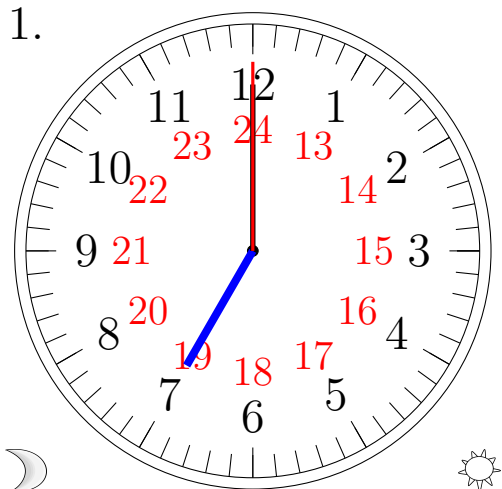


\_\_\_\_\_

# Lecture d'une Horloge Analogique (D) Solutions

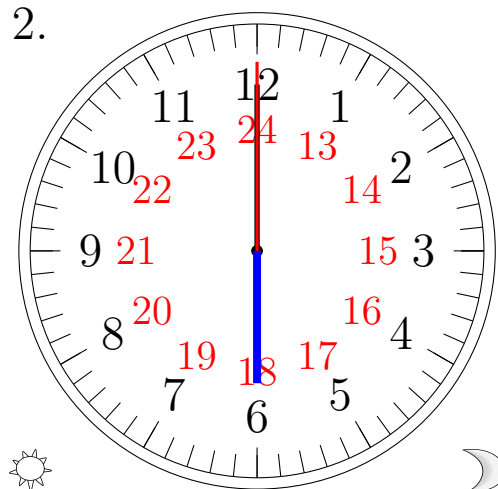
Lisez chaque heure et écrivez-la dans l'espace sous l'horloge.

1.



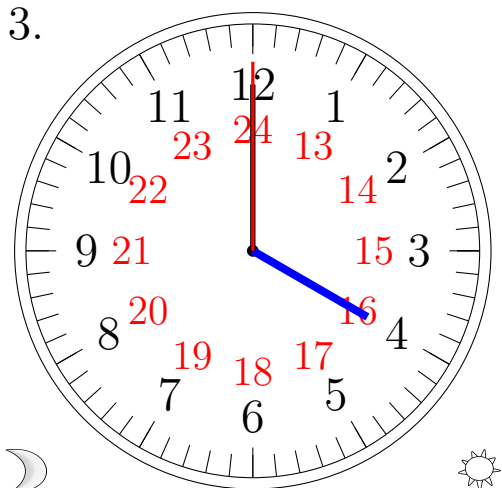
07:00:00

2.



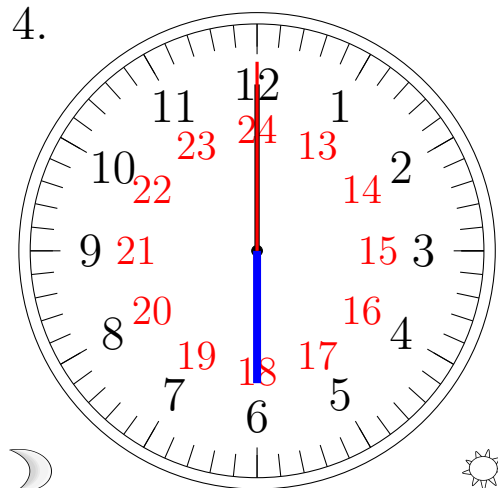
18:00:00

3.



04:00:00

4.



06:00:00