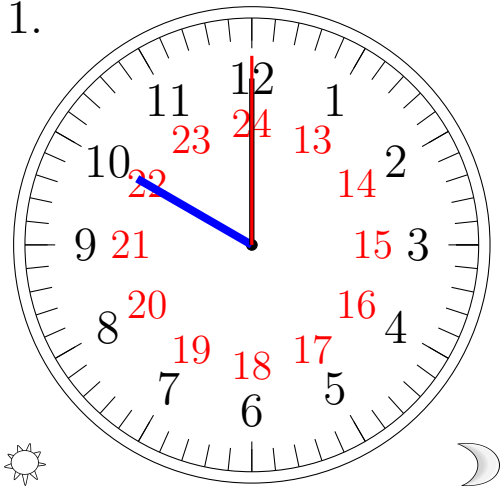


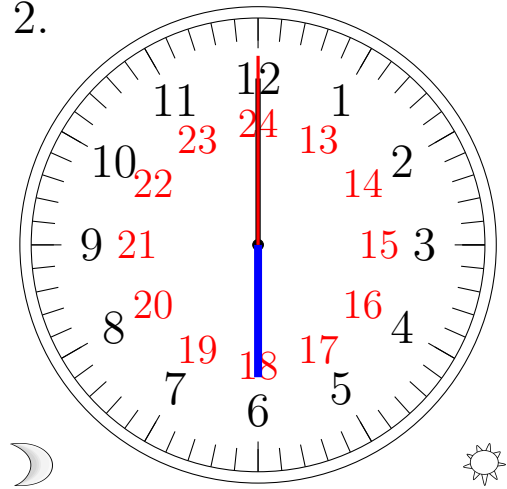
Lecture d'une Horloge Analogique (A)

Lisez chaque heure et écrivez-la dans l'espace sous l'horloge.

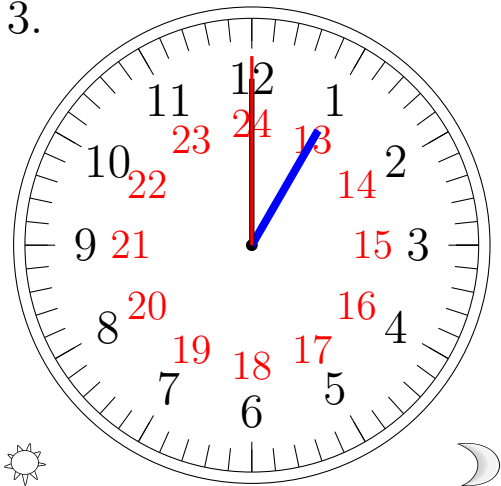
1.



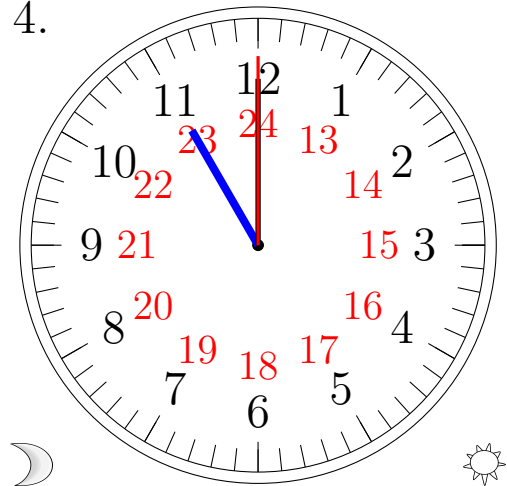
2.



3.



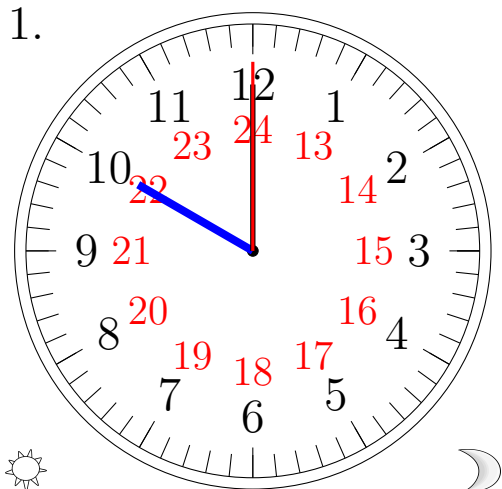
4.



Lecture d'une Horloge Analogique (A) Solutions

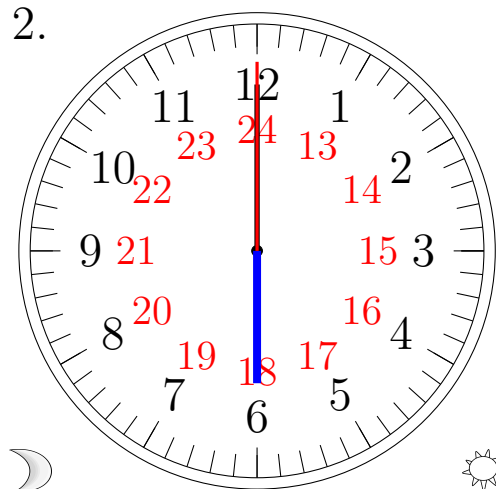
Lisez chaque heure et écrivez-la dans l'espace sous l'horloge.

1.



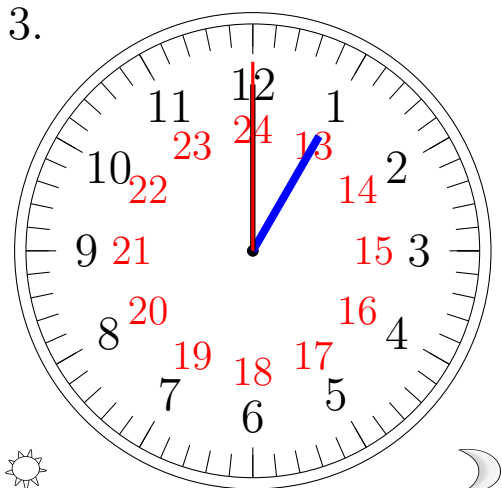
22:00:00

2.



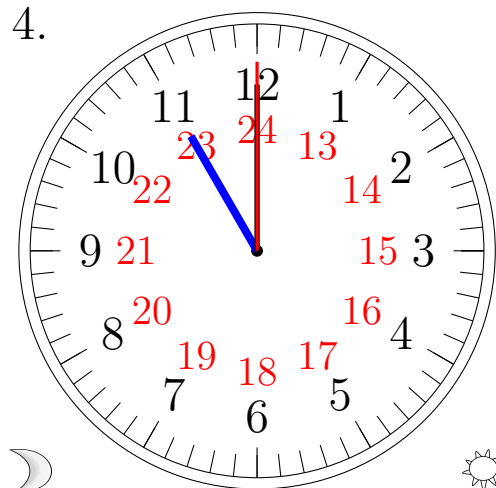
06:00:00

3.



13:00:00

4.



11:00:00