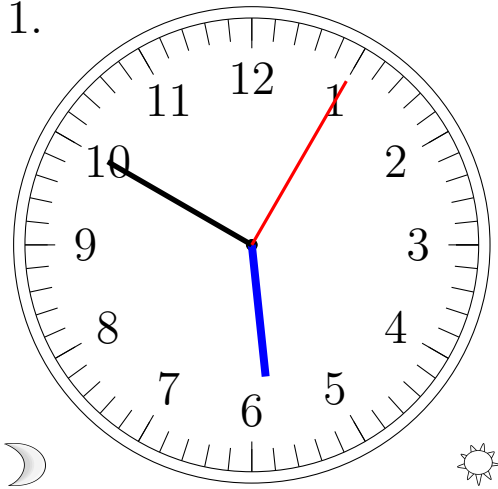


# Lecture d'une Horloge Analogique (C)

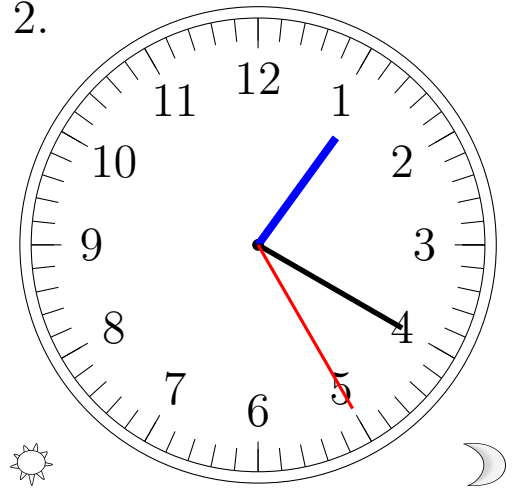
Lisez chaque heure et écrivez-la dans l'espace sous l'horloge.

1.



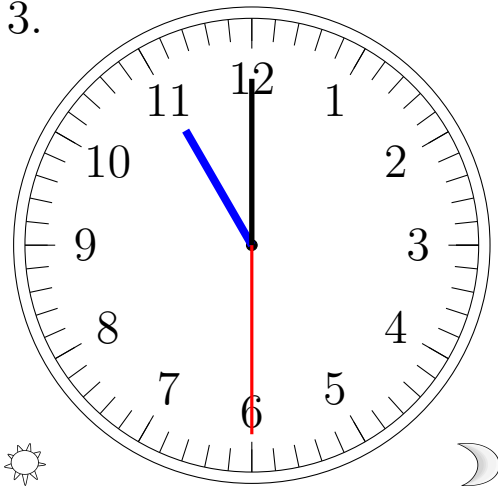
\_\_\_\_\_

2.



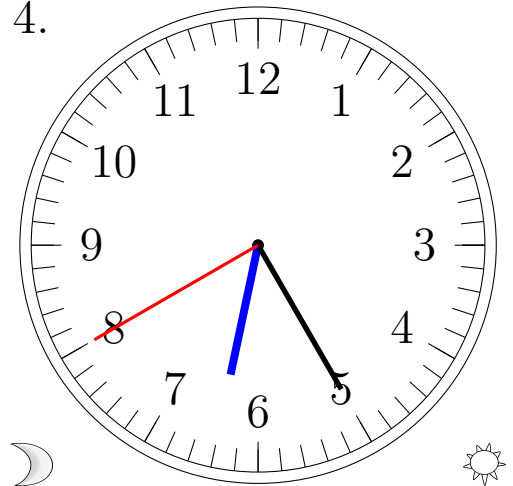
\_\_\_\_\_

3.



\_\_\_\_\_

4.

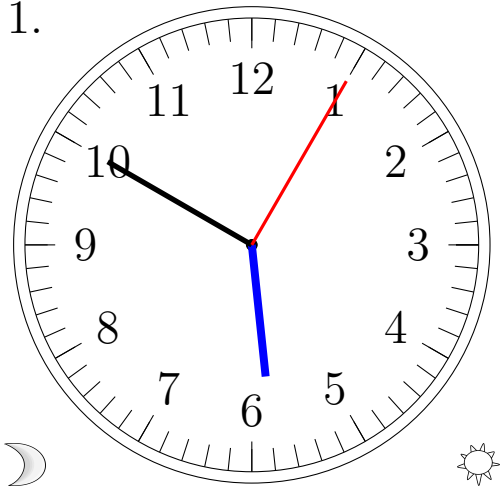


\_\_\_\_\_

# Lecture d'une Horloge Analogique (C) Solutions

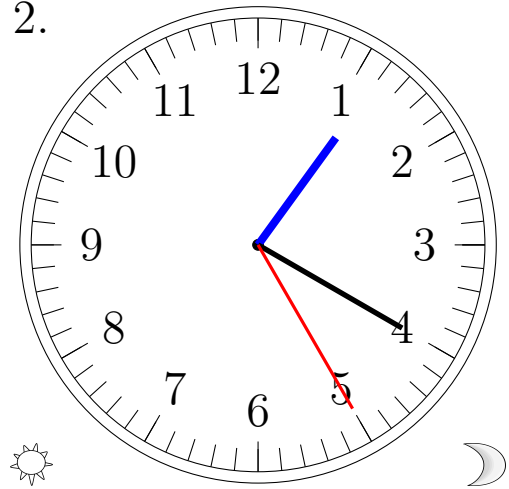
Lisez chaque heure et écrivez-la dans l'espace sous l'horloge.

1.



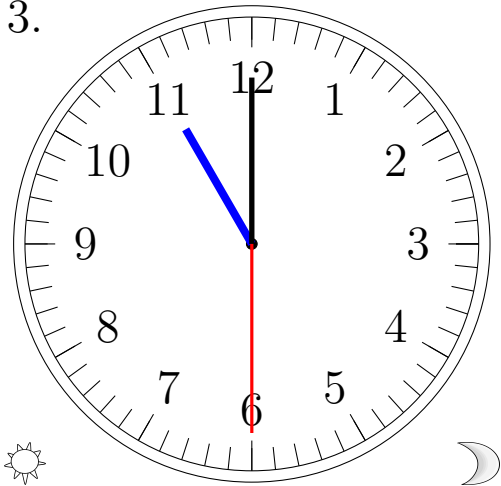
5:50:05 AM

2.



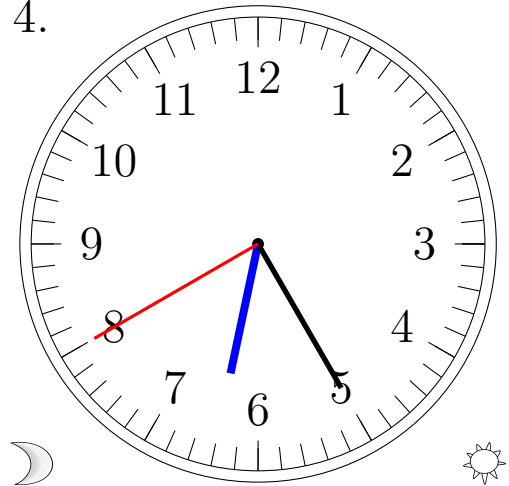
1:20:25 PM

3.



11:00:30 PM

4.



6:25:40 AM