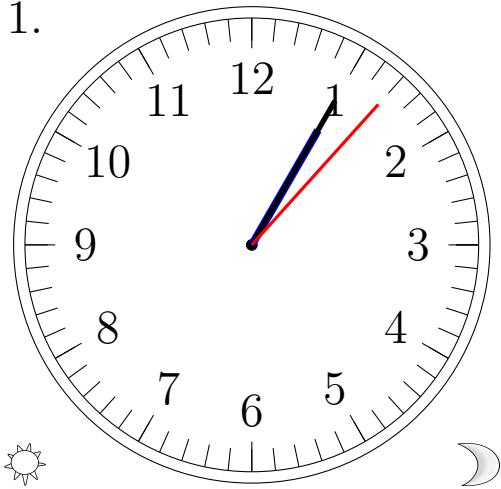


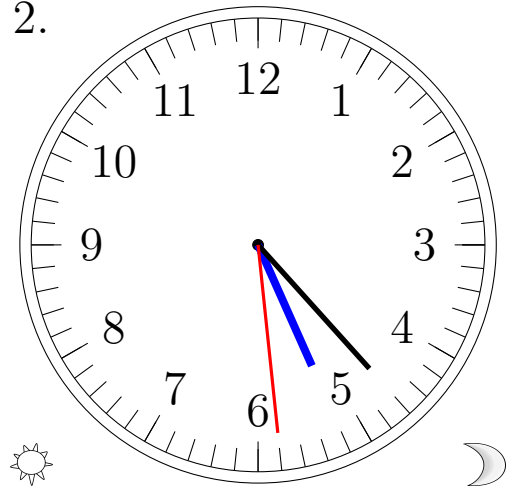
# Lecture d'une Horloge Analogique (C)

Lisez chaque heure et écrivez-la dans l'espace sous l'horloge.

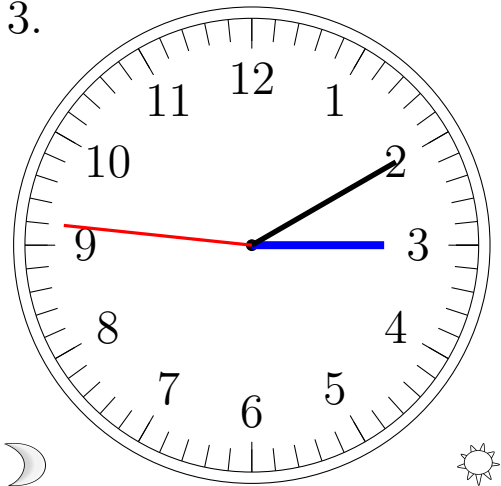
1.



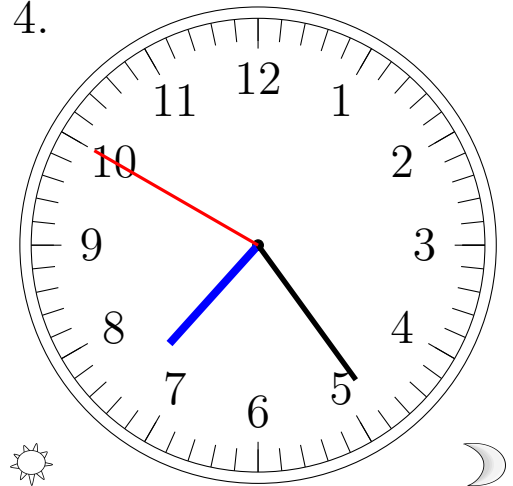
2.



3.



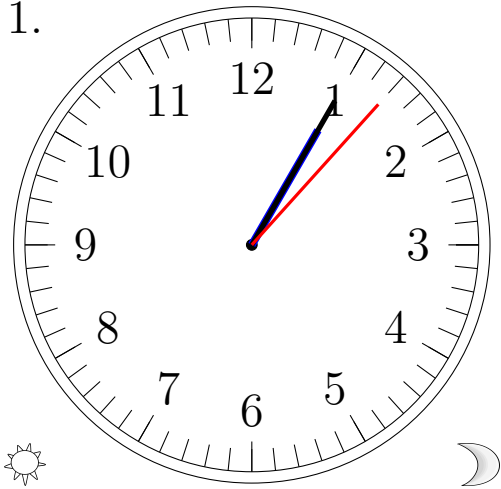
4.



# Lecture d'une Horloge Analogique (C) Solutions

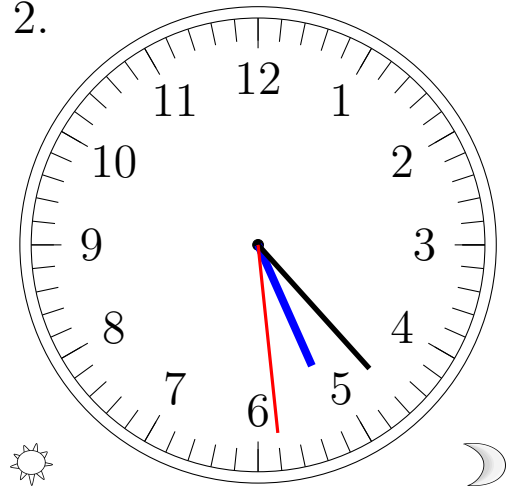
Lisez chaque heure et écrivez-la dans l'espace sous l'horloge.

1.



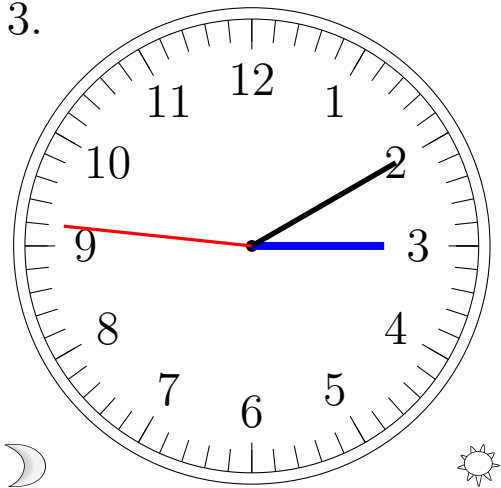
1:05:07 PM

2.



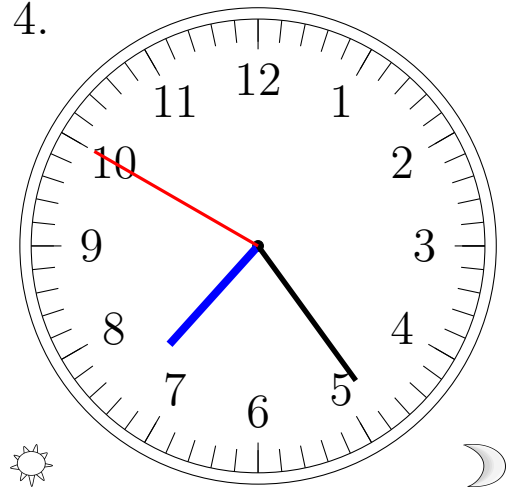
5:23:29 PM

3.



3:10:46 AM

4.



7:24:50 PM