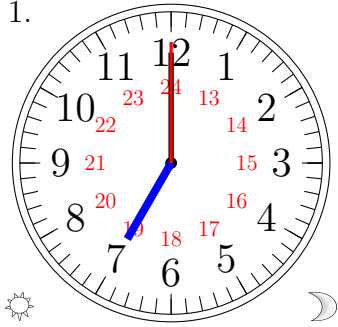


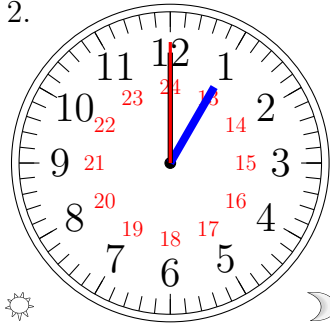
Lecture d'une Horloge Analogique (A)

Lisez chaque heure et écrivez-la dans l'espace sous l'horloge.

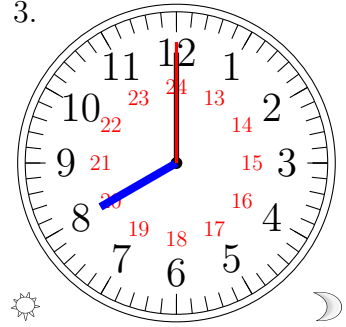
1.



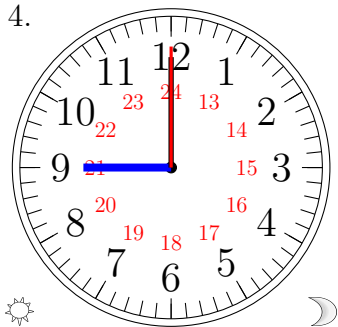
2.



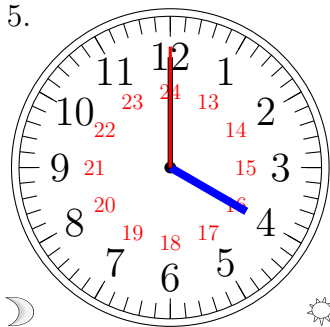
3.



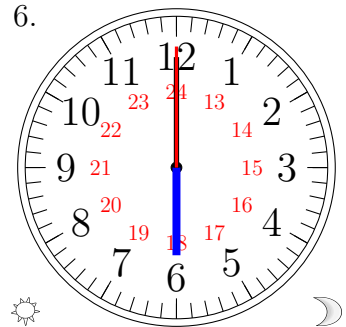
4.



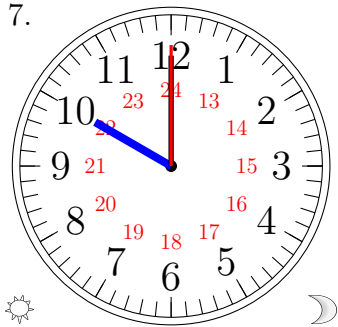
5.



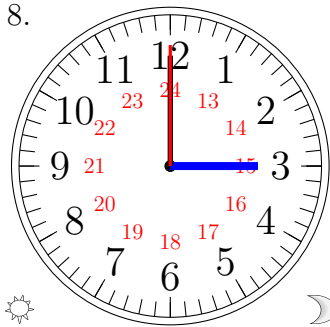
6.



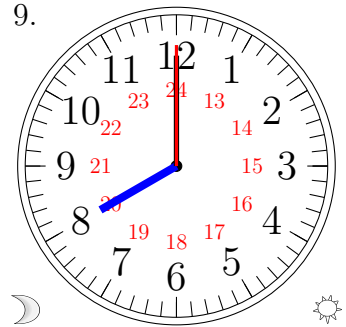
7.



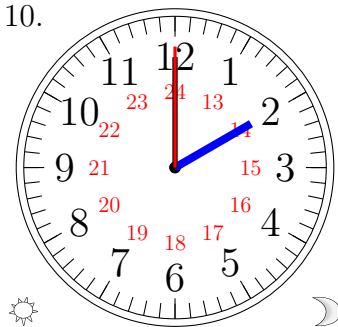
8.



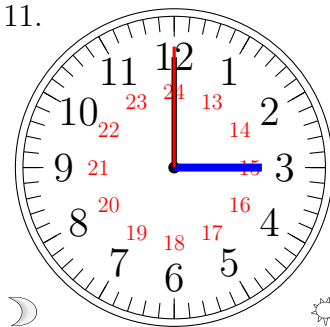
9.



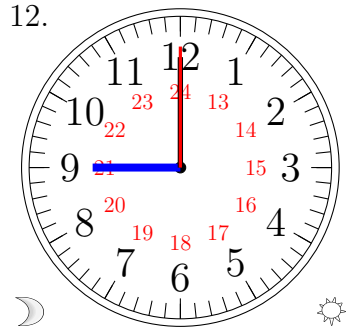
10.



11.



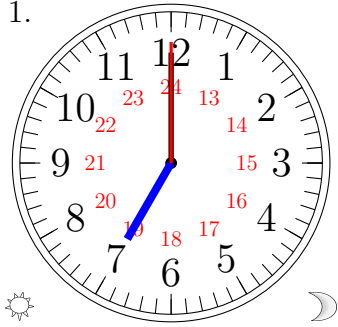
12.



Lecture d'une Horloge Analogique (A) Solutions

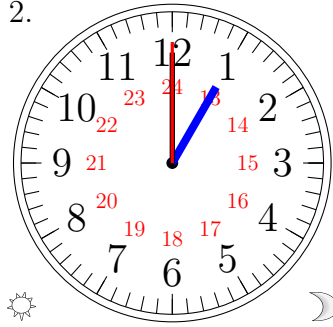
Lisez chaque heure et écrivez-la dans l'espace sous l'horloge.

1.



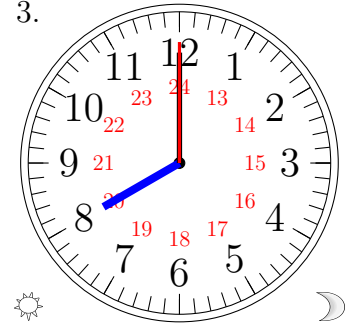
19:00:00

2.



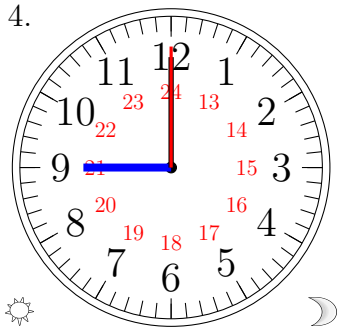
13:00:00

3.



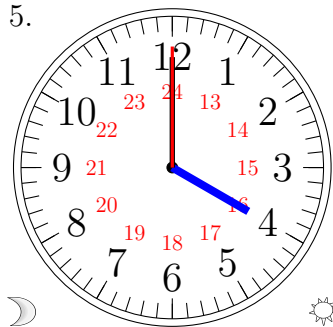
20:00:00

4.



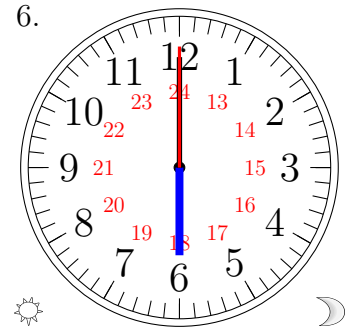
21:00:00

5.



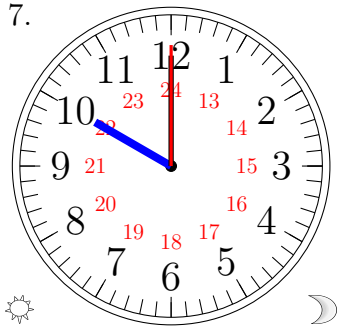
04:00:00

6.



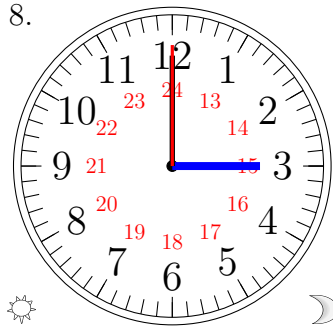
18:00:00

7.



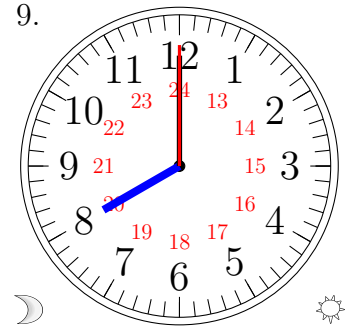
22:00:00

8.



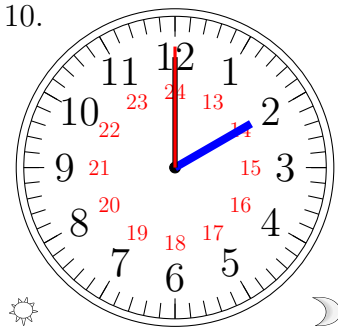
15:00:00

9.



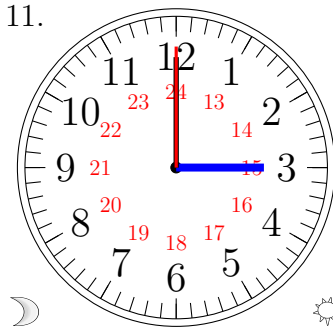
08:00:00

10.



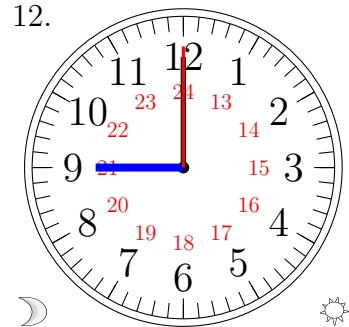
14:00:00

11.



03:00:00

12.

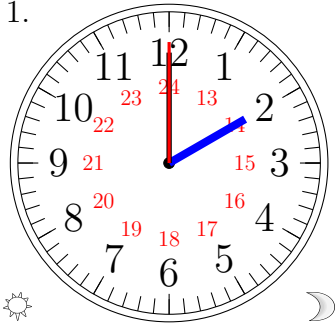


09:00:00

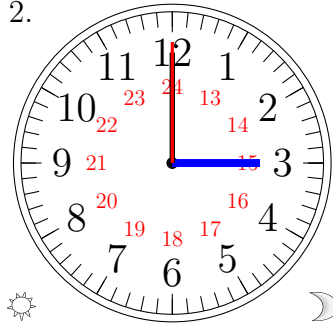
Lecture d'une Horloge Analogique (B)

Lisez chaque heure et écrivez-la dans l'espace sous l'horloge.

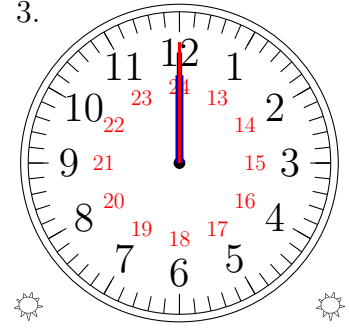
1.



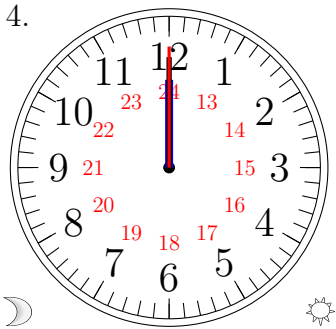
2.



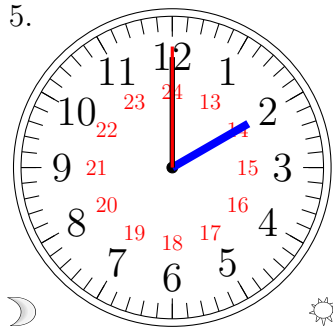
3.



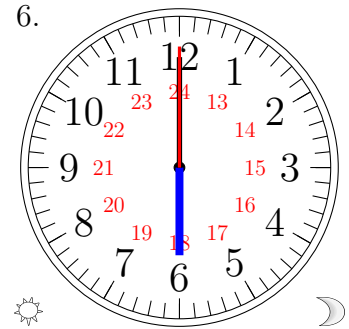
4.



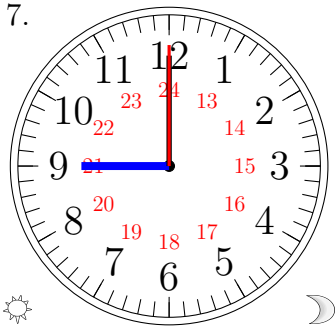
5.



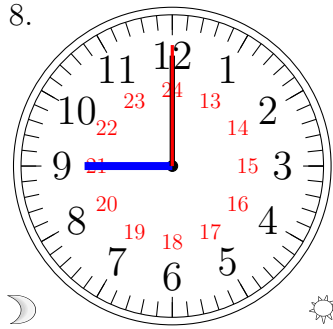
6.



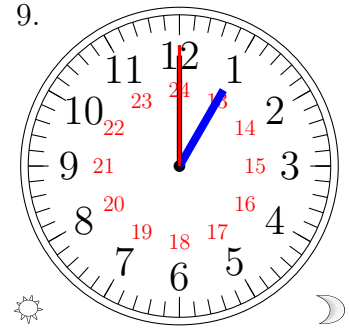
7.



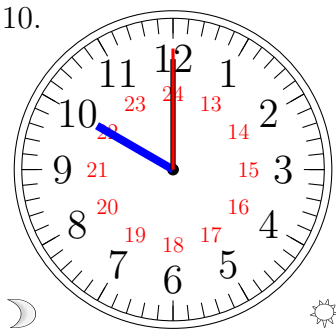
8.



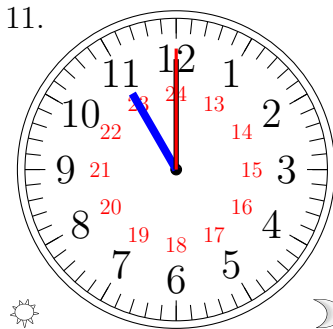
9.



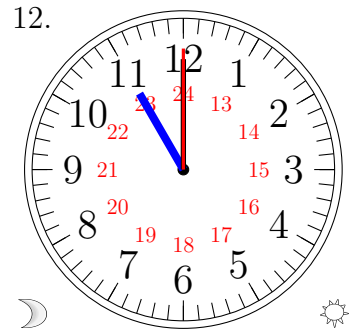
10.



11.



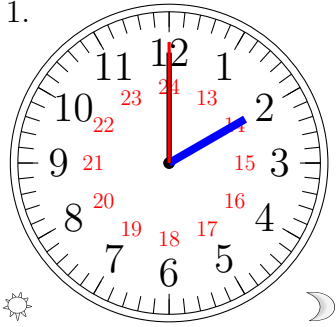
12.



Lecture d'une Horloge Analogique (B) Solutions

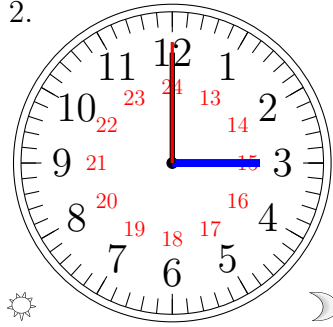
Lisez chaque heure et écrivez-la dans l'espace sous l'horloge.

1.



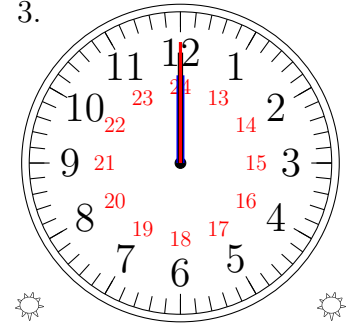
14:00:00

2.



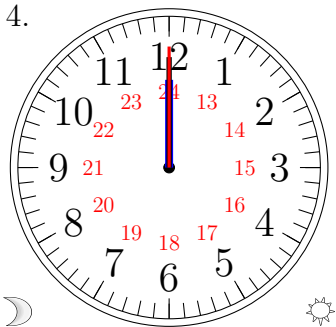
15:00:00

3.



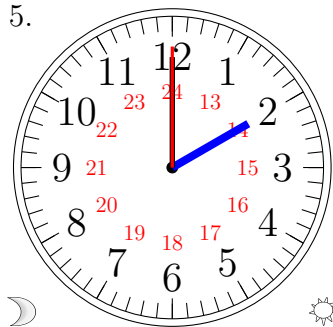
12:00:00

4.



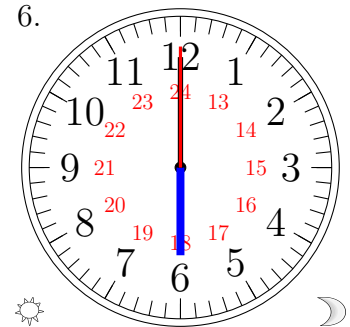
00:00:00

5.



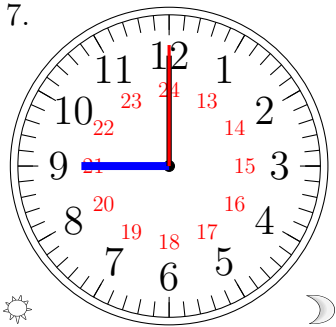
02:00:00

6.



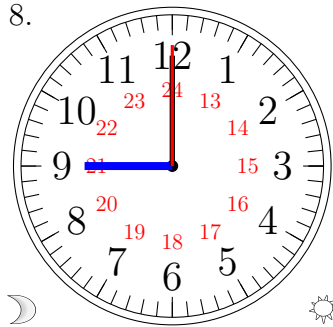
18:00:00

7.



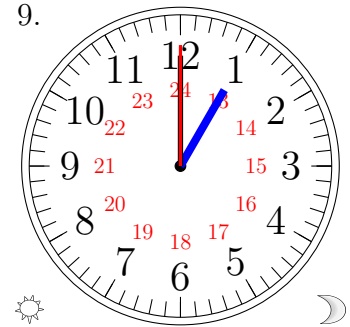
21:00:00

8.



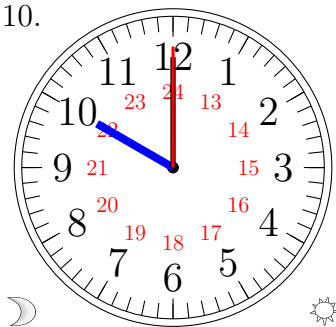
09:00:00

9.



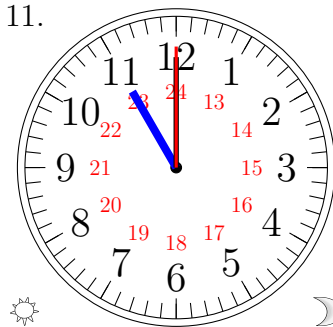
13:00:00

10.



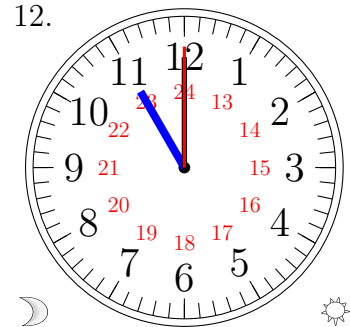
10:00:00

11.



23:00:00

12.

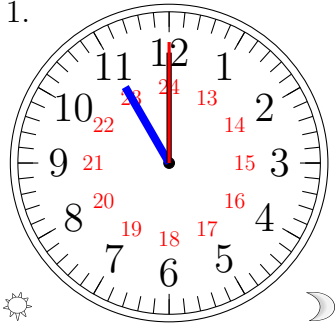


11:00:00

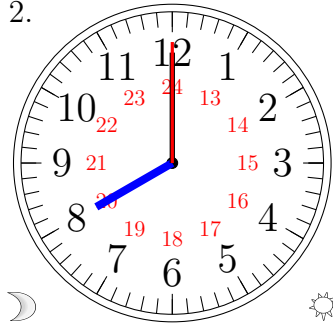
Lecture d'une Horloge Analogique (C)

Lisez chaque heure et écrivez-la dans l'espace sous l'horloge.

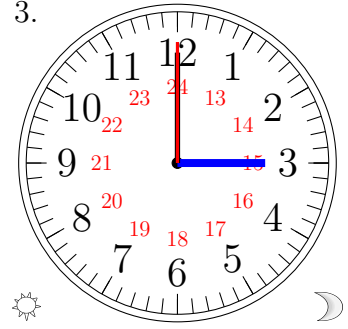
1.



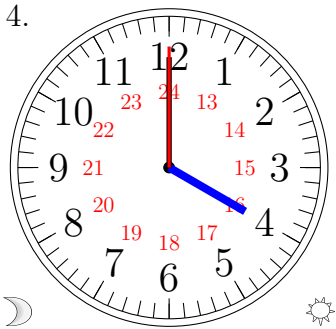
2.



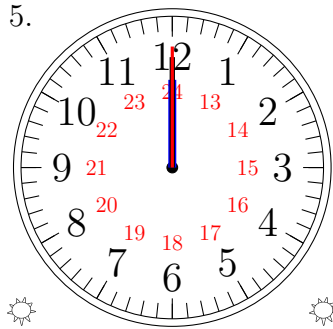
3.



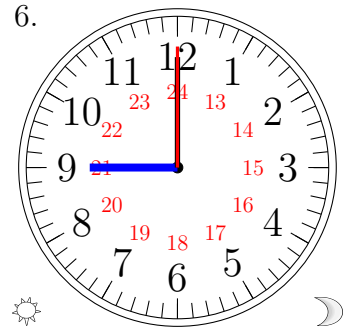
4.



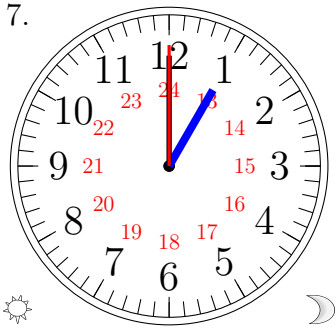
5.



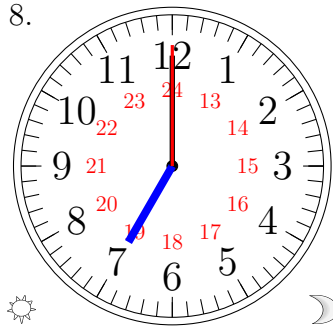
6.



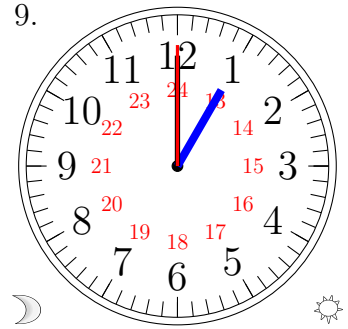
7.



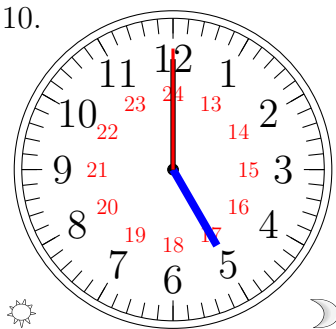
8.



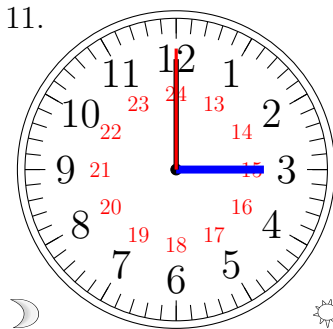
9.



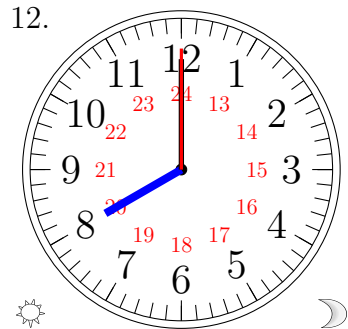
10.



11.



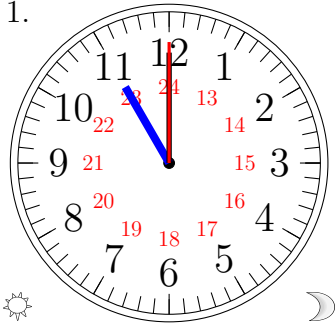
12.



Lecture d'une Horloge Analogique (C) Solutions

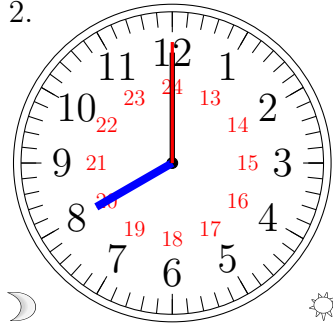
Lisez chaque heure et écrivez-la dans l'espace sous l'horloge.

1.



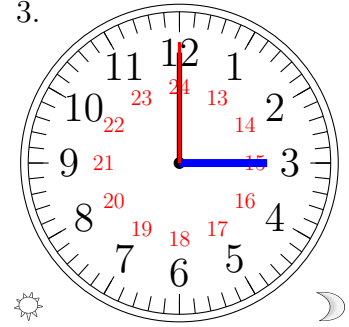
23:00:00

2.



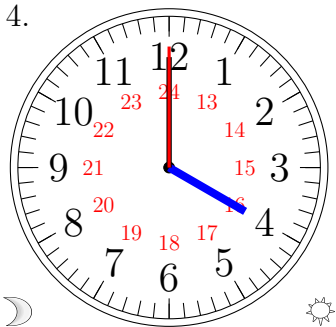
08:00:00

3.



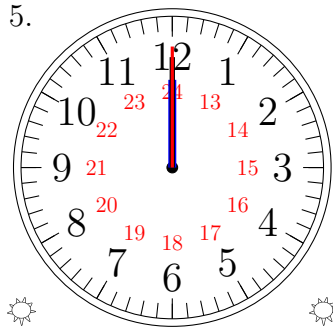
15:00:00

4.



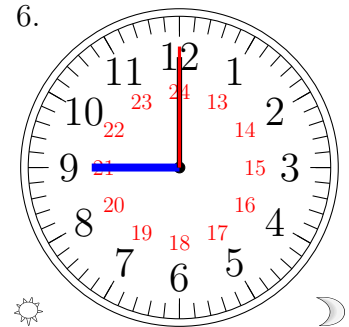
04:00:00

5.



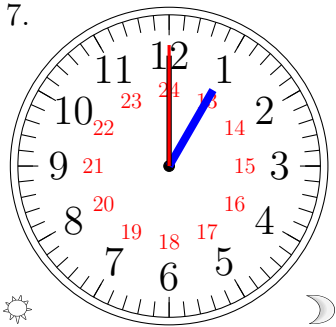
12:00:00

6.



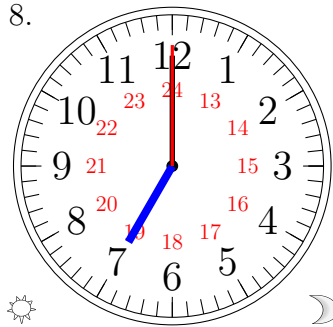
21:00:00

7.



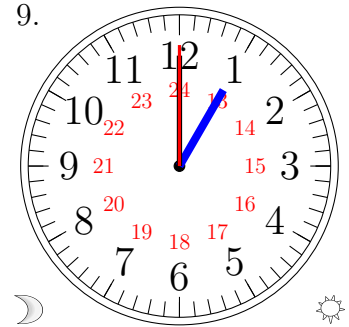
13:00:00

8.



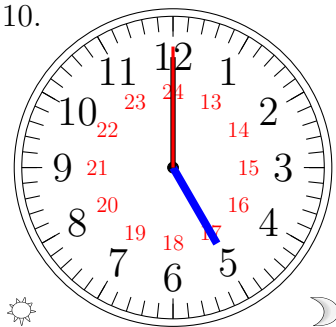
19:00:00

9.



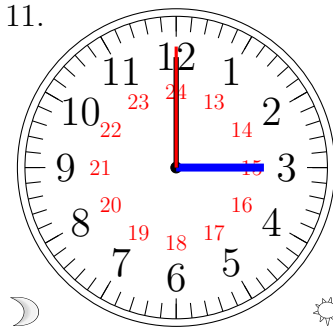
01:00:00

10.



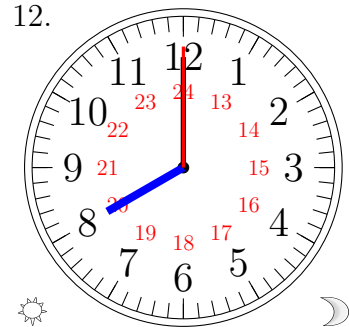
17:00:00

11.



03:00:00

12.

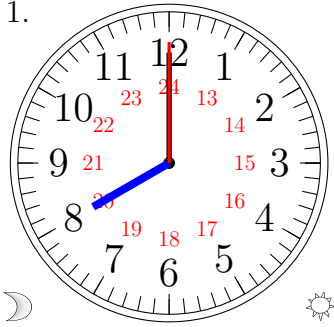


20:00:00

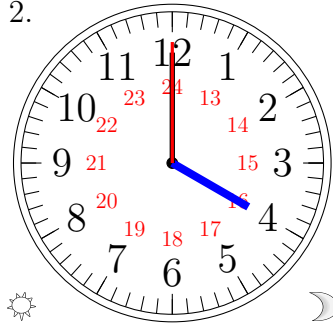
Lecture d'une Horloge Analogique (D)

Lisez chaque heure et écrivez-la dans l'espace sous l'horloge.

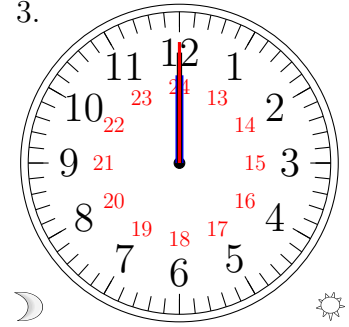
1.



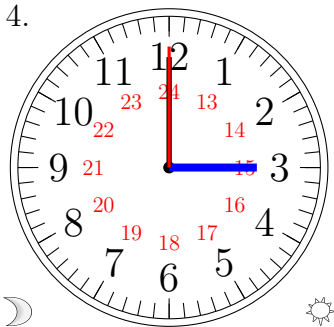
2.



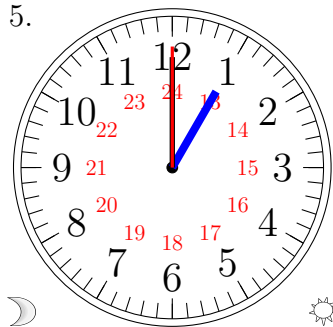
3.



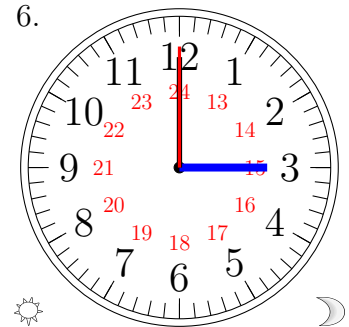
4.



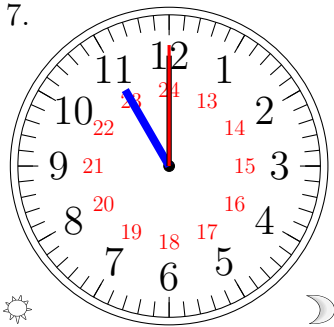
5.



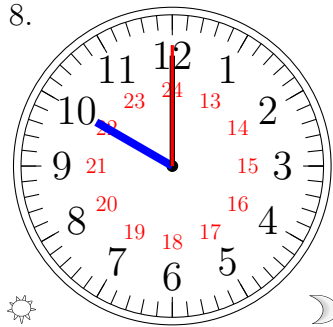
6.



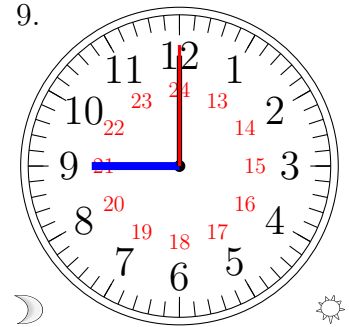
7.



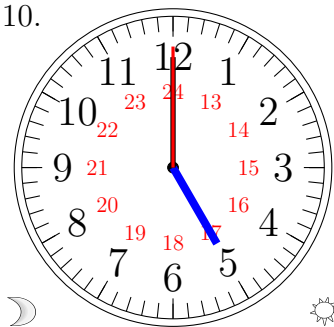
8.



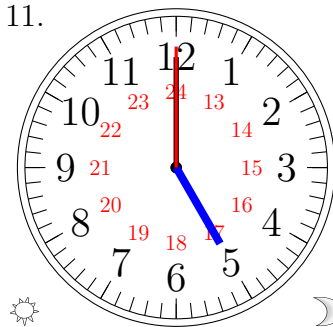
9.



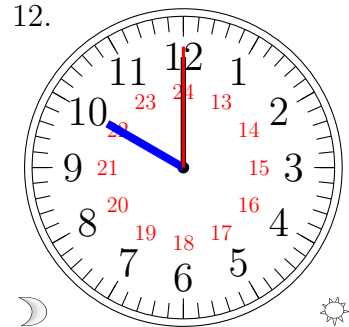
10.



11.



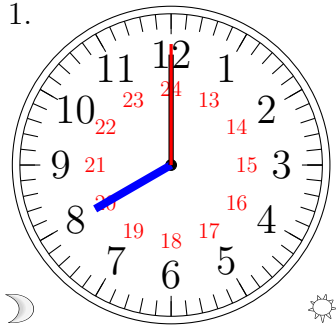
12.



Lecture d'une Horloge Analogique (D) Solutions

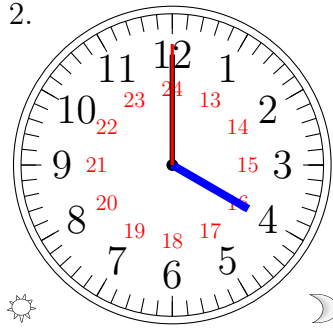
Lisez chaque heure et écrivez-la dans l'espace sous l'horloge.

1.



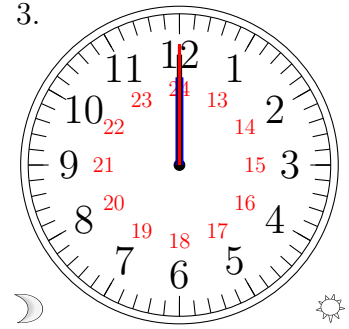
08:00:00

2.



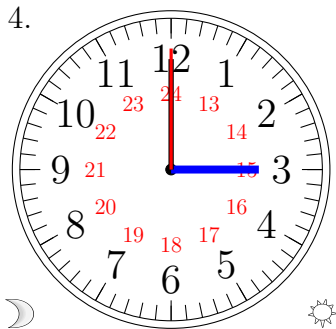
16:00:00

3.



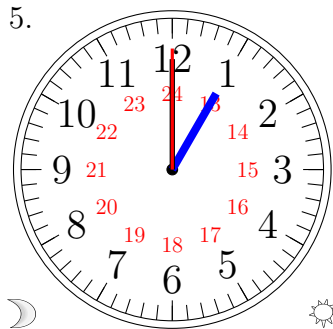
00:00:00

4.



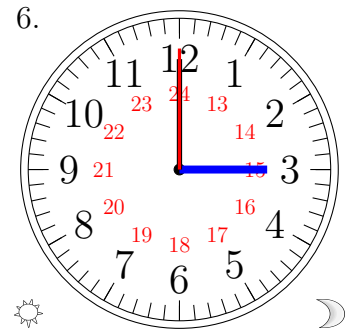
03:00:00

5.



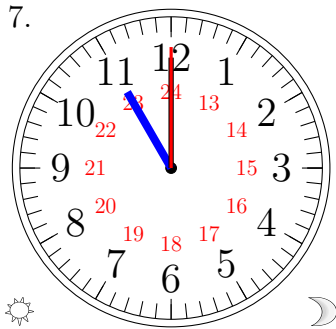
01:00:00

6.



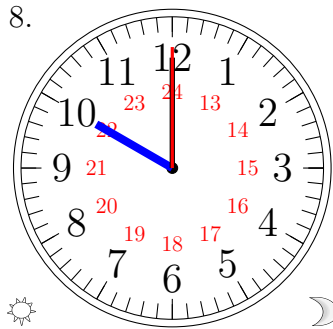
15:00:00

7.



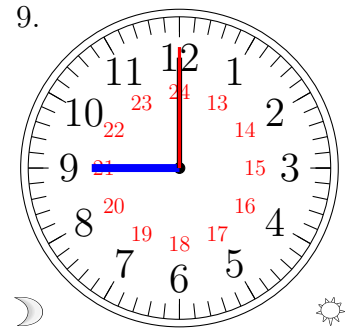
23:00:00

8.



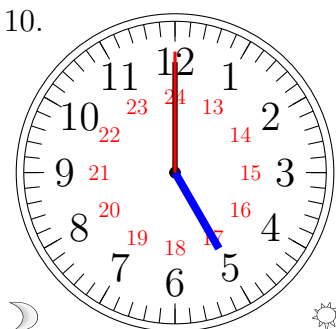
22:00:00

9.



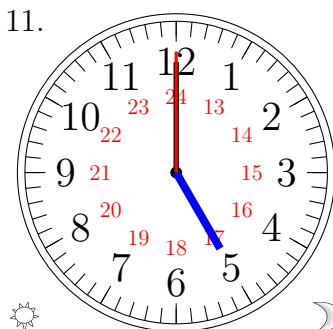
09:00:00

10.



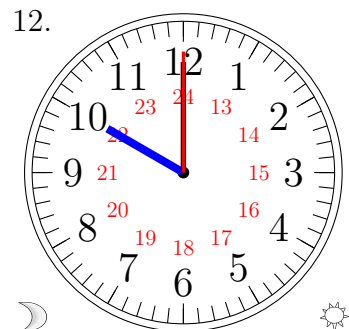
05:00:00

11.



17:00:00

12.

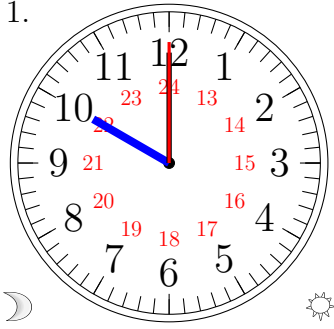


10:00:00

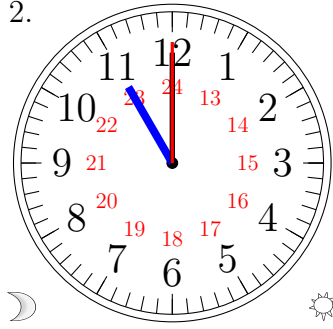
Lecture d'une Horloge Analogique (E)

Lisez chaque heure et écrivez-la dans l'espace sous l'horloge.

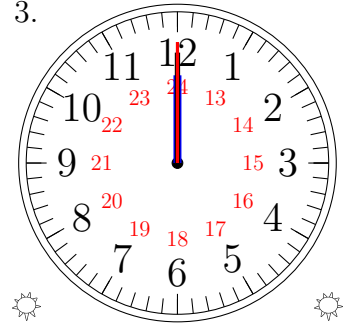
1.



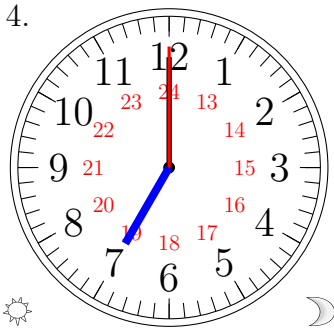
2.



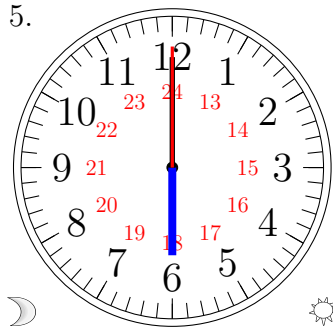
3.



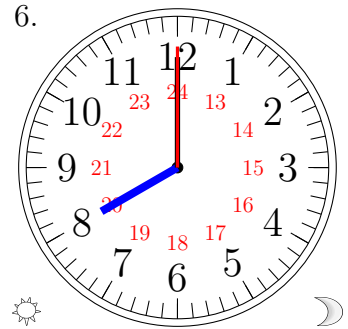
4.



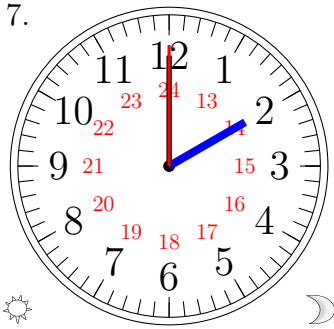
5.



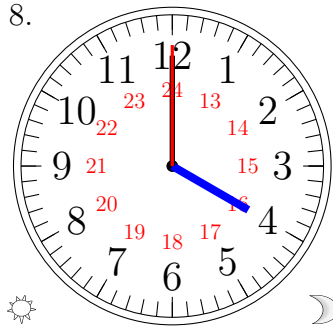
6.



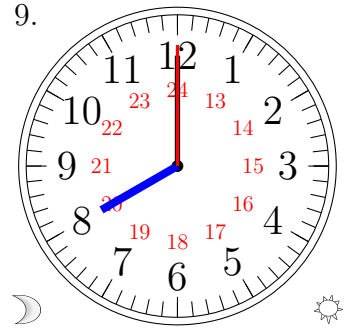
7.



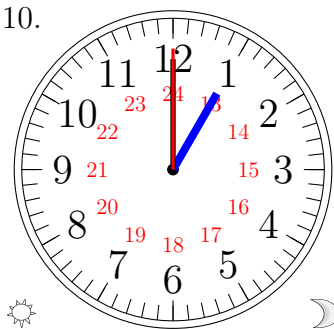
8.



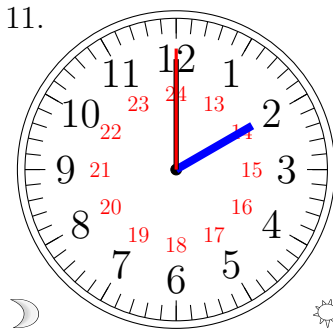
9.



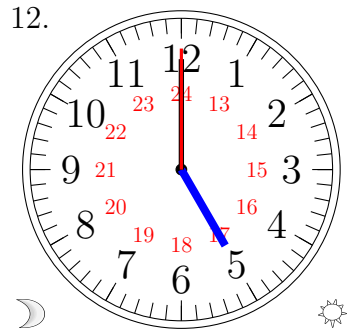
10.



11.



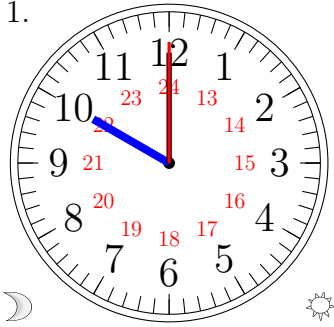
12.



Lecture d'une Horloge Analogique (E) Solutions

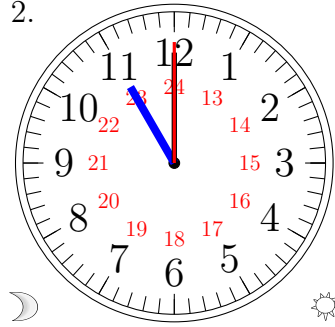
Lisez chaque heure et écrivez-la dans l'espace sous l'horloge.

1.



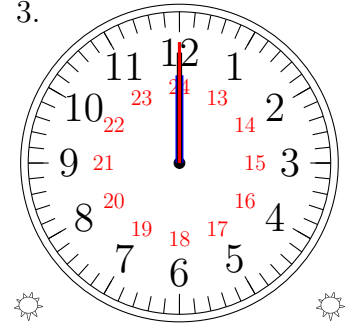
10:00:00

2.



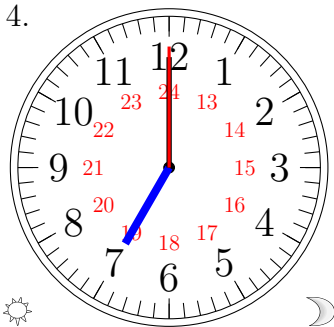
11:00:00

3.



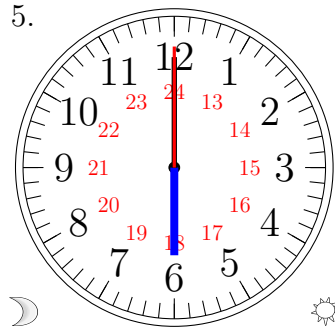
12:00:00

4.



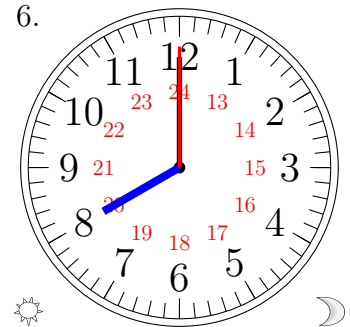
19:00:00

5.



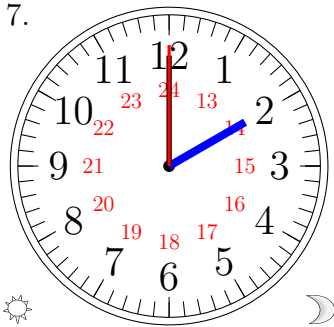
06:00:00

6.



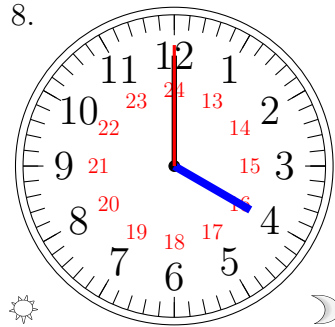
20:00:00

7.



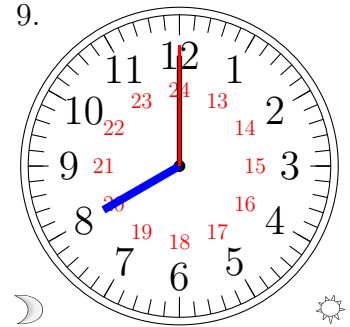
14:00:00

8.



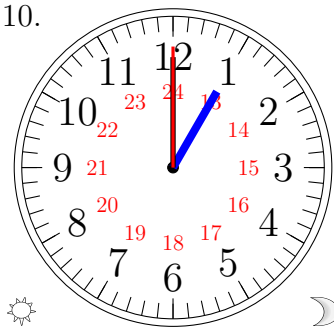
16:00:00

9.



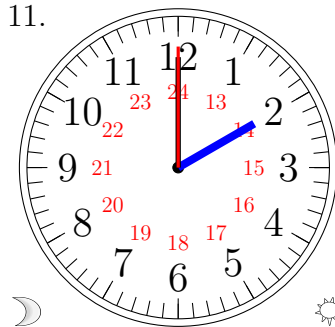
08:00:00

10.



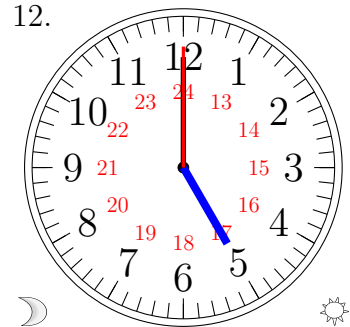
13:00:00

11.



02:00:00

12.

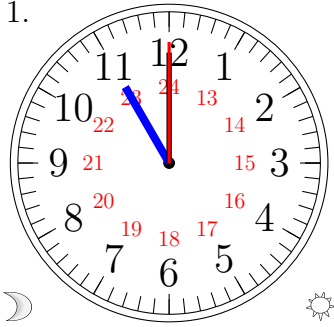


05:00:00

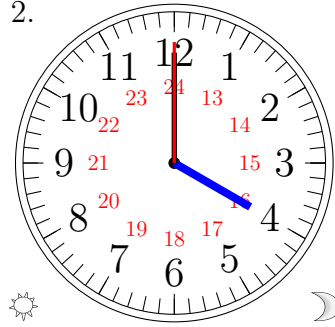
Lecture d'une Horloge Analogique (F)

Lisez chaque heure et écrivez-la dans l'espace sous l'horloge.

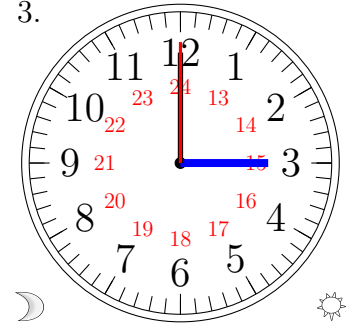
1.



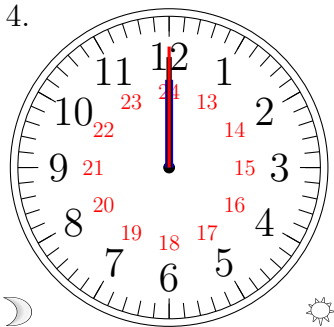
2.



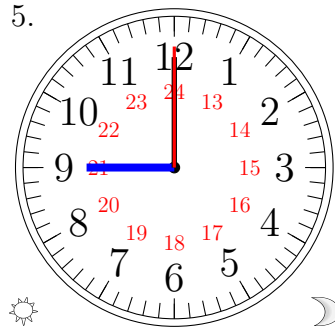
3.



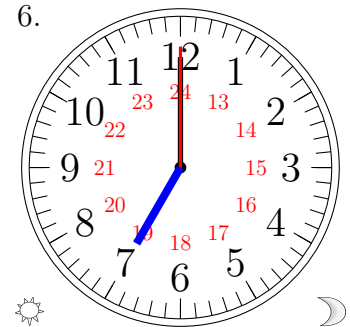
4.



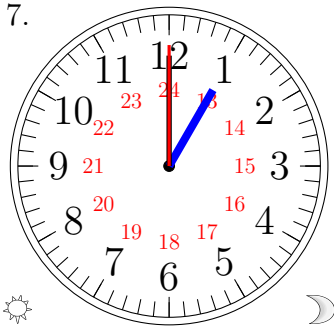
5.



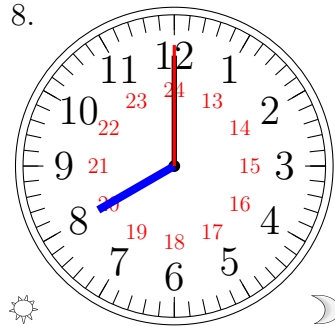
6.



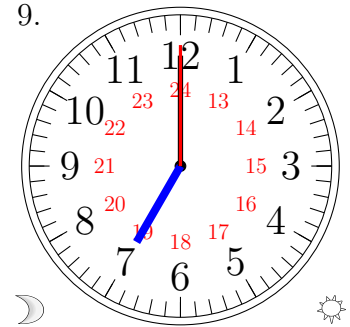
7.



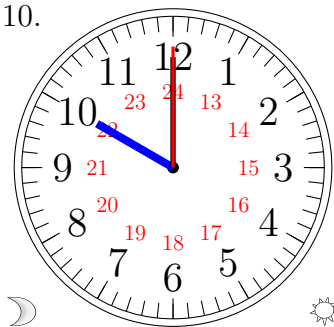
8.



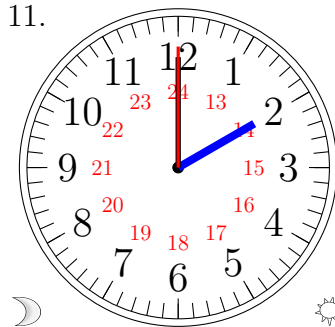
9.



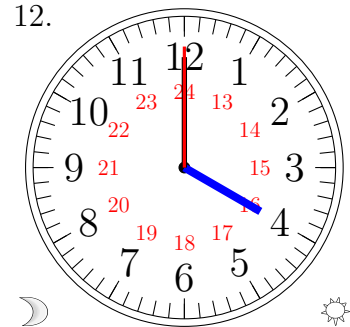
10.



11.

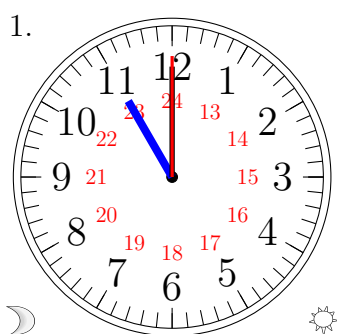


12.

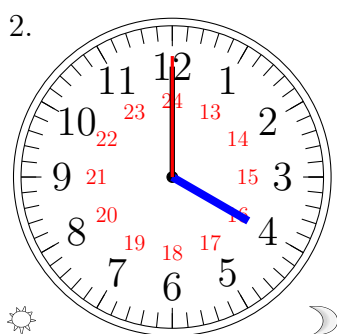


Lecture d'une Horloge Analogique (F) Solutions

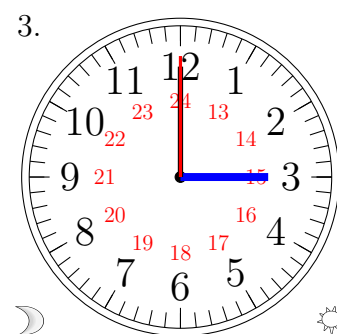
Lisez chaque heure et écrivez-la dans l'espace sous l'horloge.



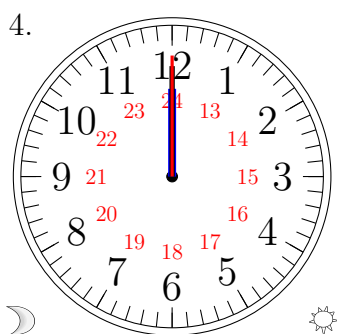
11:00:00



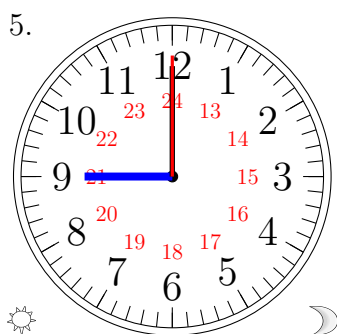
16:00:00



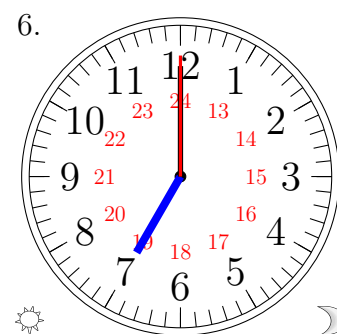
03:00:00



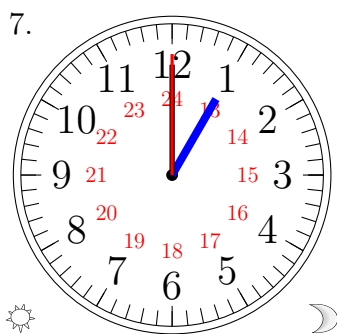
00:00:00



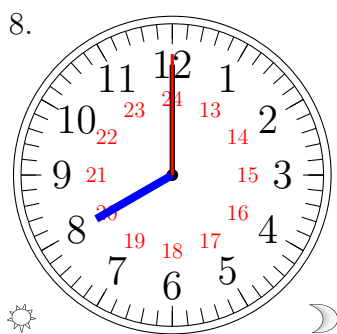
21:00:00



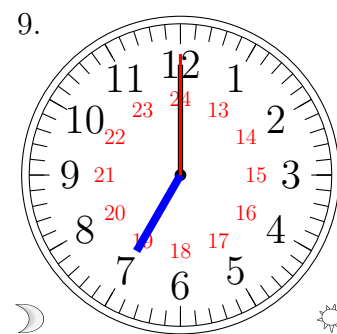
19:00:00



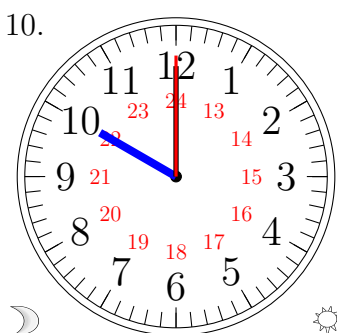
13:00:00



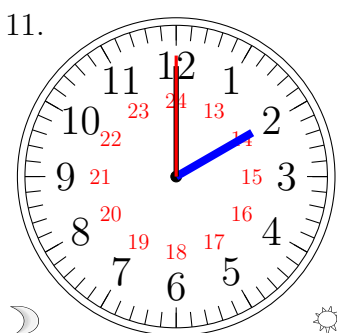
20:00:00



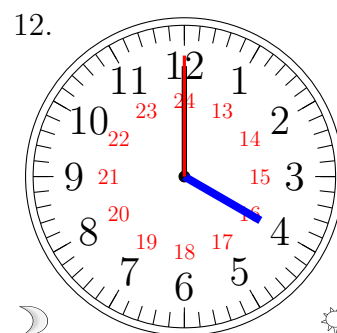
07:00:00



10:00:00



02:00:00

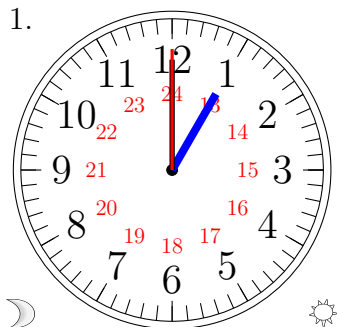


04:00:00

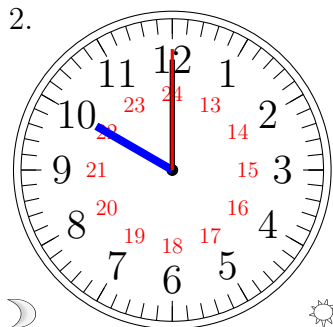
Lecture d'une Horloge Analogique (G)

Lisez chaque heure et écrivez-la dans l'espace sous l'horloge.

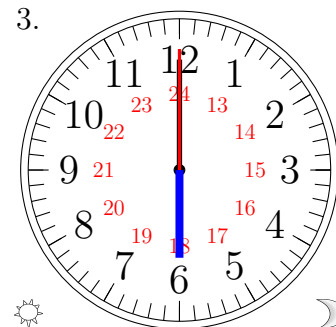
1.



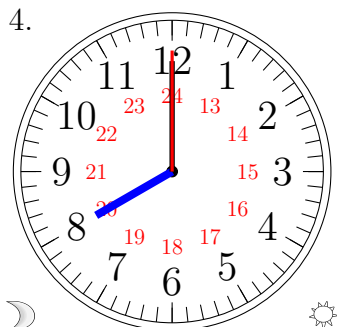
2.



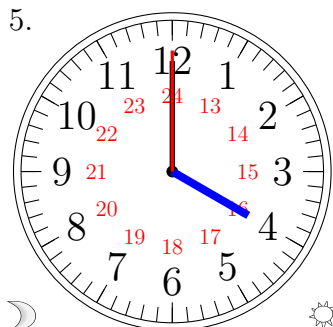
3.



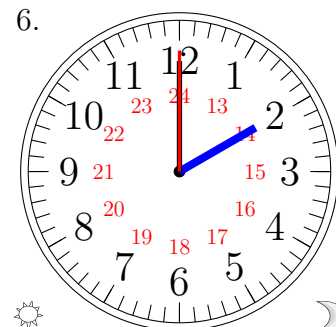
4.



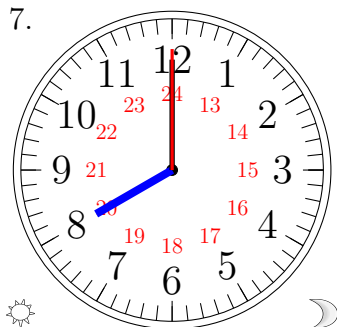
5.



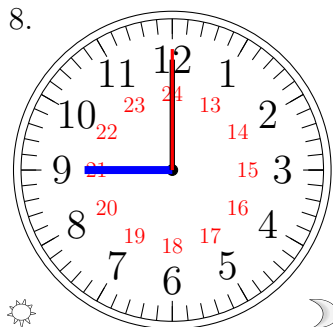
6.



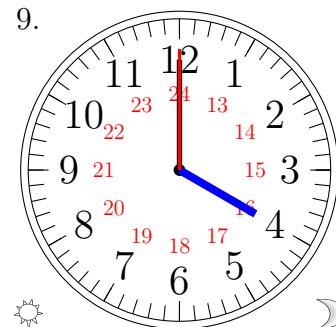
7.



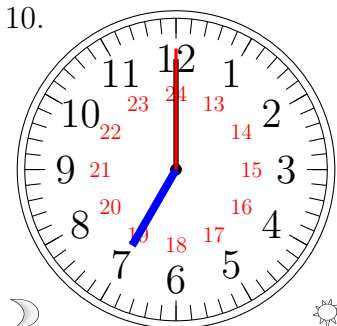
8.



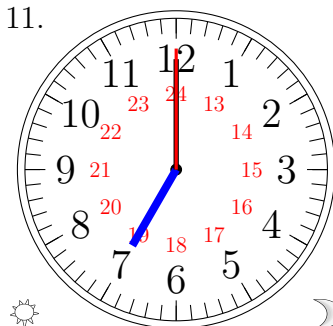
9.



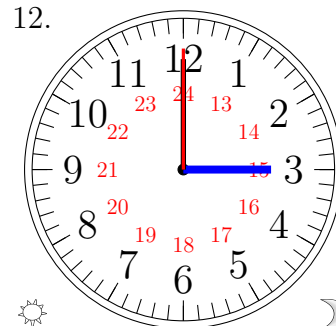
10.



11.



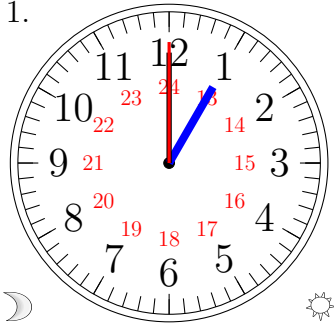
12.



Lecture d'une Horloge Analogique (G) Solutions

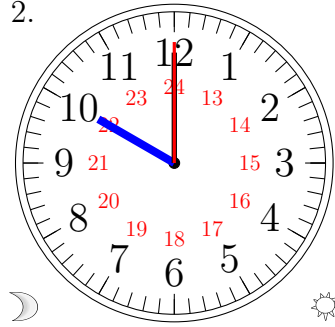
Lisez chaque heure et écrivez-la dans l'espace sous l'horloge.

1.



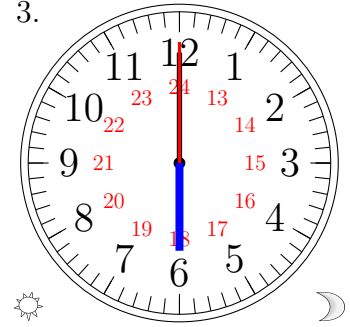
01:00:00

2.



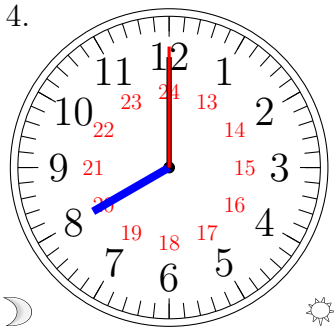
10:00:00

3.



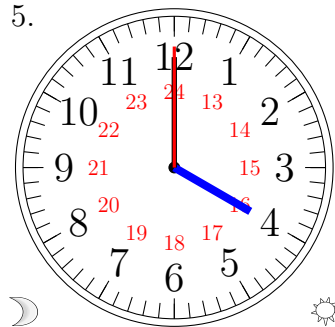
18:00:00

4.



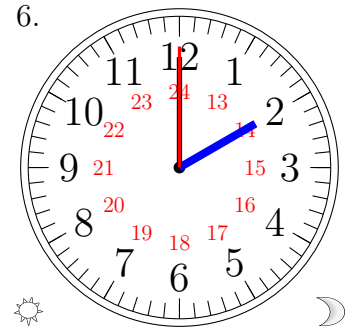
08:00:00

5.



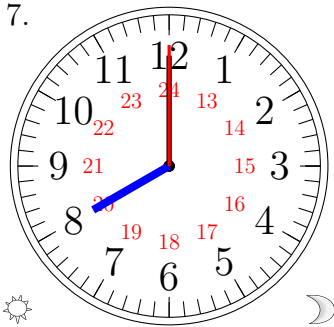
04:00:00

6.



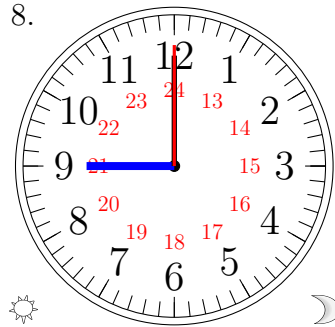
14:00:00

7.



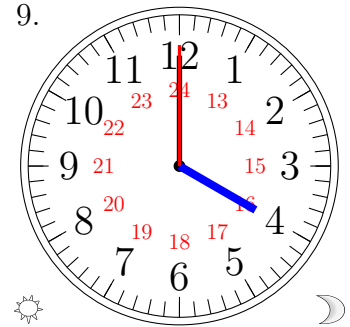
20:00:00

8.



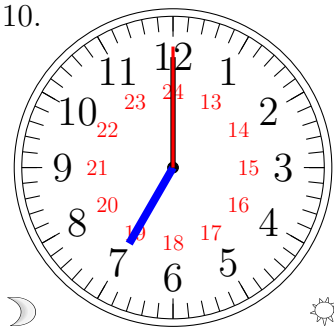
21:00:00

9.



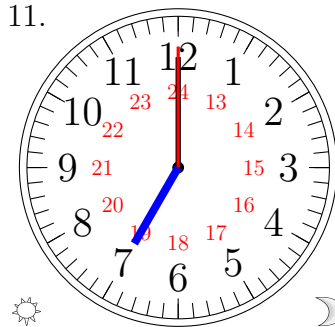
16:00:00

10.



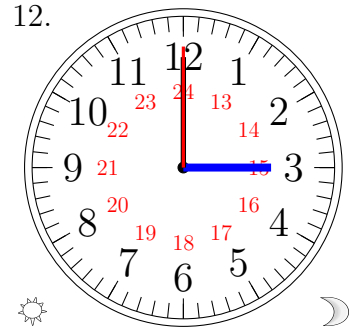
07:00:00

11.



19:00:00

12.

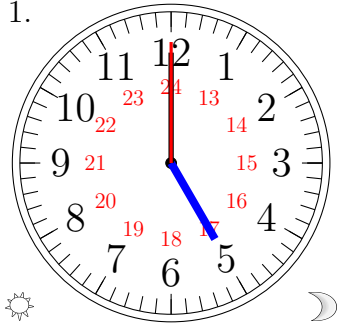


15:00:00

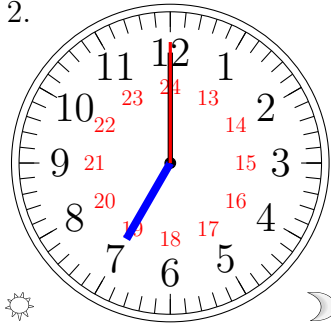
Lecture d'une Horloge Analogique (H)

Lisez chaque heure et écrivez-la dans l'espace sous l'horloge.

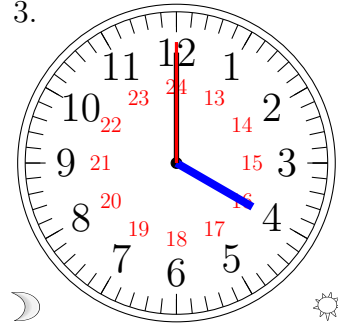
1.



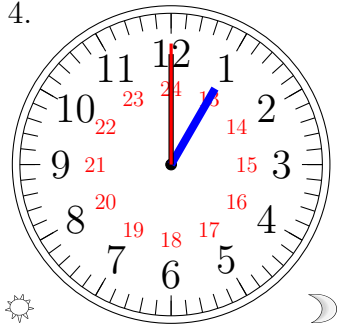
2.



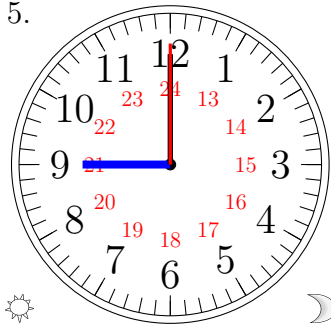
3.



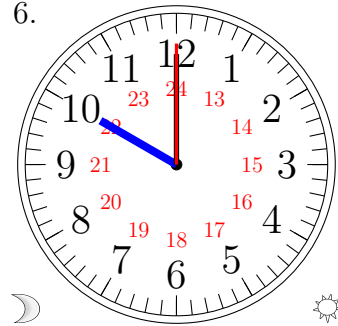
4.



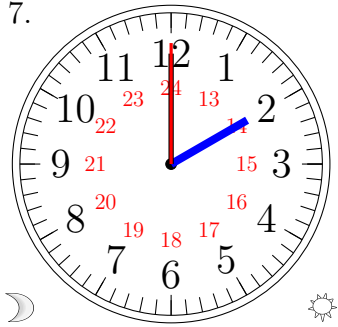
5.



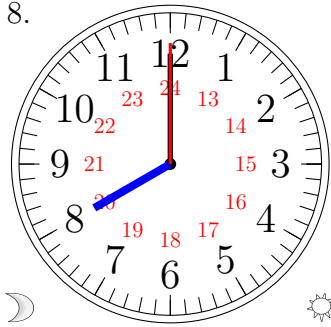
6.



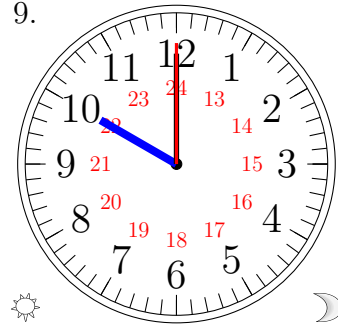
7.



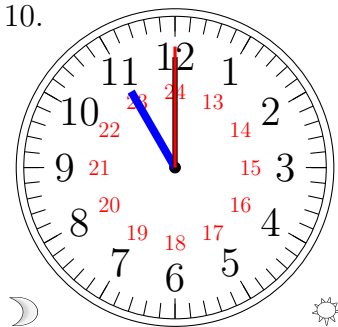
8.



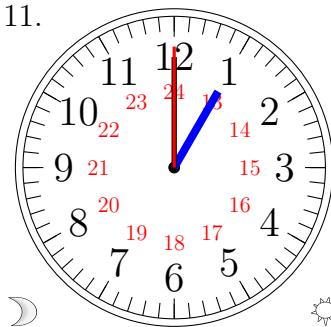
9.



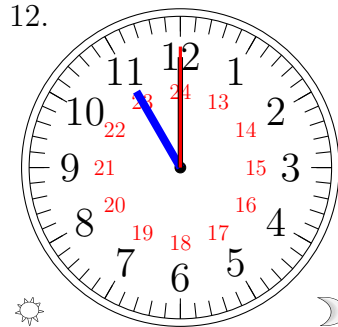
10.



11.



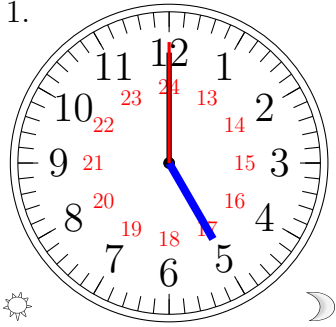
12.



Lecture d'une Horloge Analogique (H) Solutions

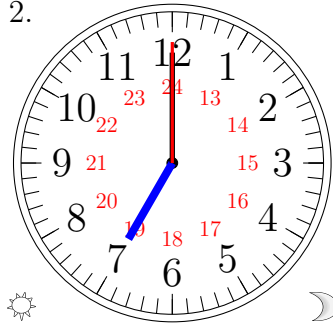
Lisez chaque heure et écrivez-la dans l'espace sous l'horloge.

1.



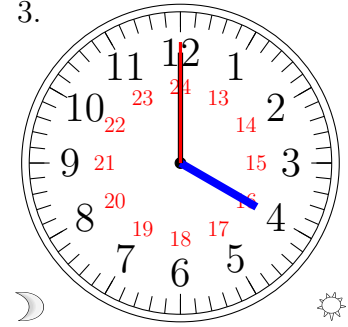
17:00:00

2.



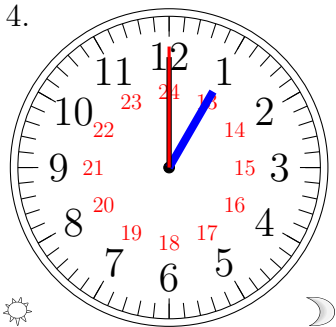
19:00:00

3.



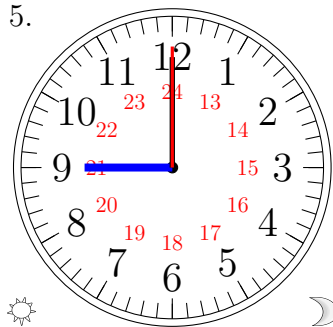
04:00:00

4.



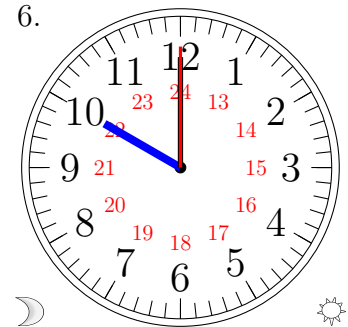
13:00:00

5.



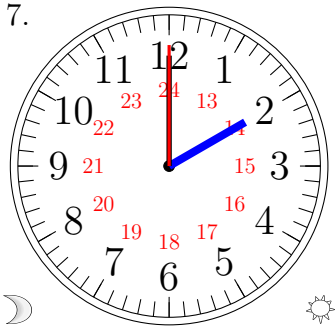
21:00:00

6.



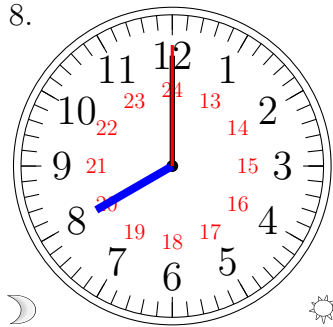
10:00:00

7.



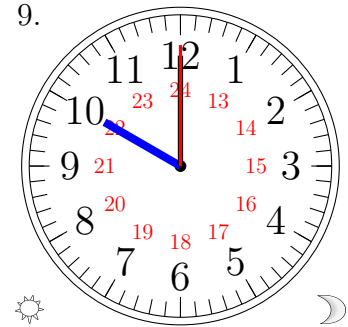
02:00:00

8.



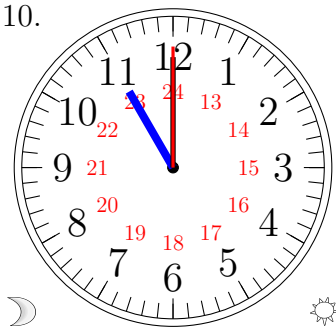
08:00:00

9.



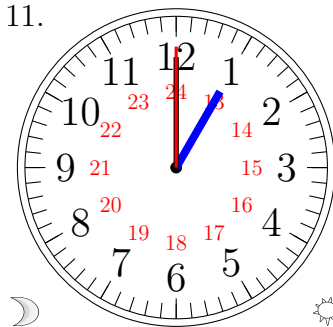
22:00:00

10.



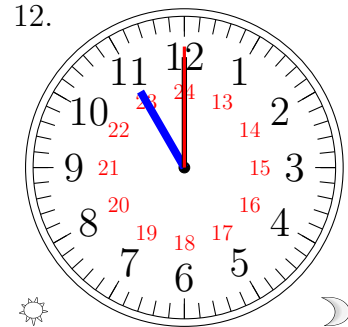
11:00:00

11.



01:00:00

12.

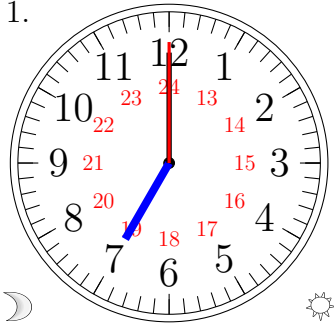


23:00:00

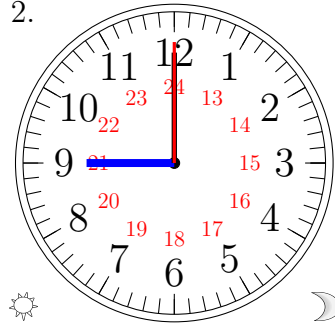
Lecture d'une Horloge Analogique (I)

Lisez chaque heure et écrivez-la dans l'espace sous l'horloge.

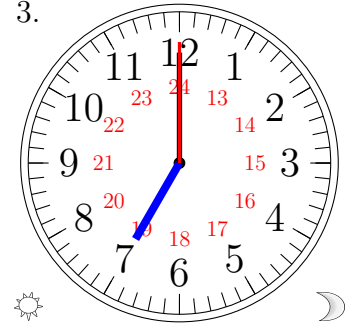
1.



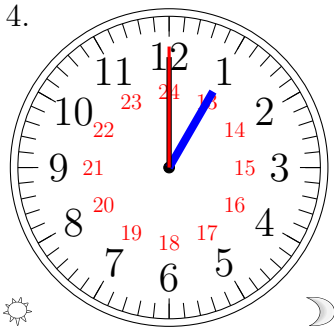
2.



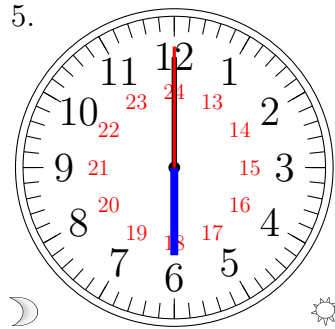
3.



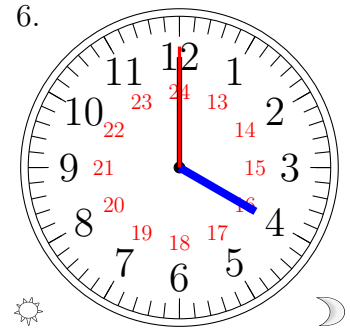
4.



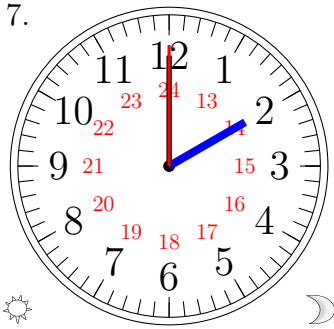
5.



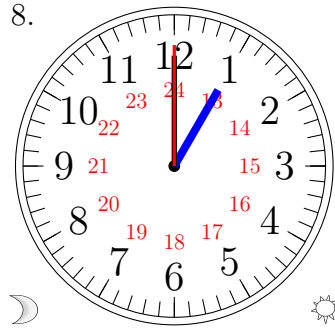
6.



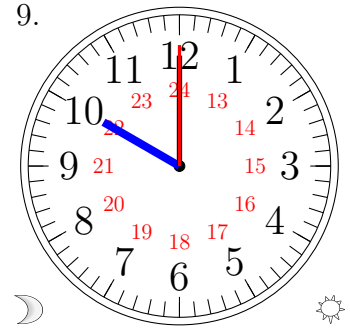
7.



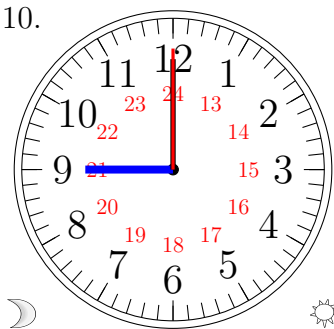
8.



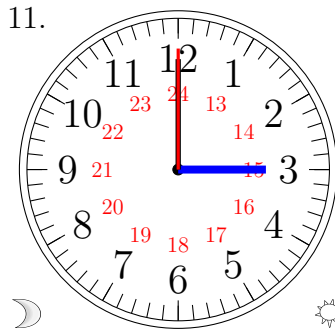
9.



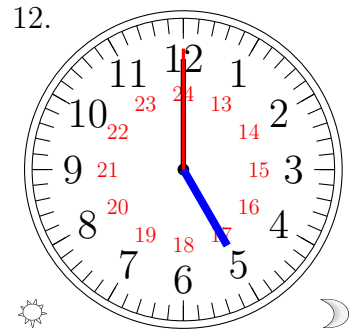
10.



11.



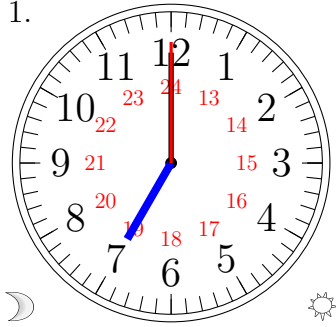
12.



Lecture d'une Horloge Analogique (I) Solutions

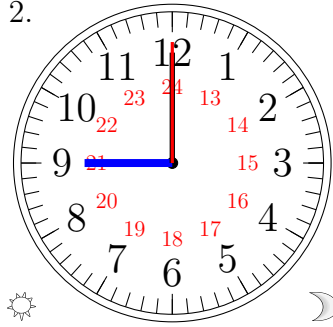
Lisez chaque heure et écrivez-la dans l'espace sous l'horloge.

1.



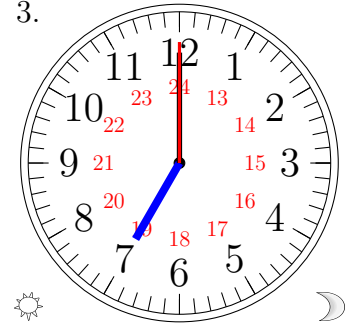
07:00:00

2.



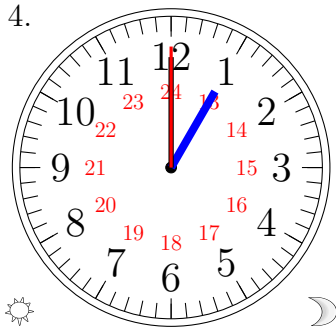
21:00:00

3.



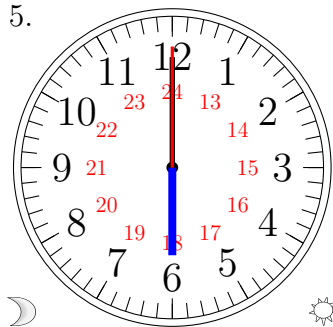
19:00:00

4.



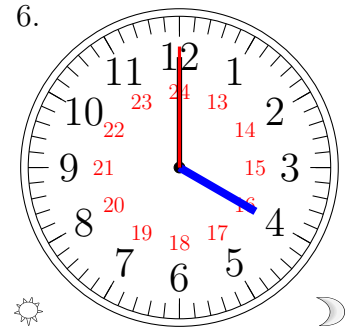
13:00:00

5.



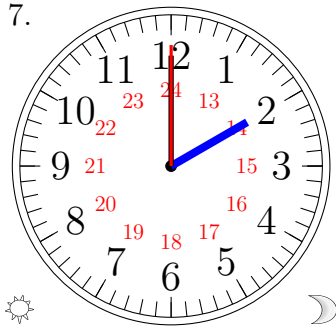
06:00:00

6.



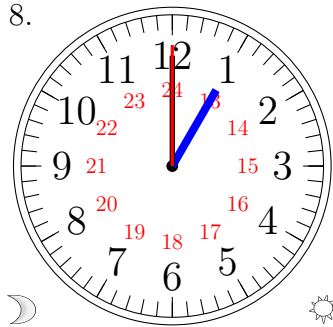
16:00:00

7.



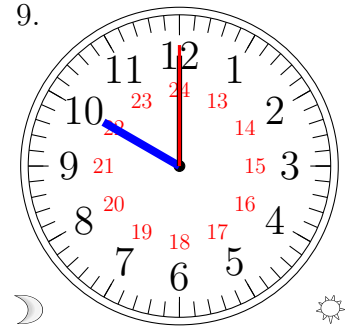
14:00:00

8.



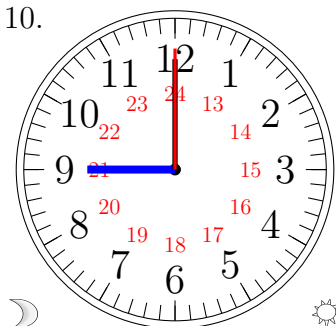
01:00:00

9.



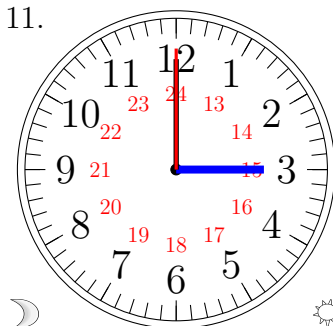
10:00:00

10.



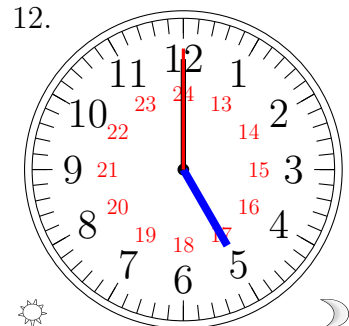
09:00:00

11.



03:00:00

12.

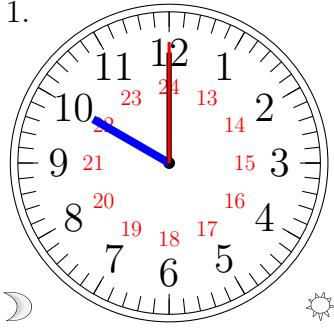


17:00:00

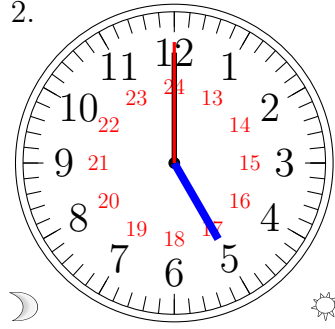
Lecture d'une Horloge Analogique (J)

Lisez chaque heure et écrivez-la dans l'espace sous l'horloge.

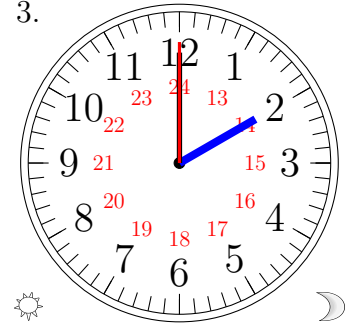
1.



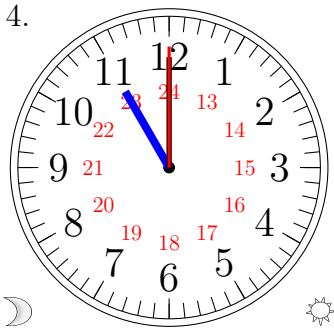
2.



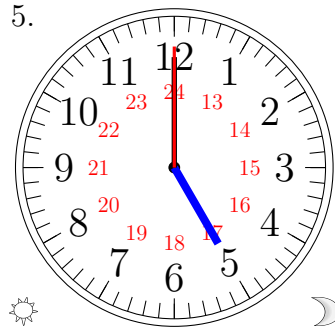
3.



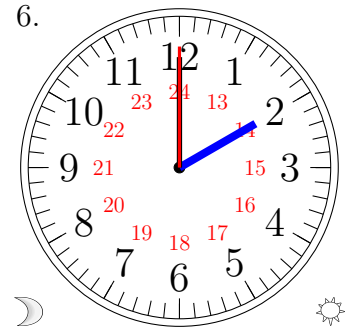
4.



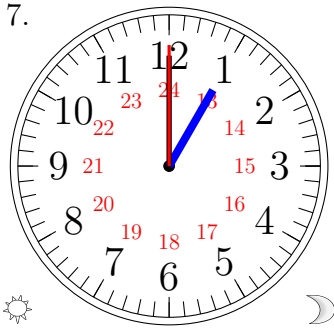
5.



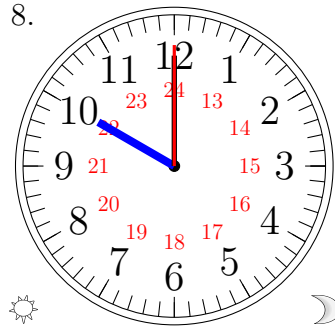
6.



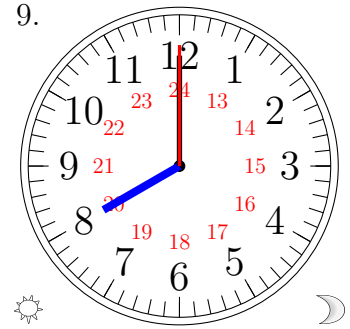
7.



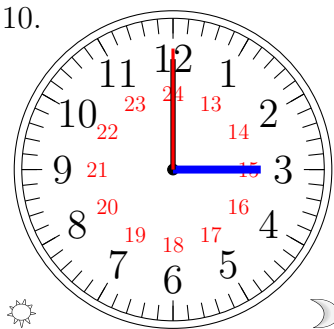
8.



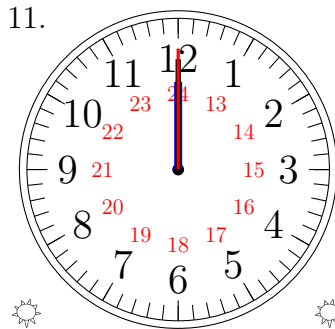
9.



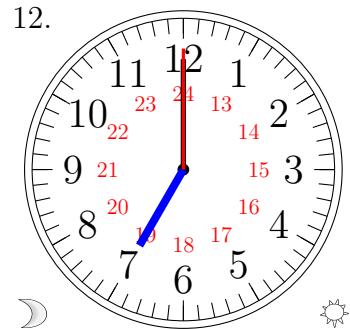
10.



11.



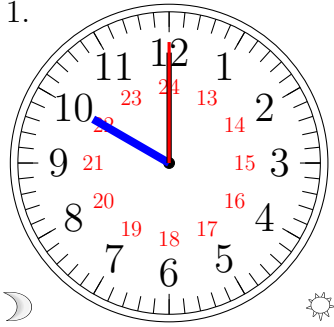
12.



Lecture d'une Horloge Analogique (J) Solutions

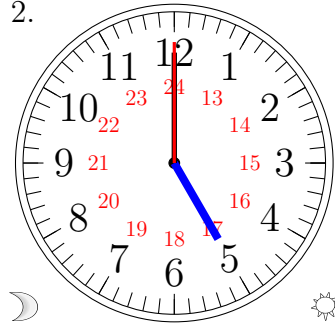
Lisez chaque heure et écrivez-la dans l'espace sous l'horloge.

1.



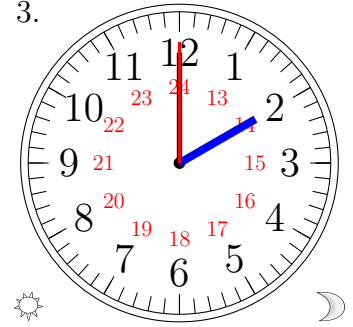
10:00:00

2.



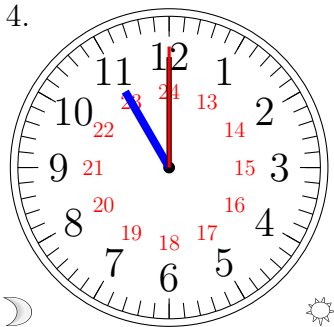
05:00:00

3.



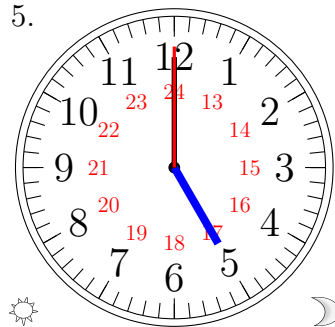
14:00:00

4.



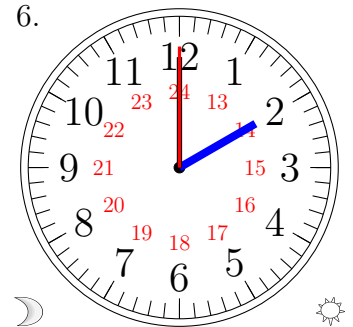
11:00:00

5.



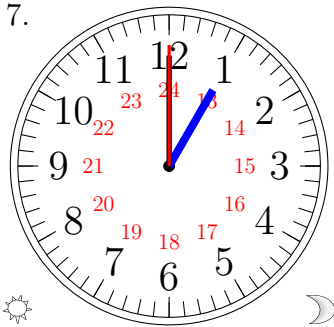
17:00:00

6.



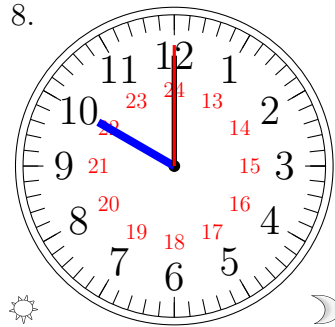
02:00:00

7.



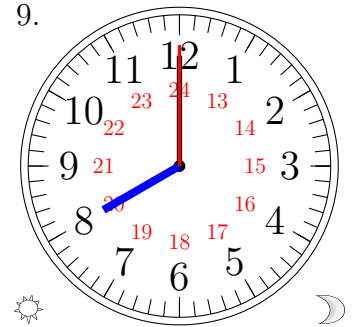
13:00:00

8.



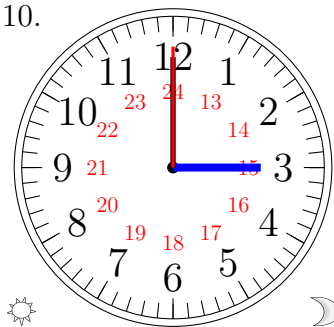
22:00:00

9.



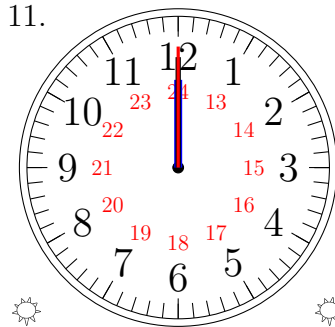
20:00:00

10.



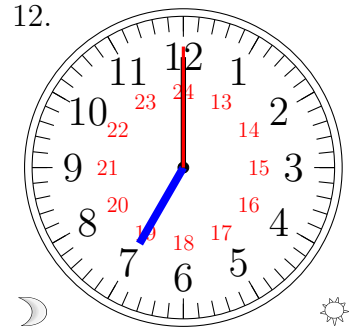
15:00:00

11.



12:00:00

12.



07:00:00