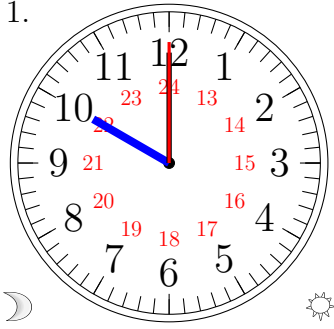


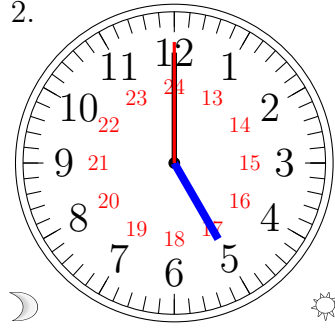
Lecture d'une Horloge Analogique (J)

Lisez chaque heure et écrivez-la dans l'espace sous l'horloge.

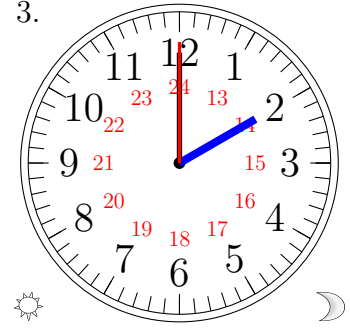
1.



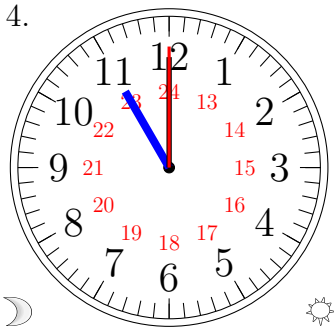
2.



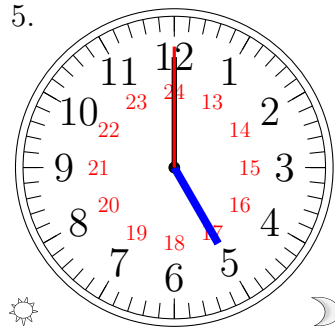
3.



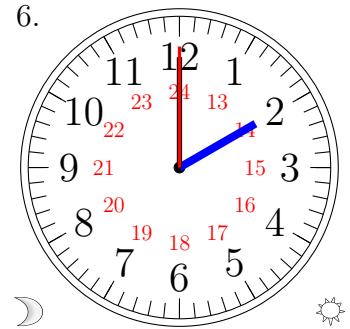
4.



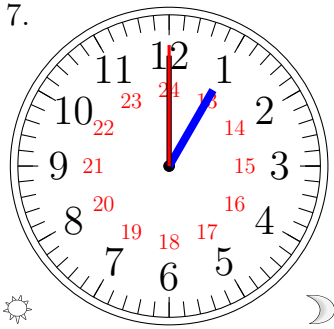
5.



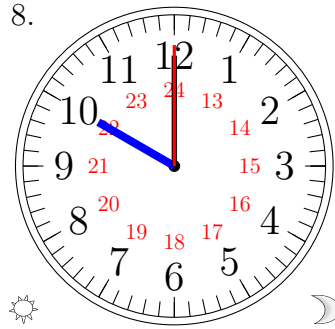
6.



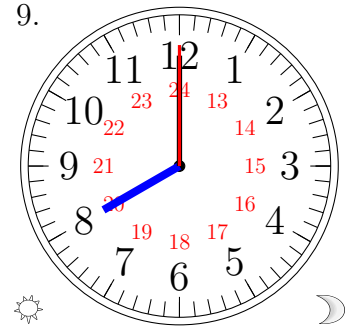
7.



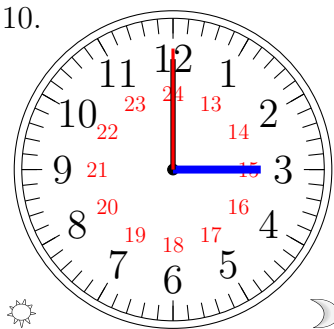
8.



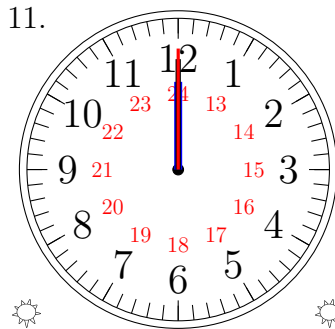
9.



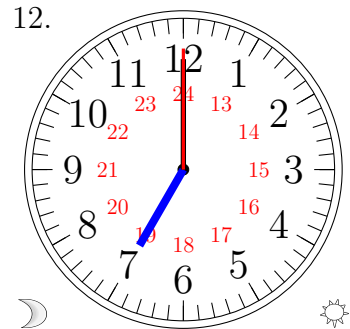
10.



11.



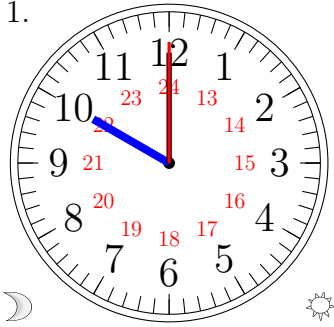
12.



Lecture d'une Horloge Analogique (J) Solutions

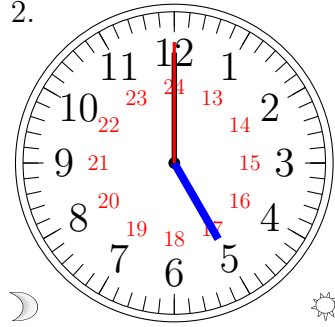
Lisez chaque heure et écrivez-la dans l'espace sous l'horloge.

1.



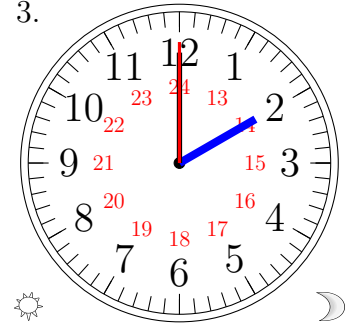
10:00:00

2.



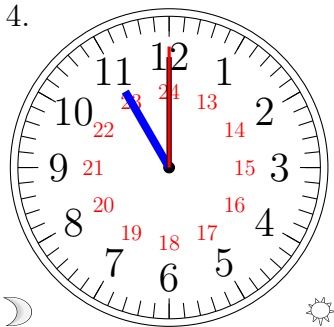
05:00:00

3.



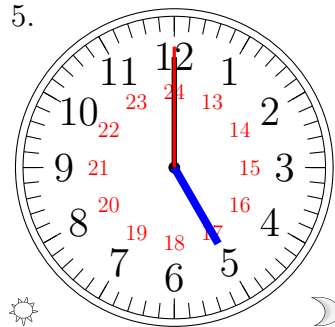
14:00:00

4.



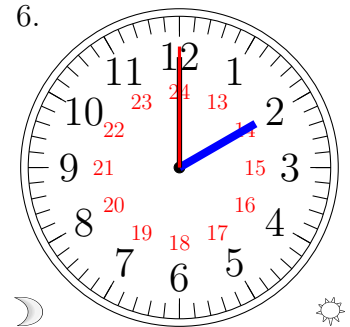
11:00:00

5.



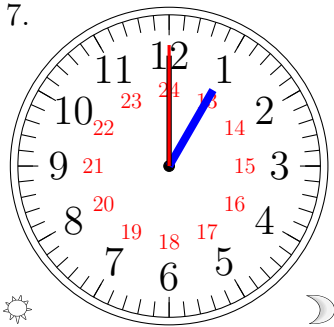
17:00:00

6.



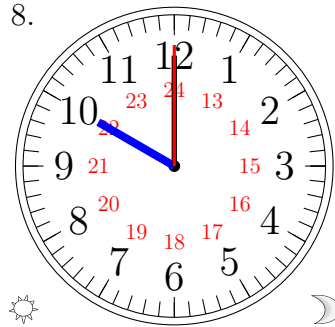
02:00:00

7.



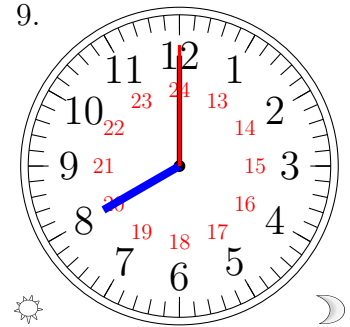
13:00:00

8.



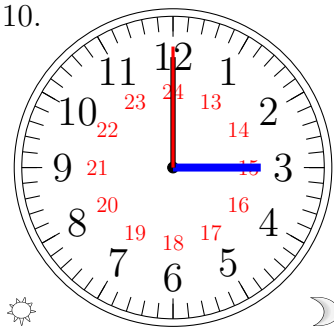
22:00:00

9.



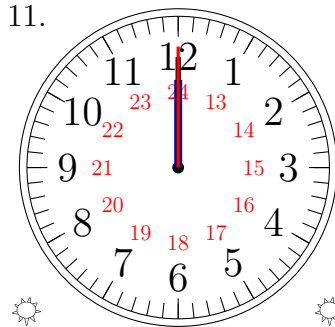
20:00:00

10.



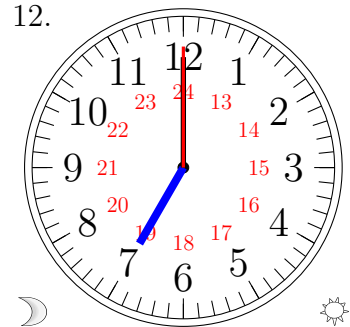
15:00:00

11.



12:00:00

12.



07:00:00