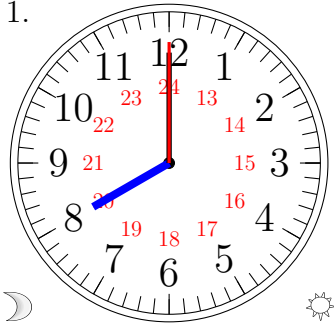


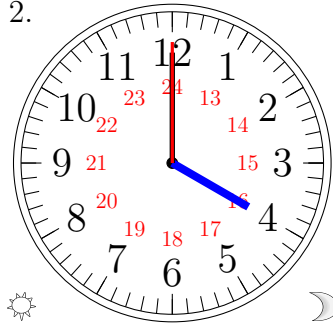
Lecture d'une Horloge Analogique (D)

Lisez chaque heure et écrivez-la dans l'espace sous l'horloge.

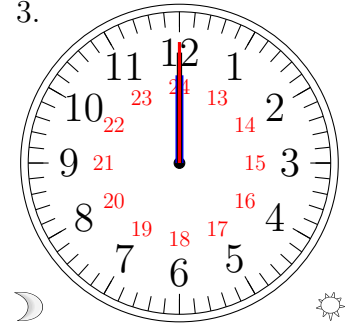
1.



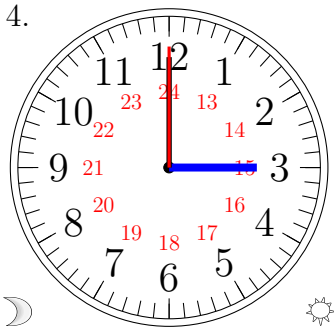
2.



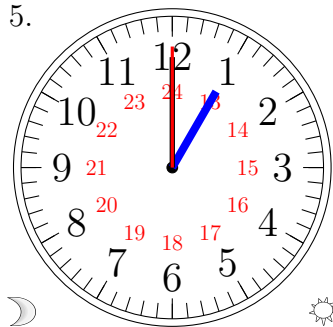
3.



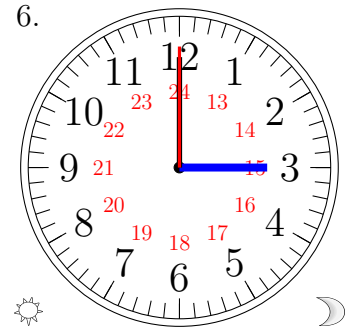
4.



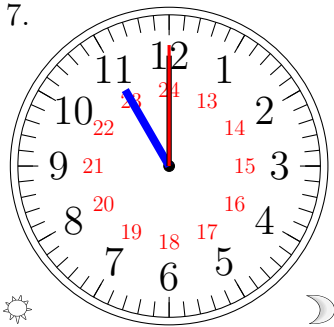
5.



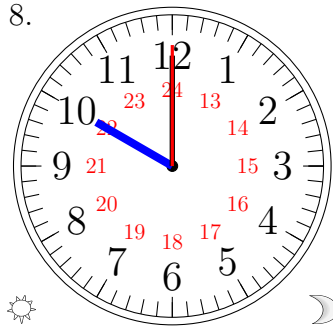
6.



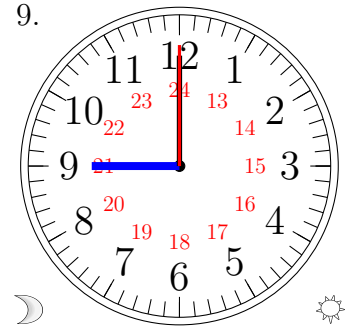
7.



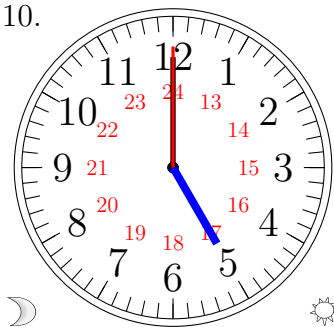
8.



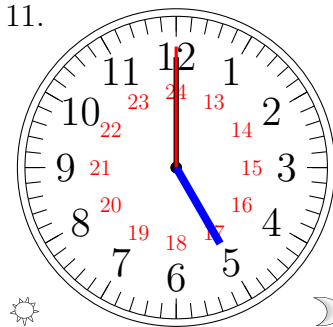
9.



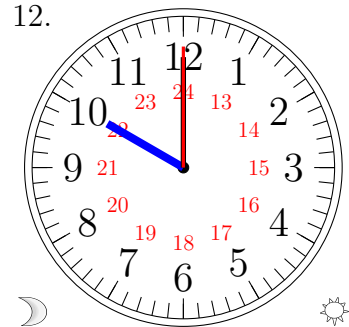
10.



11.

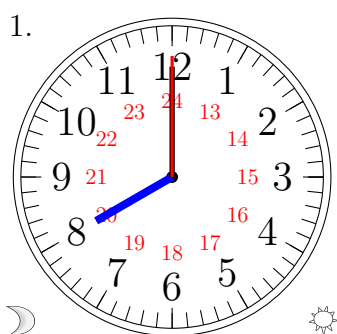


12.

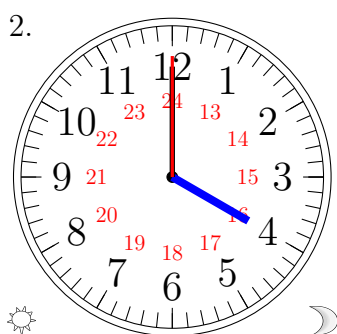


Lecture d'une Horloge Analogique (D) Solutions

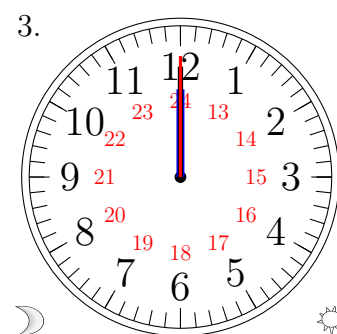
Lisez chaque heure et écrivez-la dans l'espace sous l'horloge.



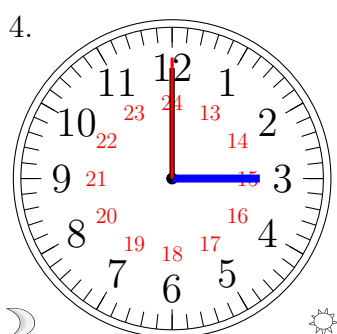
08:00:00



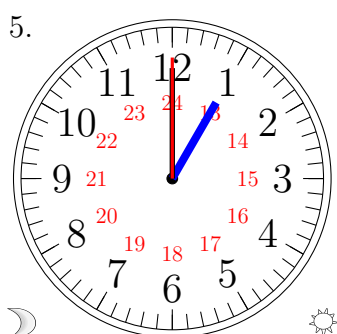
16:00:00



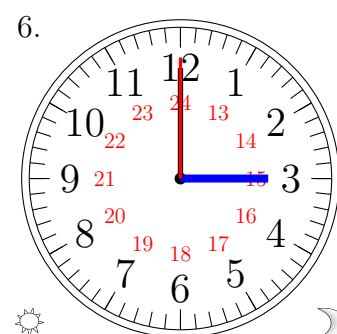
00:00:00



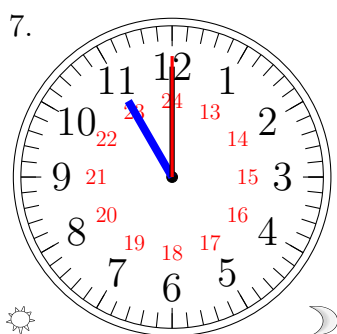
03:00:00



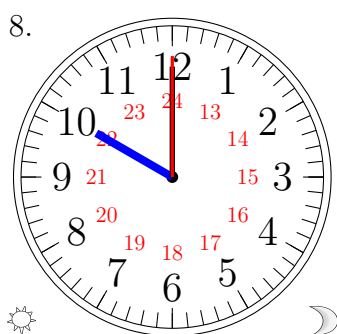
01:00:00



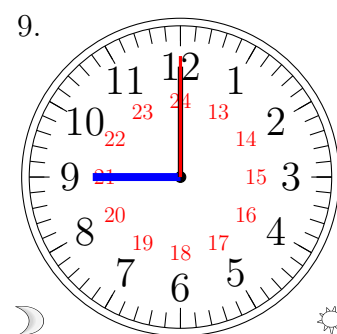
15:00:00



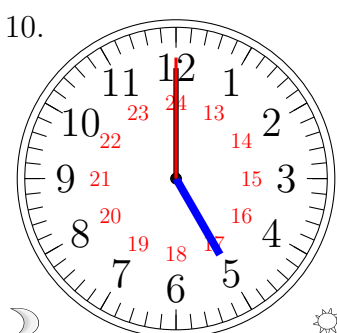
23:00:00



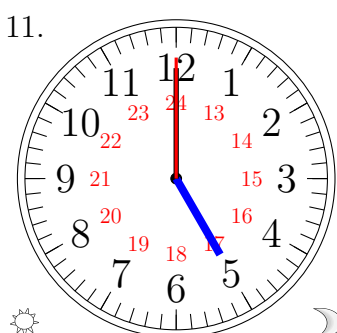
22:00:00



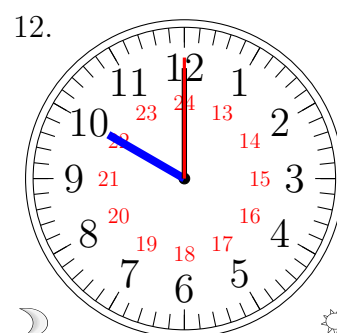
09:00:00



05:00:00



17:00:00



10:00:00