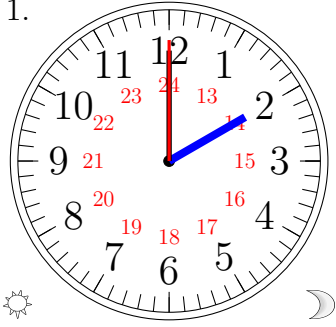


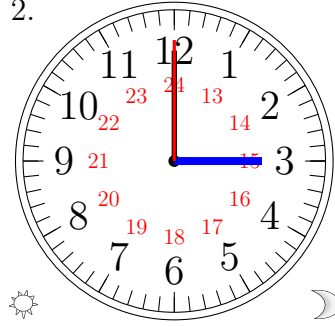
Lecture d'une Horloge Analogique (B)

Lisez chaque heure et écrivez-la dans l'espace sous l'horloge.

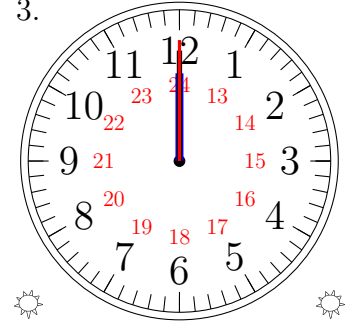
1.



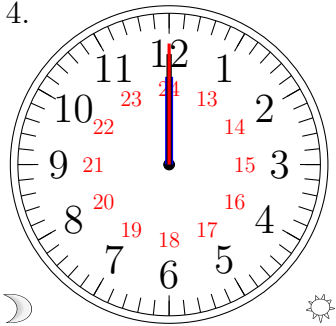
2.



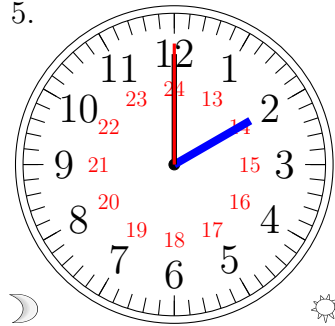
3.



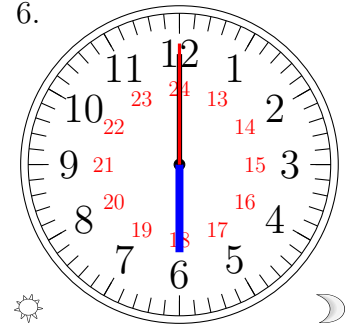
4.



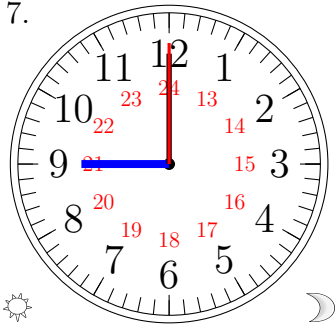
5.



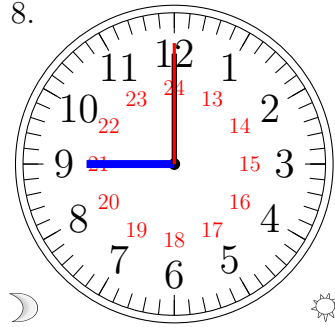
6.



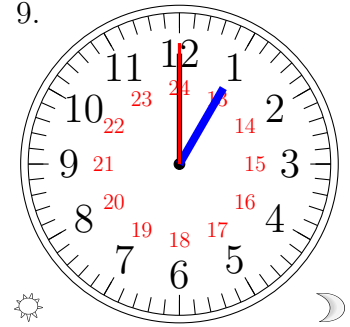
7.



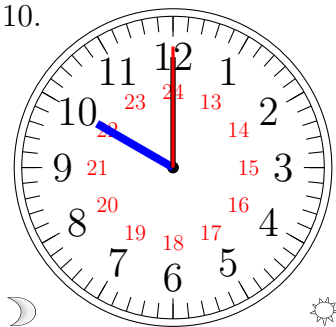
8.



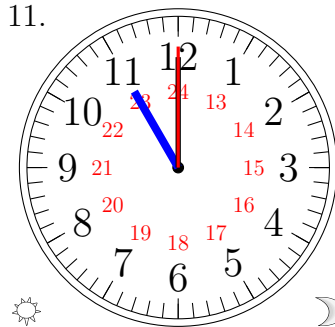
9.



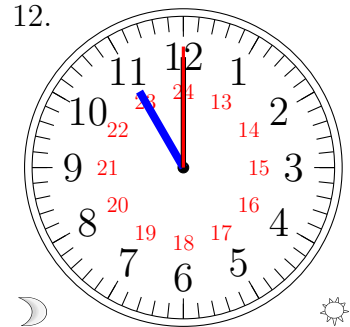
10.



11.



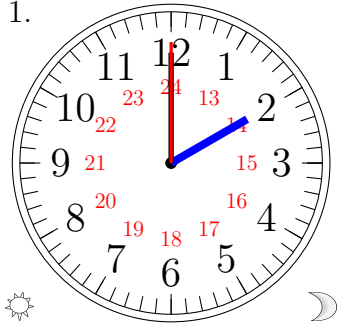
12.



Lecture d'une Horloge Analogique (B) Solutions

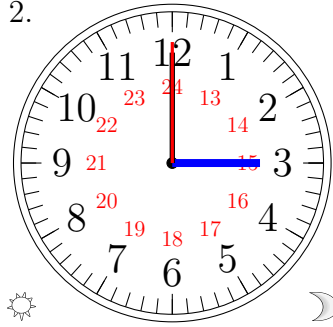
Lisez chaque heure et écrivez-la dans l'espace sous l'horloge.

1.



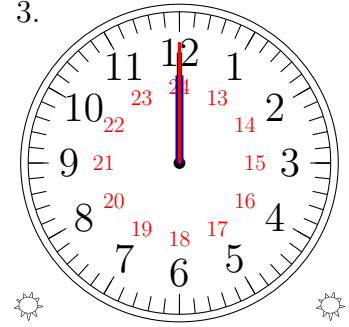
14:00:00

2.



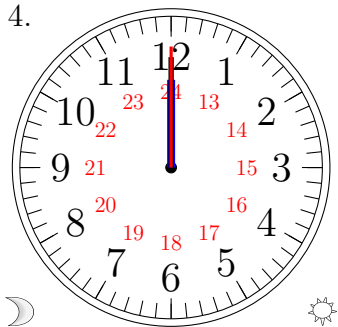
15:00:00

3.



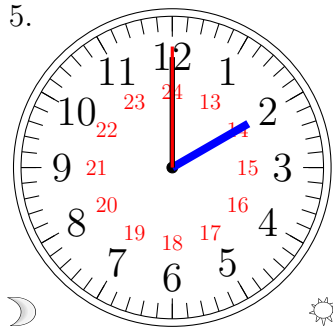
12:00:00

4.



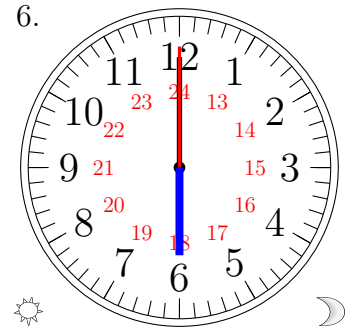
00:00:00

5.



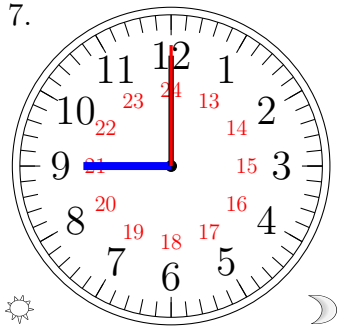
02:00:00

6.



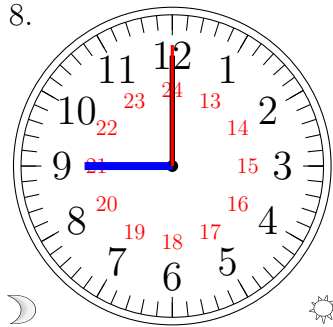
18:00:00

7.



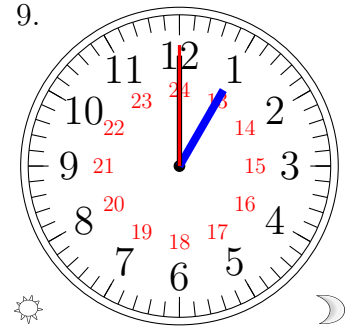
21:00:00

8.



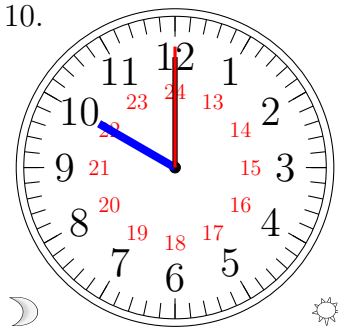
09:00:00

9.



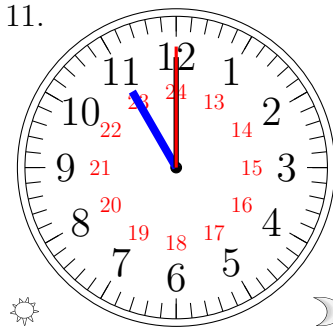
13:00:00

10.



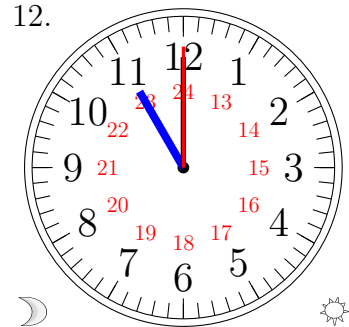
10:00:00

11.



23:00:00

12.



11:00:00