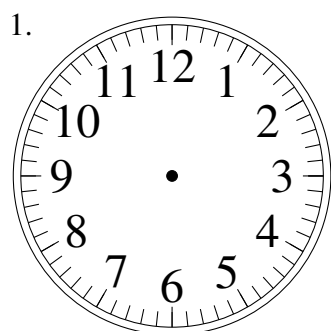
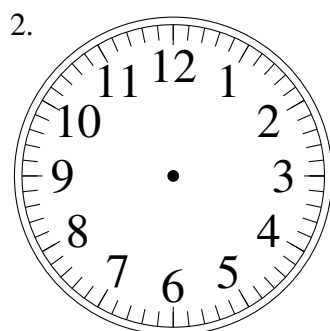


Dessin d'Aiguilles d'une Horloge Analogique (J)

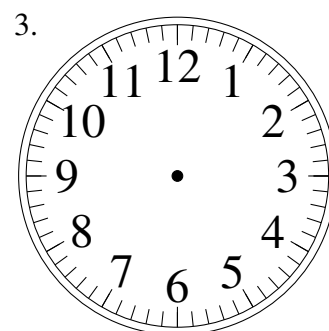
Dessinez les aiguilles des horloges.



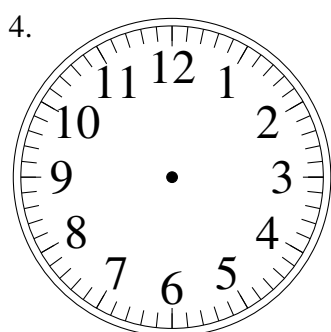
7:01:00



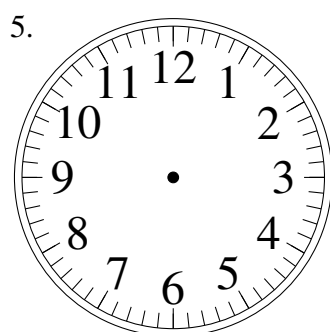
9:13:00



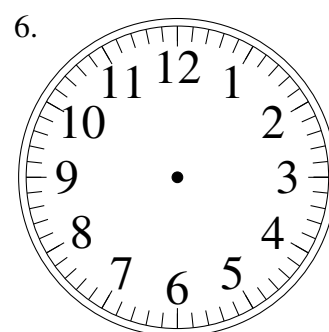
9:46:00



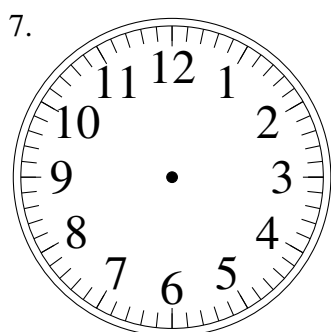
12:57:00



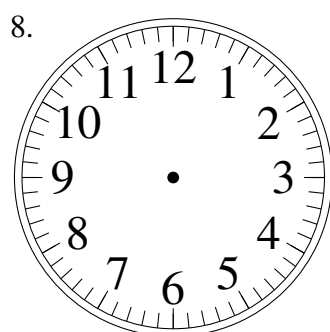
2:20:00



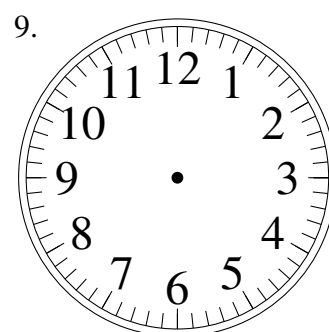
9:16:00



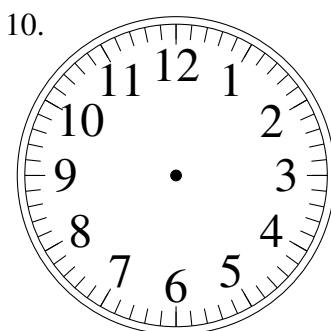
10:48:00



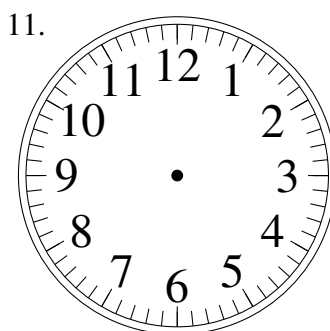
11:53:00



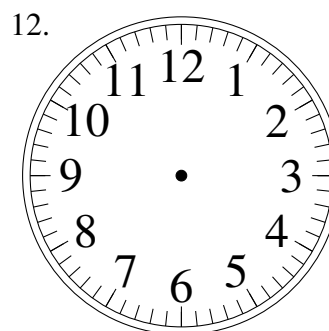
4:24:00



1:28:00



7:21:00

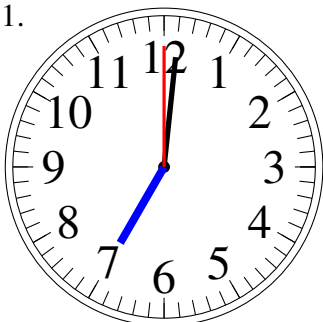


7:29:00

Dessin d'Aiguilles d'une Horloge Analogique (J) Solutions

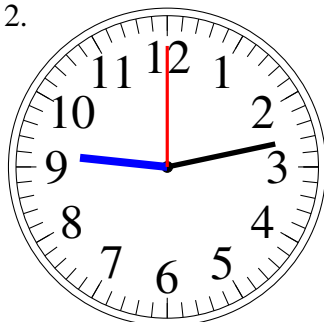
Dessinez les aiguilles des horloges.

1.



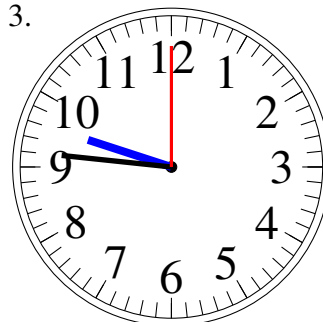
7:01:00

2.



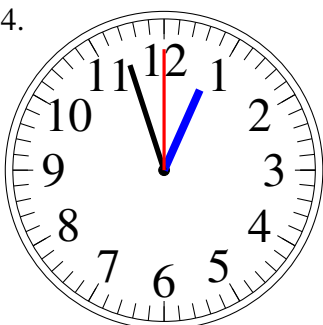
9:13:00

3.



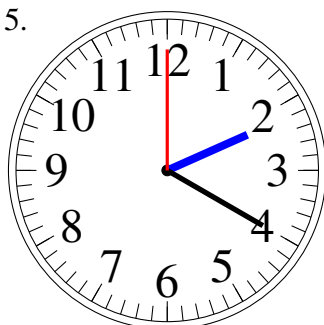
9:46:00

4.



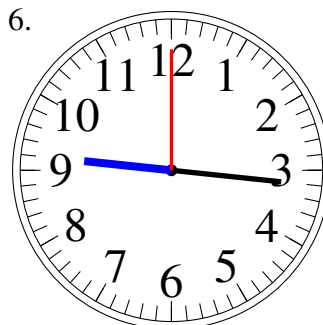
12:57:00

5.



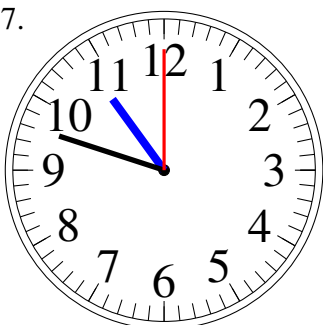
2:20:00

6.



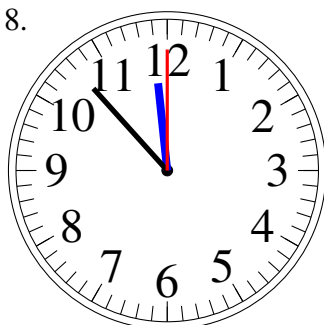
9:16:00

7.



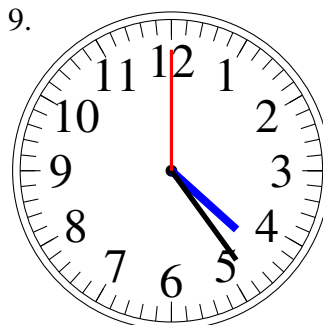
10:48:00

8.



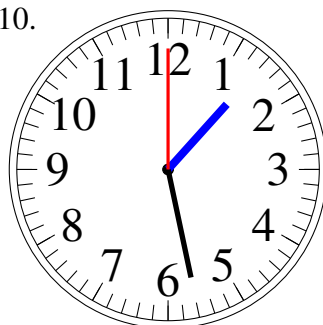
11:53:00

9.



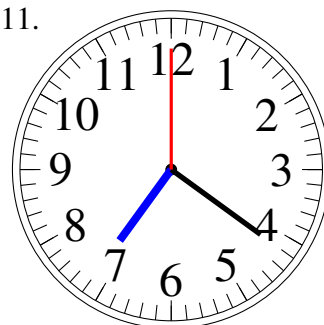
4:24:00

10.



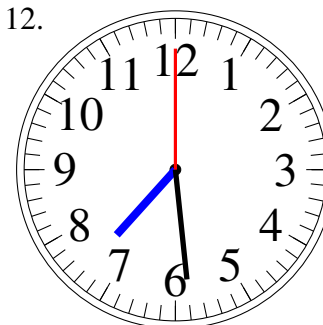
1:28:00

11.



7:21:00

12.



7:29:00