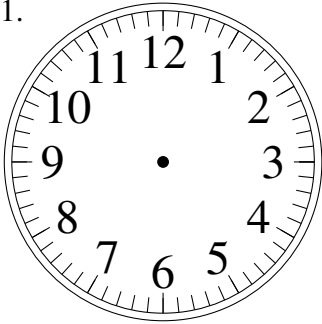


Dessin d'Aiguilles d'une Horloge Analogique (E)

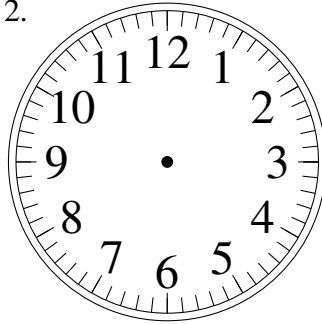
Dessinez les aiguilles des horloges.

1.



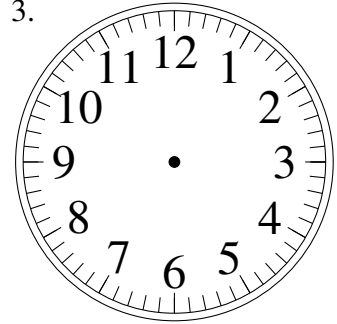
6:03:00

2.



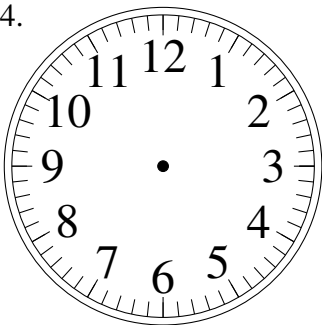
5:02:00

3.



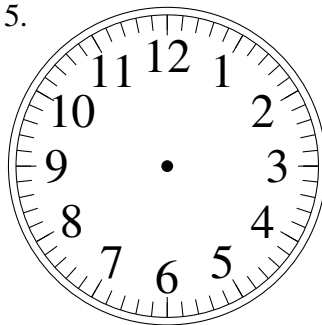
7:59:00

4.



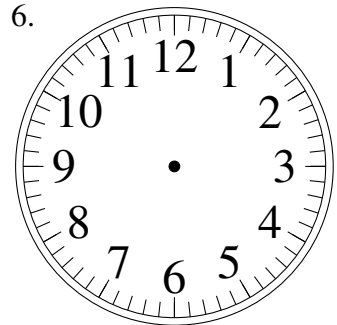
2:25:00

5.



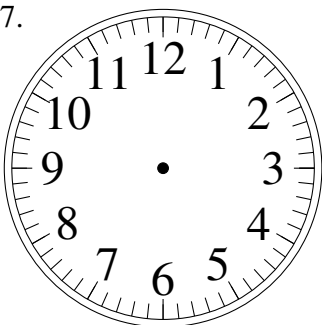
3:52:00

6.



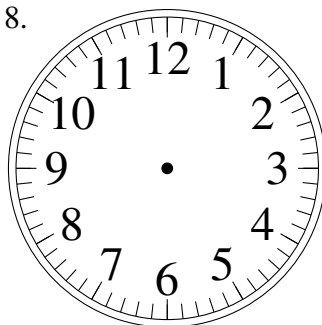
5:00:00

7.



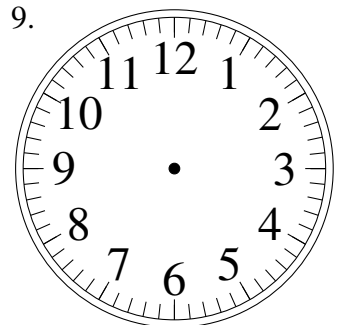
12:35:00

8.



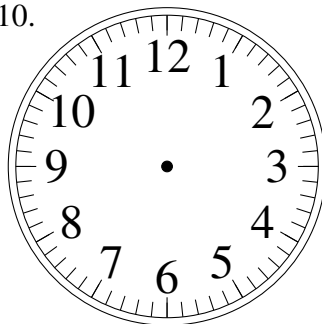
3:34:00

9.



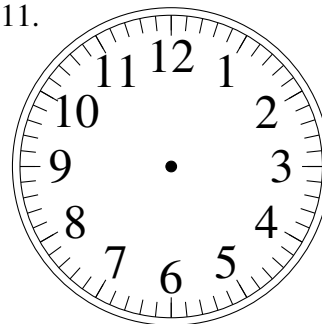
6:40:00

10.



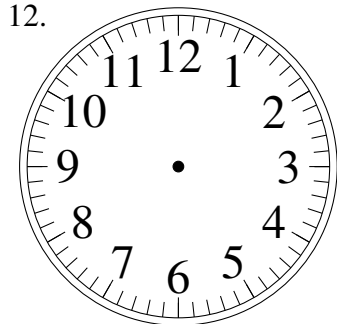
12:04:00

11.



11:20:00

12.

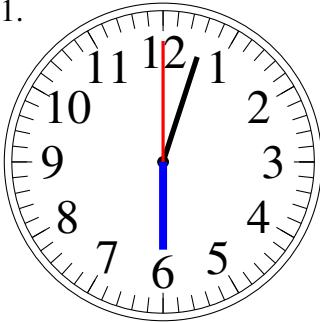


1:36:00

Dessin d'Aiguilles d'une Horloge Analogique (E) Solutions

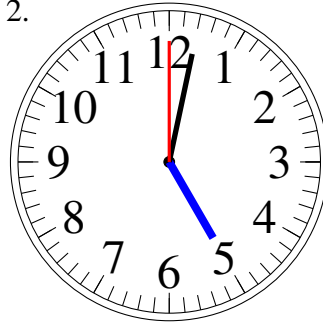
Dessinez les aiguilles des horloges.

1.



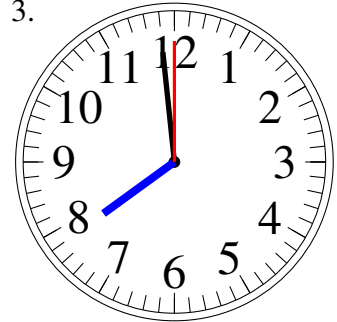
6:03:00

2.



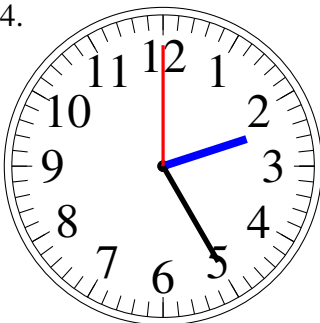
5:02:00

3.



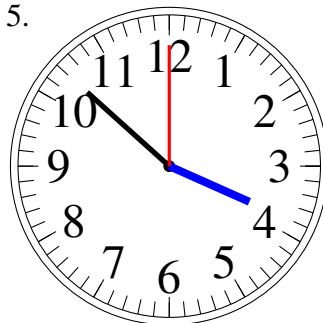
7:59:00

4.



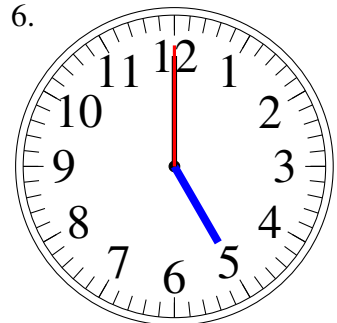
2:25:00

5.



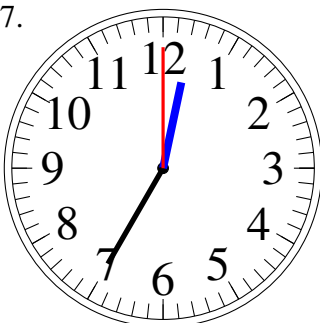
3:52:00

6.



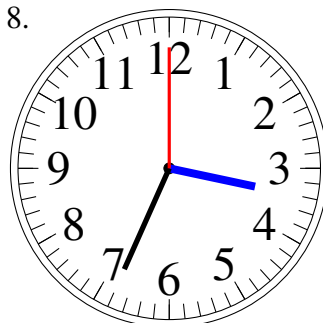
5:00:00

7.



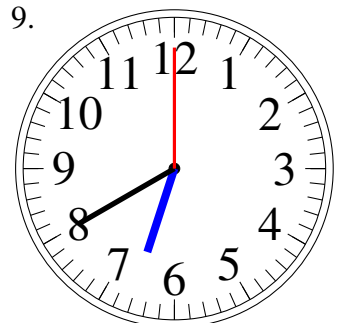
12:35:00

8.



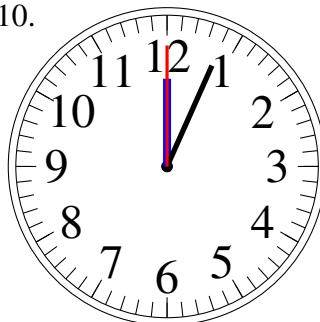
3:34:00

9.



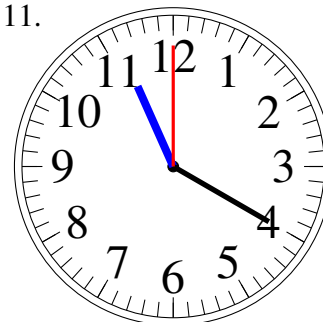
6:40:00

10.



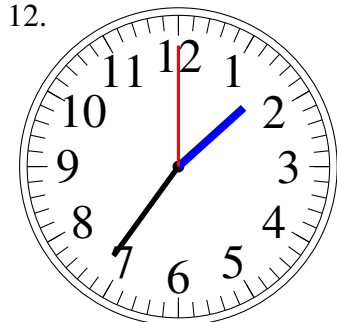
12:04:00

11.



11:20:00

12.



1:36:00