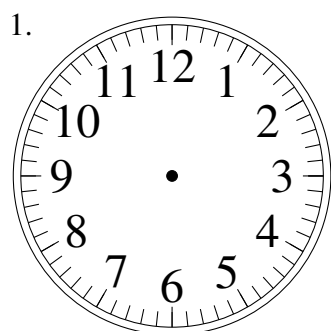
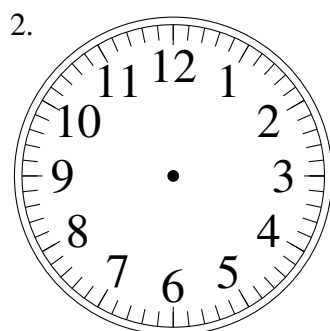


Dessin d'Aiguilles d'une Horloge Analogique (C)

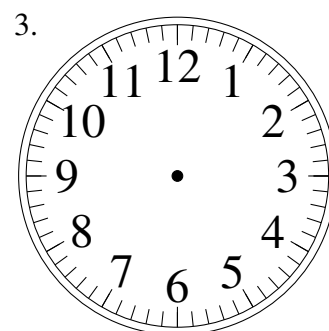
Dessinez les aiguilles des horloges.



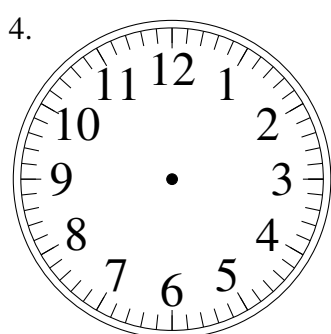
2:24:00



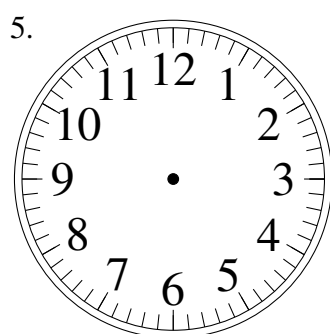
5:08:00



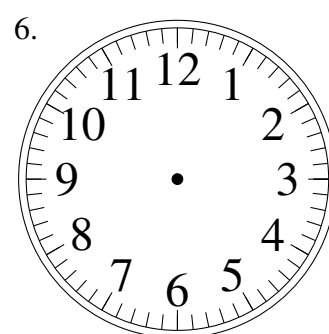
6:51:00



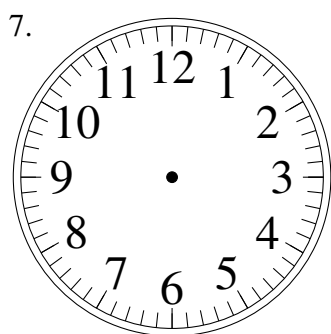
2:04:00



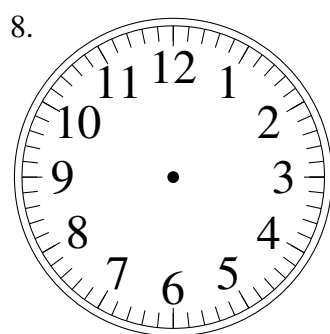
1:38:00



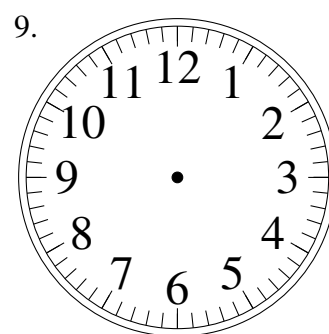
8:40:00



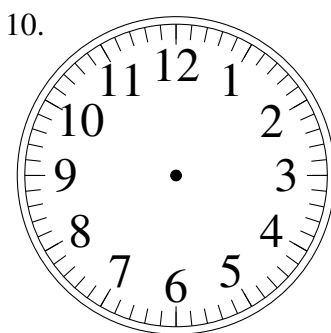
1:36:00



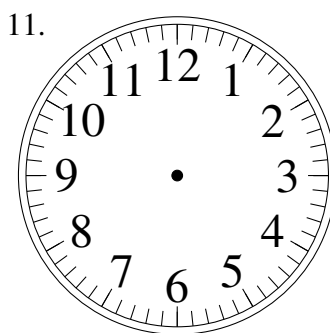
9:25:00



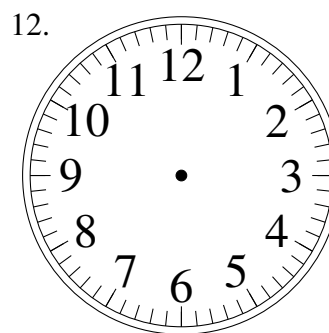
11:46:00



12:48:00



4:30:00

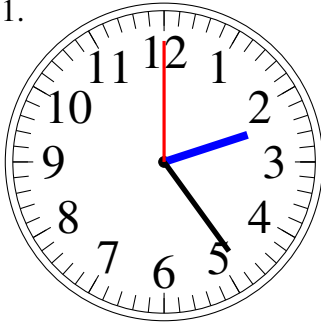


3:07:00

Dessin d'Aiguilles d'une Horloge Analogique (C) Solutions

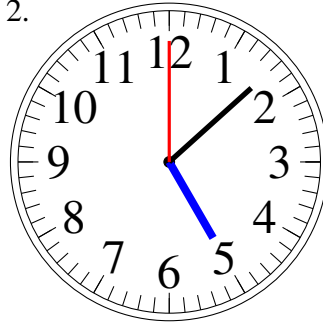
Dessinez les aiguilles des horloges.

1.



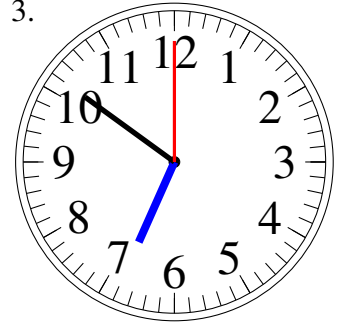
2:24:00

2.



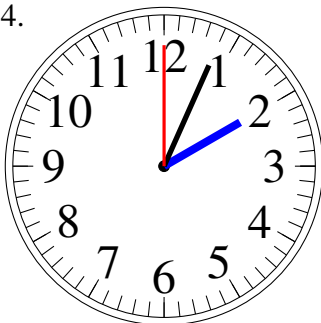
5:08:00

3.



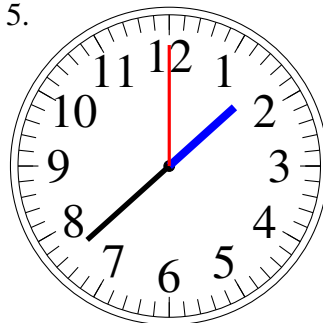
6:51:00

4.



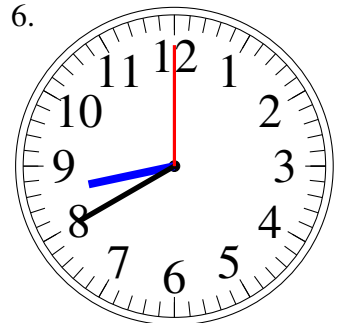
2:04:00

5.



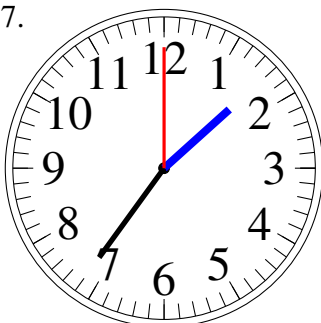
1:38:00

6.



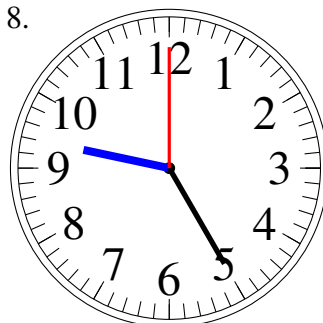
8:40:00

7.



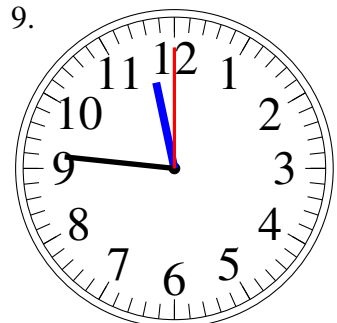
1:36:00

8.



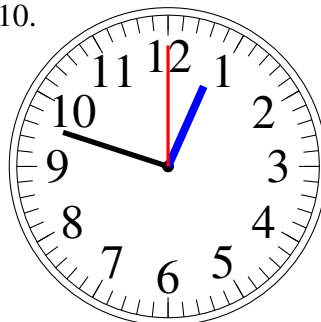
9:25:00

9.



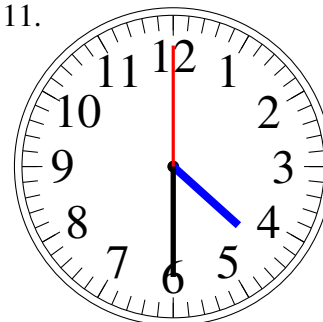
11:46:00

10.



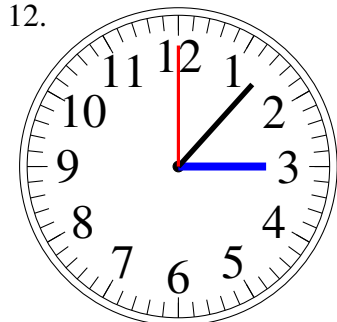
12:48:00

11.



4:30:00

12.



3:07:00