

# Dessin d'Aiguilles d'une Horloge Analogique (A)

Dessinez les aiguilles des horloges.

1.



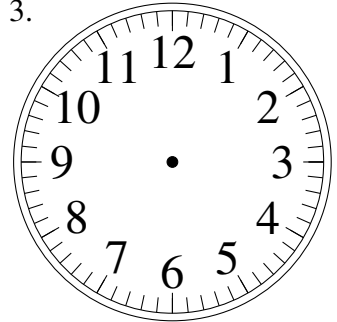
3:16:00

2.



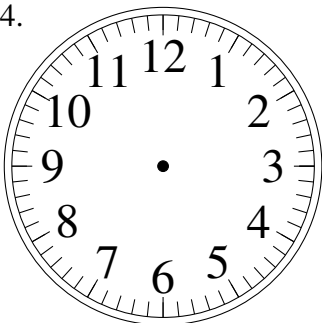
8:36:00

3.



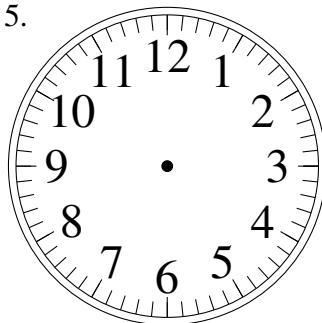
7:40:00

4.



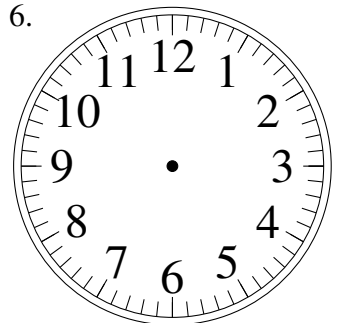
3:48:00

5.



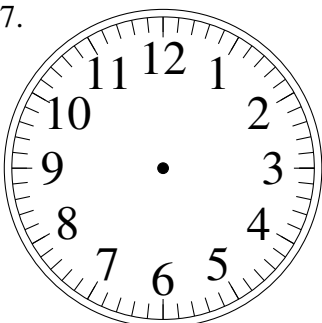
8:34:00

6.



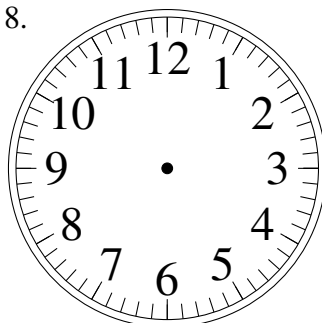
10:31:00

7.



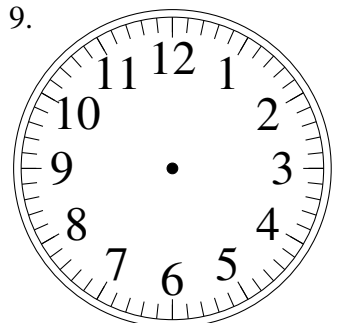
12:06:00

8.



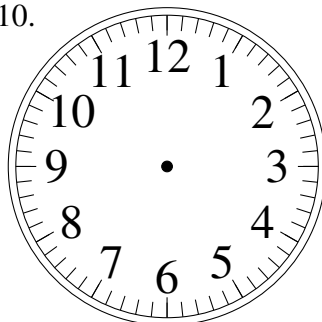
7:54:00

9.



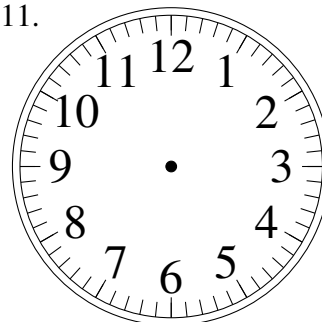
5:43:00

10.



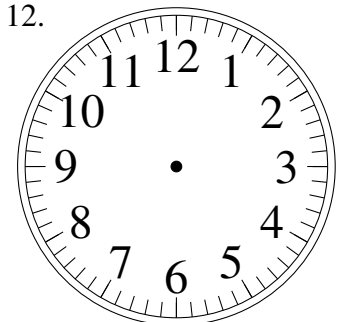
5:38:00

11.



9:15:00

12.

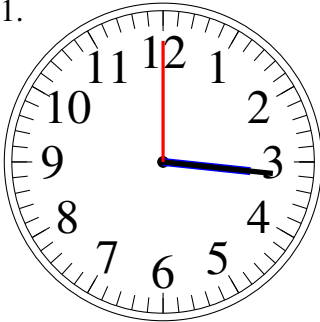


7:24:00

# Dessin d'Aiguilles d'une Horloge Analogique (A) Solutions

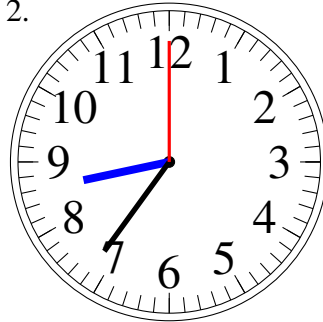
Dessinez les aiguilles des horloges.

1.



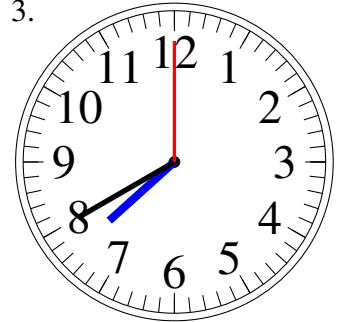
3:16:00

2.



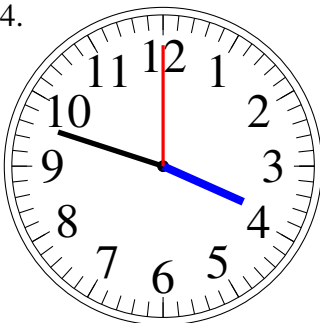
8:36:00

3.



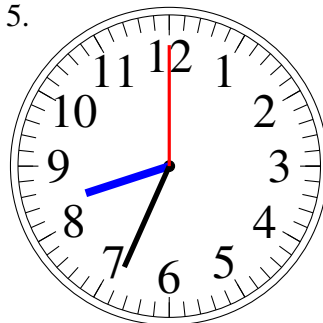
7:40:00

4.



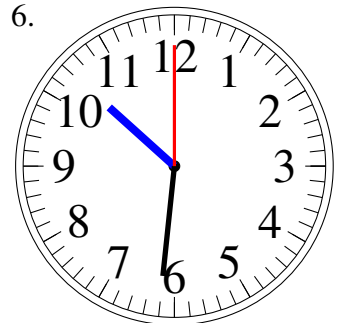
3:48:00

5.



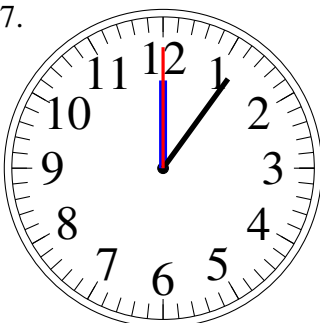
8:34:00

6.



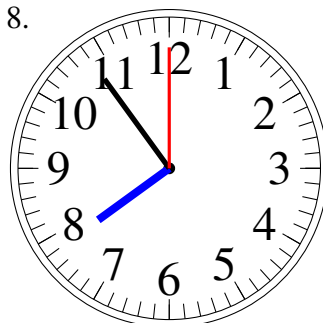
10:31:00

7.



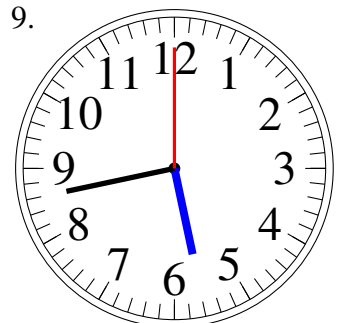
12:06:00

8.



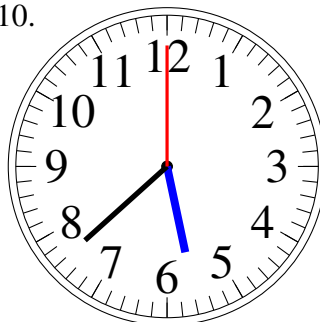
7:54:00

9.



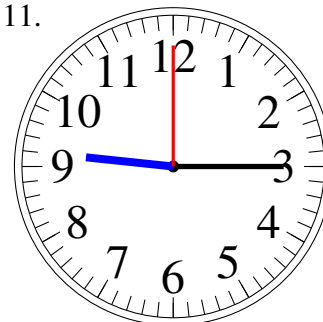
5:43:00

10.



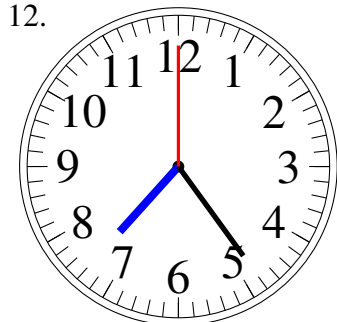
5:38:00

11.



9:15:00

12.



7:24:00