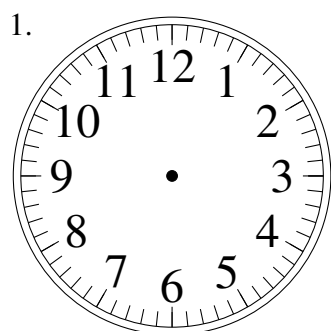
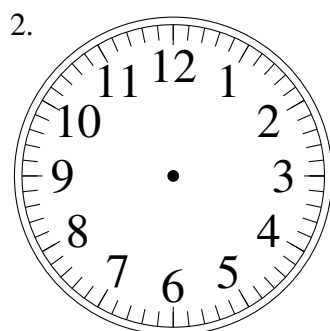


# Dessin d'Aiguilles d'une Horloge Analogique (G)

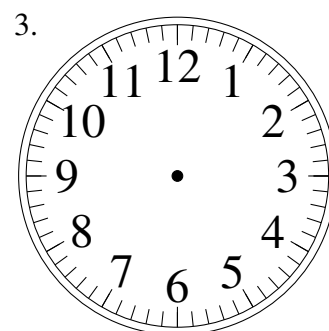
Dessinez les aiguilles des horloges.



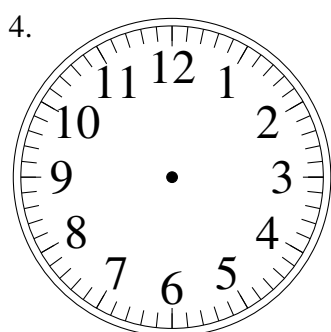
3:11:00



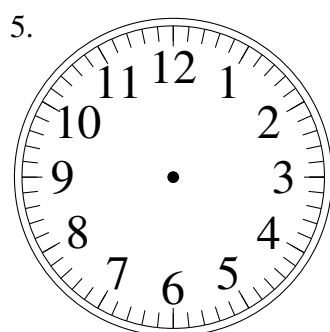
11:16:30



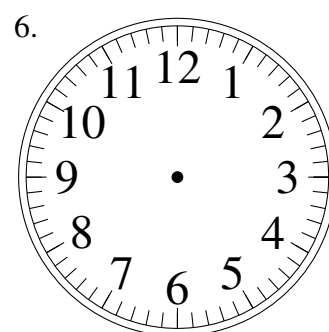
3:33:30



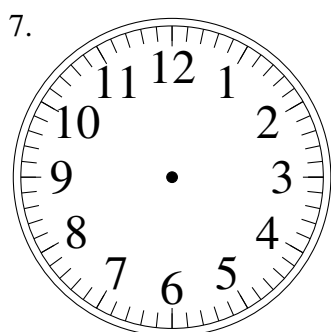
5:46:00



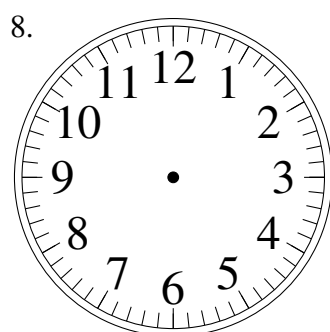
5:21:30



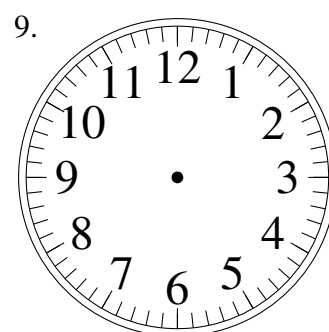
4:30:00



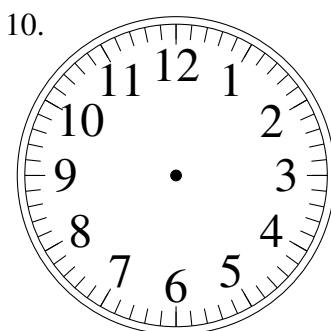
6:38:00



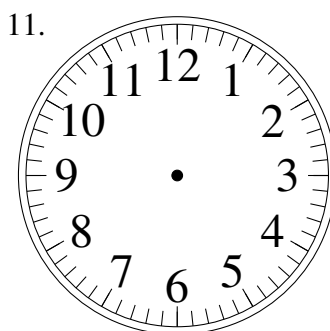
3:03:30



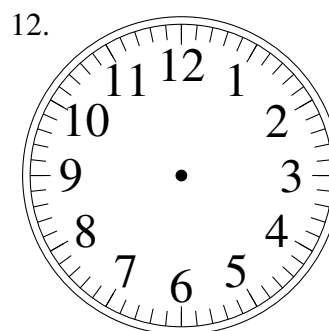
1:53:00



6:52:30



12:36:00

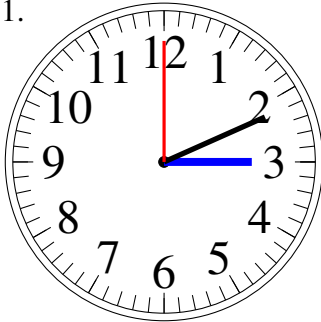


11:38:00

# Dessin d'Aiguilles d'une Horloge Analogique (G) Solutions

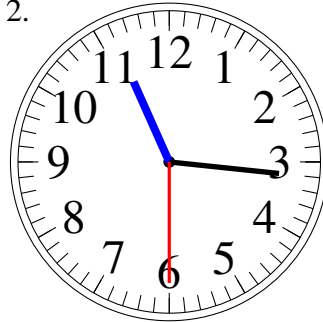
Dessinez les aiguilles des horloges.

1.



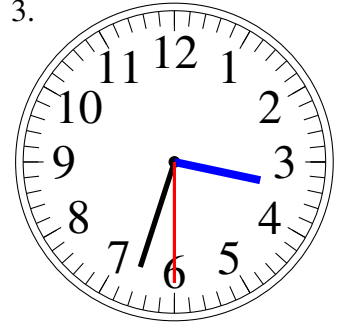
3:11:00

2.



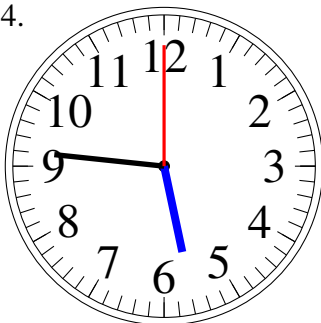
11:16:30

3.



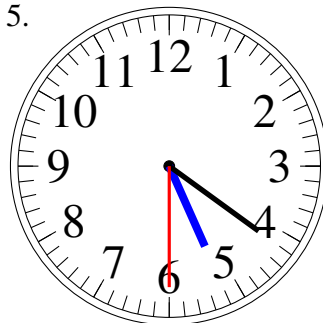
3:33:30

4.



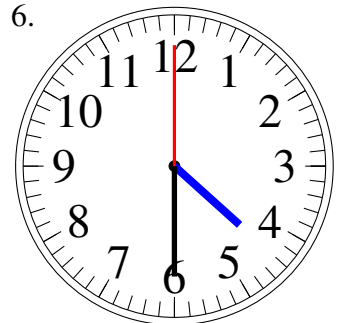
5:46:00

5.



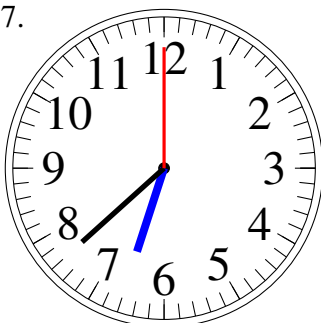
5:21:30

6.



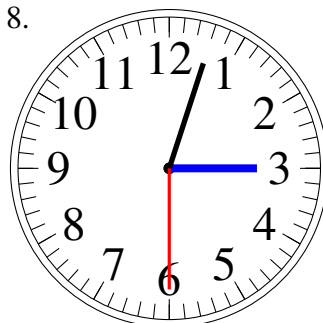
4:30:00

7.



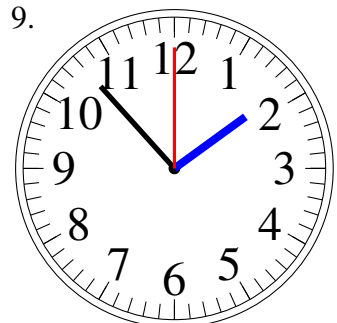
6:38:00

8.



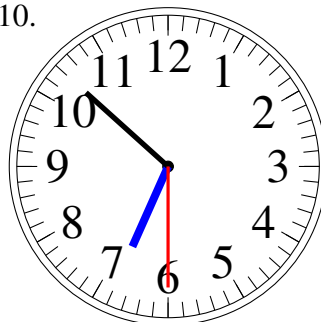
3:03:30

9.



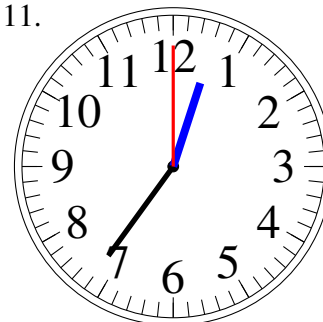
1:53:00

10.



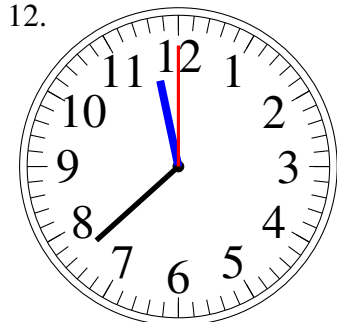
6:52:30

11.



12:36:00

12.



11:38:00