

# Dessin d'Aiguilles d'une Horloge Analogique (F)

Dessinez les aiguilles des horloges.

1.



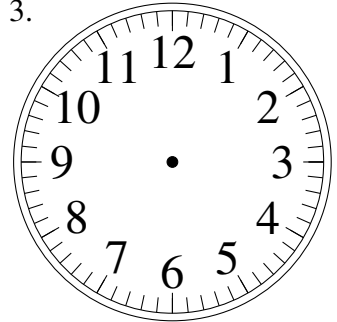
4:23:30

2.



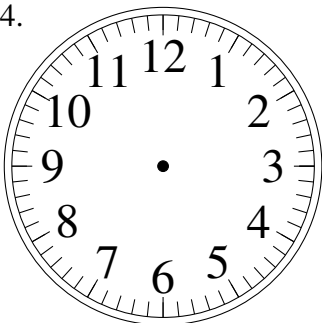
12:15:30

3.



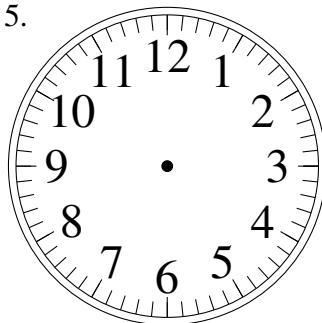
1:13:30

4.



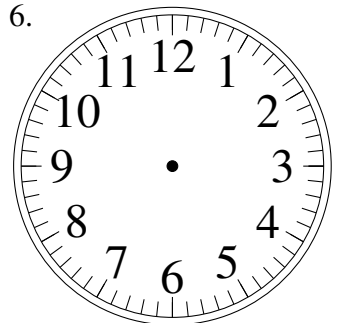
4:28:00

5.



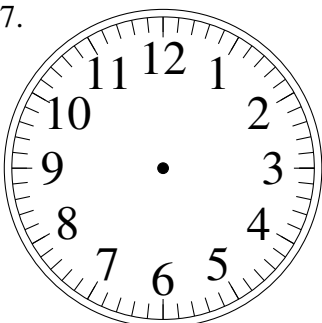
2:42:00

6.



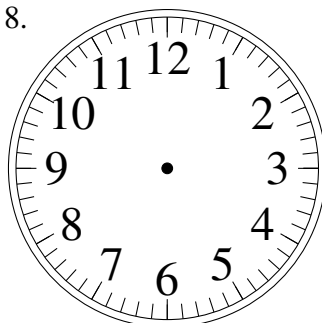
10:08:00

7.



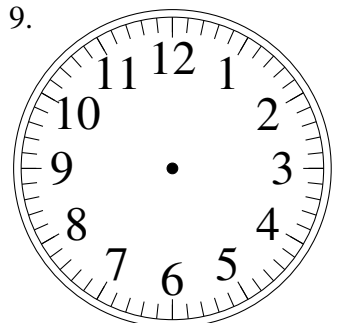
7:48:00

8.



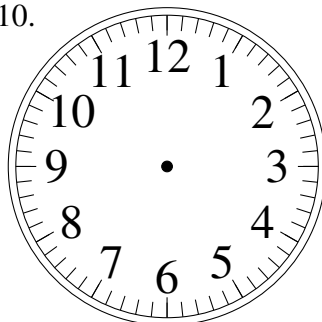
5:06:30

9.



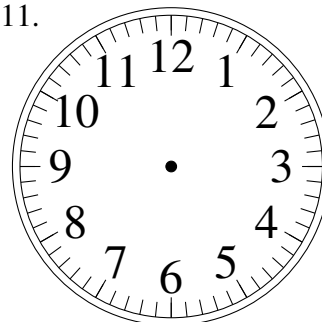
2:43:30

10.



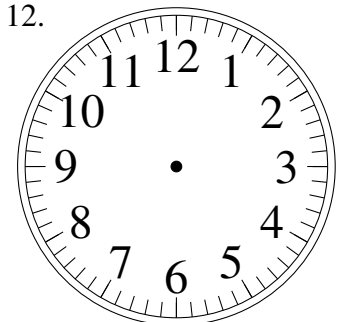
8:19:00

11.



6:25:30

12.

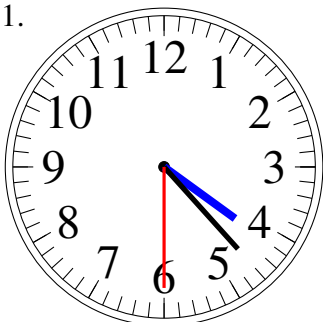


12:03:00

# Dessin d'Aiguilles d'une Horloge Analogique (F) Solutions

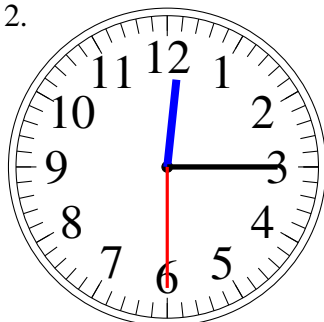
Dessinez les aiguilles des horloges.

1.



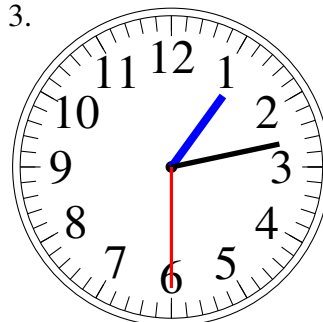
4:23:30

2.



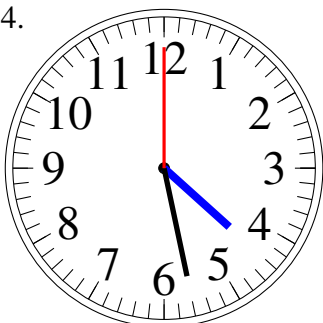
12:15:30

3.



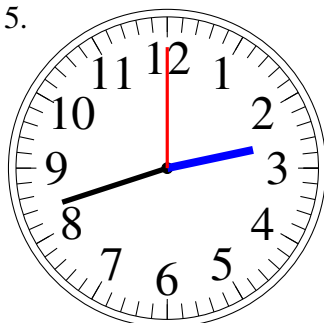
1:13:30

4.



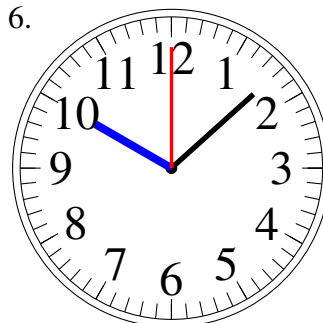
4:28:00

5.



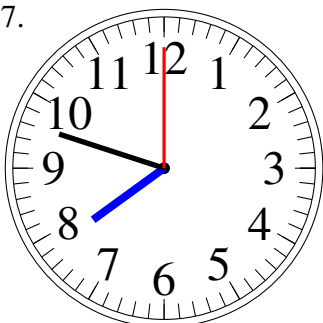
2:42:00

6.



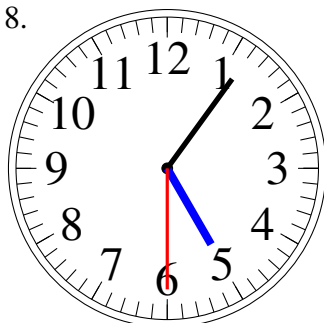
10:08:00

7.



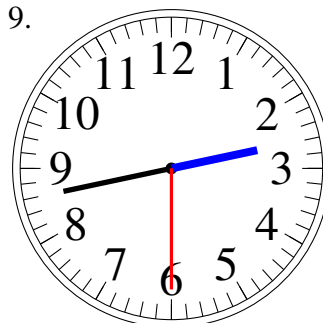
7:48:00

8.



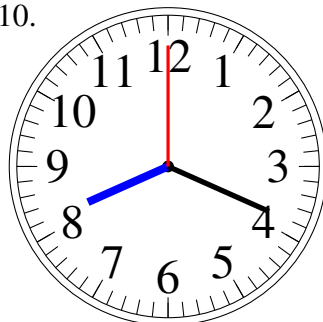
5:06:30

9.



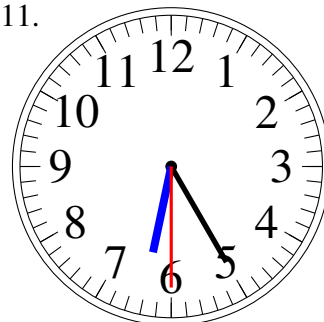
2:43:30

10.



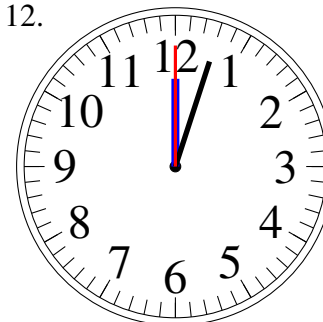
8:19:00

11.



6:25:30

12.



12:03:00