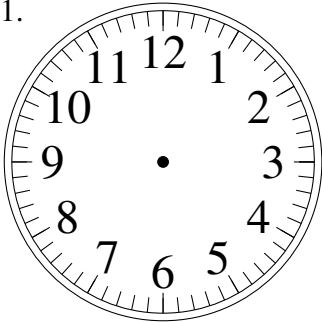


# Dessin d'Aiguilles d'une Horloge Analogique (D)

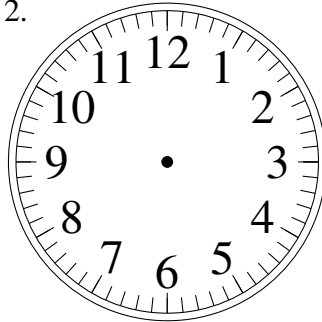
Dessinez les aiguilles des horloges.

1.



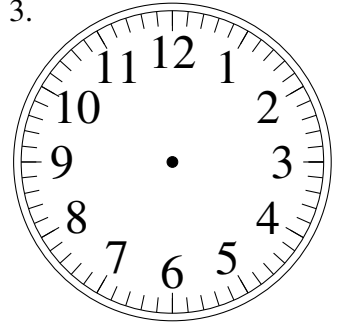
7:36:30

2.



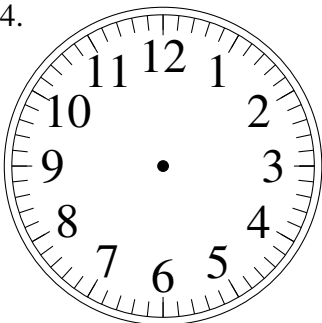
11:32:30

3.



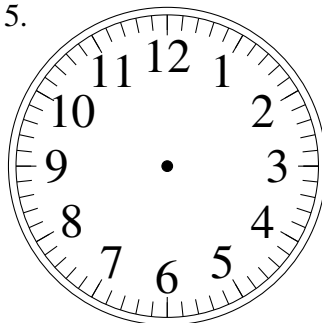
4:14:30

4.



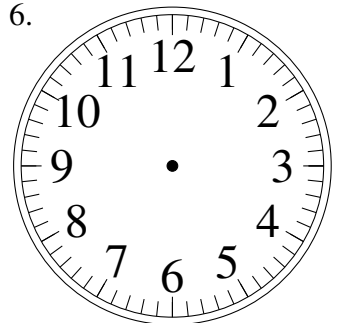
3:09:30

5.



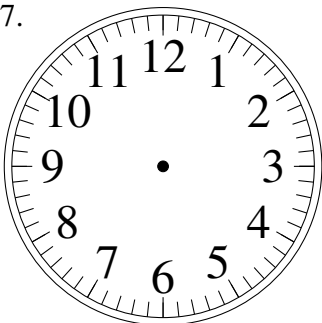
5:15:00

6.



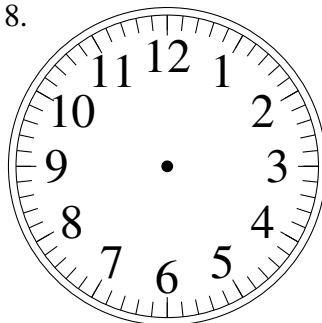
2:09:30

7.



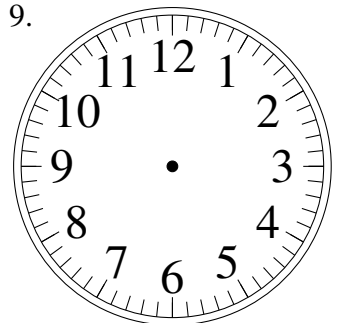
7:17:00

8.



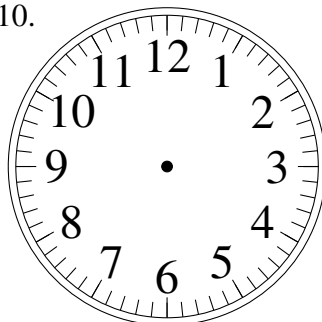
10:50:30

9.



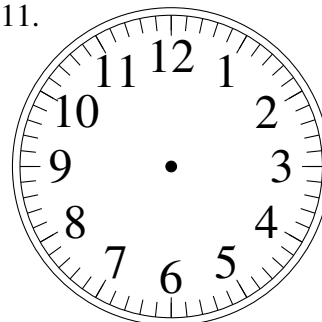
9:26:00

10.



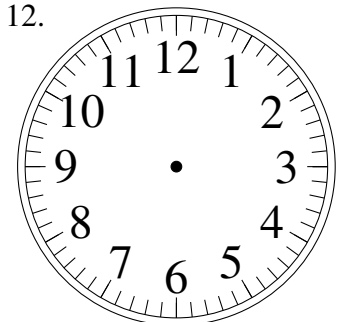
1:21:30

11.



6:16:00

12.

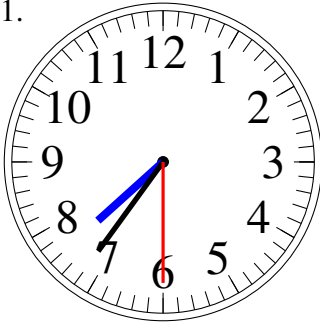


4:38:00

# Dessin d'Aiguilles d'une Horloge Analogique (D) Solutions

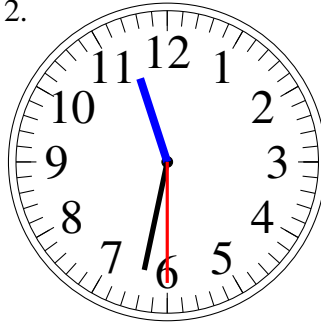
Dessinez les aiguilles des horloges.

1.



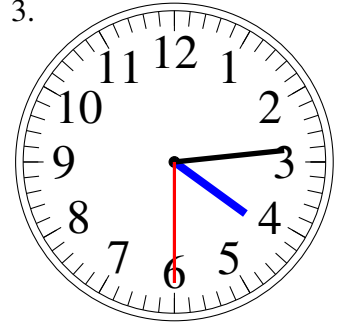
7:36:30

2.



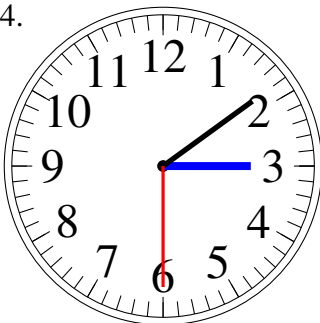
11:32:30

3.



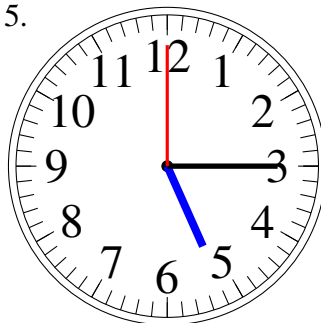
4:14:30

4.



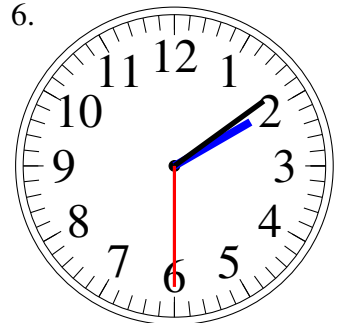
3:09:30

5.



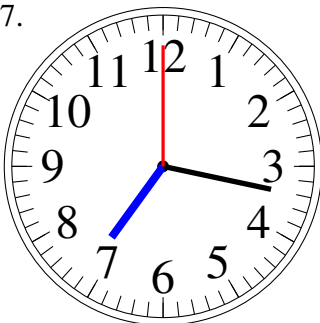
5:15:00

6.



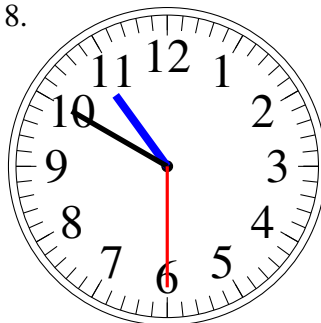
2:09:30

7.



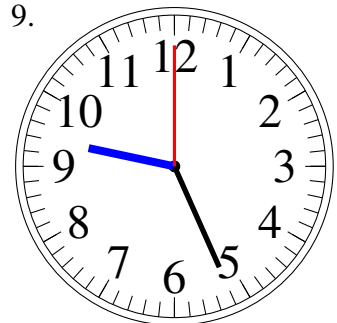
7:17:00

8.



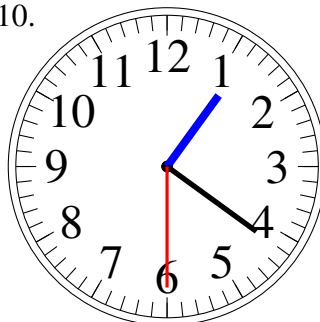
10:50:30

9.



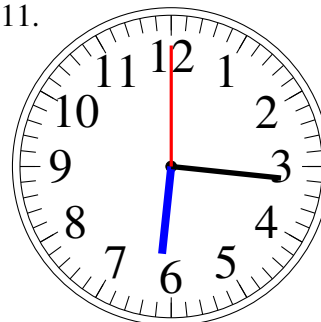
9:26:00

10.



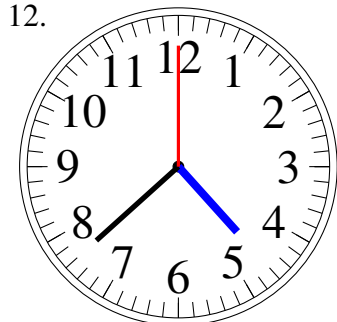
1:21:30

11.



6:16:00

12.



4:38:00