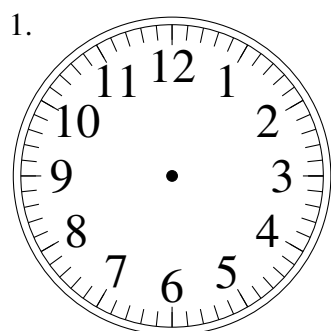
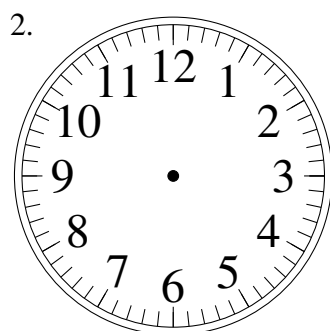


Dessin d'Aiguilles d'une Horloge Analogique (C)

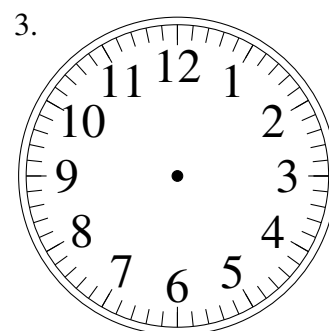
Dessinez les aiguilles des horloges.



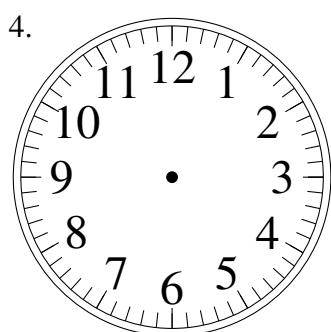
6:31:30



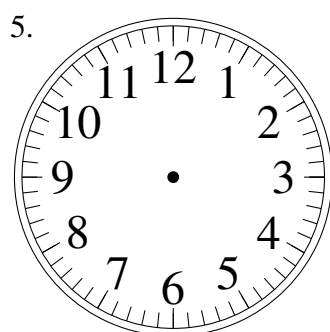
6:52:30



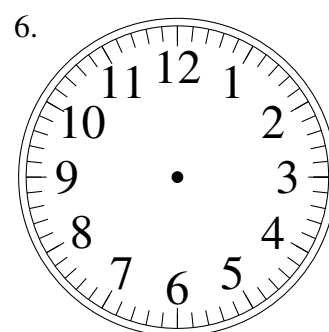
4:52:00



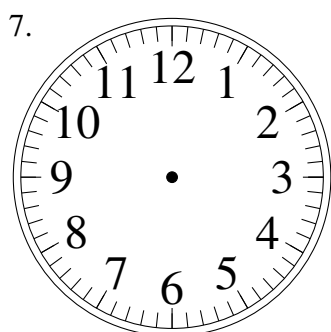
3:13:00



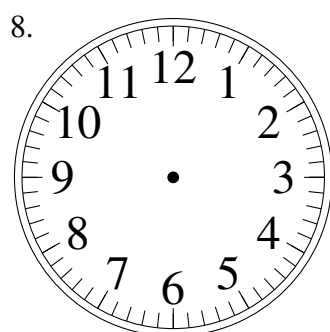
12:47:30



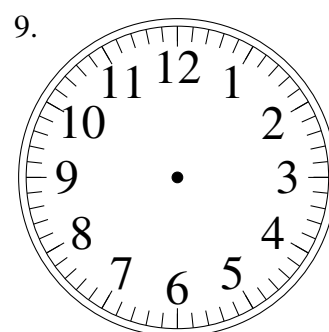
11:17:00



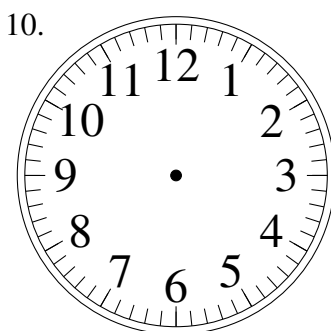
10:32:00



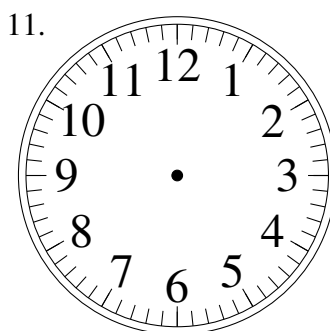
10:05:30



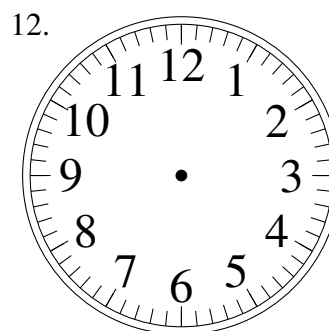
6:06:30



3:59:30



9:15:30

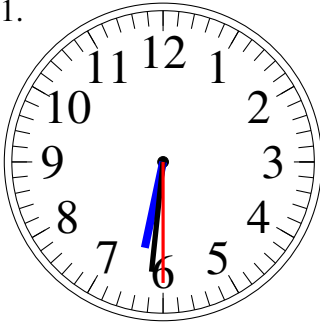


11:13:30

Dessin d'Aiguilles d'une Horloge Analogique (C) Solutions

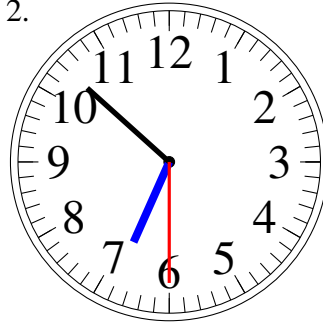
Dessinez les aiguilles des horloges.

1.



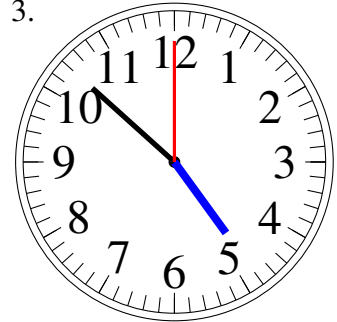
6:31:30

2.



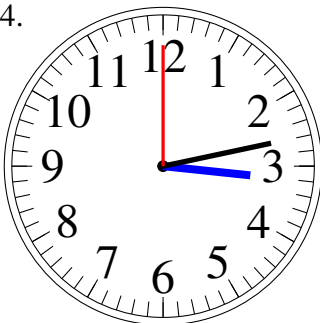
6:52:30

3.



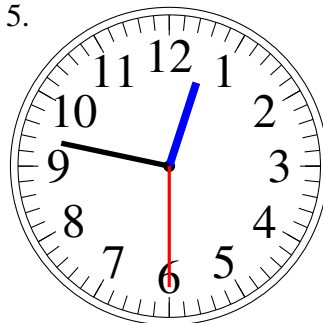
4:52:00

4.



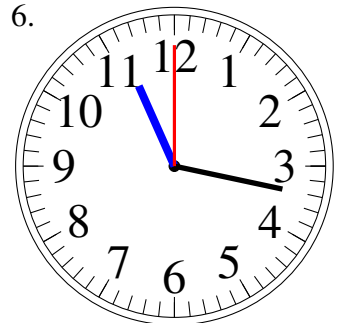
3:13:00

5.



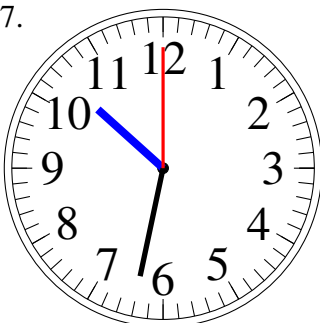
12:47:30

6.



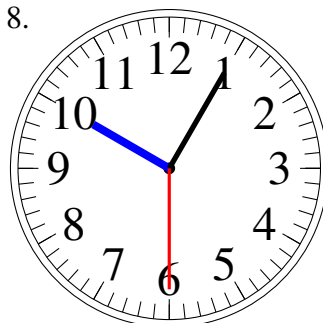
11:17:00

7.



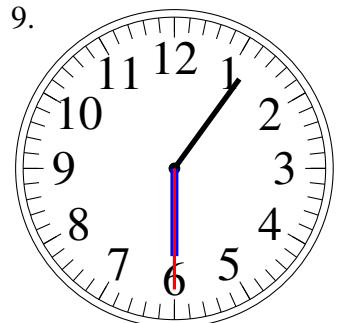
10:32:00

8.



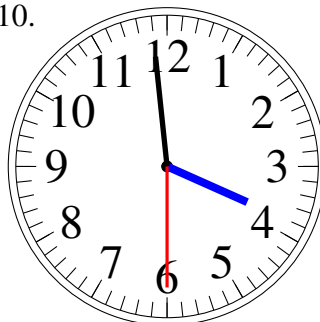
10:05:30

9.



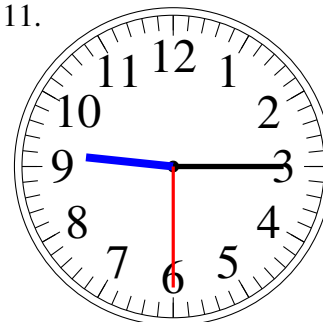
6:06:30

10.



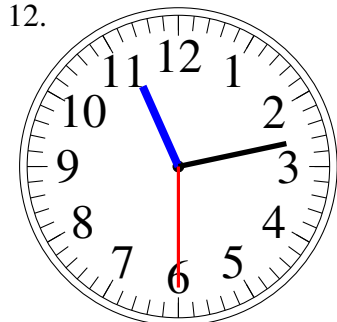
3:59:30

11.



9:15:30

12.



11:13:30