

# Dessin d'Aiguilles d'une Horloge Analogique (J)

Dessinez les aiguilles des horloges.

1.



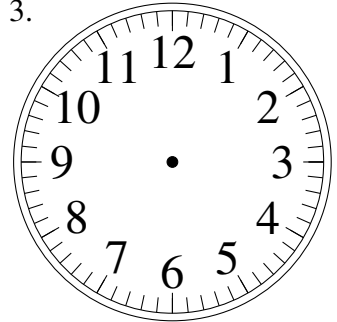
8:34:15

2.



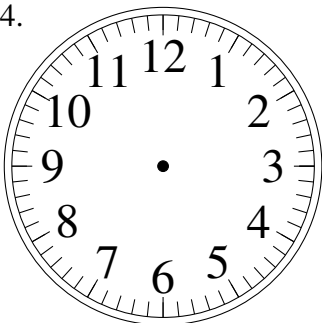
12:52:00

3.



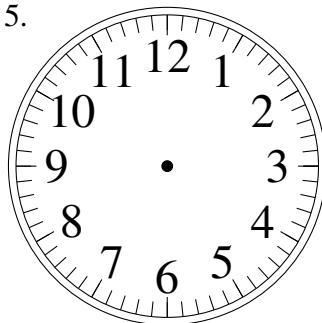
6:43:45

4.



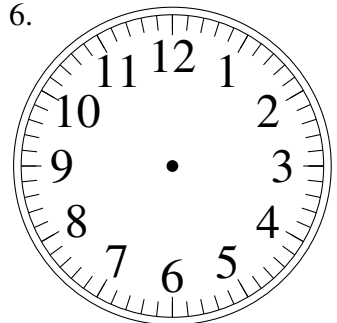
11:05:00

5.



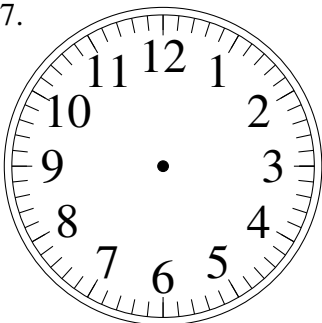
11:47:45

6.



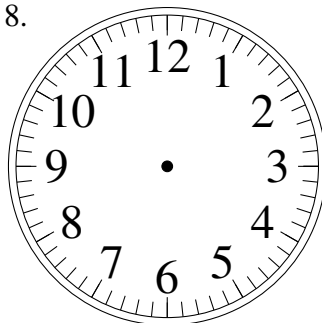
9:07:30

7.



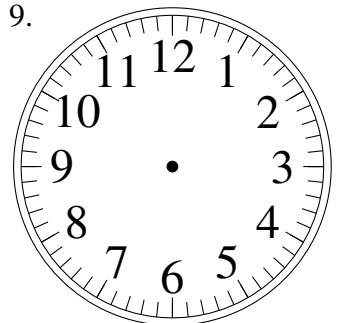
12:50:45

8.



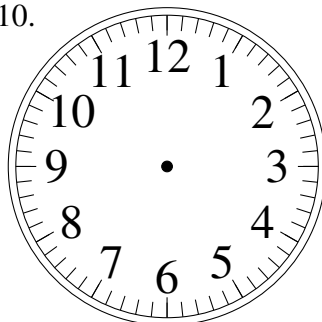
1:04:15

9.



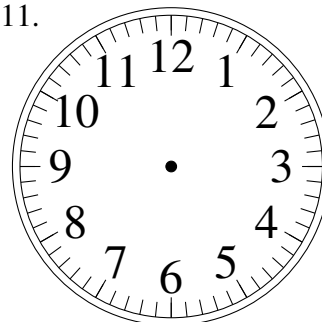
8:47:30

10.



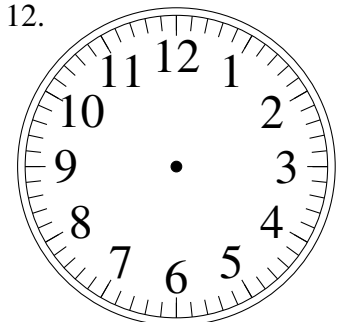
1:04:00

11.



2:56:45

12.

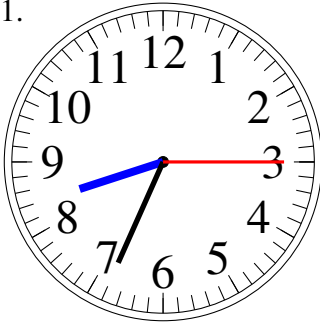


9:17:00

# Dessin d'Aiguilles d'une Horloge Analogique (J) Solutions

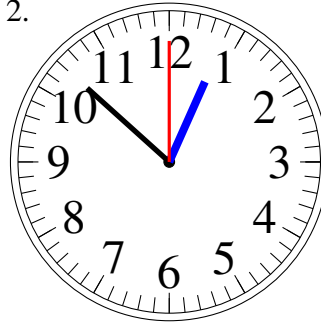
Dessinez les aiguilles des horloges.

1.



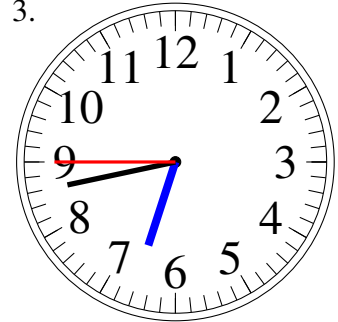
8:34:15

2.



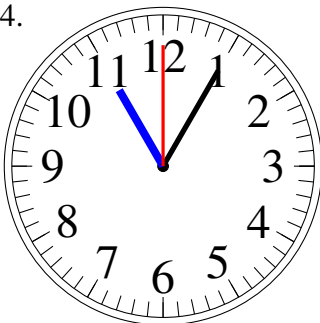
12:52:00

3.



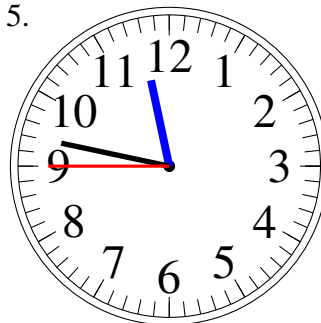
6:43:45

4.



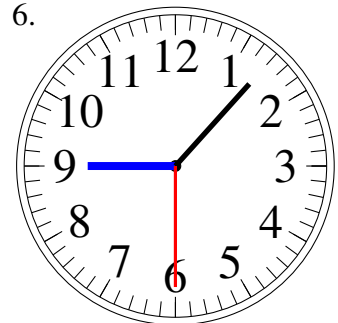
11:05:00

5.



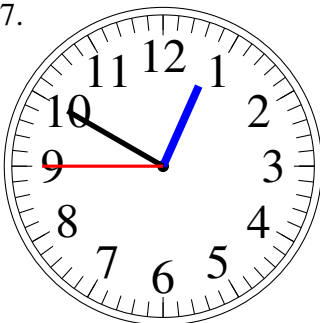
11:47:45

6.



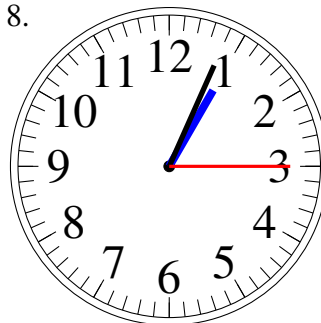
9:07:30

7.



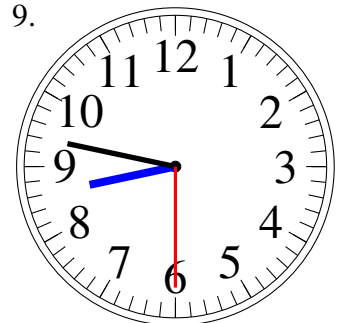
12:50:45

8.



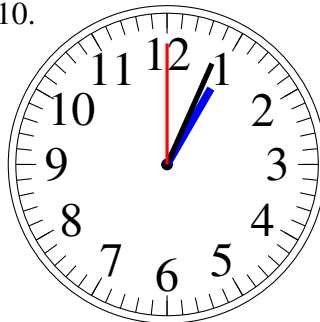
1:04:15

9.



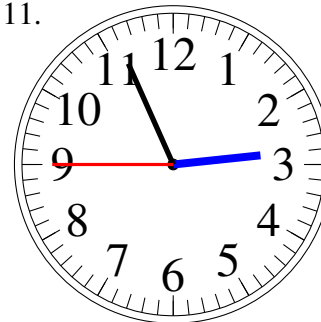
8:47:30

10.



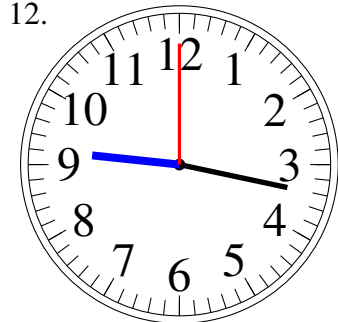
1:04:00

11.



2:56:45

12.



9:17:00