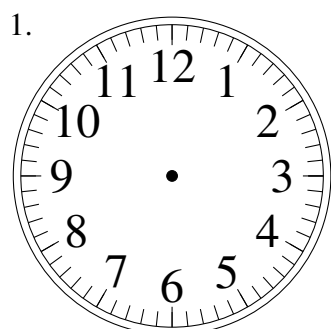
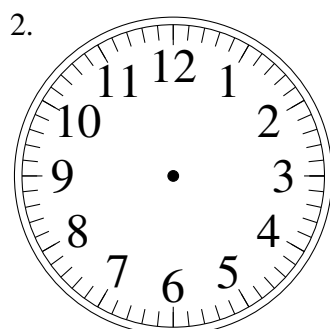


Dessin d'Aiguilles d'une Horloge Analogique (H)

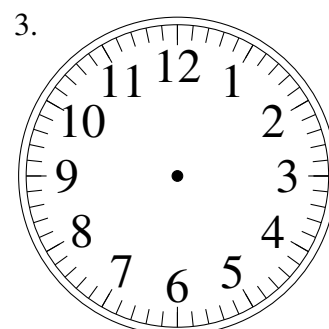
Dessinez les aiguilles des horloges.



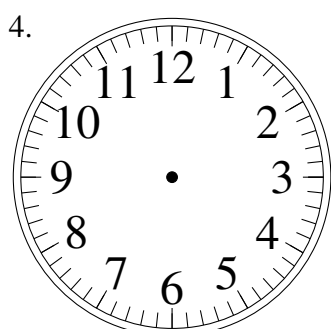
8:01:00



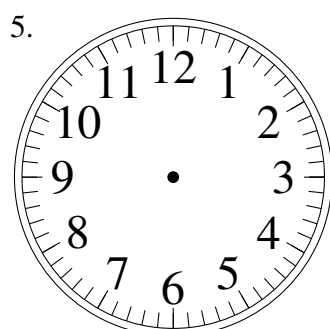
7:13:15



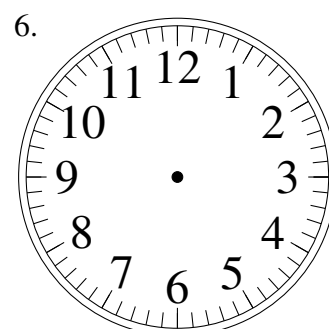
7:04:15



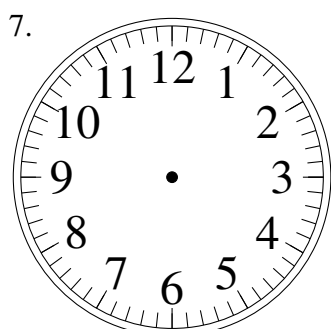
7:04:00



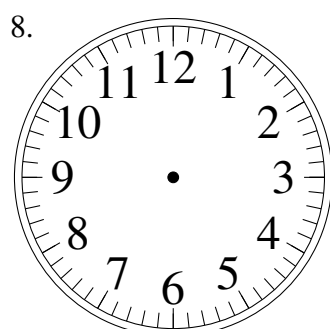
4:10:00



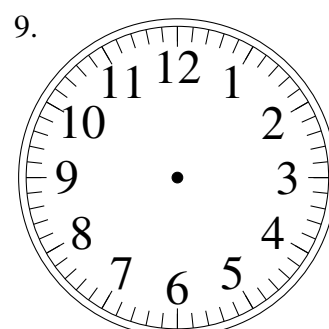
3:09:00



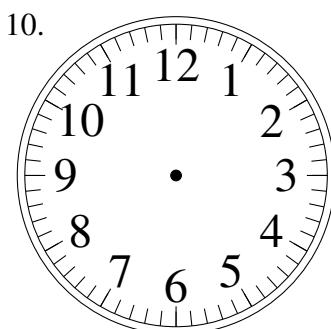
12:07:00



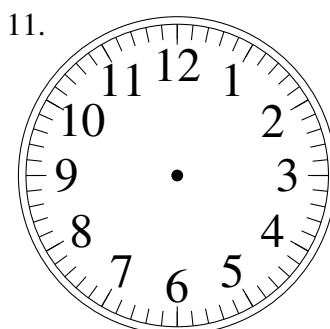
2:36:30



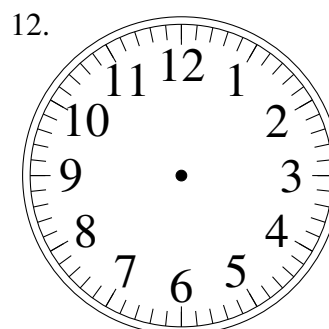
6:14:30



12:49:30



11:11:15

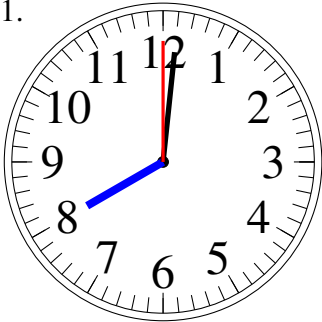


2:11:30

Dessin d'Aiguilles d'une Horloge Analogique (H) Solutions

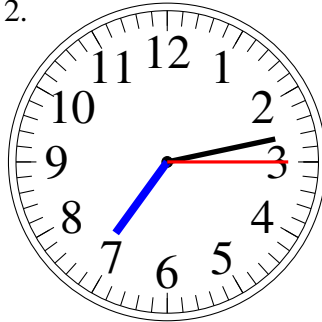
Dessinez les aiguilles des horloges.

1.



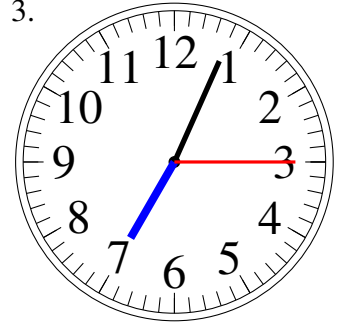
8:01:00

2.



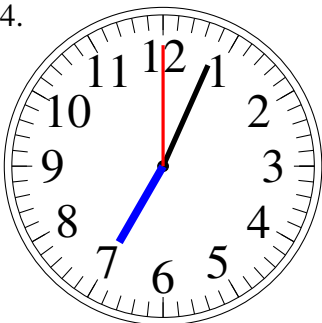
7:13:15

3.



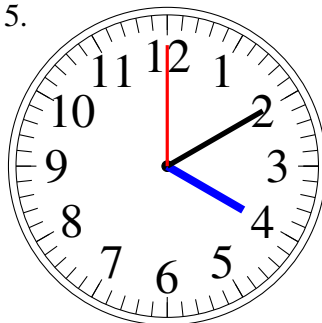
7:04:15

4.



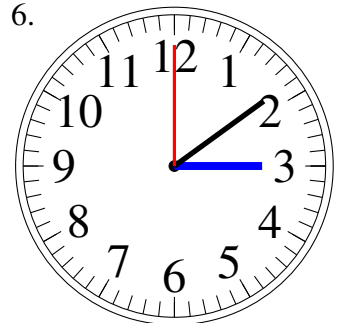
7:04:00

5.



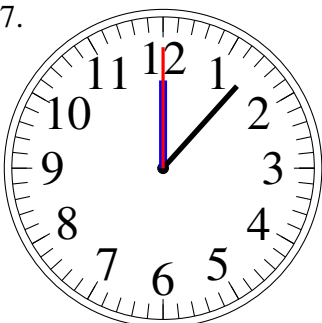
4:10:00

6.



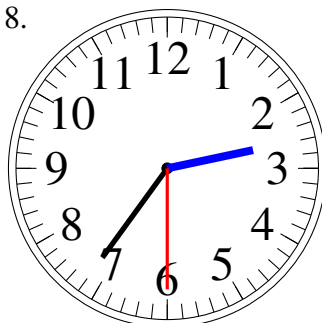
3:09:00

7.



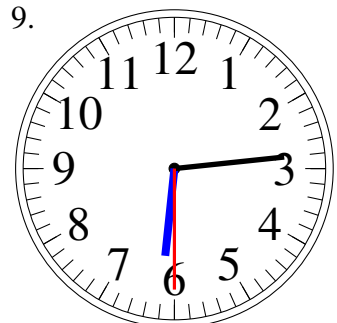
12:07:00

8.



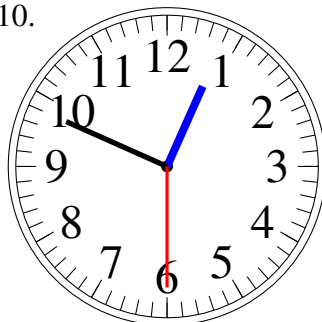
2:36:30

9.



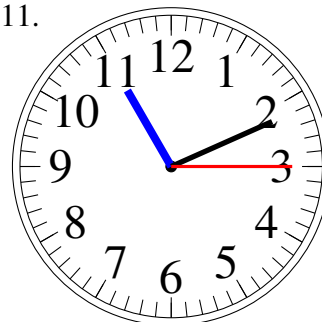
6:14:30

10.



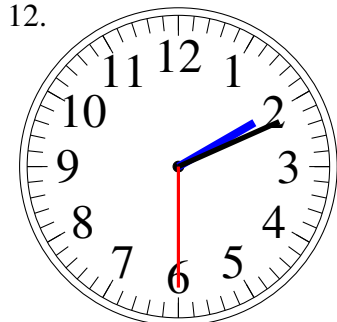
12:49:30

11.



11:11:15

12.



2:11:30