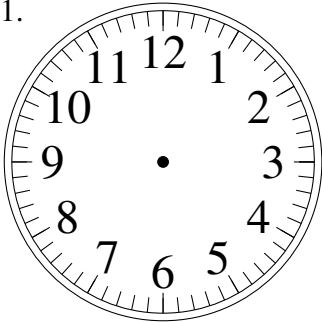


Dessin d'Aiguilles d'une Horloge Analogique (F)

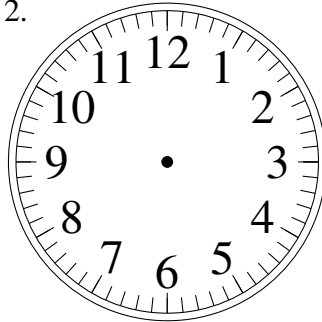
Dessinez les aiguilles des horloges.

1.



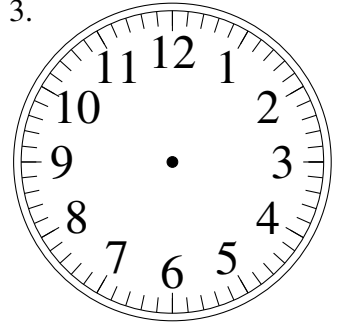
1:38:30

2.



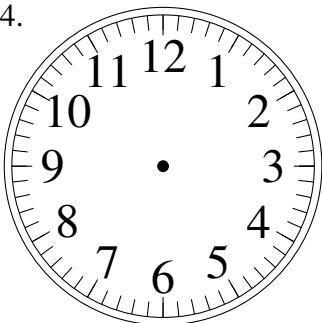
3:32:00

3.



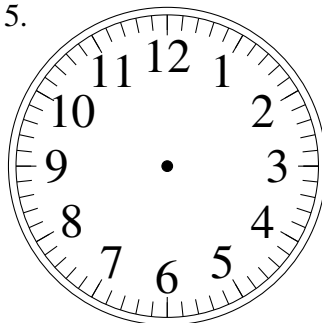
8:49:45

4.



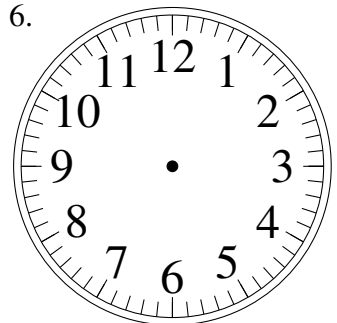
8:58:15

5.



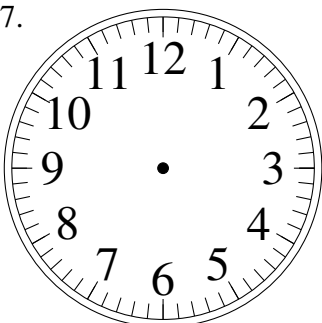
5:07:45

6.



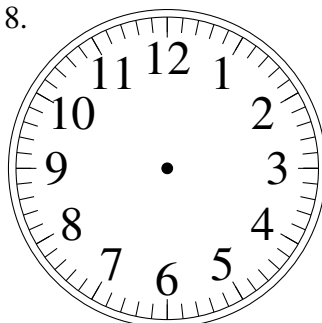
4:18:00

7.



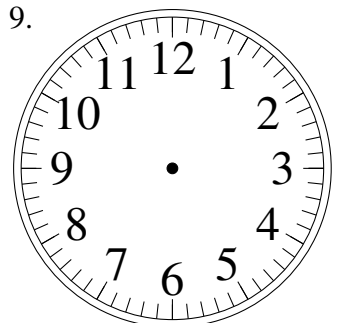
6:46:15

8.



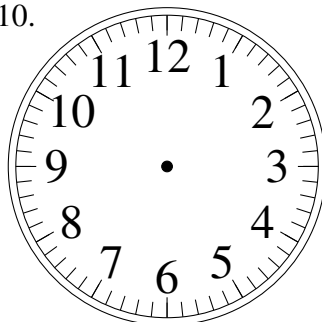
3:17:00

9.



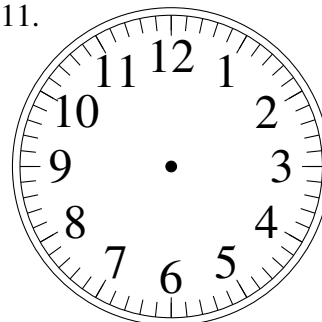
12:39:30

10.



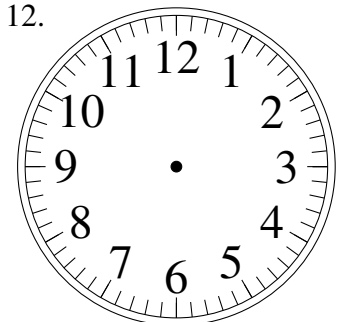
11:46:15

11.



7:01:15

12.

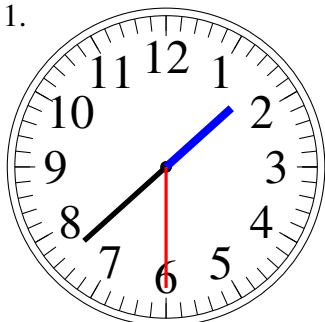


5:41:15

Dessin d'Aiguilles d'une Horloge Analogique (F) Solutions

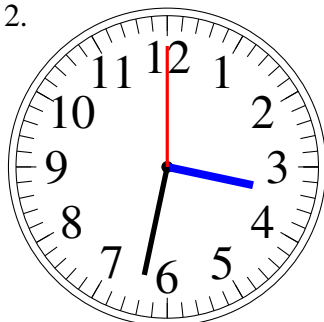
Dessinez les aiguilles des horloges.

1.



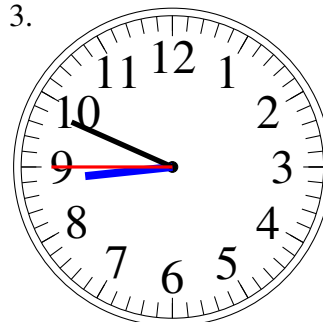
1:38:30

2.



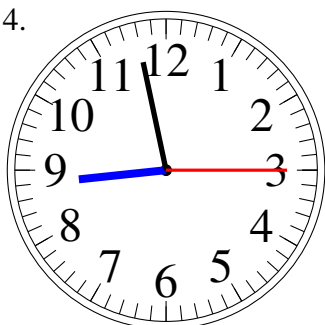
3:32:00

3.



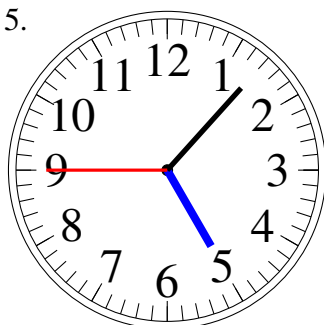
8:49:45

4.



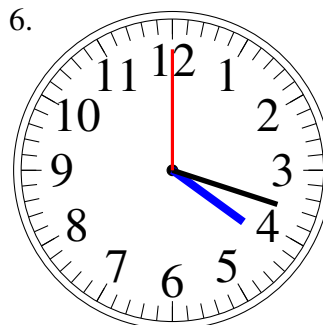
8:58:15

5.



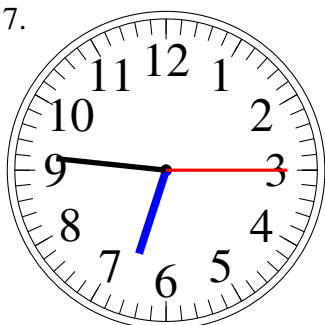
5:07:45

6.



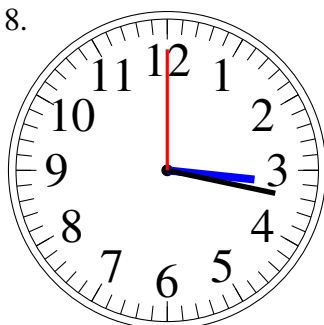
4:18:00

7.



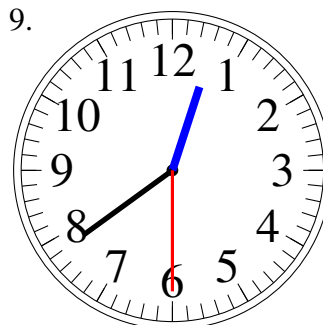
6:46:15

8.



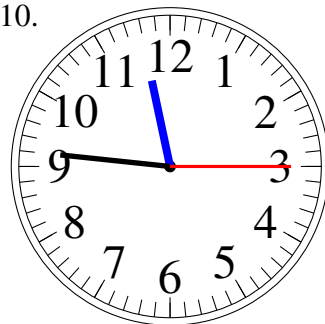
3:17:00

9.



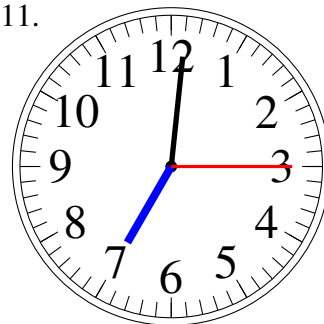
12:39:30

10.



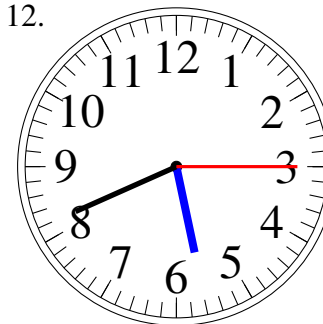
11:46:15

11.



7:01:15

12.



5:41:15