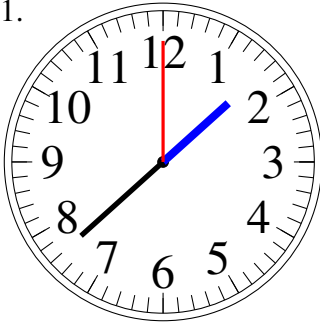


Dessin d'Aiguilles d'une Horloge Analogique (C) Solutions

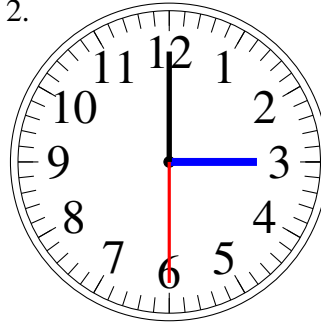
Dessinez les aiguilles des horloges.

1.



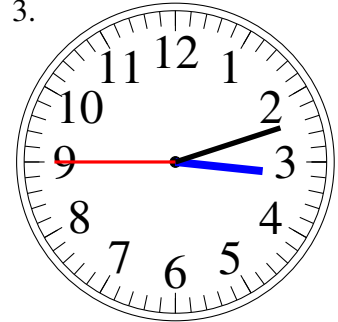
1:38:00

2.



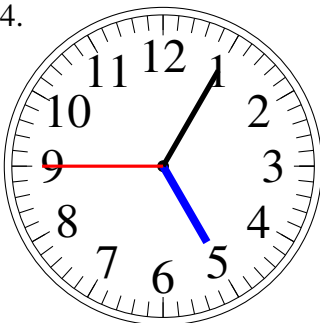
3:00:30

3.



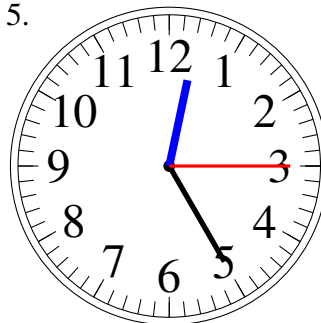
3:12:45

4.



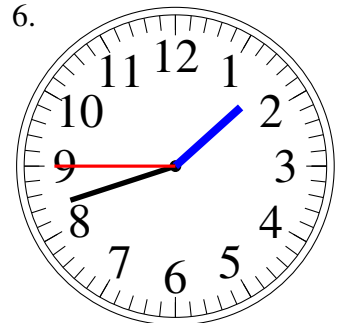
5:05:45

5.



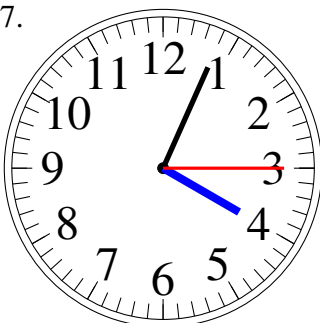
12:25:15

6.



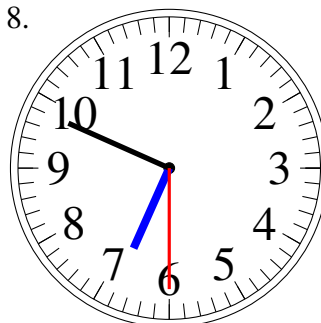
1:42:45

7.



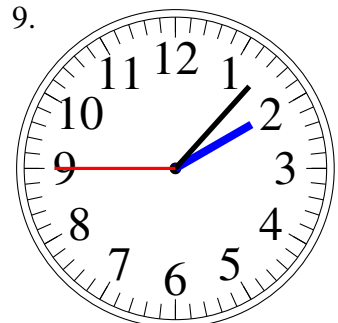
4:04:15

8.



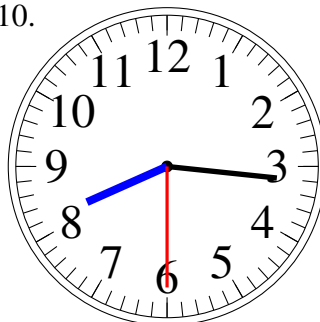
6:49:30

9.



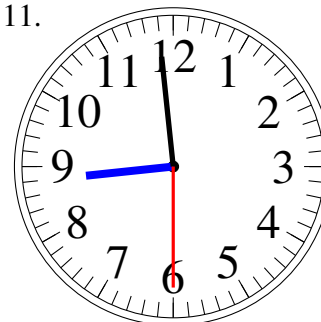
2:07:45

10.



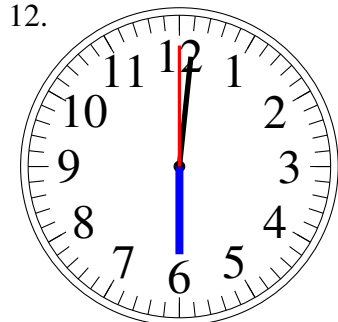
8:16:30

11.



8:59:30

12.



6:01:00