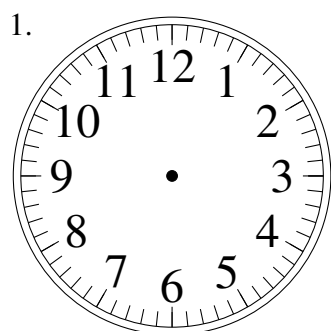
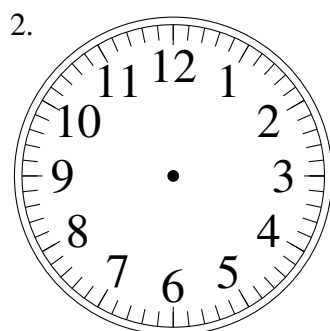


Dessin d'Aiguilles d'une Horloge Analogique (B)

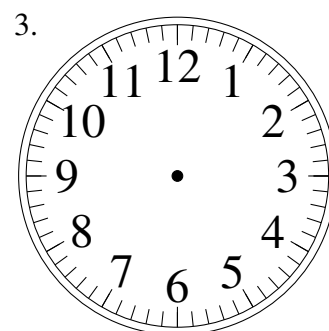
Dessinez les aiguilles des horloges.



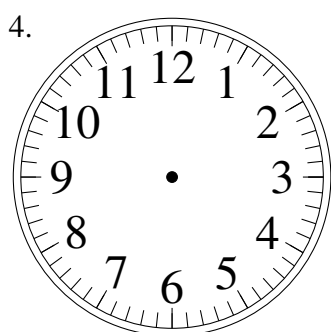
6:15:45



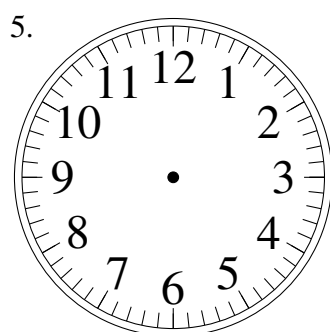
7:09:15



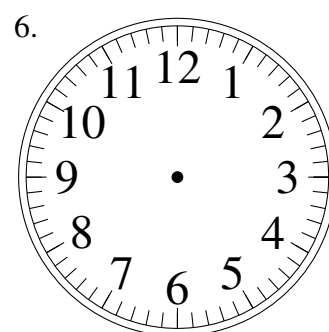
5:48:30



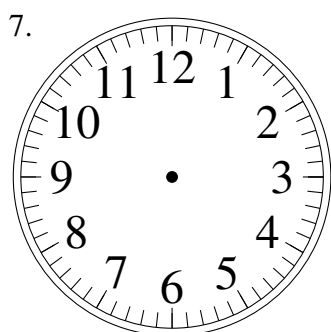
8:26:15



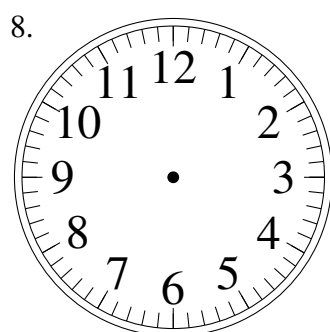
10:35:45



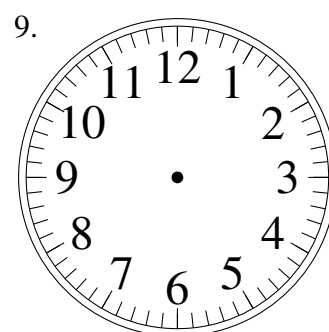
1:06:00



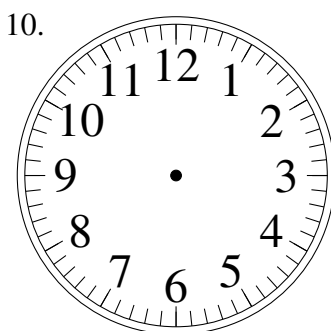
7:49:45



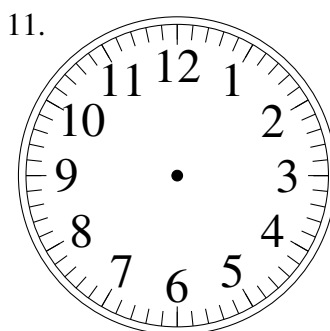
2:59:00



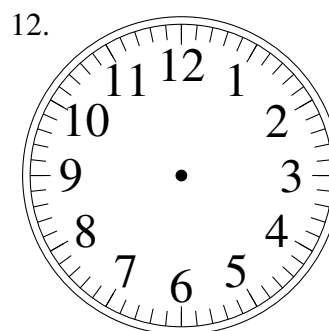
4:22:15



11:37:30



2:34:45

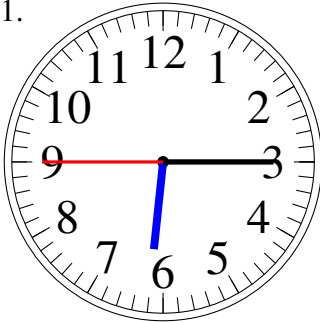


10:00:00

Dessin d'Aiguilles d'une Horloge Analogique (B) Solutions

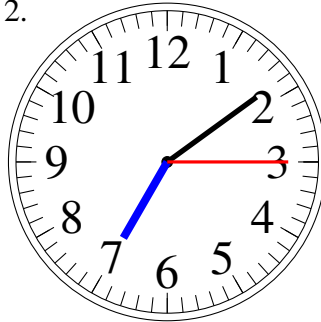
Dessinez les aiguilles des horloges.

1.



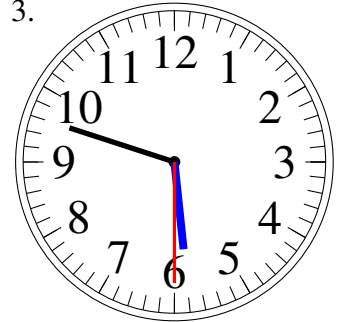
6:15:45

2.



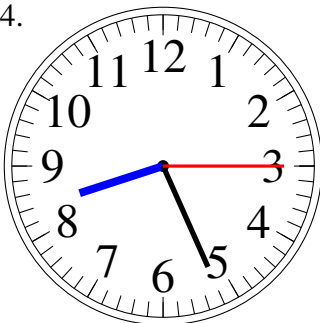
7:09:15

3.



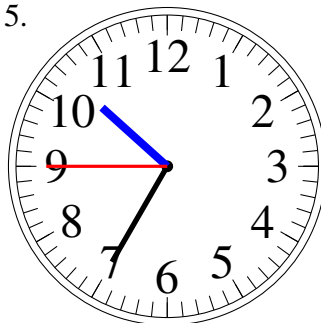
5:48:30

4.



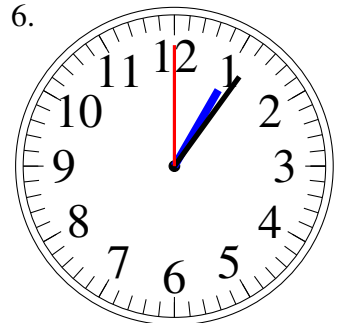
8:26:15

5.



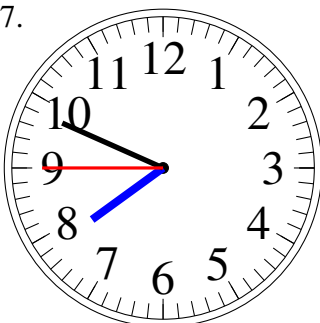
10:35:45

6.



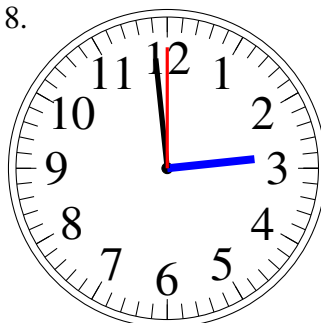
1:06:00

7.



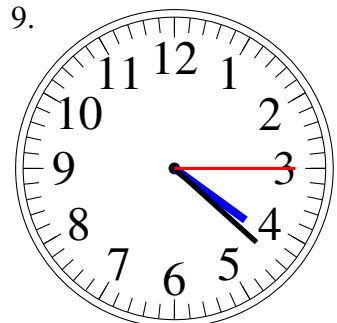
7:49:45

8.



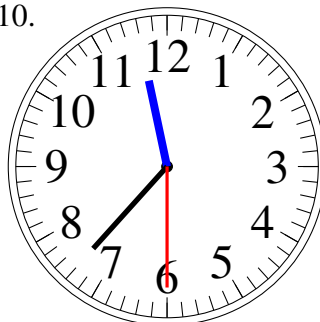
2:59:00

9.



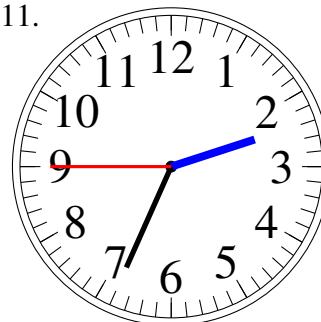
4:22:15

10.



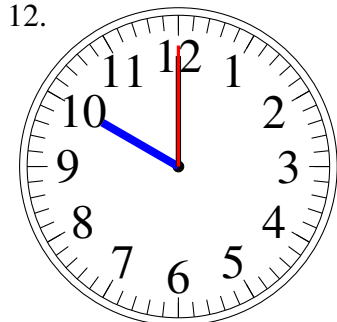
11:37:30

11.



2:34:45

12.



10:00:00