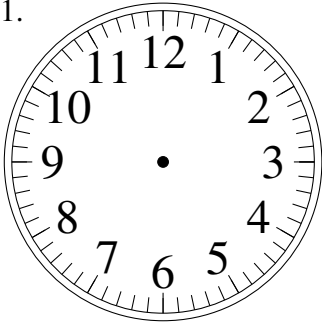


# Dessin d'Aiguilles d'une Horloge Analogique (I)

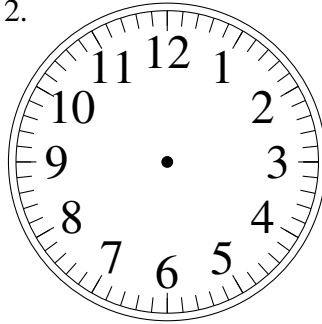
Dessinez les aiguilles des horloges.

1.



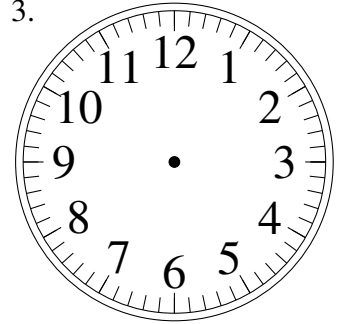
1:44:36

2.



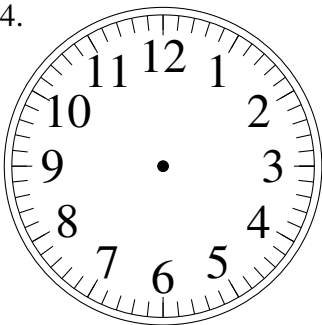
11:12:43

3.



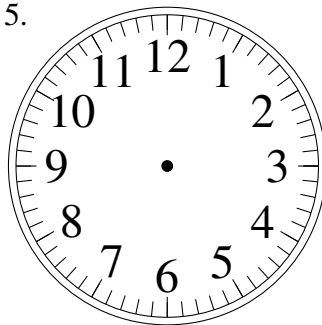
8:10:11

4.



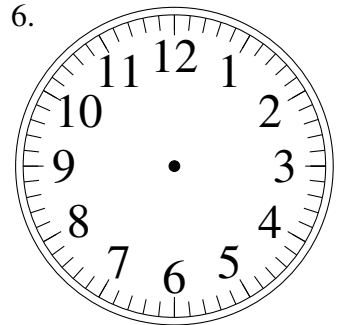
2:18:35

5.



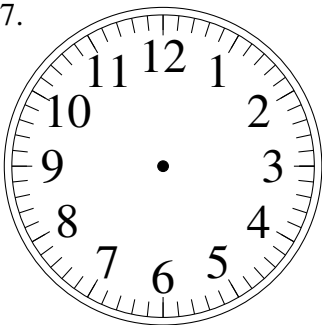
5:29:42

6.



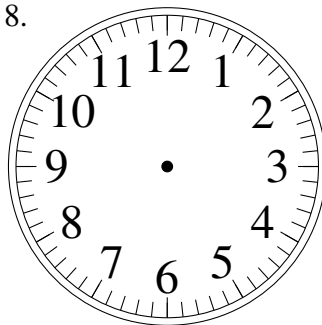
6:52:40

7.



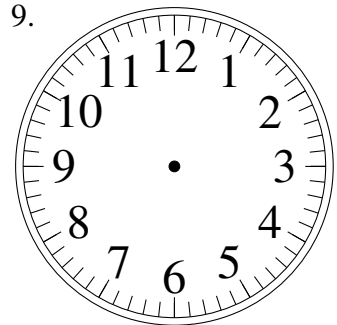
6:12:57

8.



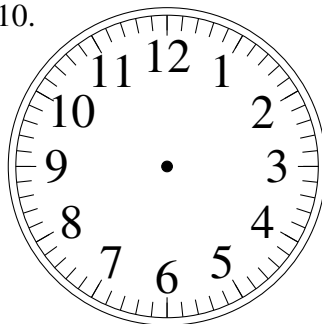
2:34:18

9.



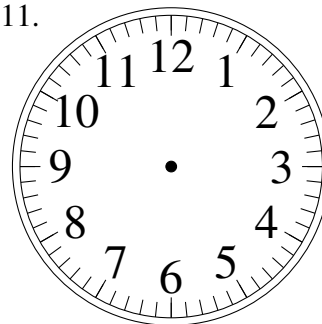
5:36:10

10.



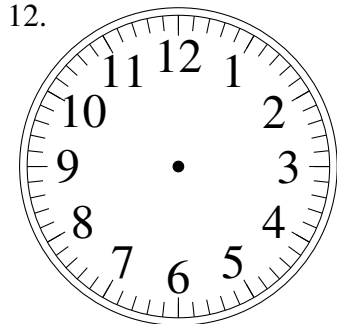
1:36:03

11.



8:57:55

12.

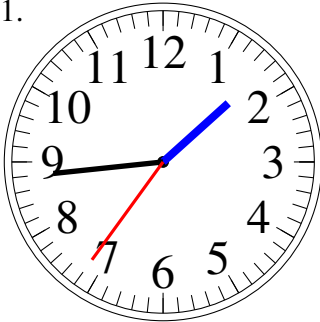


12:49:58

# Dessin d'Aiguilles d'une Horloge Analogique (I) Solutions

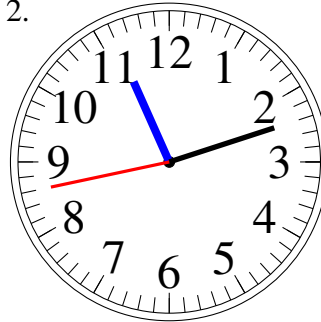
Dessinez les aiguilles des horloges.

1.



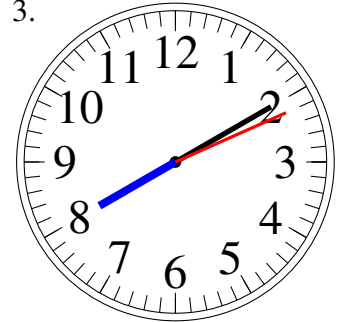
1:44:36

2.



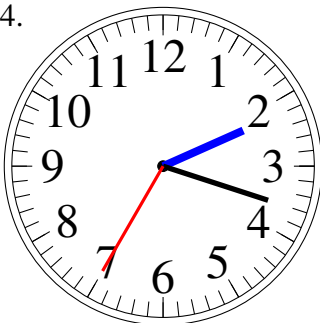
11:12:43

3.



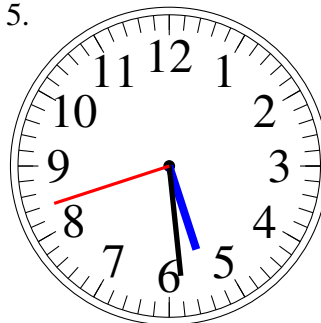
8:10:11

4.



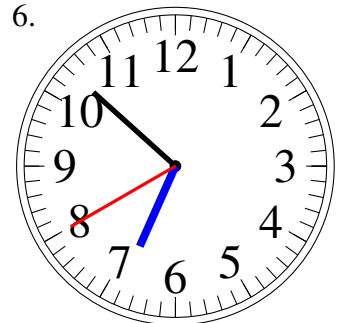
2:18:35

5.



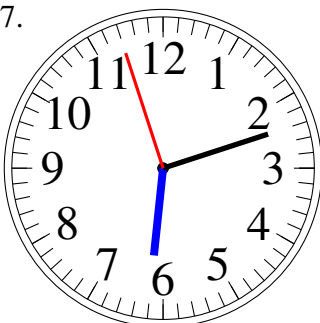
5:29:42

6.



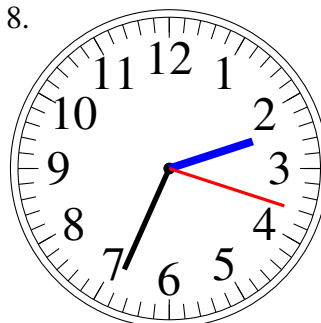
6:52:40

7.



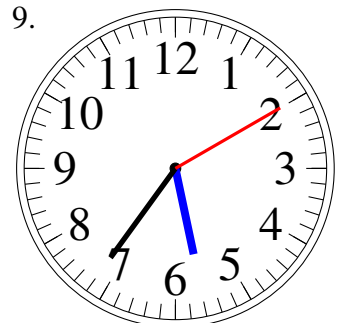
6:12:57

8.



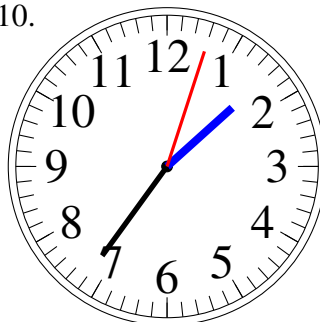
2:34:18

9.



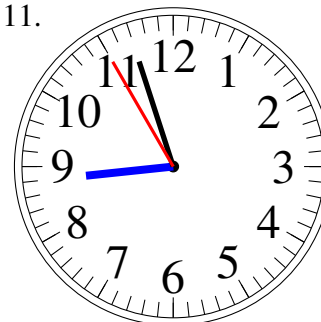
5:36:10

10.



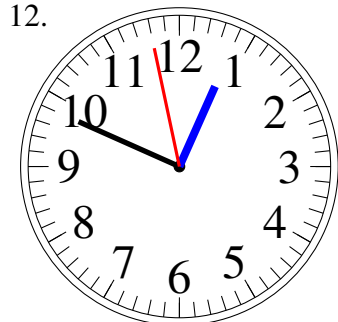
1:36:03

11.



8:57:55

12.



12:49:58