

# Dessin d'Aiguilles d'une Horloge Analogique (A)

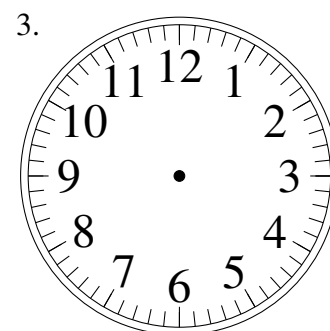
Dessinez les aiguilles des horloges.



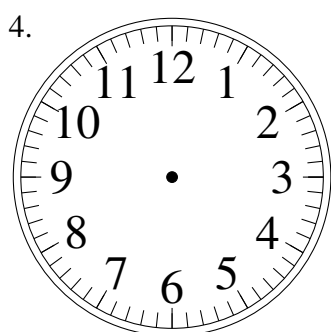
5:14:07



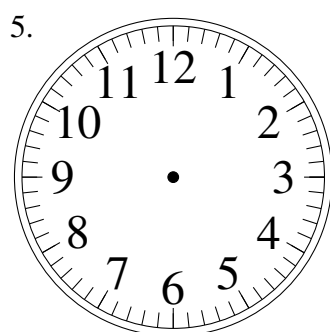
5:35:47



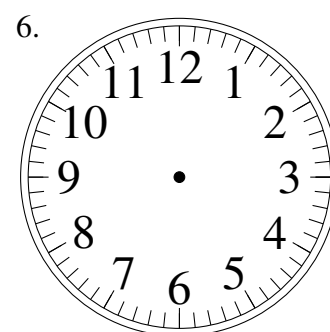
12:40:35



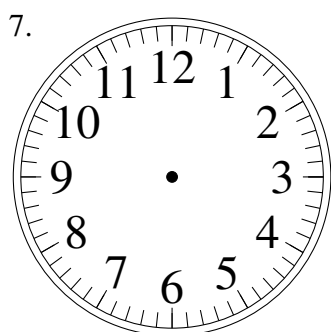
12:44:17



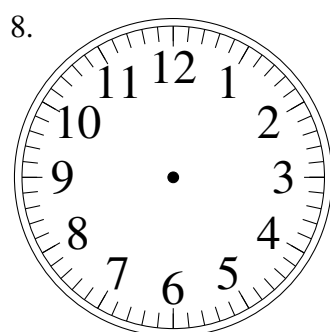
10:14:25



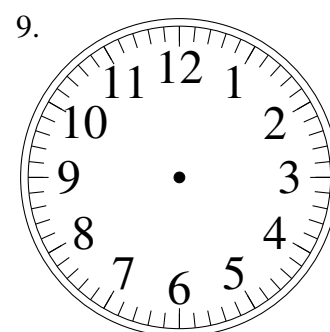
5:17:28



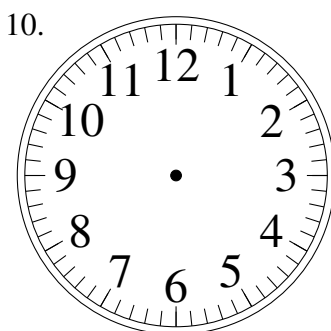
9:07:44



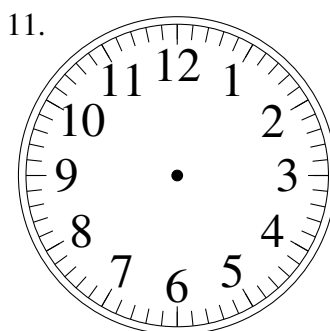
7:57:50



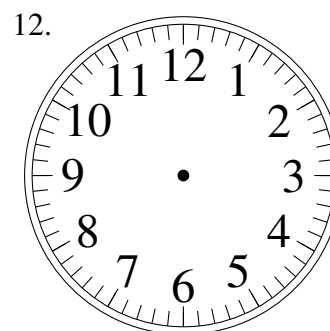
11:58:32



1:11:53



8:10:13

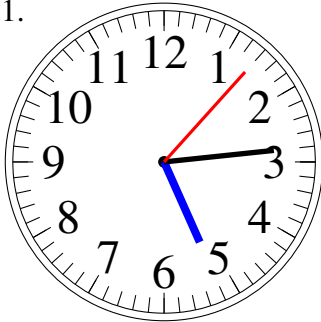


12:15:16

# Dessin d'Aiguilles d'une Horloge Analogique (A) Solutions

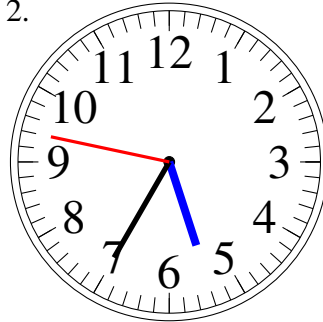
Dessinez les aiguilles des horloges.

1.



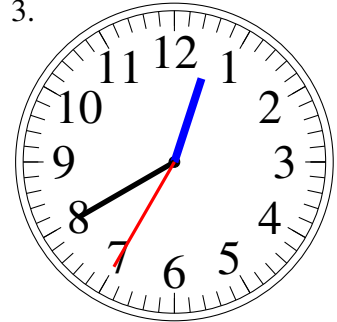
5:14:07

2.



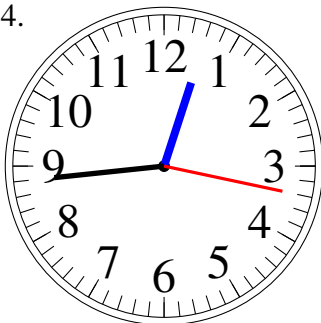
5:35:47

3.



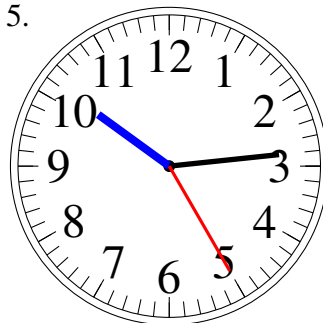
12:40:35

4.



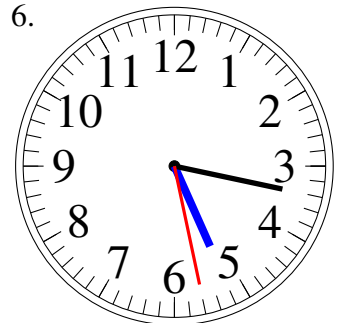
12:44:17

5.



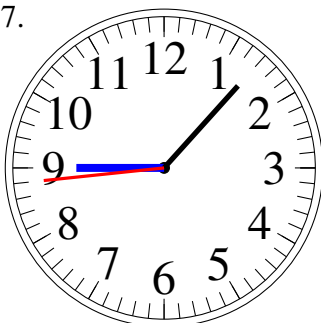
10:14:25

6.



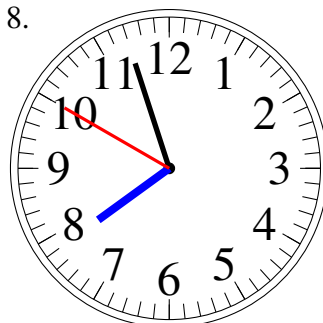
5:17:28

7.



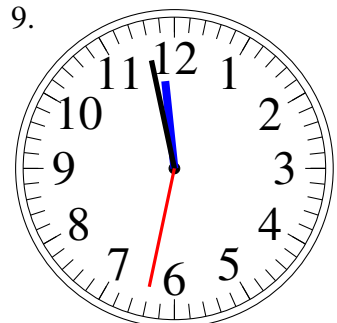
9:07:44

8.



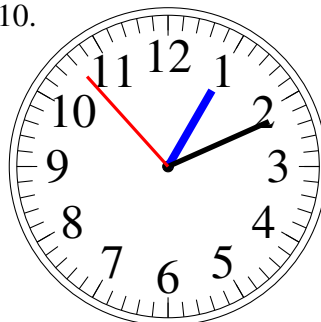
7:57:50

9.



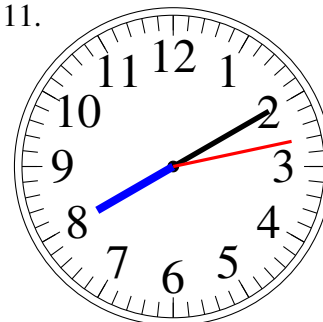
11:58:32

10.



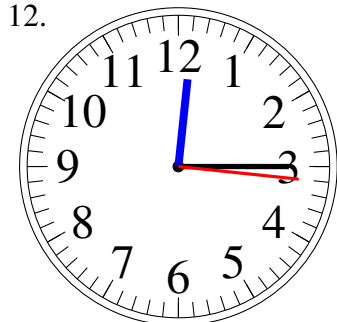
1:11:53

11.



8:10:13

12.



12:15:16