

Dessin d'Aiguilles d'une Horloge Analogique (B)

Dessinez les aiguilles des horloges.



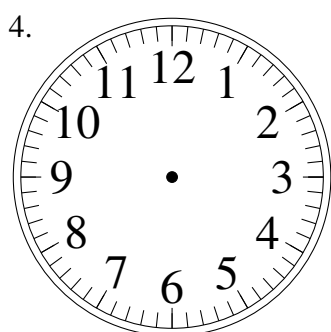
1:00



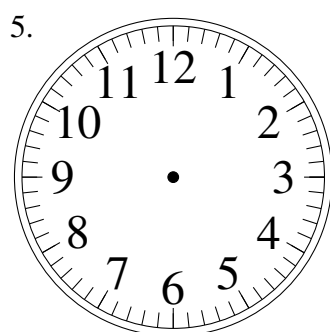
8:30



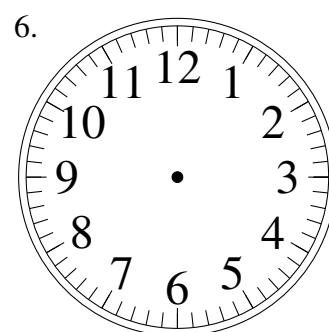
4:30



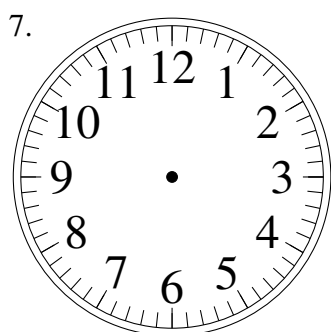
5:30



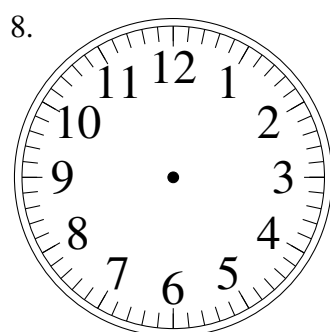
5:30



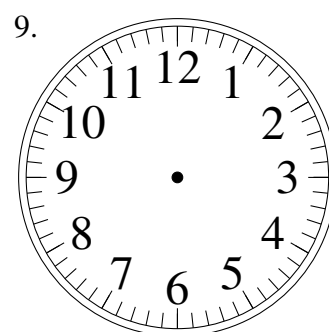
1:30



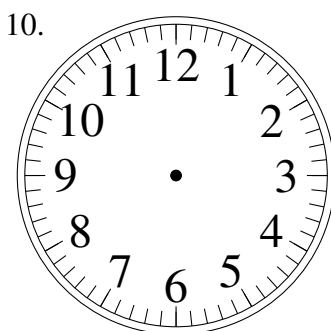
9:30



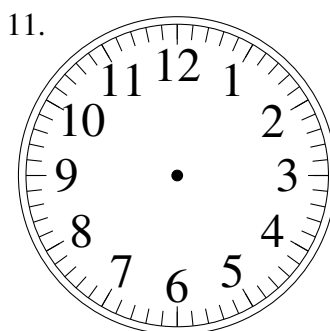
7:00



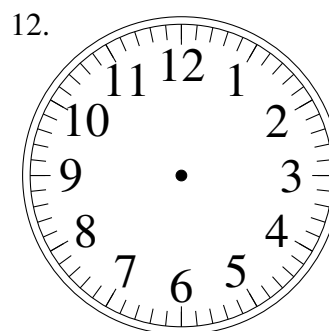
7:30



6:30



4:30

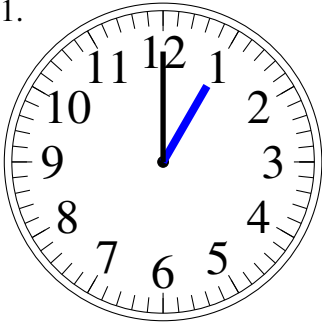


4:30

Dessin d'Aiguilles d'une Horloge Analogique (B) Solutions

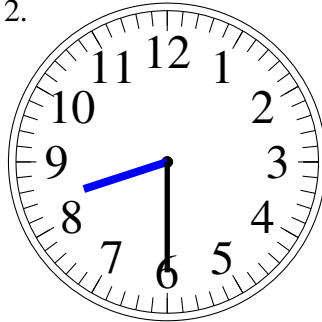
Dessinez les aiguilles des horloges.

1.



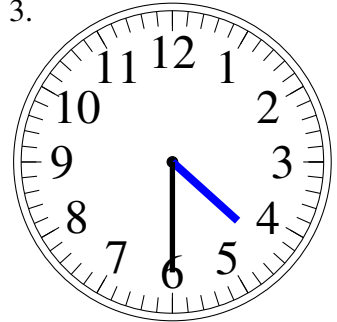
1:00

2.



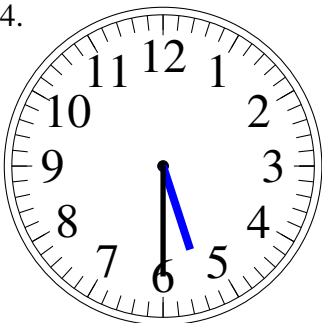
8:30

3.



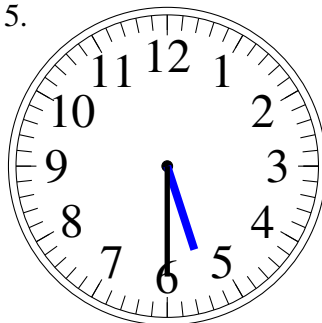
4:30

4.



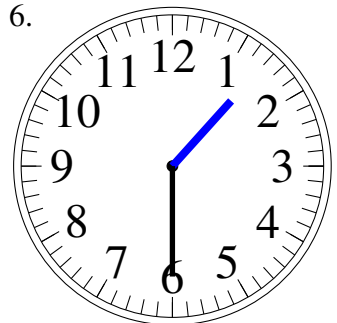
5:30

5.



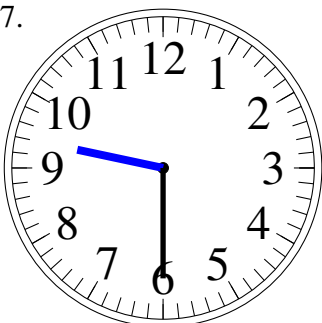
5:30

6.



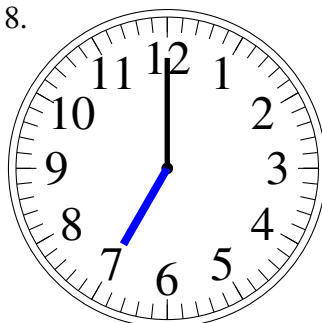
1:30

7.



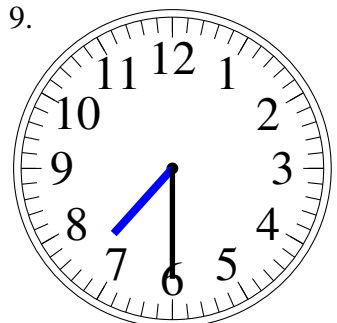
9:30

8.



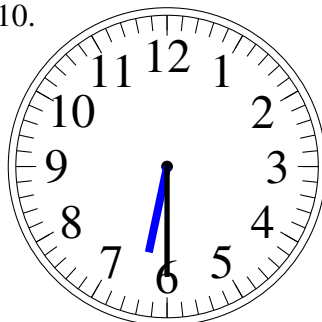
7:00

9.



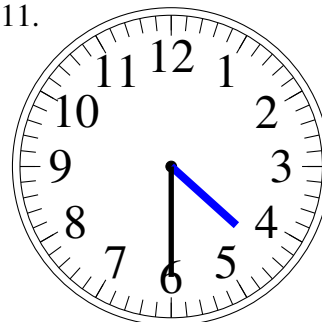
7:30

10.



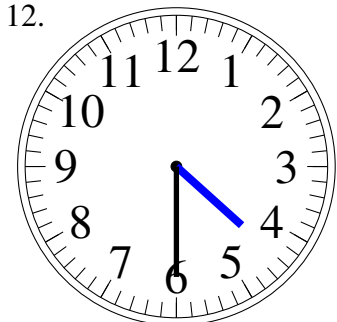
6:30

11.



4:30

12.



4:30