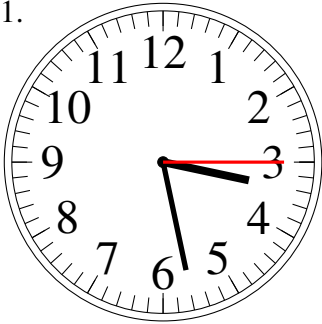


# Lecture d'Horloge Analogue (J)

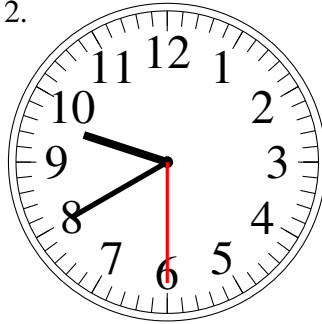
Lisez le temps indiqué et inscrivez le sous l'horloge.

1.



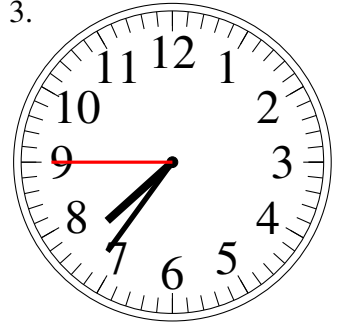
\_\_\_\_\_

2.



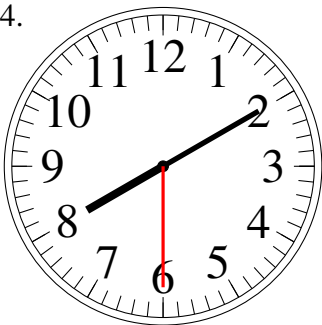
\_\_\_\_\_

3.



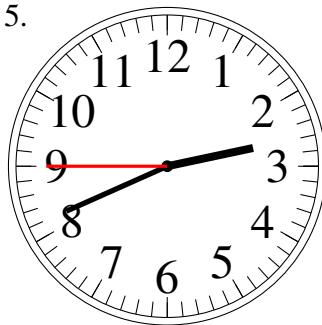
\_\_\_\_\_

4.



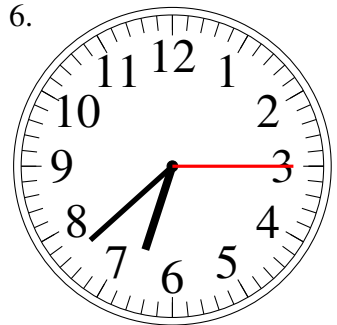
\_\_\_\_\_

5.



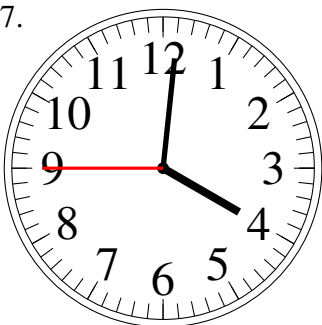
\_\_\_\_\_

6.



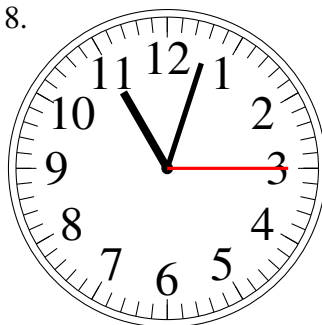
\_\_\_\_\_

7.



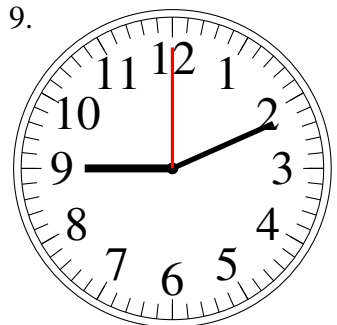
\_\_\_\_\_

8.



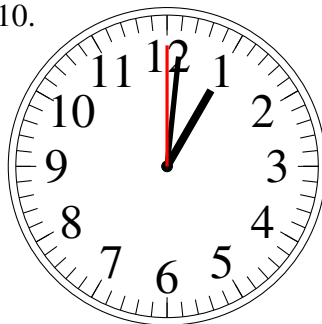
\_\_\_\_\_

9.



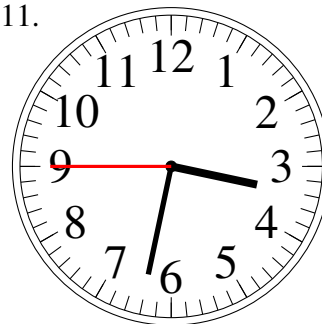
\_\_\_\_\_

10.



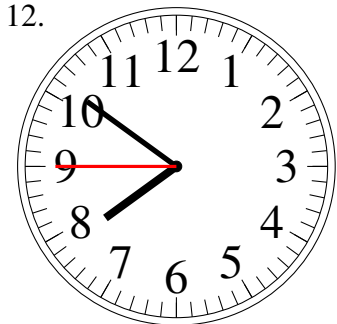
\_\_\_\_\_

11.



\_\_\_\_\_

12.

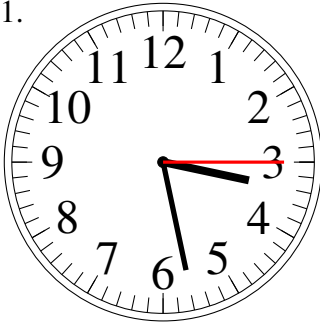


\_\_\_\_\_

# Lecture d'Horloge Analogue (J) Solutions

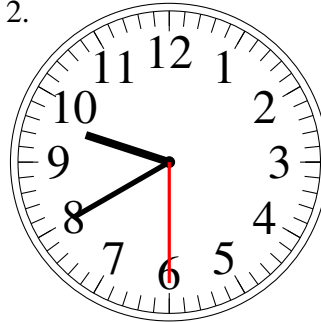
Lisez le temps indiqué et inscrivez le sous l'horloge.

1.



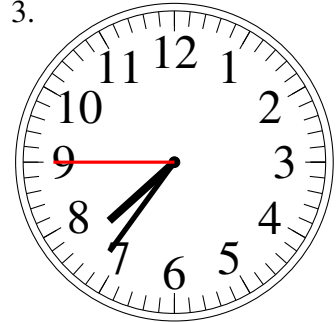
3:28.15

2.



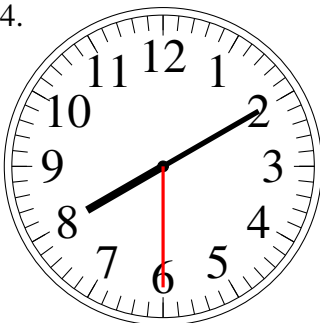
9:40.30

3.



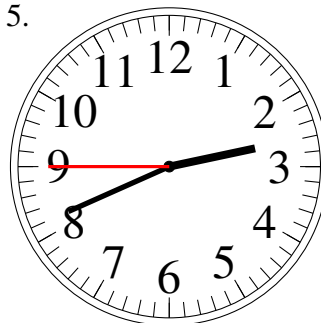
7:36.45

4.



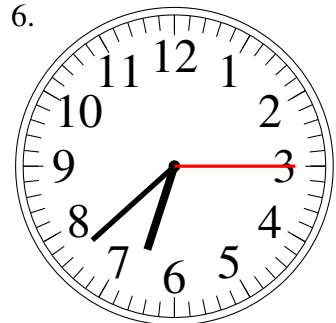
8:10.30

5.



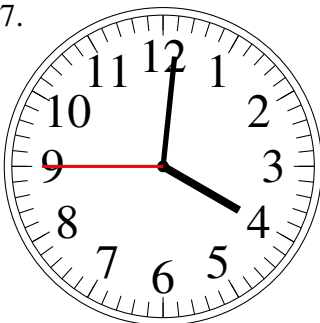
2:41.45

6.



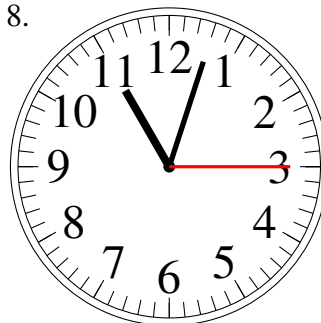
6:38.15

7.



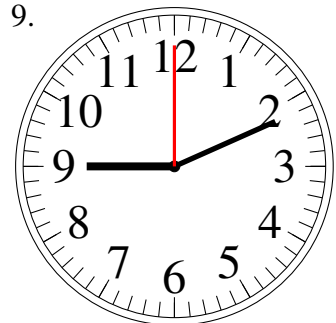
4:01.45

8.



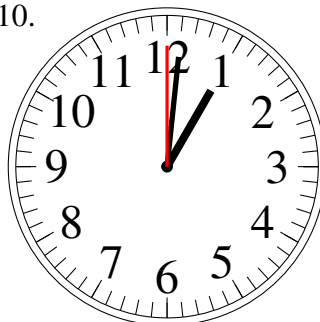
11:03.15

9.



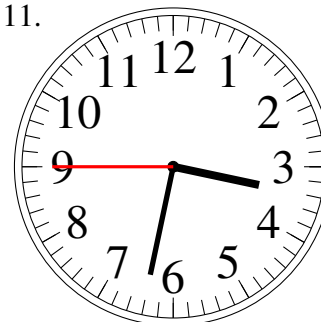
9:11.00

10.



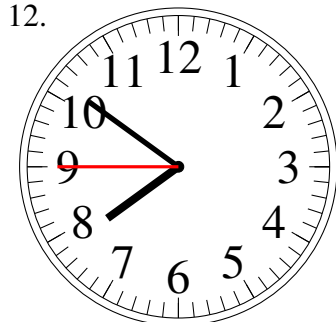
1:01.00

11.



3:32.45

12.



7:51.45