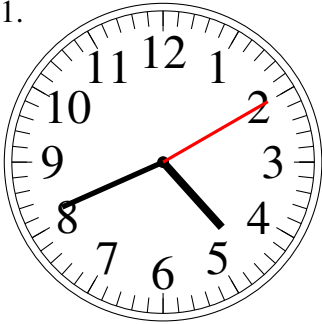


# Lecture d'Horloge Analogue (G)

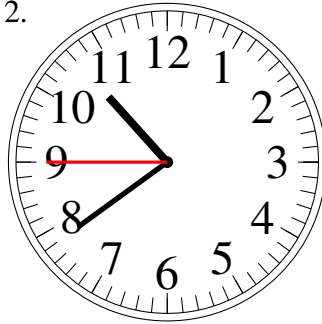
Lisez le temps indiqué et inscrivez le sous l'horloge.

1.



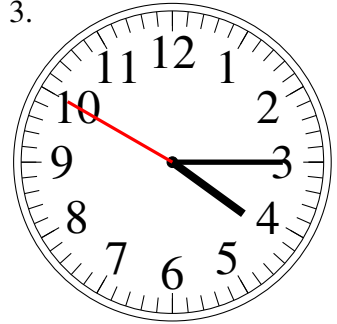
\_\_\_\_\_

2.



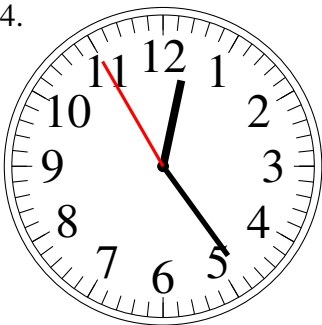
\_\_\_\_\_

3.



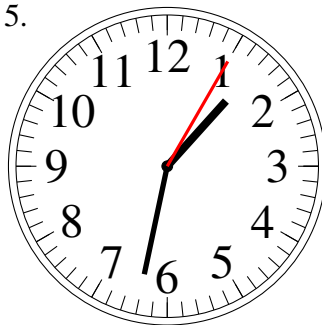
\_\_\_\_\_

4.



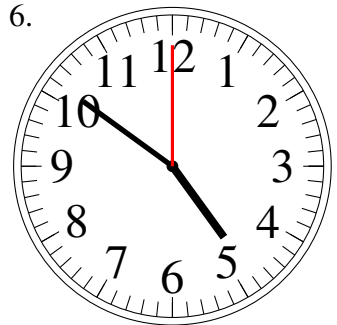
\_\_\_\_\_

5.



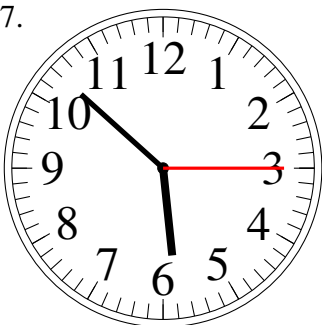
\_\_\_\_\_

6.



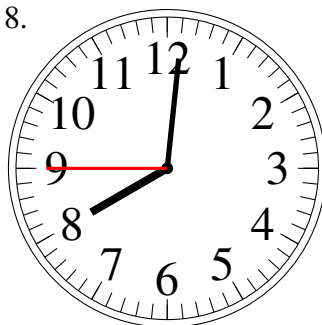
\_\_\_\_\_

7.



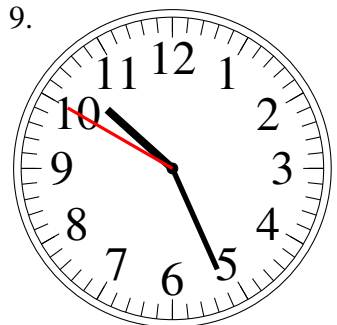
\_\_\_\_\_

8.



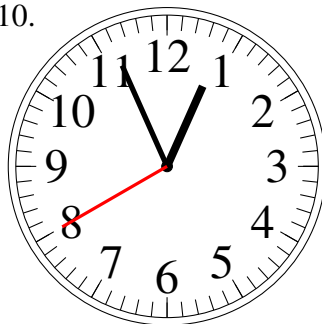
\_\_\_\_\_

9.



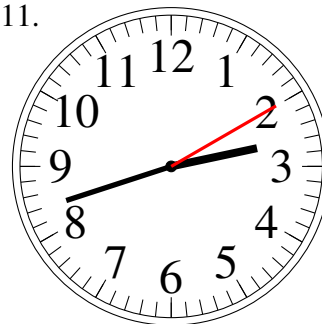
\_\_\_\_\_

10.



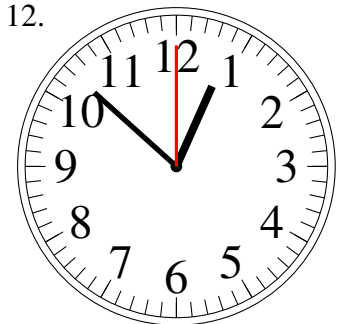
\_\_\_\_\_

11.



\_\_\_\_\_

12.

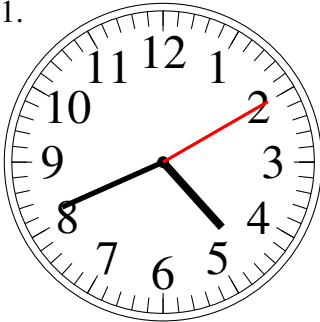


\_\_\_\_\_

# Lecture d'Horloge Analogue (G) Solutions

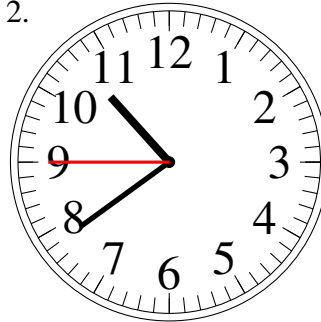
Lisez le temps indiqué et inscrivez le sous l'horloge.

1.



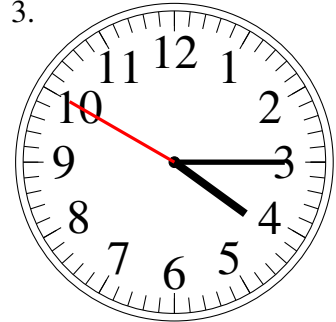
4:41.10

2.



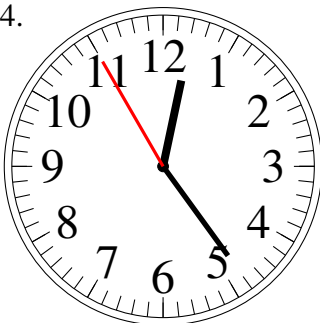
10:39.45

3.



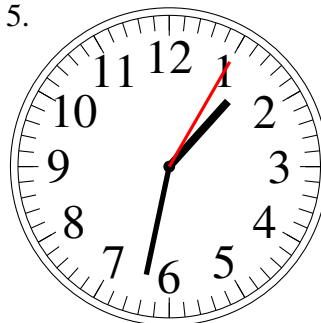
4:15.50

4.



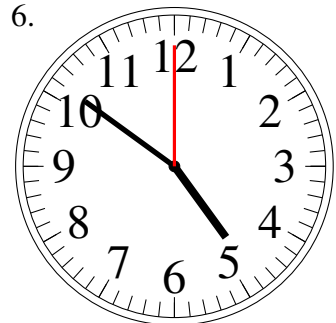
12:24.55

5.



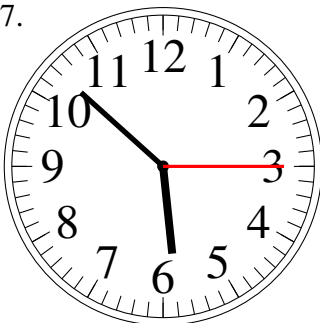
1:32.05

6.



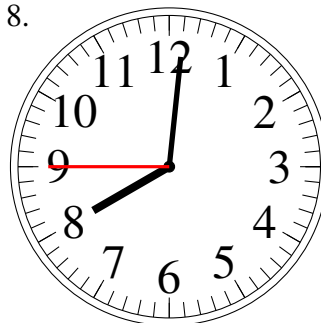
4:51.00

7.



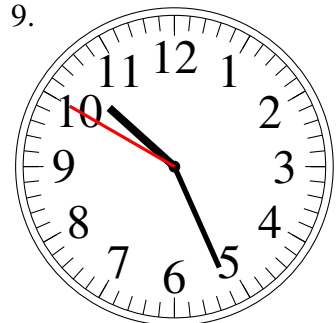
5:52.15

8.



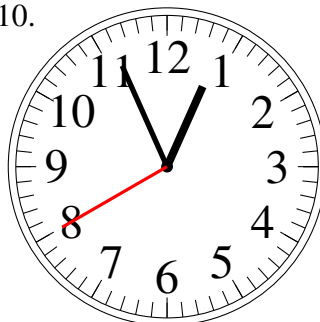
8:01.45

9.



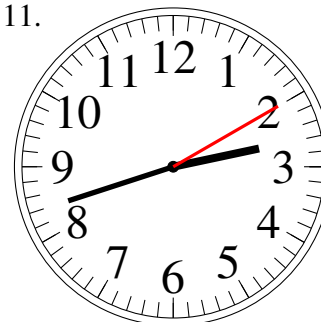
10:26.50

10.



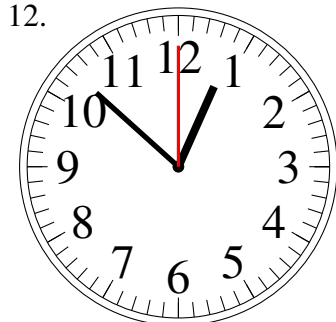
12:56.40

11.



2:42.10

12.



12:52.00