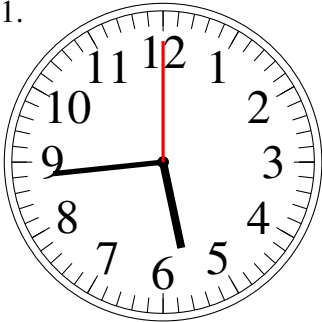


# Lecture d'Horloge Analogue (D)

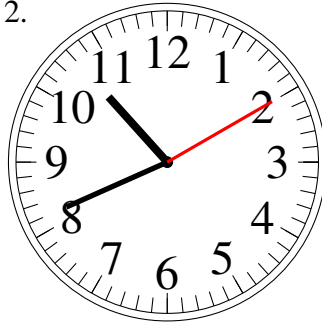
Lisez le temps indiqué et inscrivez le sous l'horloge.

1.



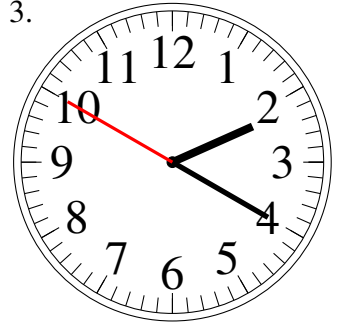
\_\_\_\_\_

2.



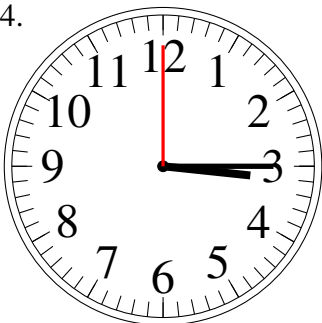
\_\_\_\_\_

3.



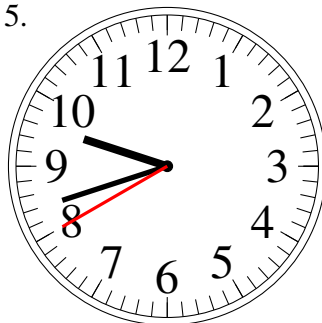
\_\_\_\_\_

4.



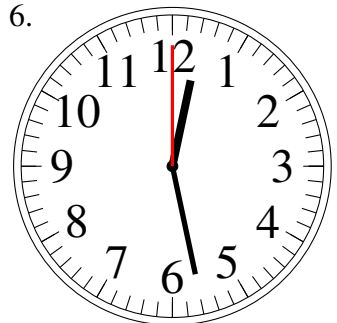
\_\_\_\_\_

5.



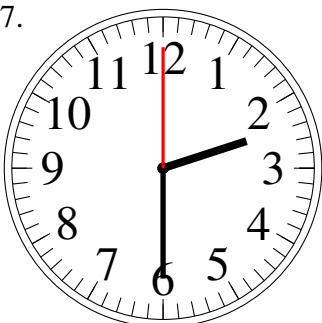
\_\_\_\_\_

6.



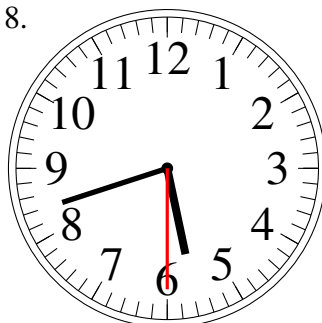
\_\_\_\_\_

7.



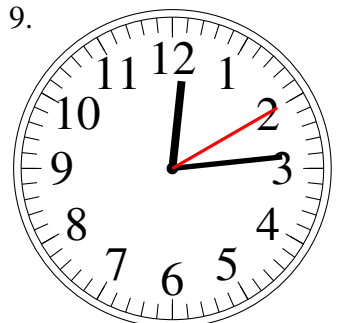
\_\_\_\_\_

8.



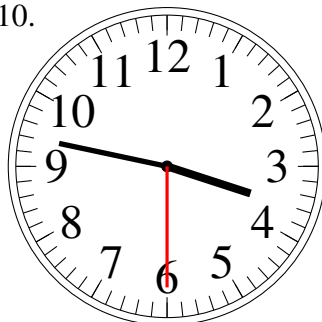
\_\_\_\_\_

9.



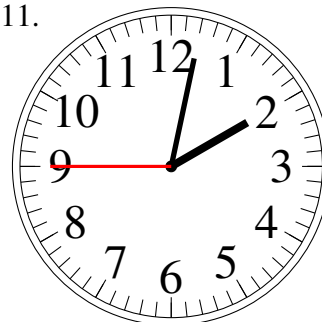
\_\_\_\_\_

10.



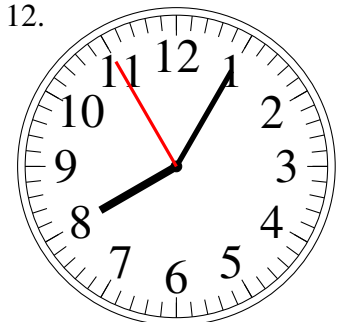
\_\_\_\_\_

11.



\_\_\_\_\_

12.

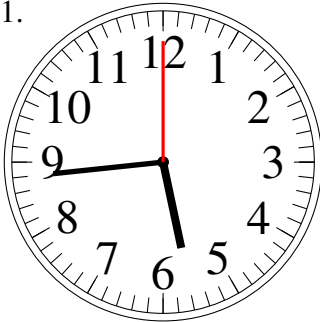


\_\_\_\_\_

# Lecture d'Horloge Analogue (D) Solutions

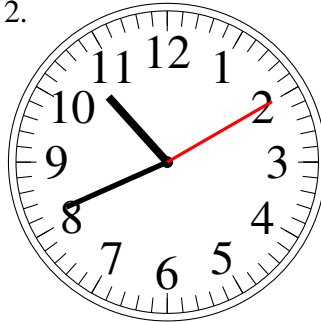
Lisez le temps indiqué et inscrivez le sous l'horloge.

1.



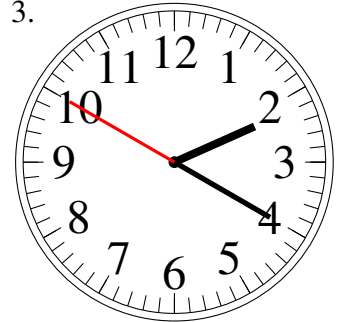
5:44.00

2.



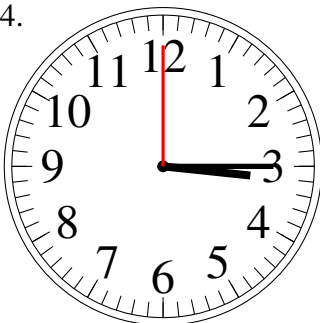
10:41.10

3.



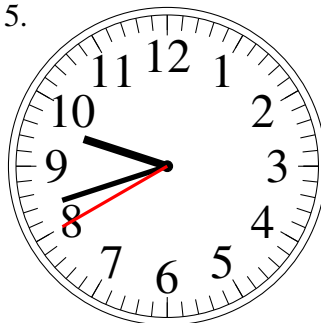
2:20.50

4.



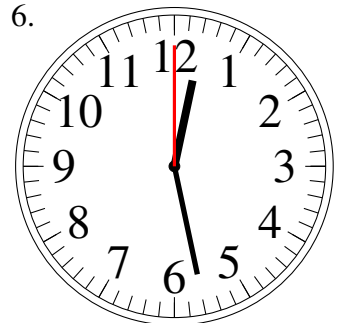
3:15.00

5.



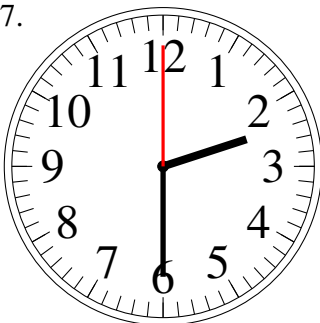
9:42.40

6.



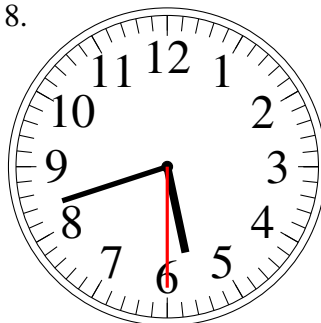
12:28.00

7.



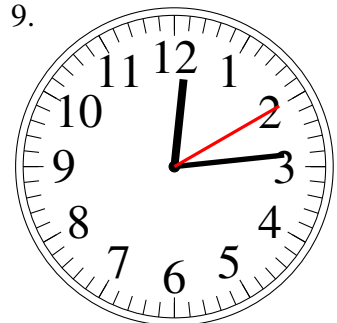
2:30.00

8.



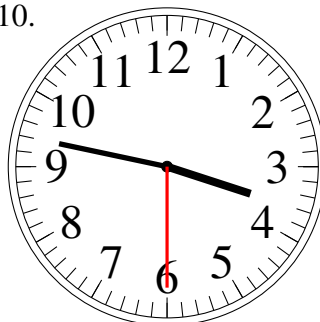
5:42.30

9.



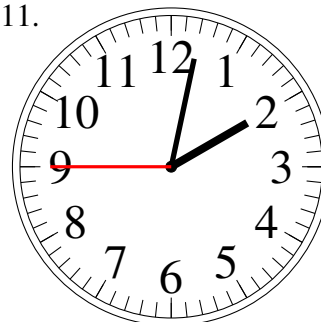
12:14.10

10.



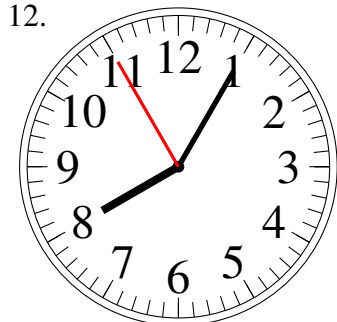
3:47.30

11.



2:02.45

12.



8:05.55