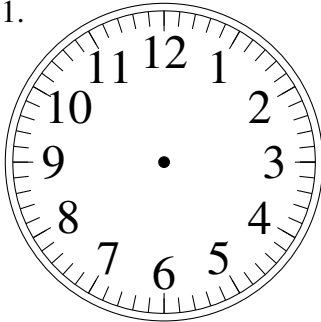


# Esquisse d'Horloges Analogues (I)

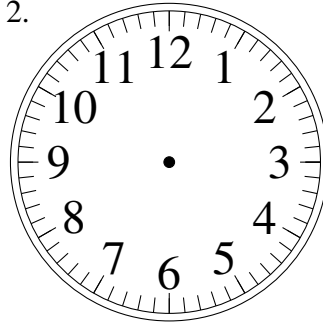
Dessiner les aiguilles de l'horloge pour qu'elles montrent le temps indiqué.

1.



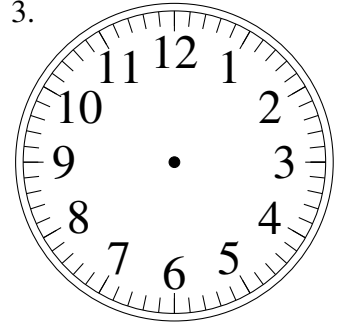
9:00

2.



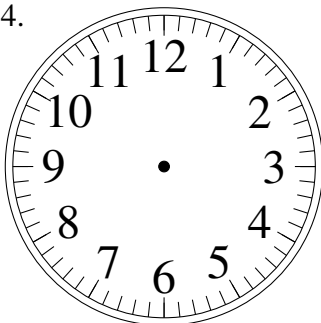
8:15

3.



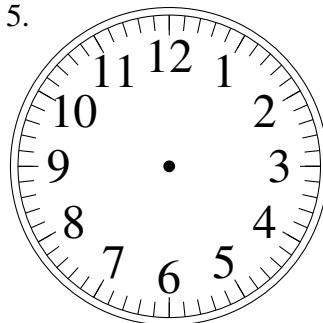
12:15

4.



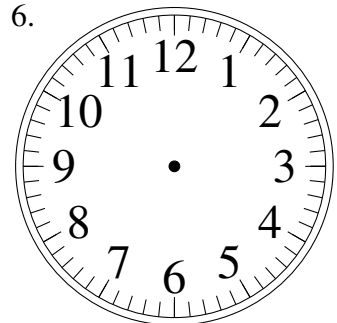
9:45

5.



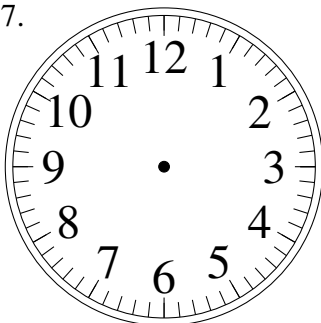
2:15

6.



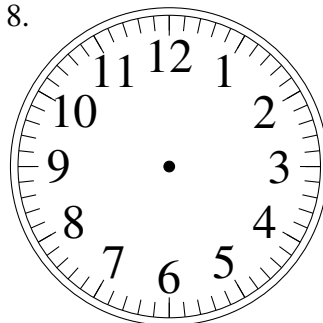
7:00

7.



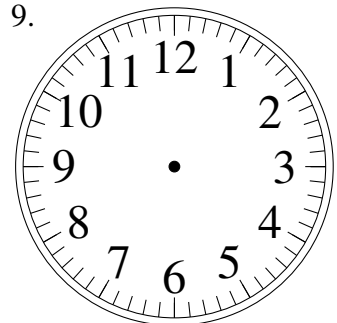
1:15

8.



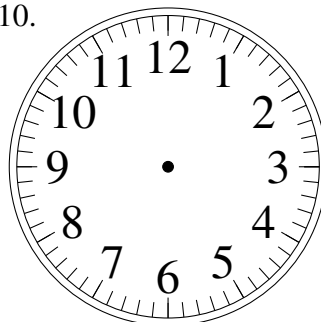
2:45

9.



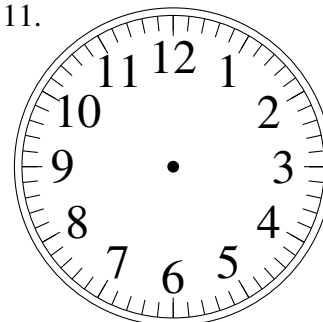
5:45

10.



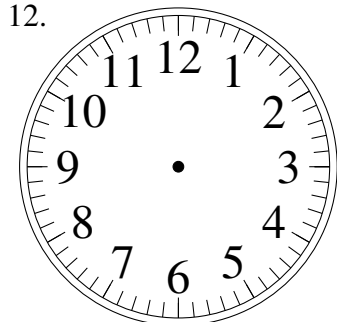
5:30

11.



3:30

12.

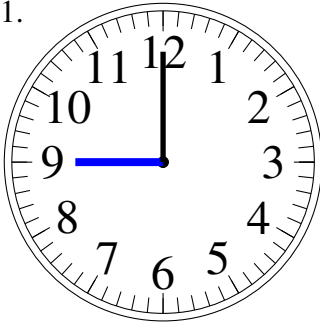


9:00

# Esquisse d'Horloges Analogues (I) Solutions

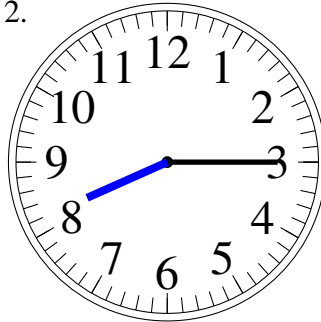
Dessiner les aiguilles de l'horloge pour qu'elles montrent le temps indiqué.

1.



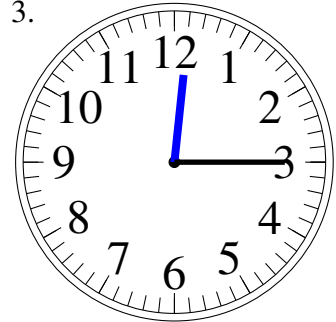
9:00

2.



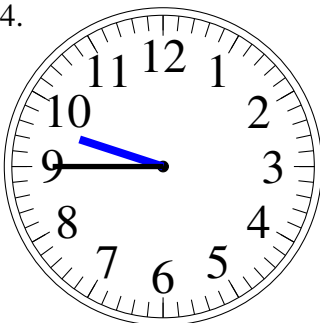
8:15

3.



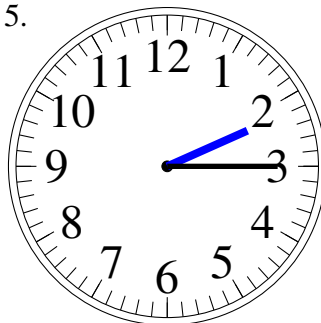
12:15

4.



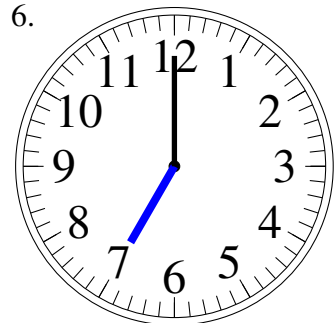
9:45

5.



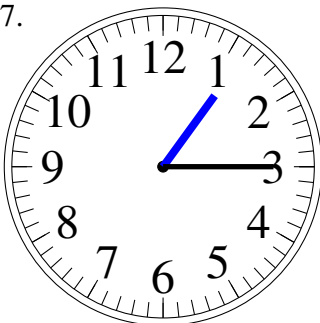
2:15

6.



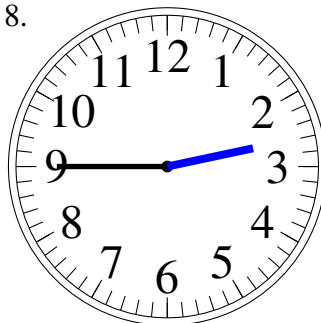
7:00

7.



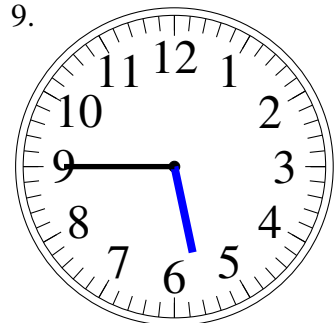
1:15

8.



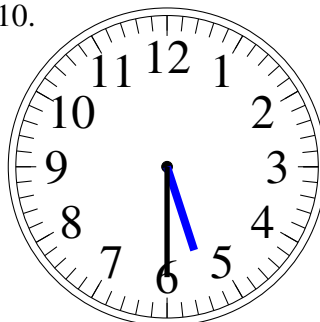
2:45

9.



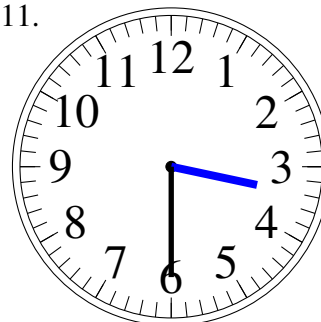
5:45

10.



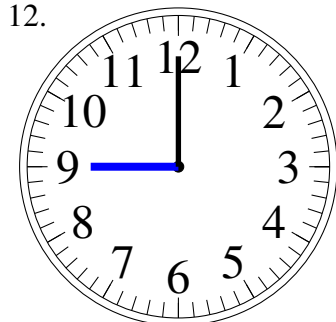
5:30

11.



3:30

12.



9:00