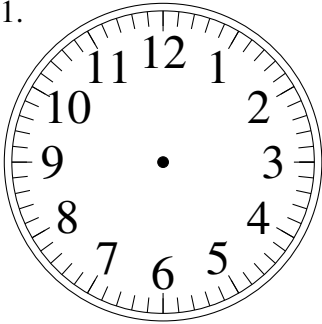


Esquisse d'Horloges Analogues (J)

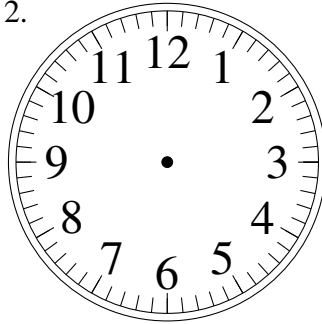
Dessiner les aiguilles de l'horloge pour qu'elles montrent le temps indiqué.

1.



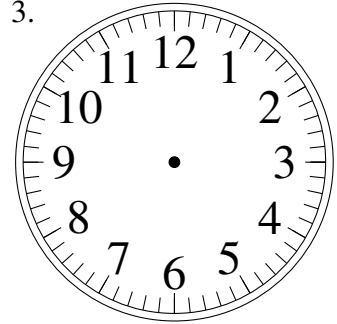
12:35

2.



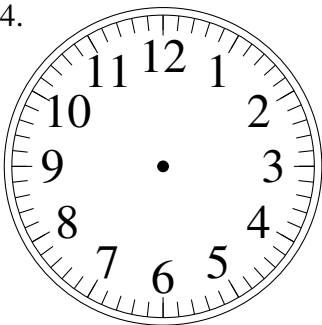
3:20

3.



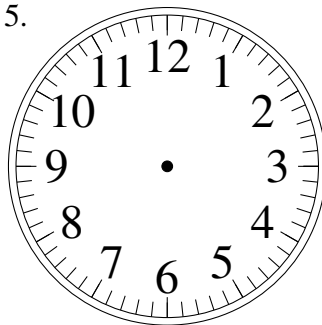
9:40

4.



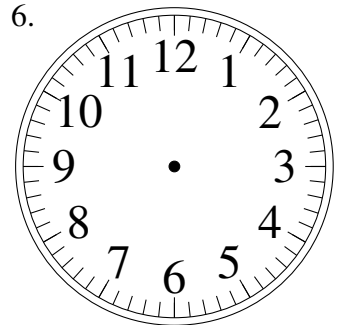
12:55

5.



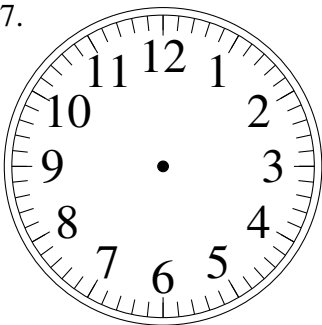
10:40

6.



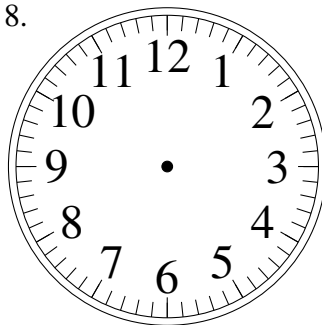
9:30

7.



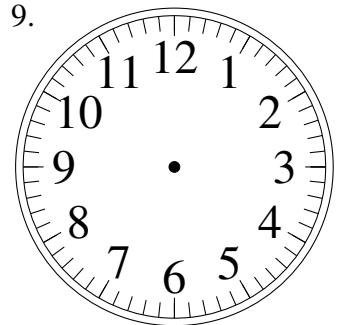
2:10

8.



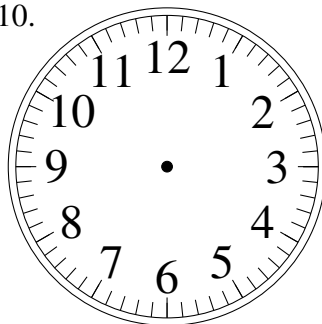
8:05

9.



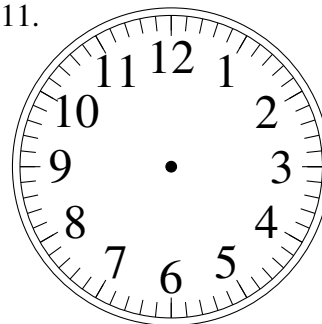
3:05

10.



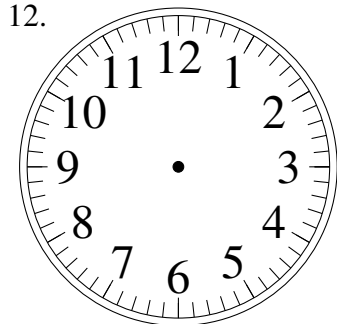
4:00

11.



7:50

12.

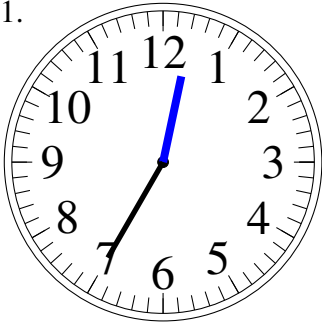


5:10

Esquisse d'Horloges Analogues (J) Solutions

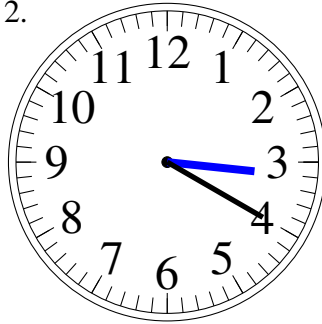
Dessiner les aiguilles de l'horloge pour qu'elles montrent le temps indiqué.

1.



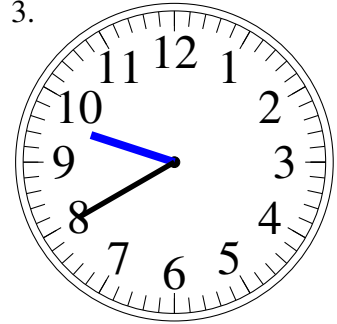
12:35

2.



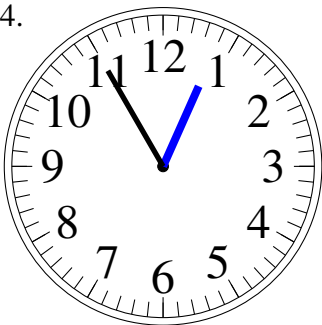
3:20

3.



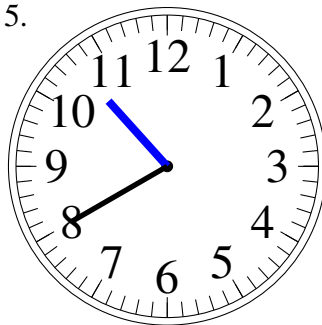
9:40

4.



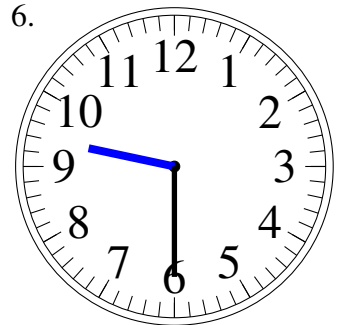
12:55

5.



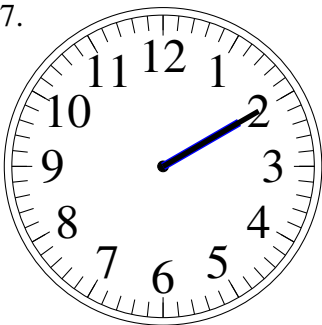
10:40

6.



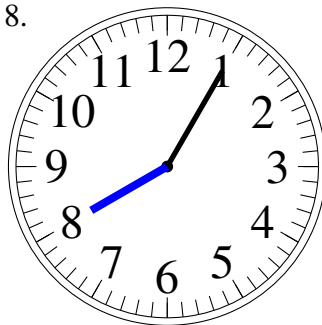
9:30

7.



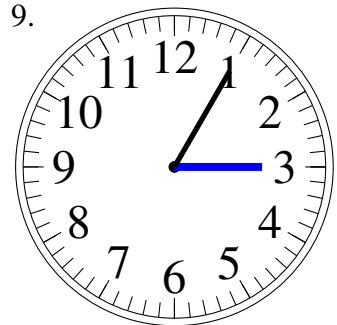
2:10

8.



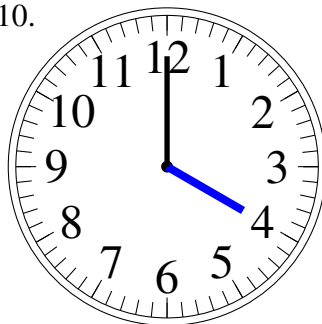
8:05

9.



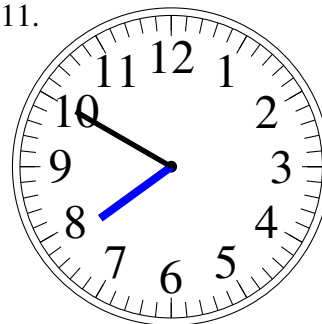
3:05

10.



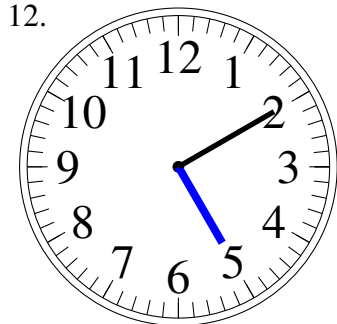
4:00

11.



7:50

12.



5:10