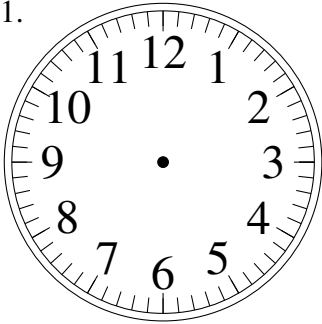


# Esquisse d'Horloges Analogues (H)

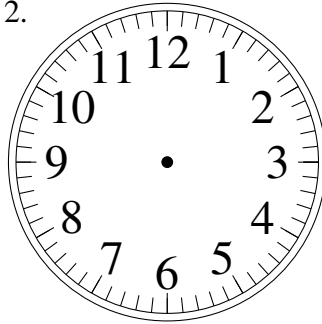
Dessiner les aiguilles de l'horloge pour qu'elles montrent le temps indiqué.

1.



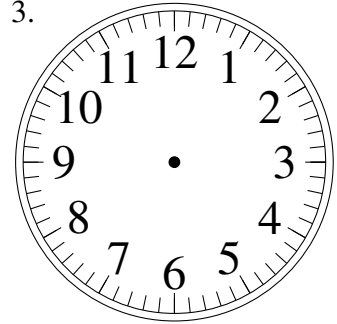
9:45

2.



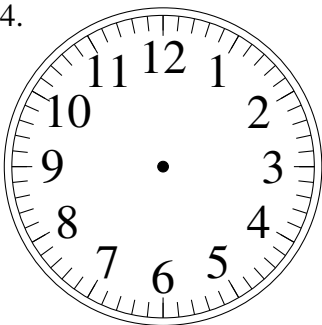
5:35

3.



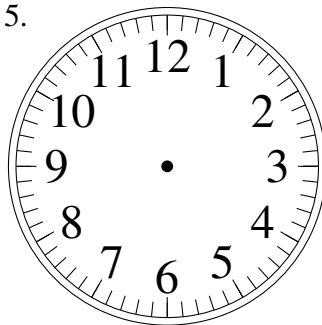
9:20

4.



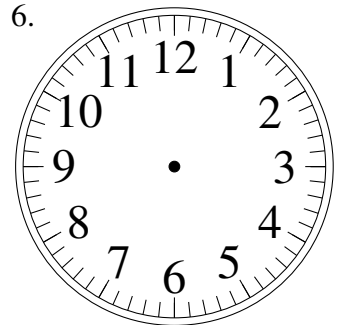
6:40

5.



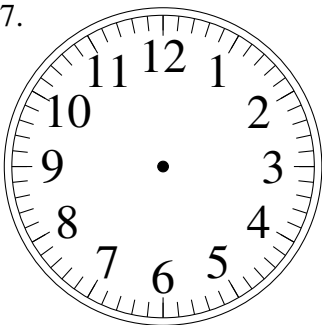
8:50

6.



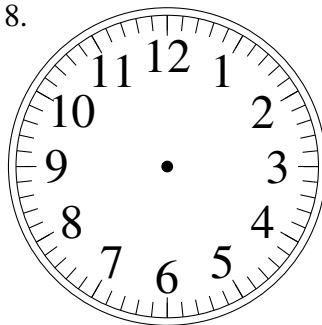
2:15

7.



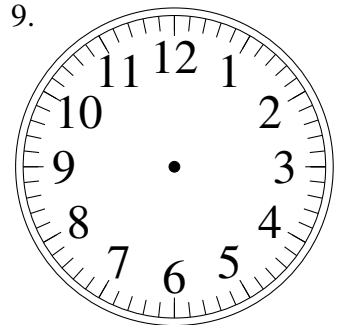
11:15

8.



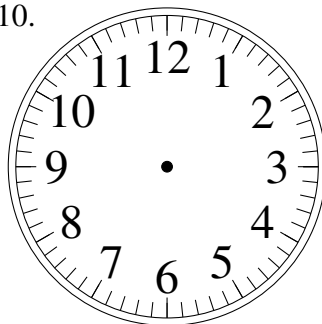
4:55

9.



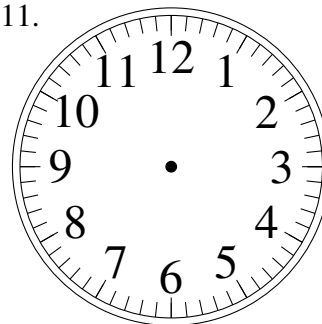
12:35

10.



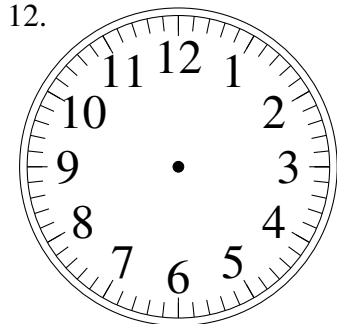
4:05

11.



10:45

12.

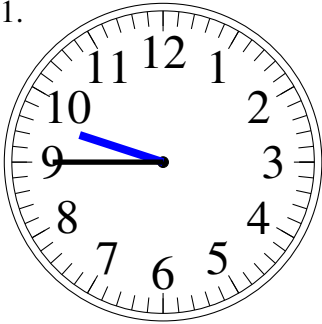


6:00

# Esquisse d'Horloges Analogues (H) Solutions

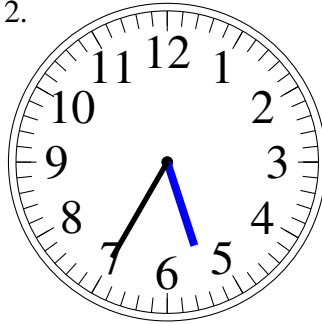
Dessiner les aiguilles de l'horloge pour qu'elles montrent le temps indiqué.

1.



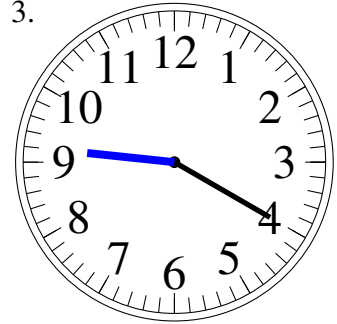
9:45

2.



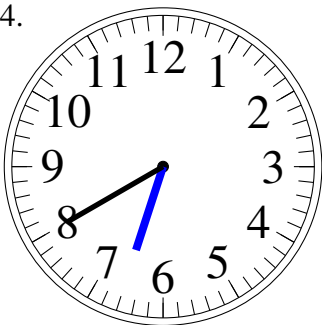
5:35

3.



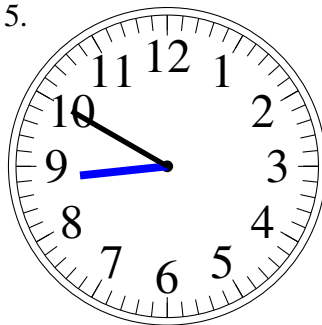
9:20

4.



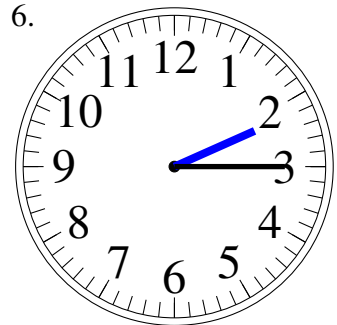
6:40

5.



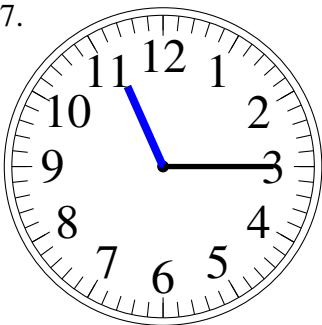
8:50

6.



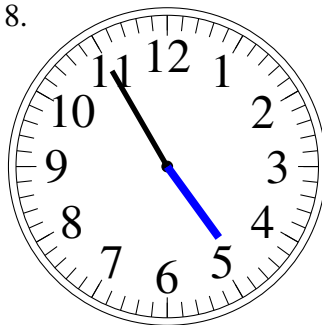
2:15

7.



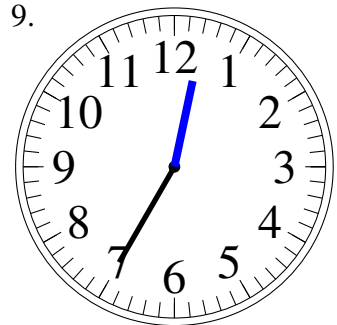
11:15

8.



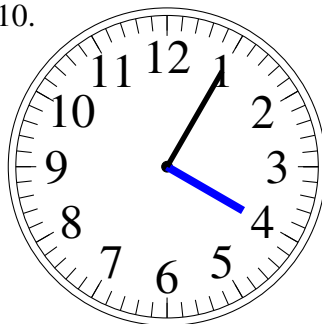
4:55

9.



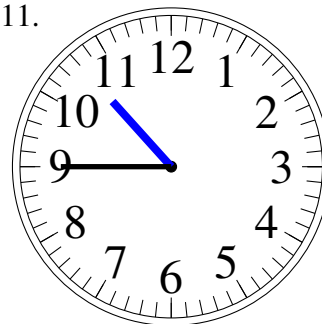
12:35

10.



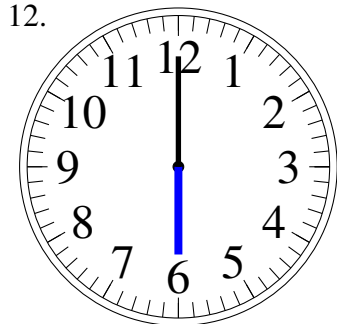
4:05

11.



10:45

12.



6:00