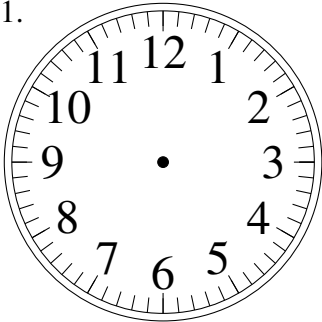


Esquisse d'Horloges Analogues (F)

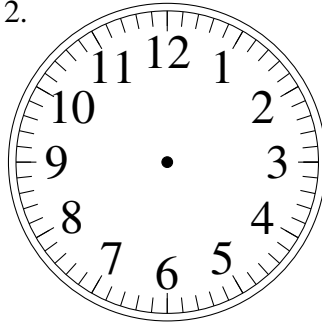
Dessiner les aiguilles de l'horloge pour qu'elles montrent le temps indiqué.

1.



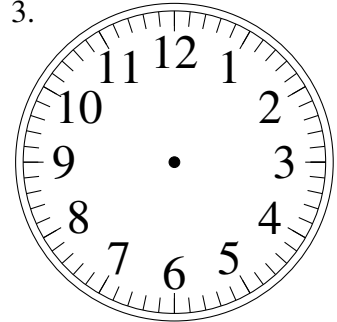
12:20

2.



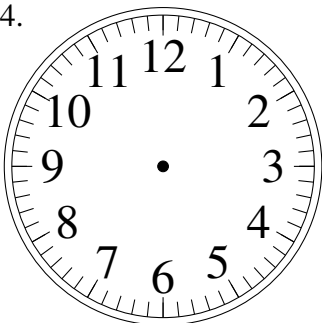
10:05

3.



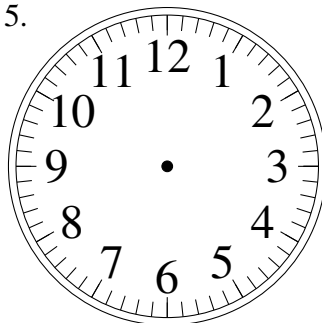
7:15

4.



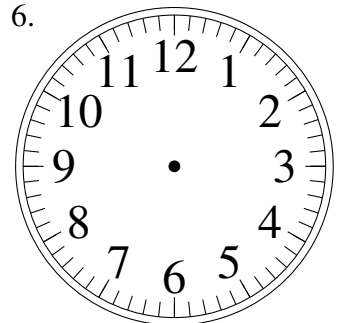
12:45

5.



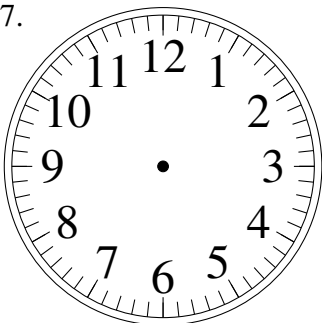
8:40

6.



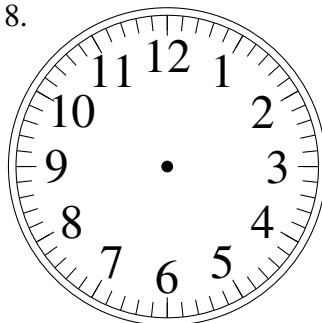
10:55

7.



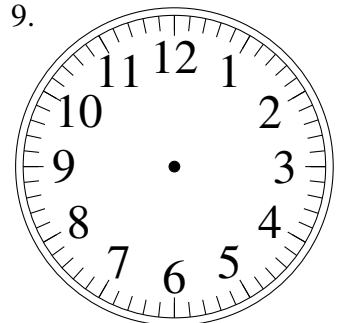
6:25

8.



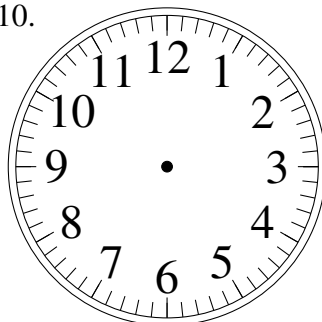
11:40

9.



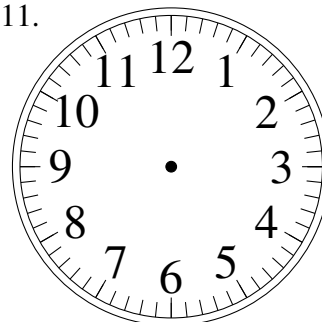
10:00

10.



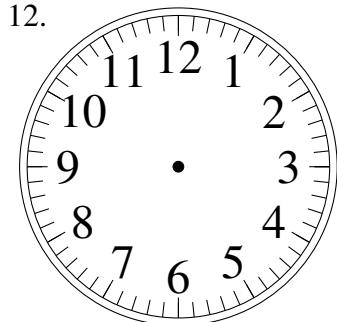
3:25

11.



8:35

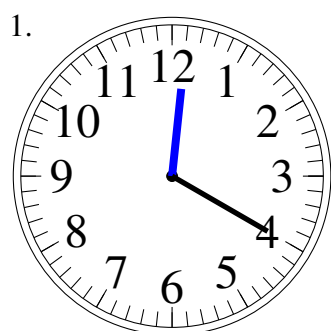
12.



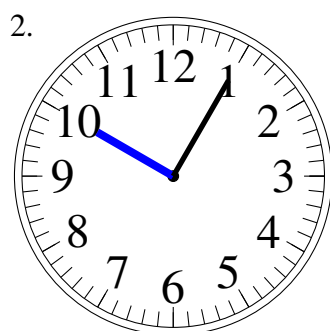
10:20

Esquisse d'Horloges Analogues (F) Solutions

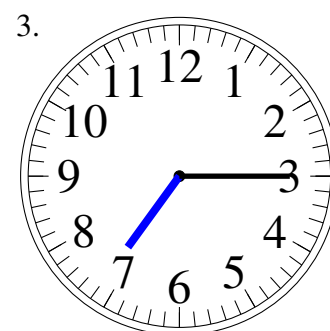
Dessiner les aiguilles de l'horloge pour qu'elles montrent le temps indiqué.



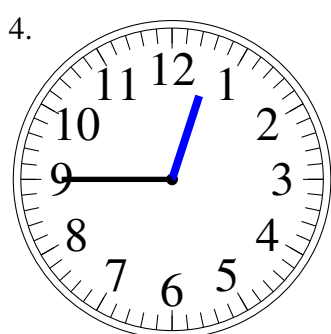
12:20



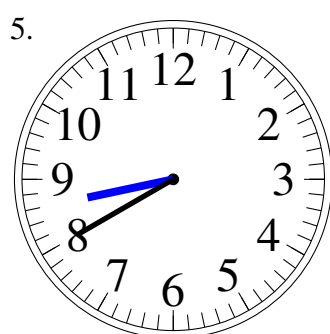
10:05



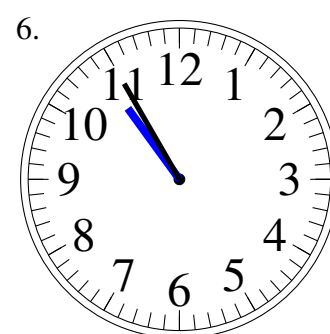
7:15



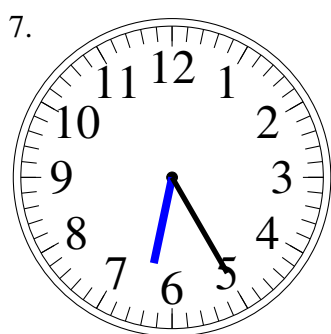
12:45



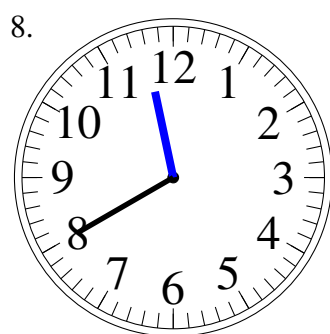
8:40



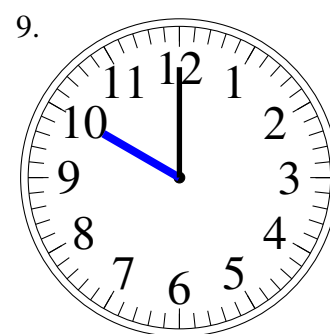
10:55



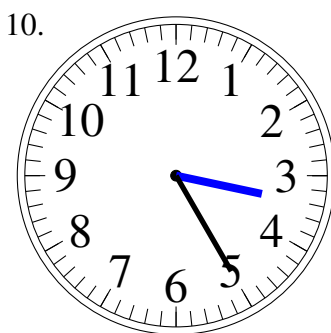
6:25



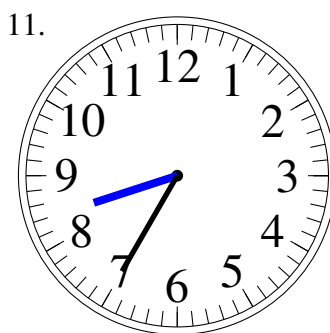
11:40



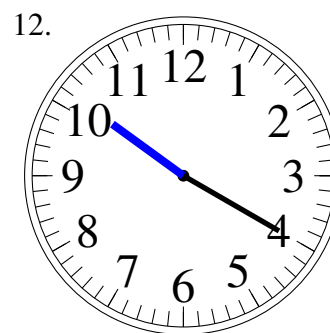
10:00



3:25



8:35



10:20