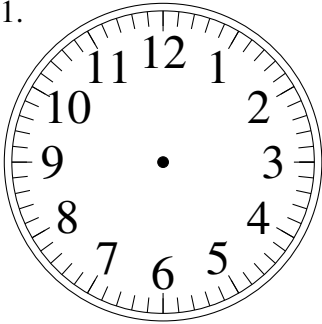


## Esquisse d'Horloges Analogues (C)

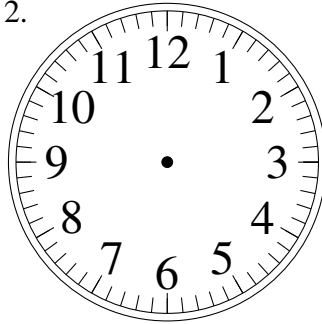
Dessiner les aiguilles de l'horloge pour qu'elles montrent le temps indiqué.

1.



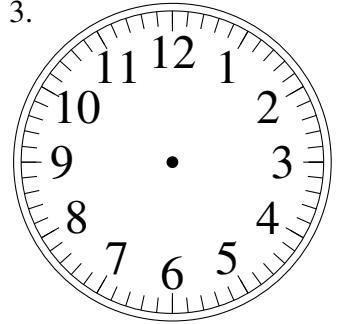
8:55

2.



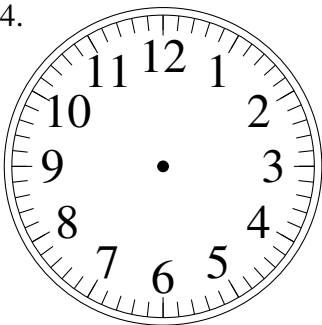
9:35

3.



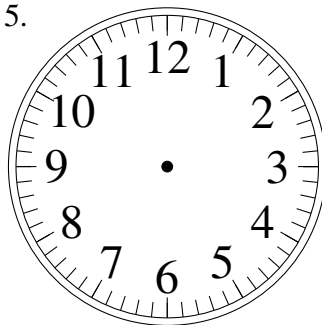
7:15

4.



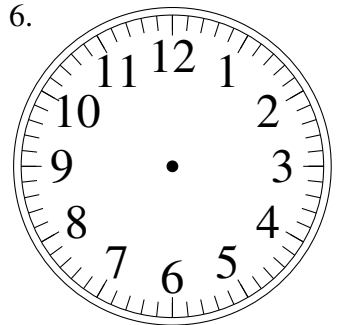
10:05

5.



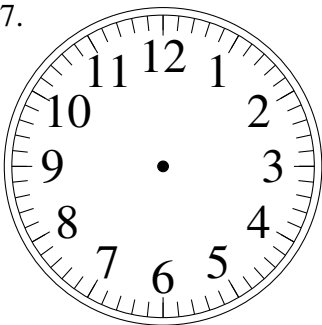
12:40

6.



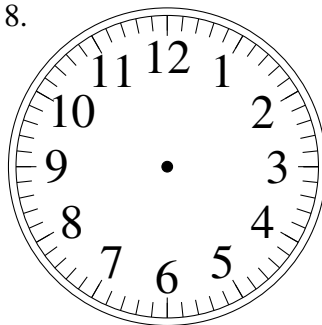
7:05

7.



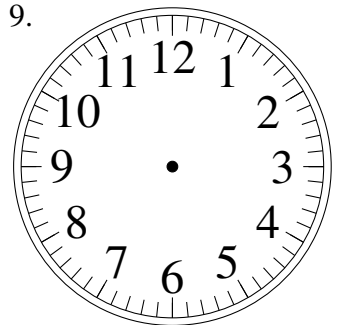
1:40

8.



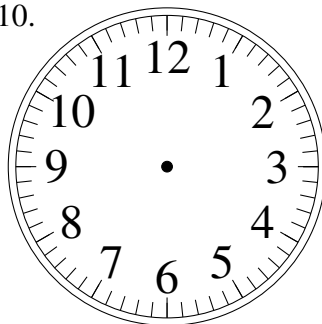
11:20

9.



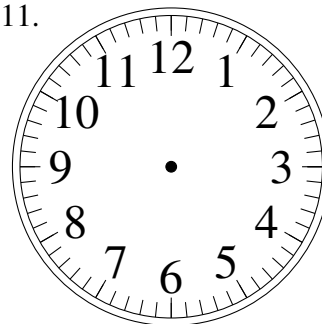
7:35

10.



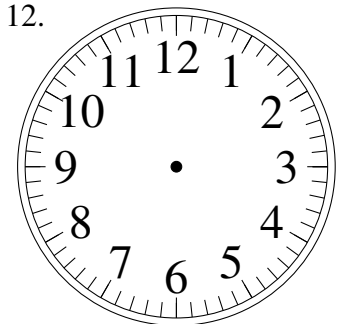
1:40

11.



4:55

12.

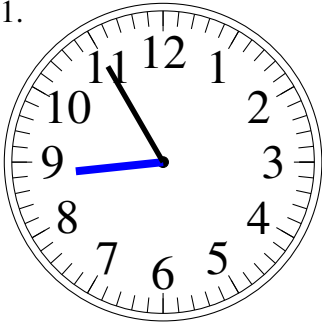


1:15

# Esquisse d'Horloges Analogues (C) Solutions

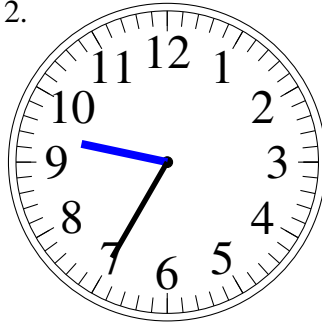
Dessiner les aiguilles de l'horloge pour qu'elles montrent le temps indiqué.

1.



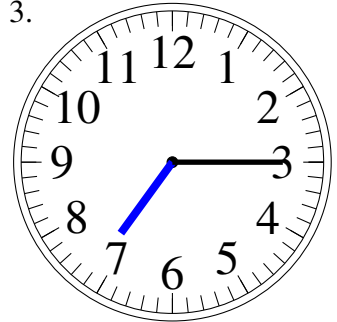
8:55

2.



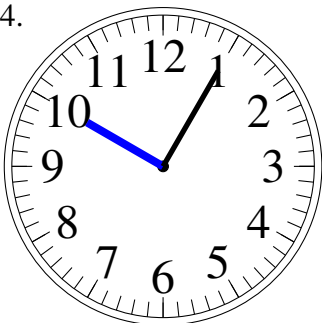
9:35

3.



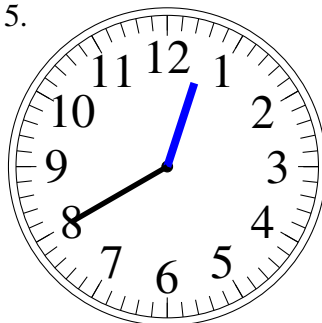
7:15

4.



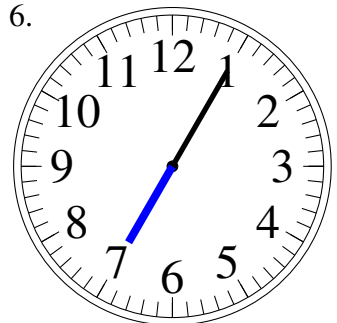
10:05

5.



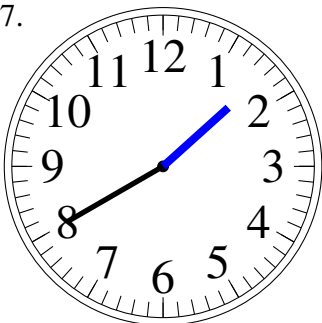
12:40

6.



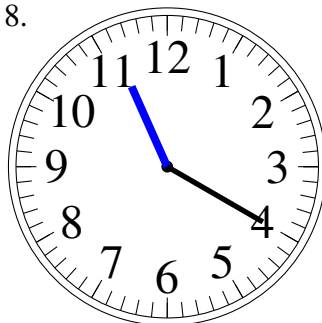
7:05

7.



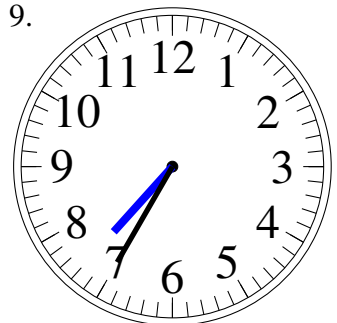
1:40

8.



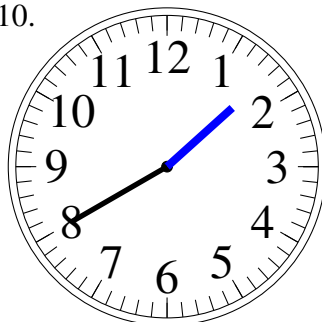
11:20

9.



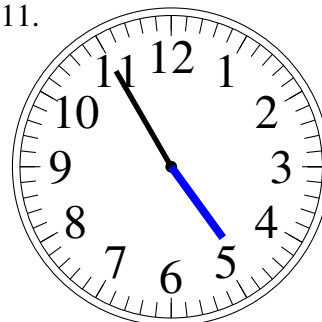
7:35

10.



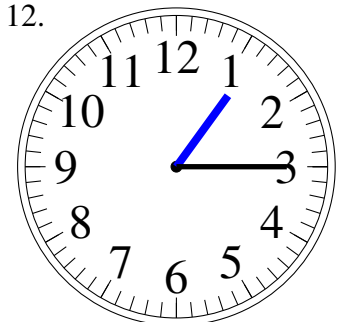
1:40

11.



4:55

12.



1:15