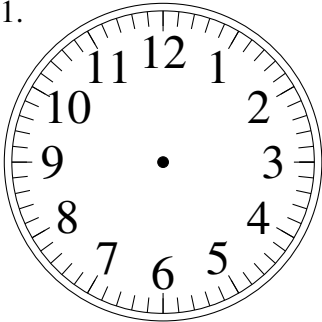


# Esquisse d'Horloges Analogues (F)

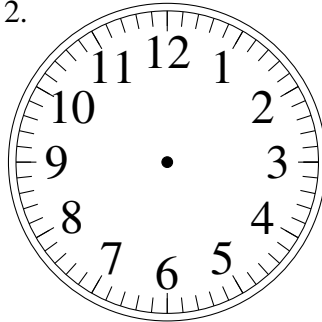
Dessiner les aiguilles de l'horloge pour qu'elles montrent le temps indiqué.

1.



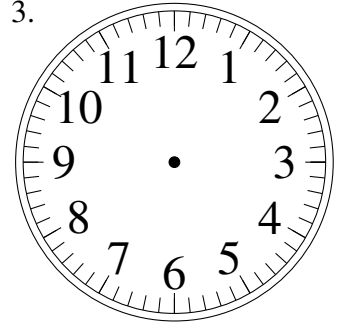
12:10

2.



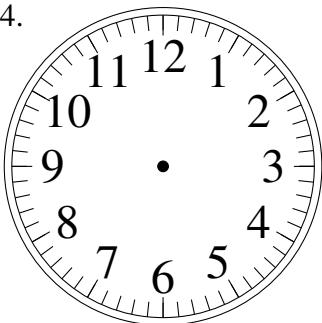
10:20

3.



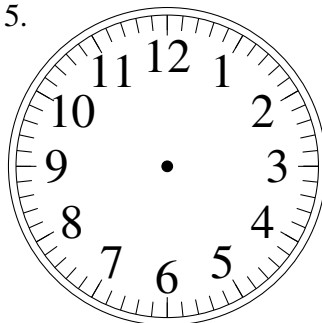
11:14

4.



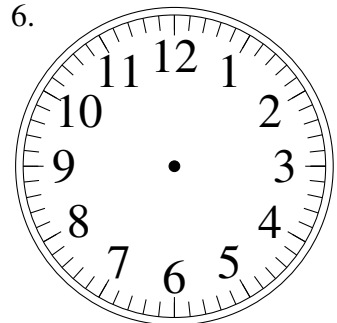
6:41

5.



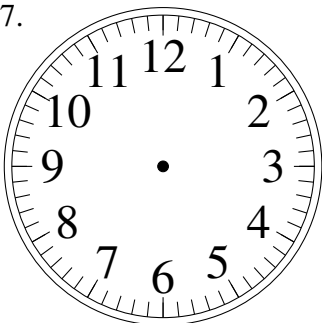
11:51

6.



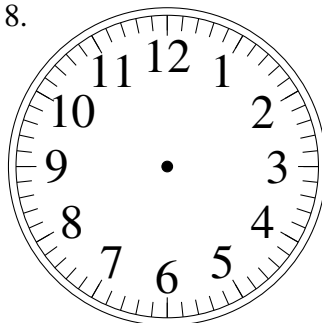
11:32

7.



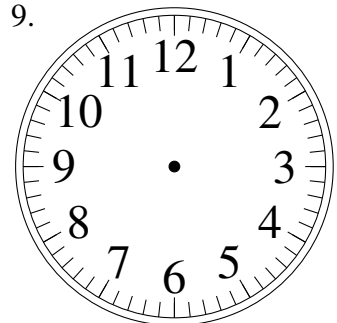
8:47

8.



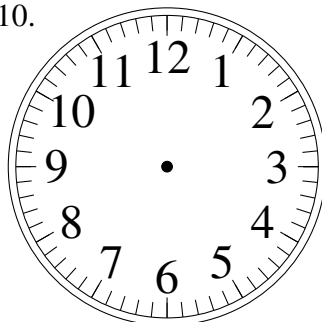
3:35

9.



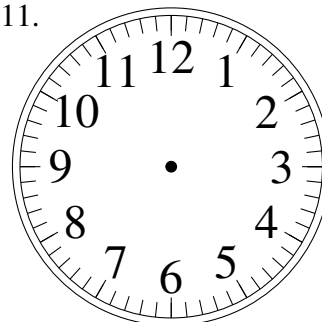
8:56

10.



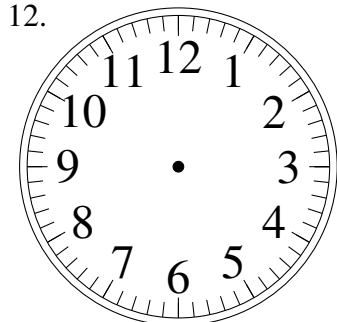
2:42

11.



6:39

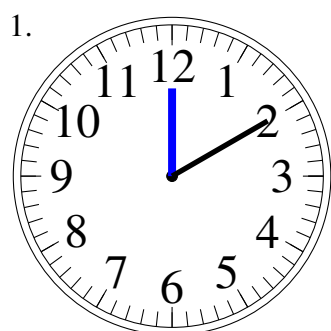
12.



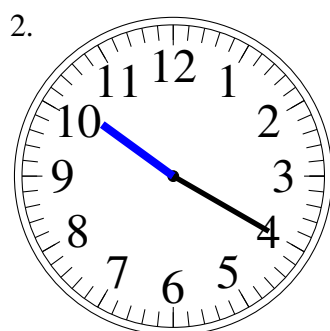
5:01

# Esquisse d'Horloges Analogues (F) Solutions

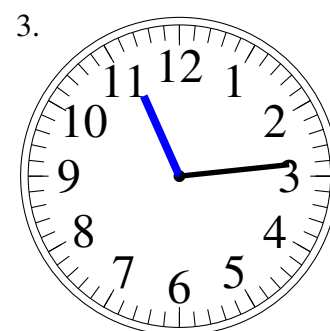
Dessiner les aiguilles de l'horloge pour qu'elles montrent le temps indiqué.



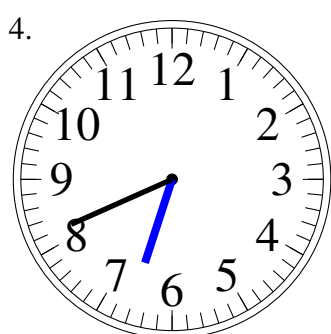
12:10



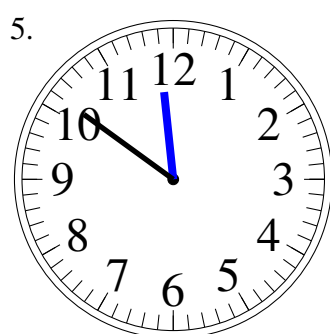
10:20



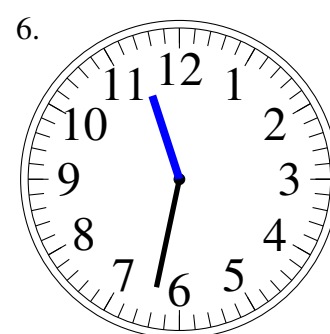
11:14



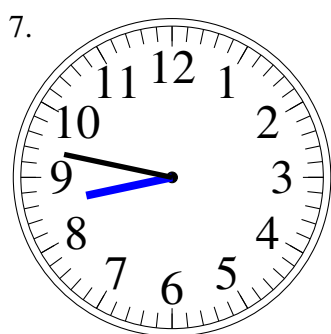
6:41



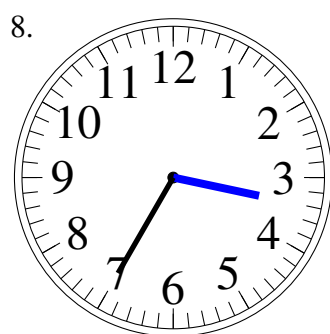
11:51



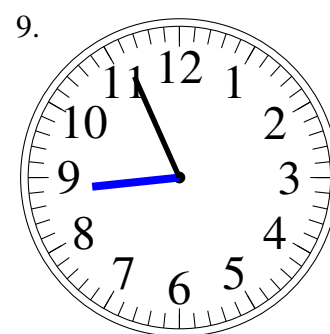
11:32



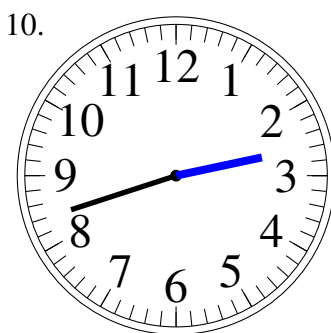
8:47



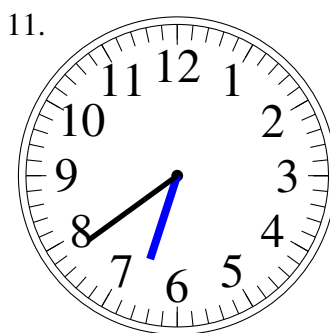
3:35



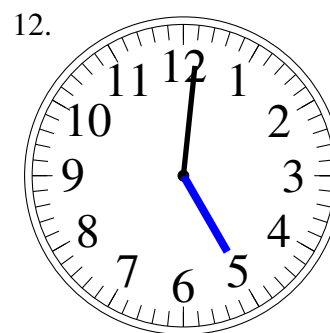
8:56



2:42



6:39



5:01