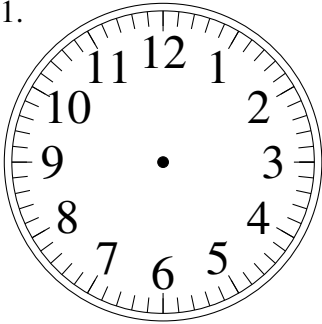


Esquisse d'Horloges Analogues (B)

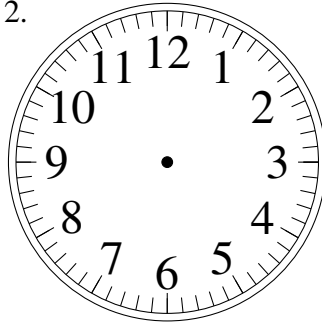
Dessiner les aiguilles de l'horloge pour qu'elles montrent le temps indiqué.

1.



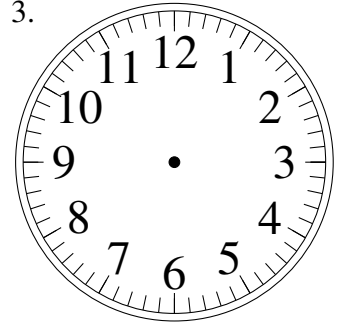
1:10

2.



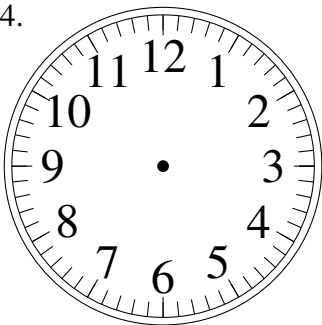
8:11

3.



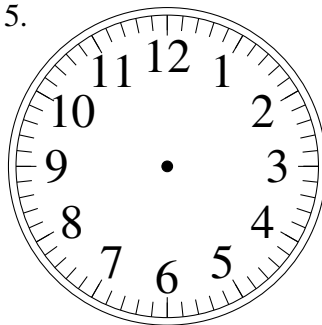
1:29

4.



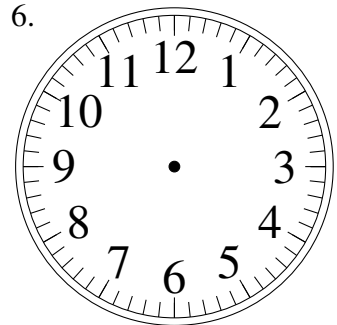
12:39

5.



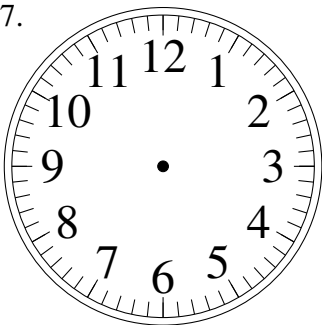
4:47

6.



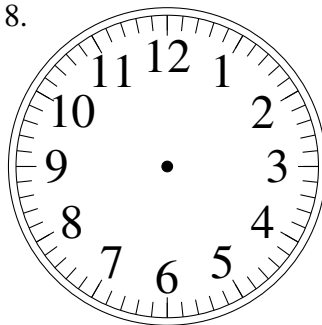
5:36

7.



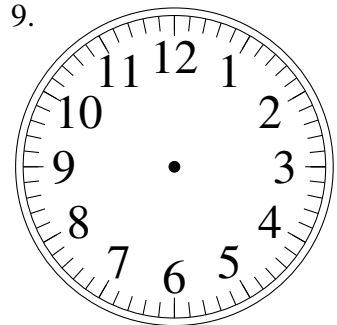
1:29

8.



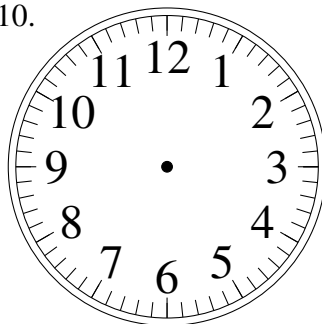
10:37

9.



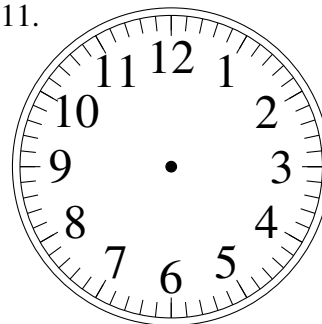
11:02

10.



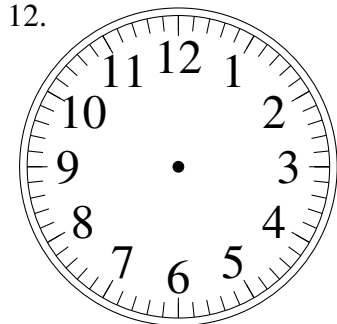
10:09

11.



6:40

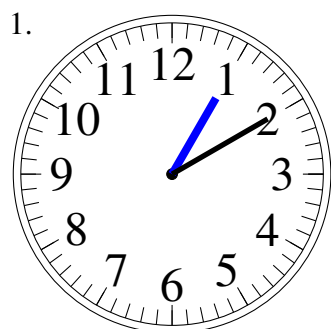
12.



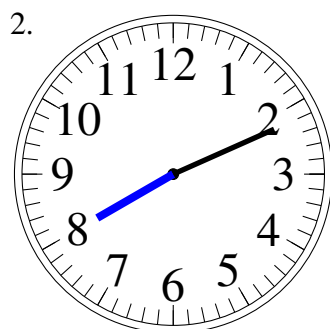
2:37

Esquisse d'Horloges Analogues (B) Solutions

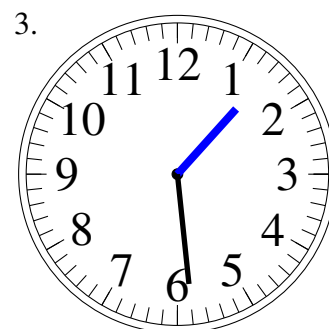
Dessiner les aiguilles de l'horloge pour qu'elles montrent le temps indiqué.



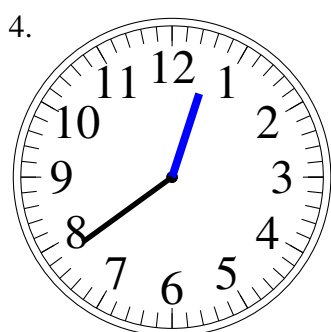
1:10



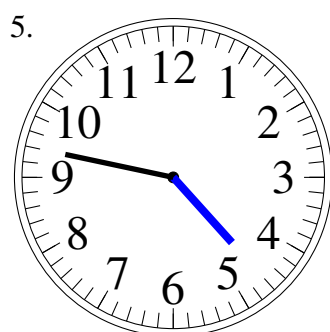
8:11



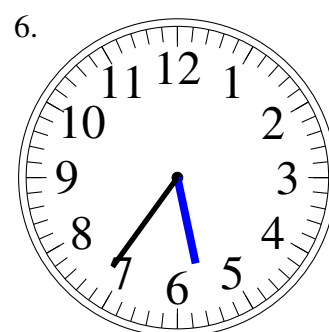
1:29



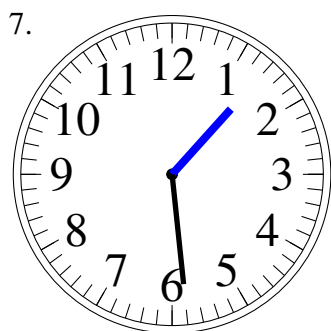
12:39



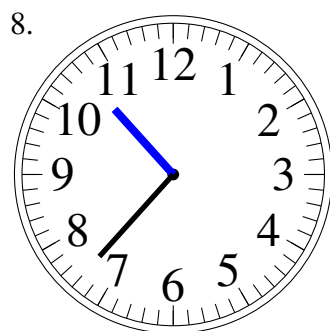
4:47



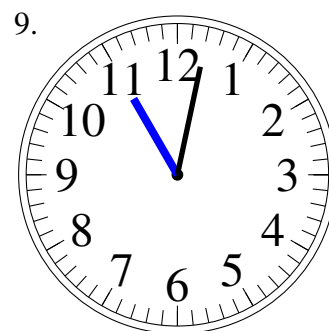
5:36



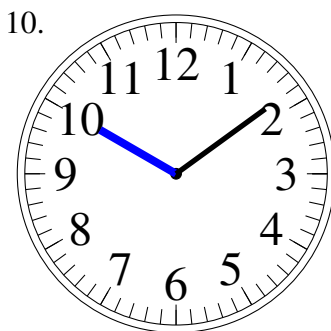
1:29



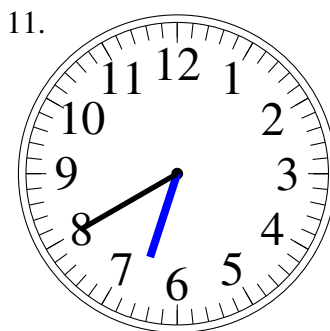
10:37



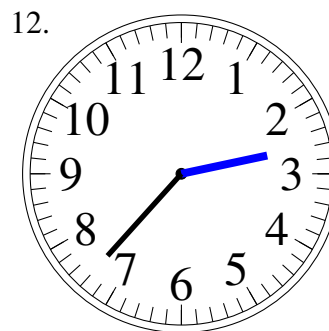
11:02



10:09



6:40



2:37