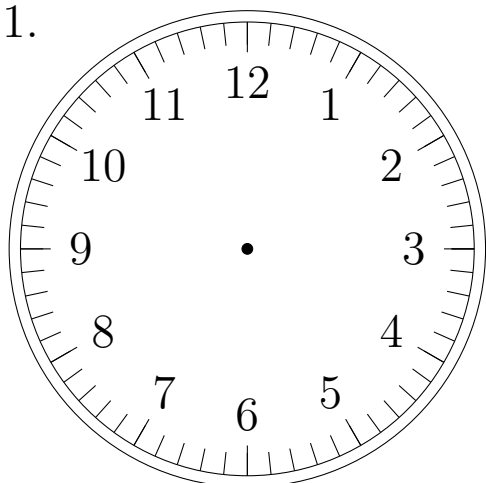


## Place d'Aiguilles sur une Horloge Analogique (E)

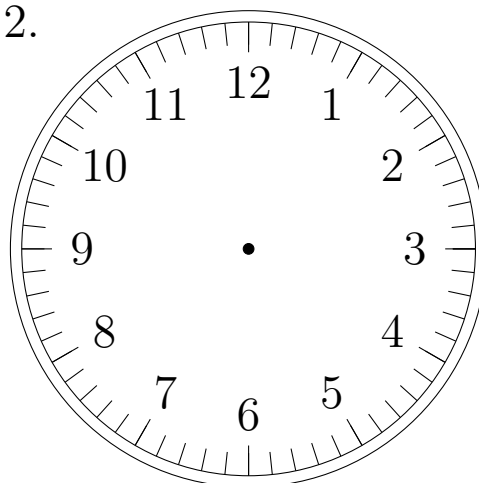
Placer les aiguilles de l'horloge pour qu'elles montrent le temps indiqué.

1.



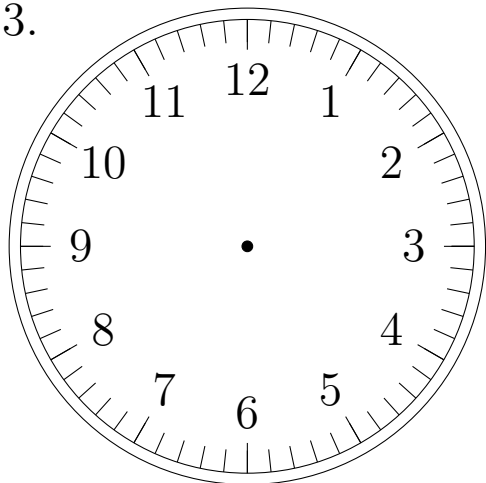
6:00:00

2.



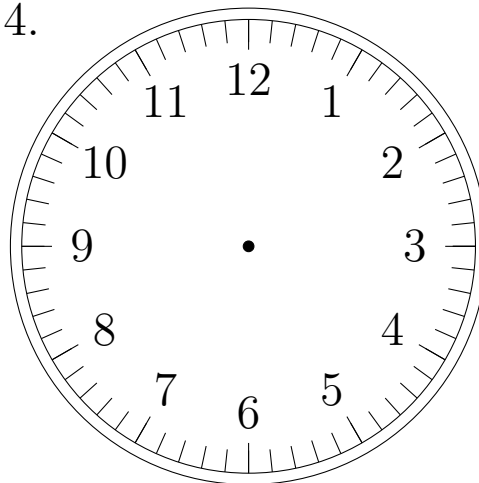
9:00:00

3.



10:00:00

4.

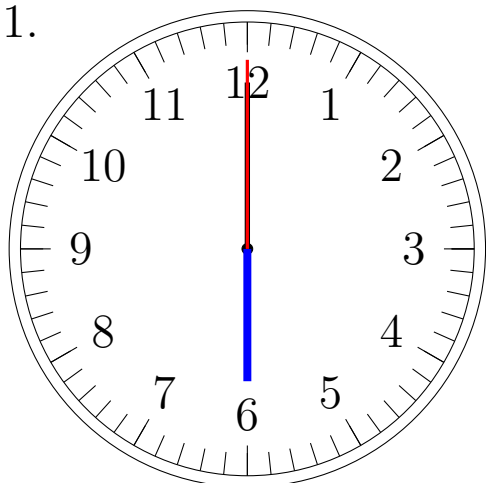


4:00:00

# Place d'Aiguilles sur une Horloge Analogique (E) Solutions

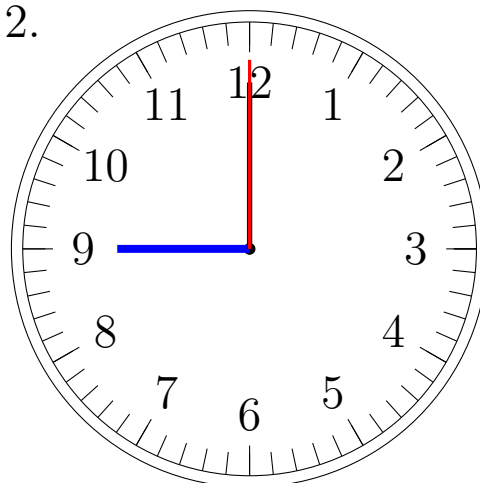
Placer les aiguilles de l'horloge pour qu'elles montrent le temps indiqué.

1.



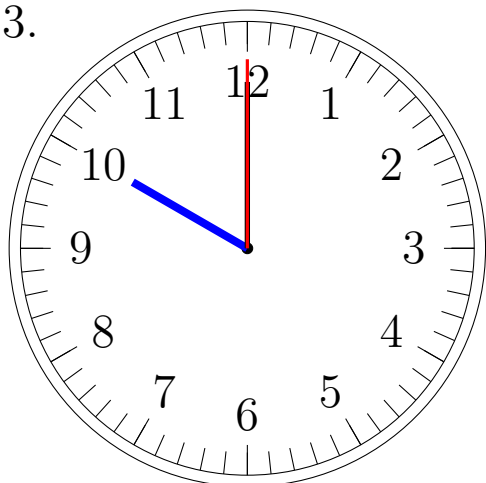
6:00:00

2.



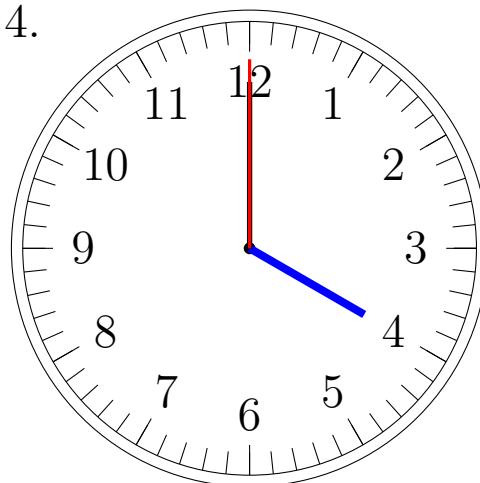
9:00:00

3.



10:00:00

4.



4:00:00