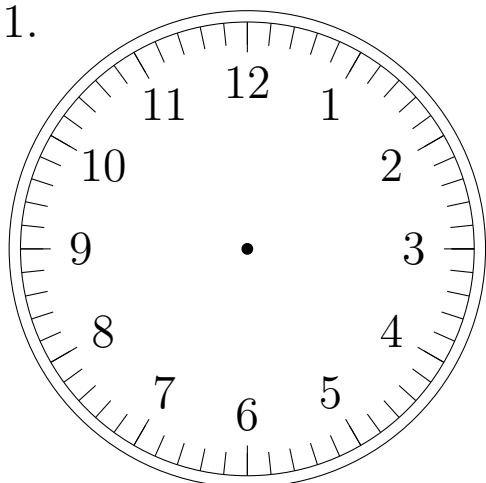


Place d'Aiguilles sur une Horloge Analogique (D)

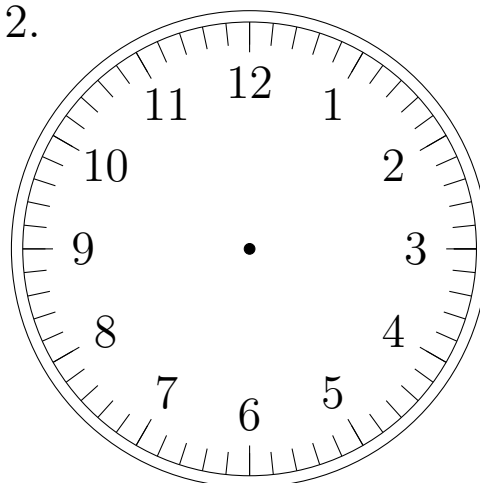
Placer les aiguilles de l'horloge pour qu'elles montrent le temps indiqué.

1.



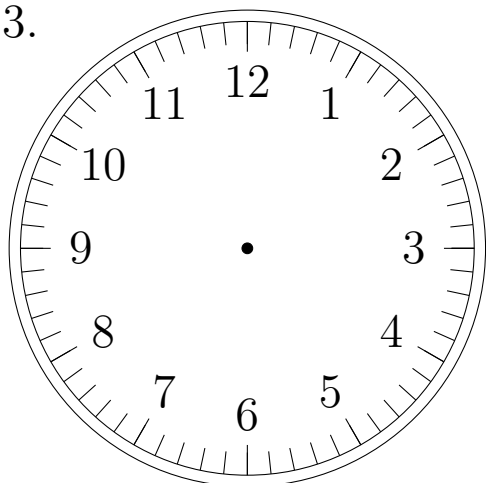
3:00:00

2.



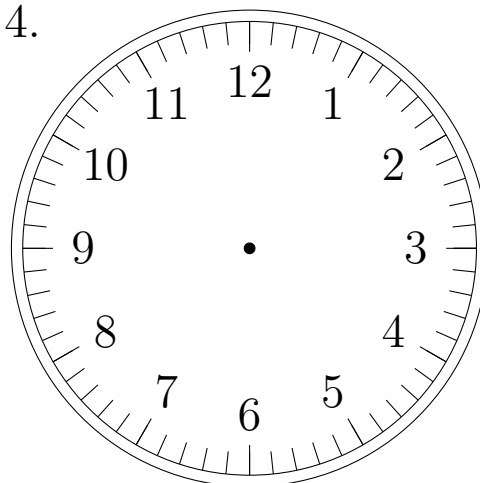
9:00:00

3.



12:00:00

4.

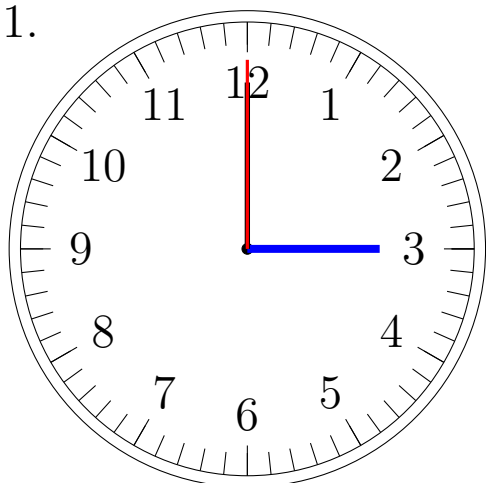


3:00:00

Place d'Aiguilles sur une Horloge Analogique (D) Solutions

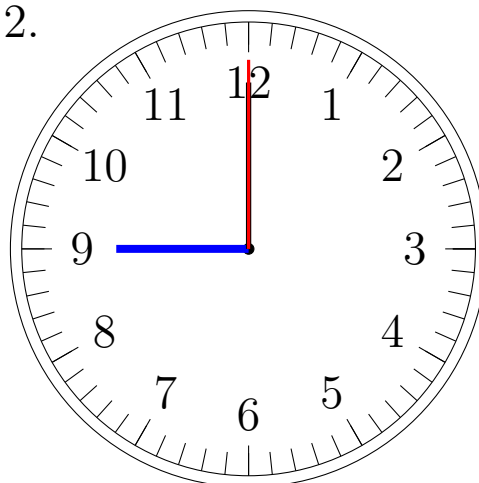
Placer les aiguilles de l'horloge pour qu'elles montrent le temps indiqué.

1.



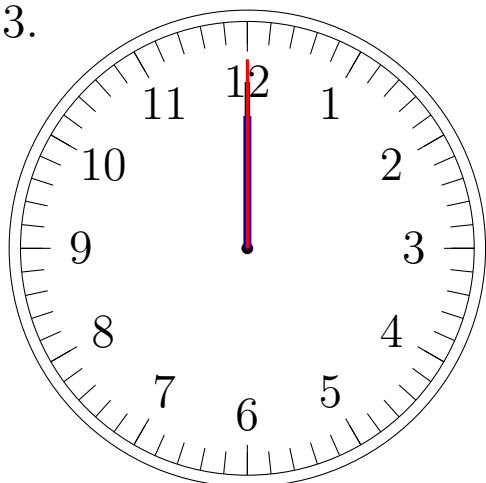
3:00:00

2.



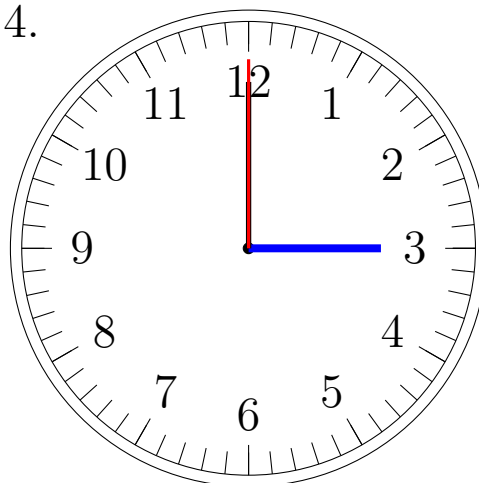
9:00:00

3.



12:00:00

4.



3:00:00