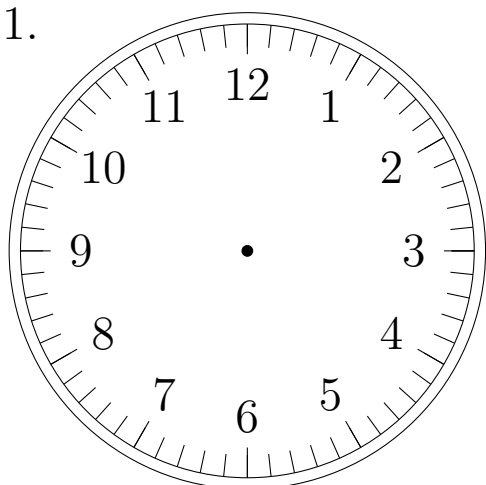


Place d'Aiguilles sur une Horloge Analogique (A)

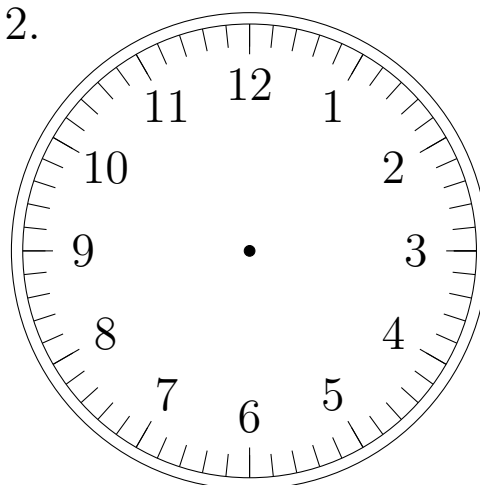
Placer les aiguilles de l'horloge pour qu'elles montrent le temps indiqué.

1.



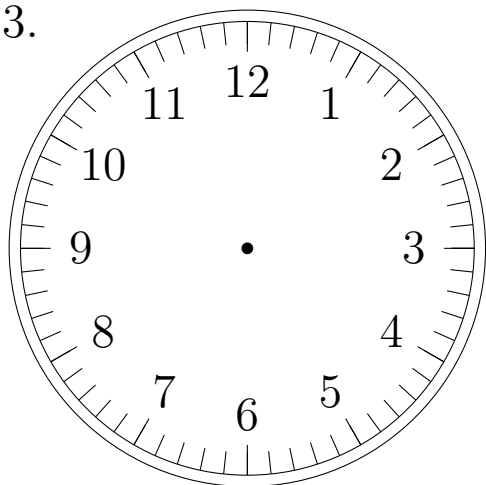
12:00:00

2.



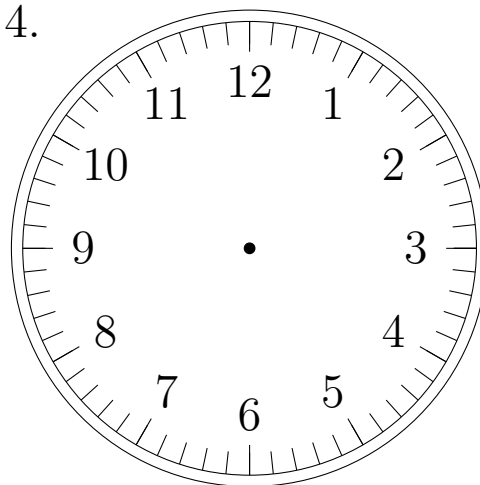
10:00:00

3.



7:00:00

4.

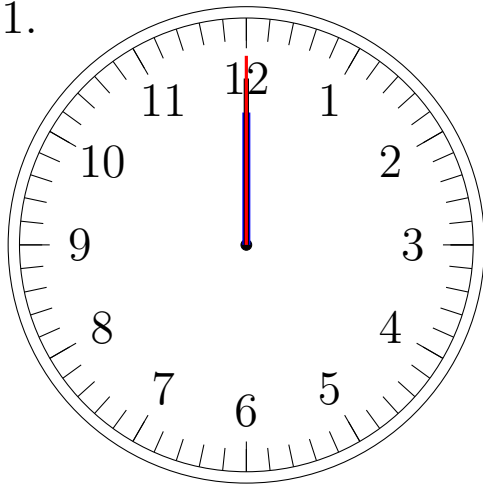


9:00:00

Place d'Aiguilles sur une Horloge Analogique (A) Solutions

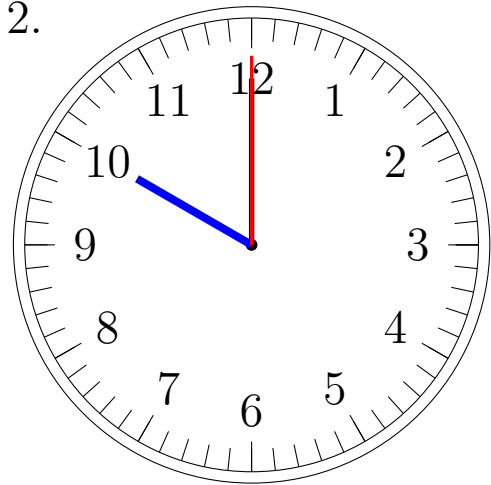
Placer les aiguilles de l'horloge pour qu'elles montrent le temps indiqué.

1.



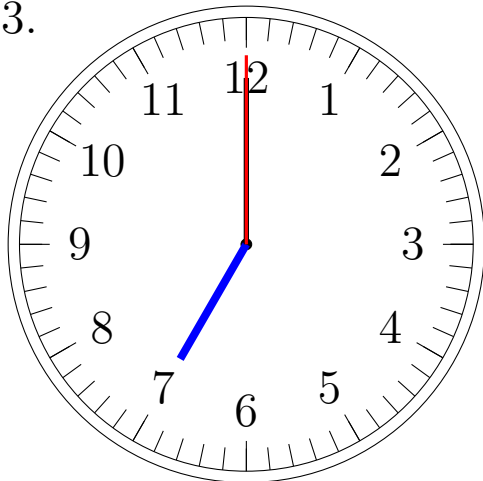
12:00:00

2.



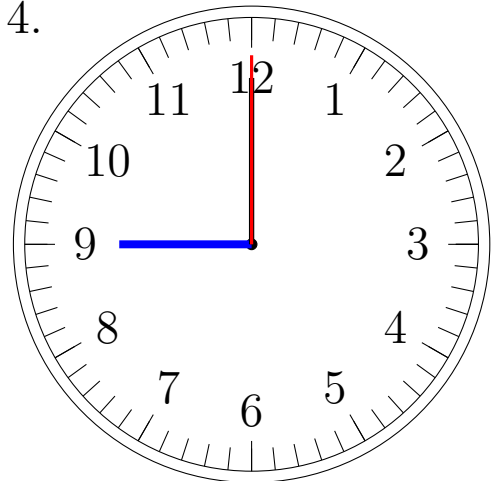
10:00:00

3.



7:00:00

4.



9:00:00