

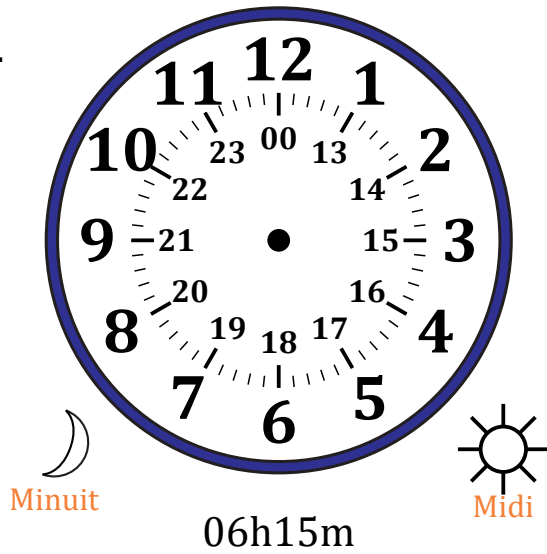
# Place d'Aiguilles sur Une Horloge Analogique (F)

Nom: \_\_\_\_\_

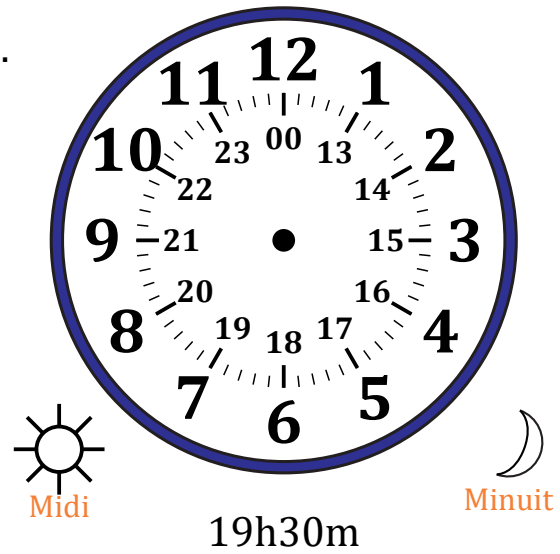
Date: \_\_\_\_\_

Placer les aiguilles de l'horloge pour qu'elles montrent le temps indiqué.

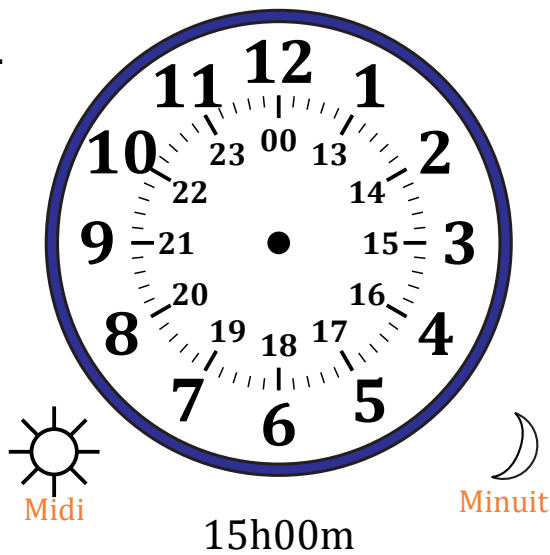
1.



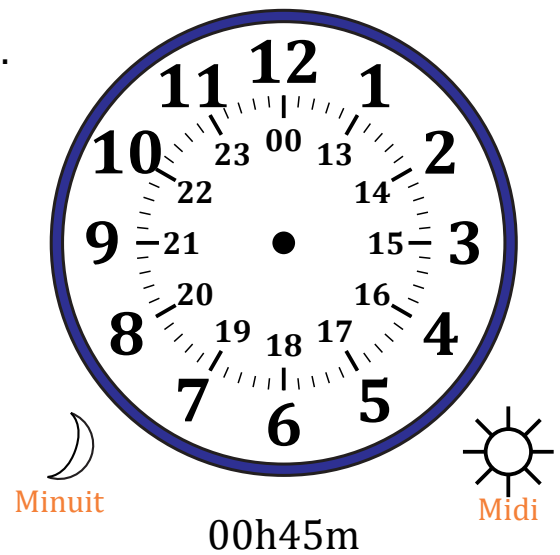
2.



3.



4.



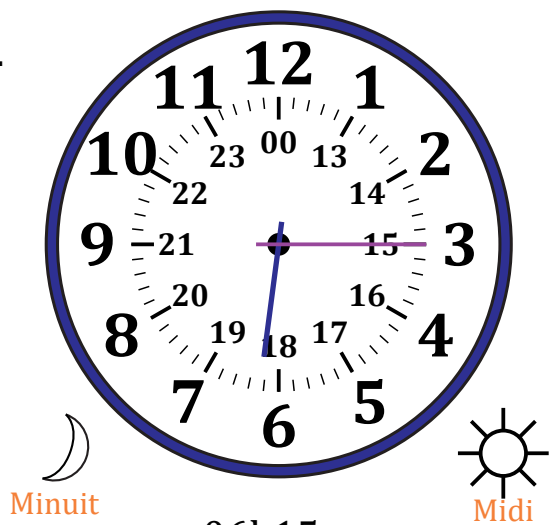
# Place d'Aiguilles sur Une Horloge Analogique (F) Solutions

Nom: \_\_\_\_\_

Date: \_\_\_\_\_

Placer les aiguilles de l'horloge pour qu'elles montrent le temps indiqué.

1.

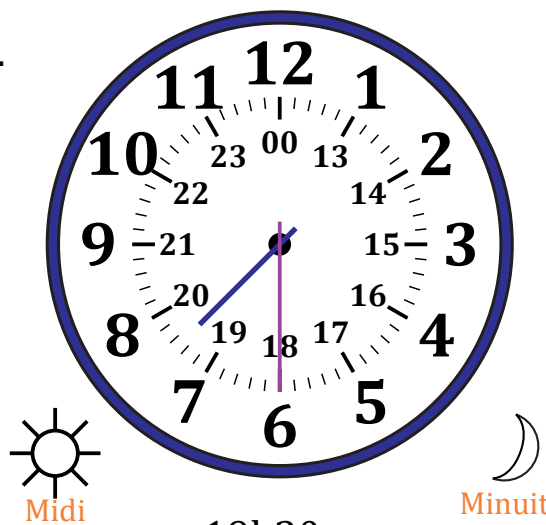


Minuit

Midi

06h15m

2.

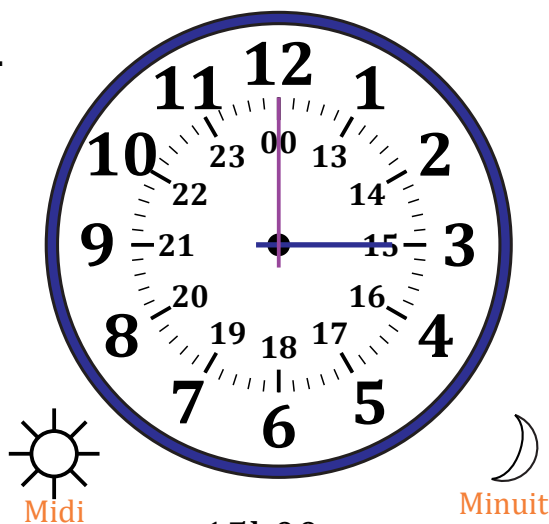


Midi

Minuit

19h30m

3.

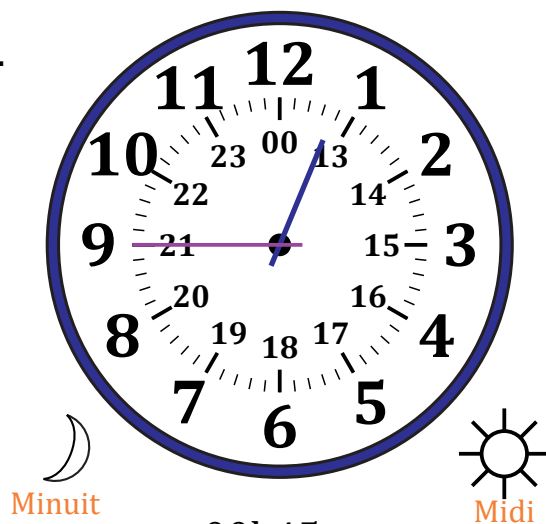


Midi

Minuit

15h00m

4.



Minuit

Midi

00h45m