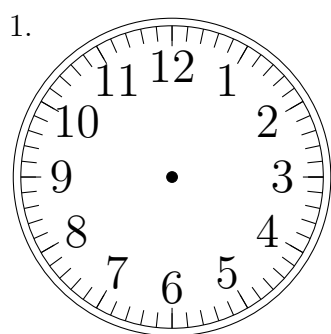
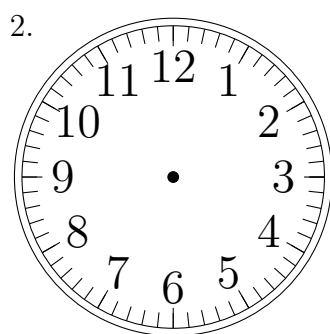


Place d'Aiguilles sur une Horloge Analogique (A)

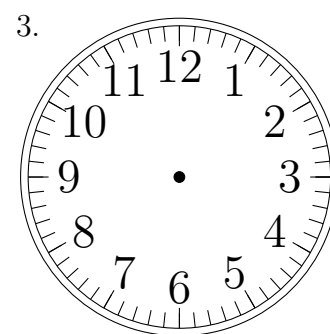
Placer les aiguilles de l'horloge pour qu'elles montrent le temps indiqué.



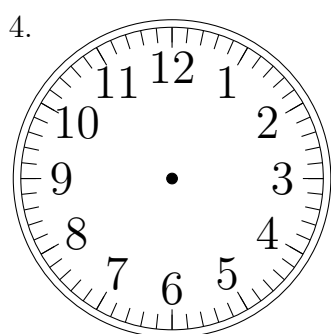
5:00:00



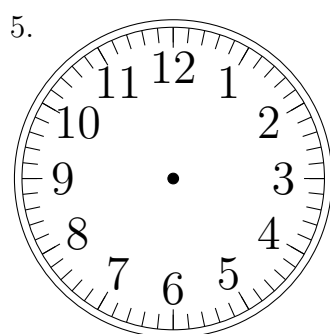
10:00:00



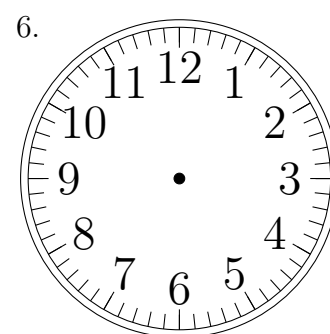
10:00:00



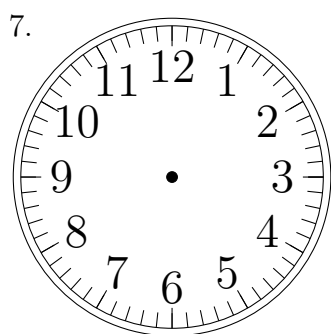
3:00:00



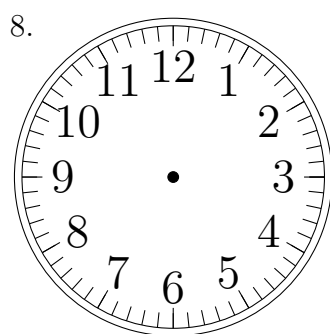
6:00:00



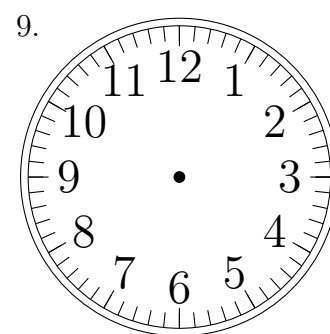
12:00:00



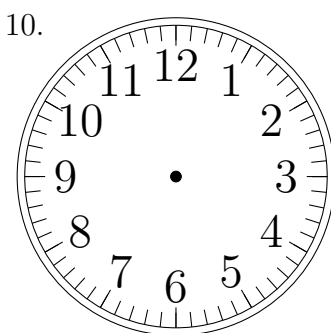
4:00:00



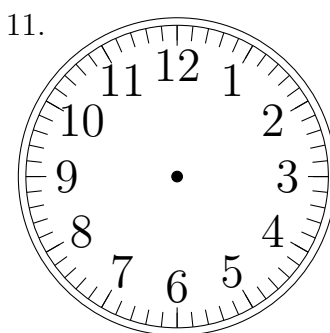
2:00:00



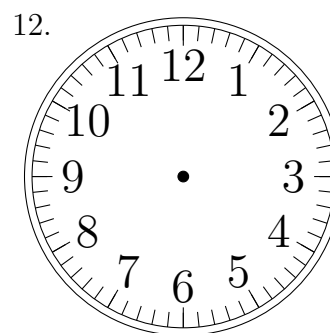
9:00:00



8:00:00



2:00:00

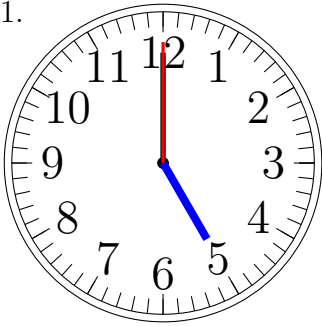


4:00:00

Place d'Aiguilles sur une Horloge Analogique (A) Solutions

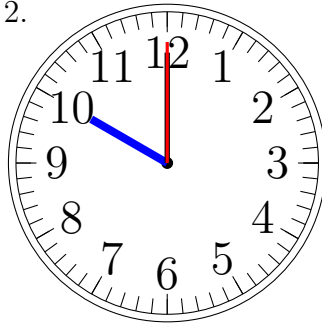
Placer les aiguilles de l'horloge pour qu'elles montrent le temps indiqué.

1.



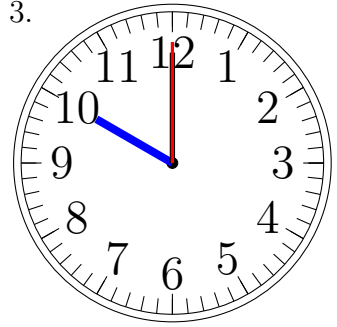
5:00:00

2.



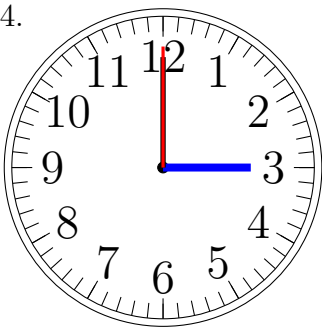
10:00:00

3.



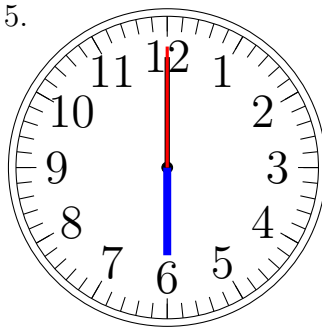
10:00:00

4.



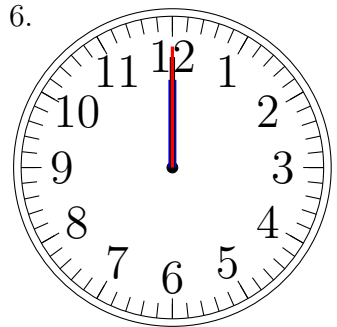
3:00:00

5.



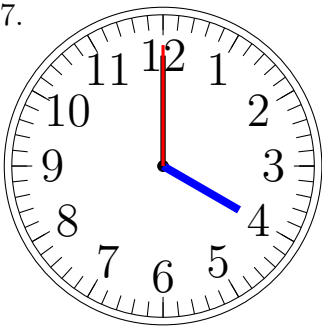
6:00:00

6.



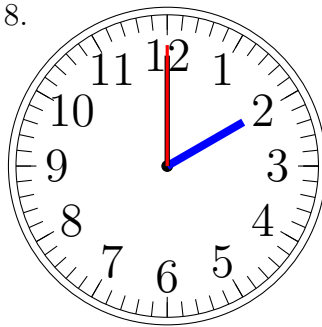
12:00:00

7.



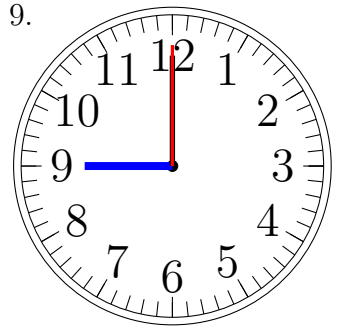
4:00:00

8.



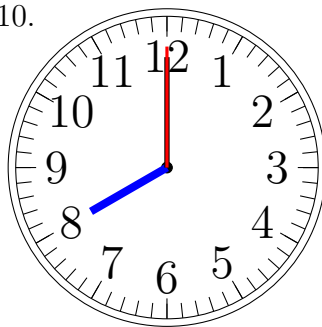
2:00:00

9.



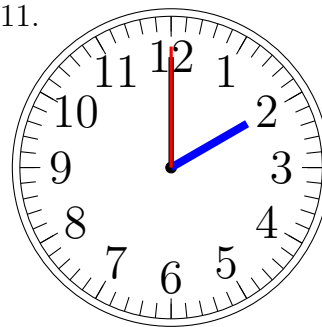
9:00:00

10.



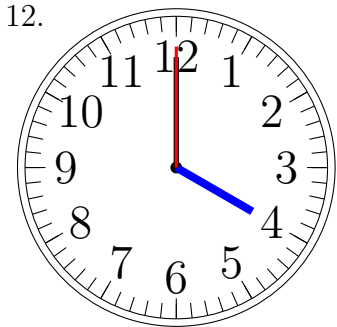
8:00:00

11.



2:00:00

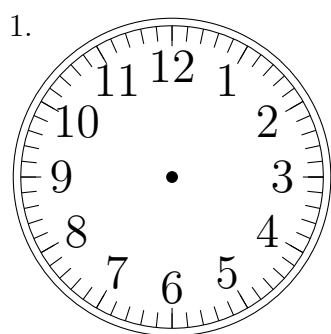
12.



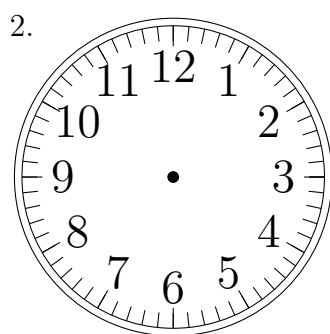
4:00:00

Place d'Aiguilles sur une Horloge Analogique (B)

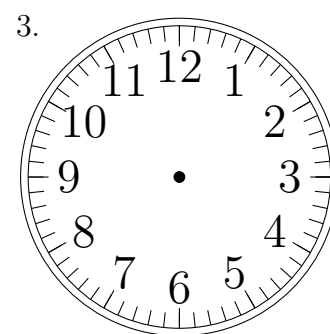
Placer les aiguilles de l'horloge pour qu'elles montrent le temps indiqué.



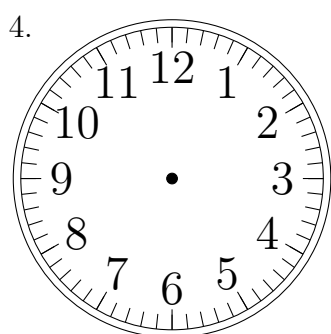
10:00:00



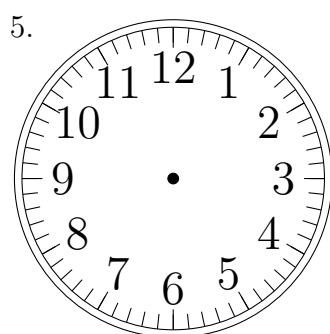
2:00:00



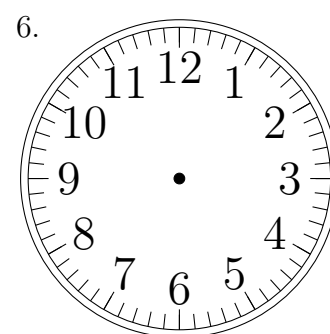
7:00:00



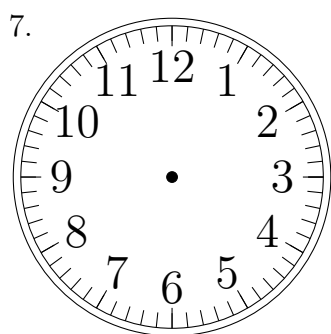
11:00:00



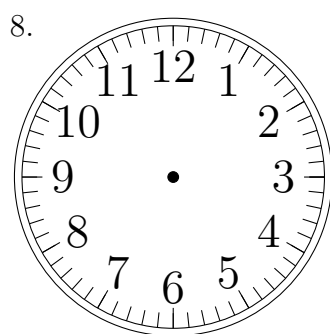
5:00:00



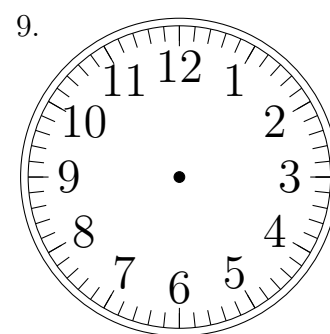
5:00:00



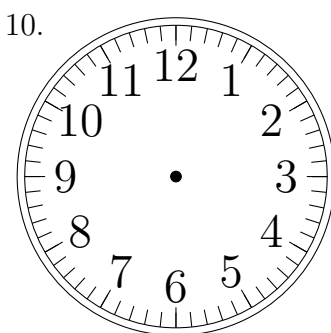
8:00:00



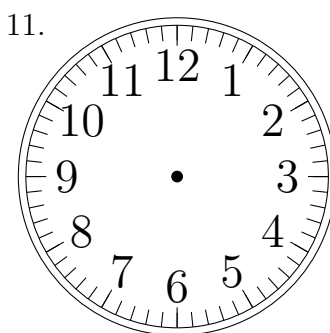
12:00:00



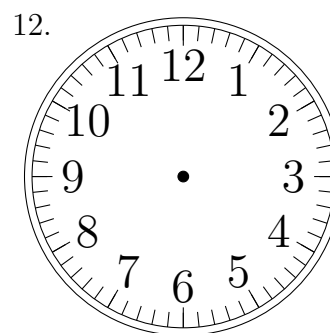
11:00:00



1:00:00



1:00:00

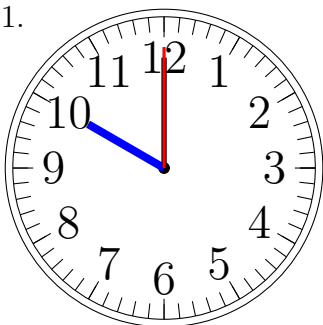


2:00:00

Place d'Aiguilles sur une Horloge Analogique (B) Solutions

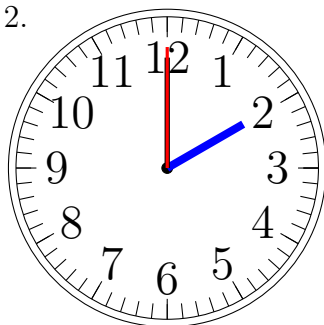
Placer les aiguilles de l'horloge pour qu'elles montrent le temps indiqué.

1.



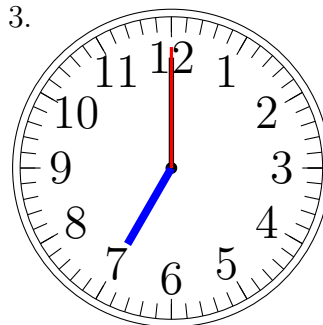
10:00:00

2.



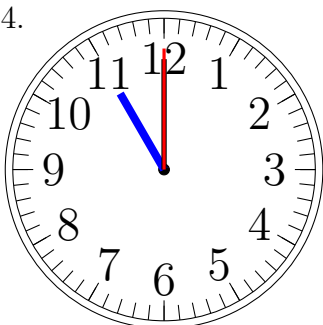
2:00:00

3.



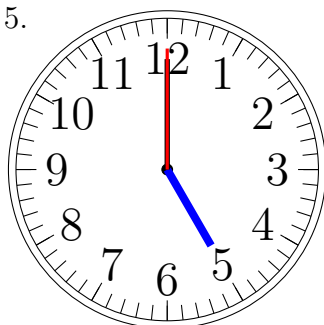
7:00:00

4.



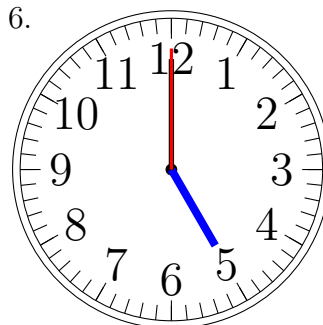
11:00:00

5.



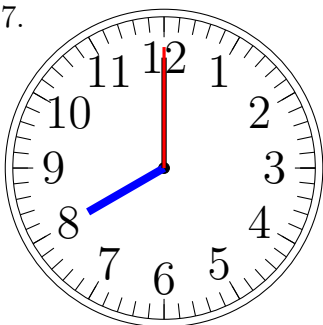
5:00:00

6.



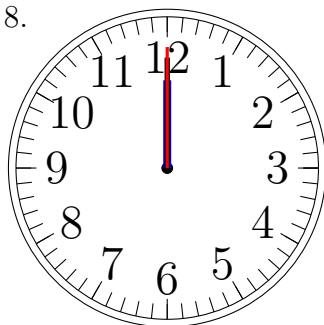
5:00:00

7.



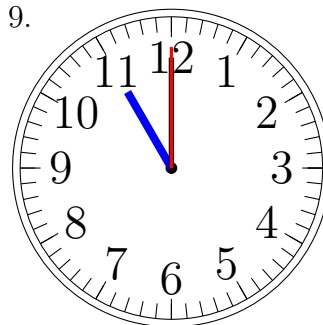
8:00:00

8.



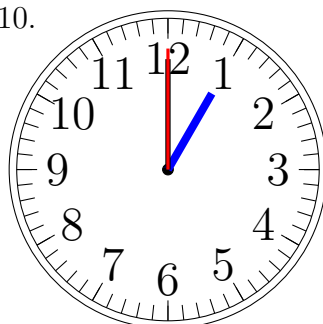
12:00:00

9.



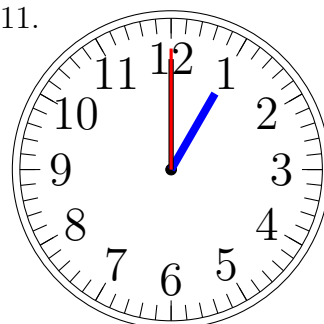
11:00:00

10.



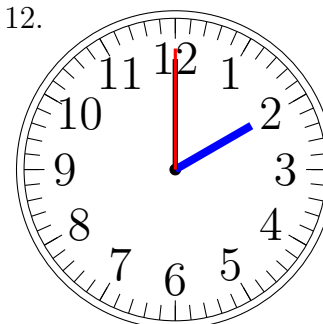
1:00:00

11.



1:00:00

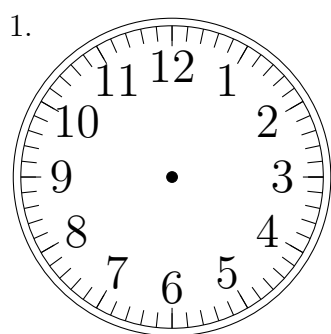
12.



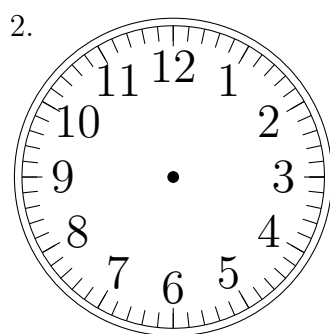
2:00:00

Place d'Aiguilles sur une Horloge Analogique (C)

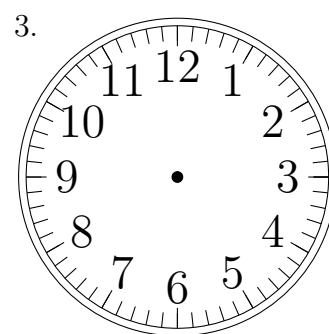
Placer les aiguilles de l'horloge pour qu'elles montrent le temps indiqué.



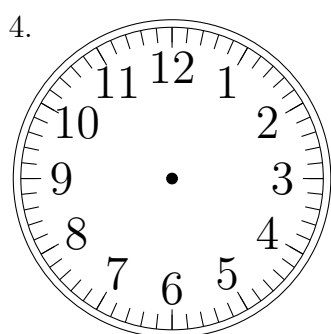
6:00:00



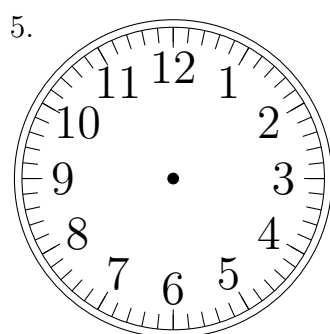
4:00:00



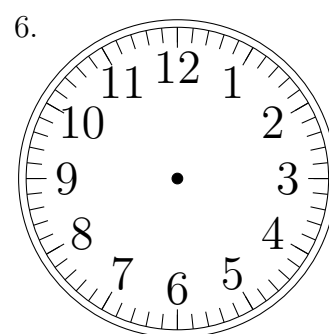
1:00:00



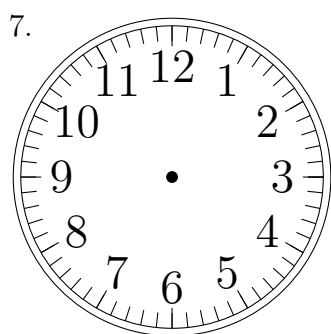
4:00:00



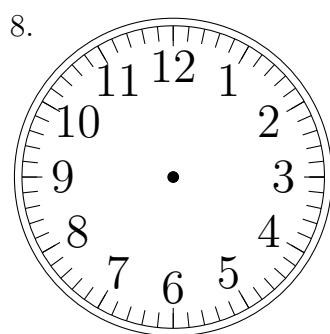
9:00:00



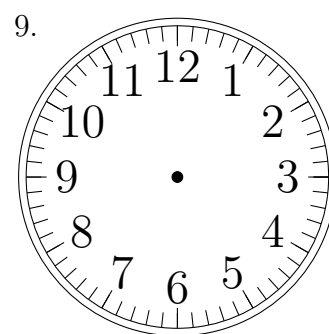
12:00:00



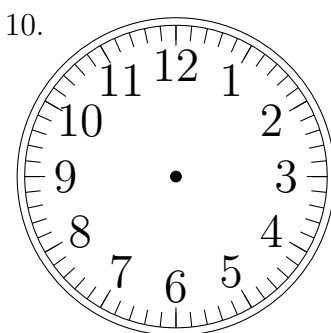
8:00:00



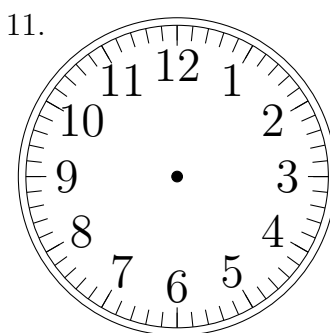
11:00:00



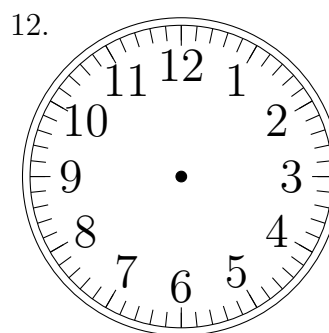
5:00:00



6:00:00



10:00:00

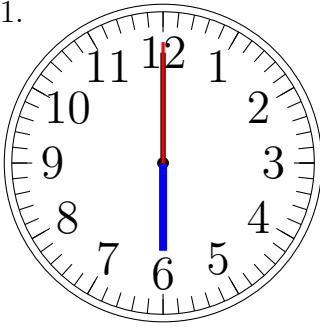


5:00:00

Place d'Aiguilles sur une Horloge Analogique (C) Solutions

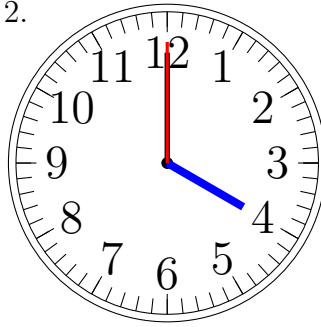
Placer les aiguilles de l'horloge pour qu'elles montrent le temps indiqué.

1.



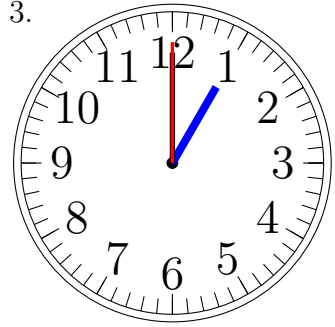
6:00:00

2.



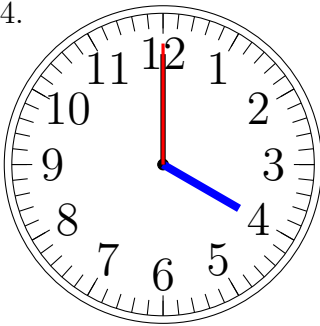
4:00:00

3.



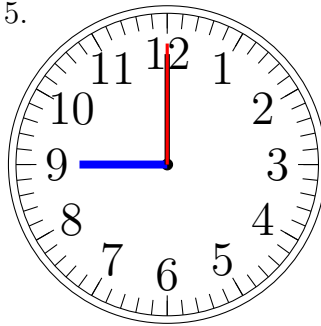
1:00:00

4.



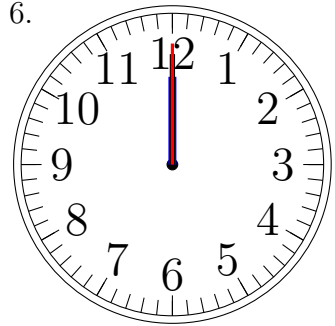
4:00:00

5.



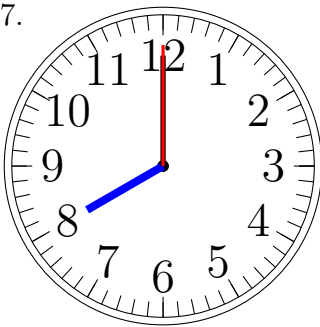
9:00:00

6.



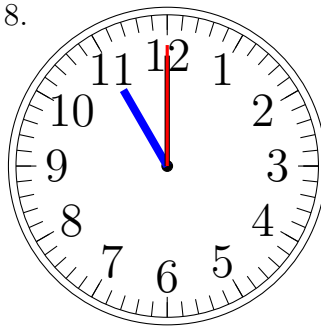
12:00:00

7.



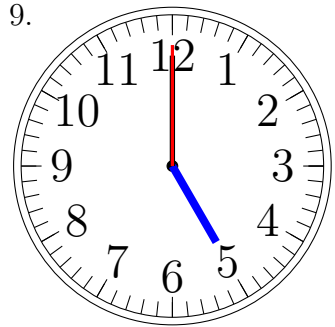
8:00:00

8.



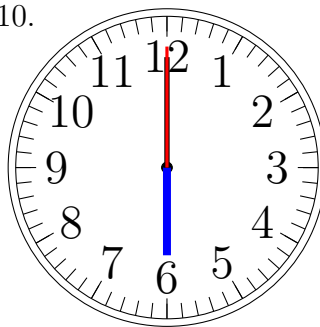
11:00:00

9.



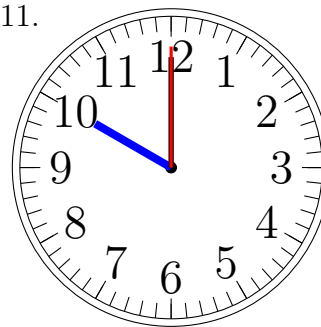
5:00:00

10.



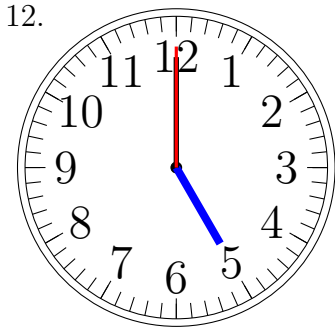
6:00:00

11.



10:00:00

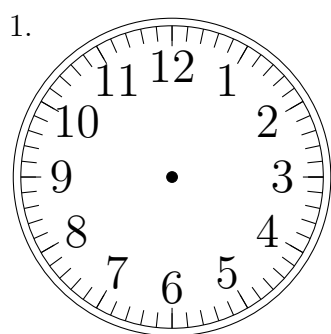
12.



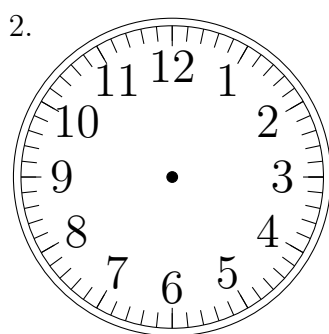
5:00:00

Place d'Aiguilles sur une Horloge Analogique (D)

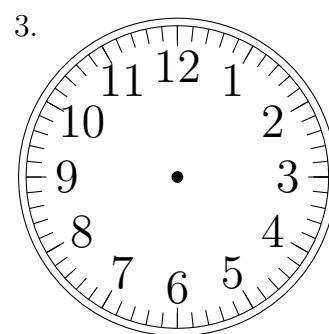
Placer les aiguilles de l'horloge pour qu'elles montrent le temps indiqué.



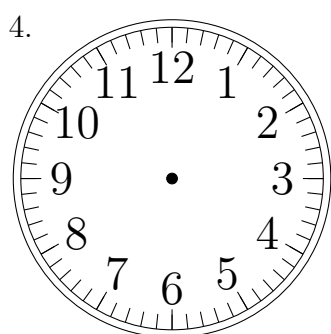
6:00:00



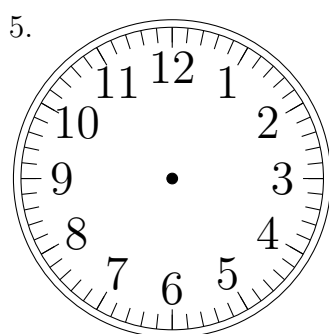
9:00:00



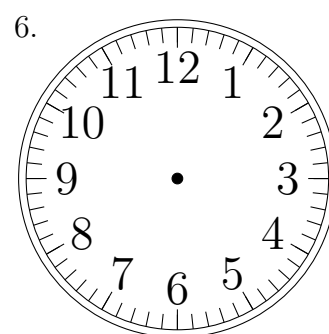
5:00:00



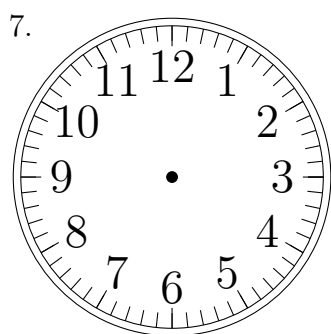
12:00:00



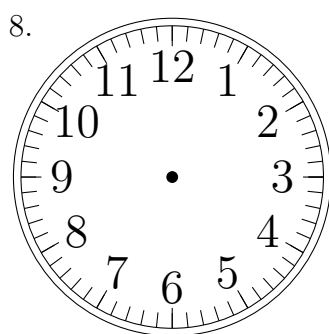
3:00:00



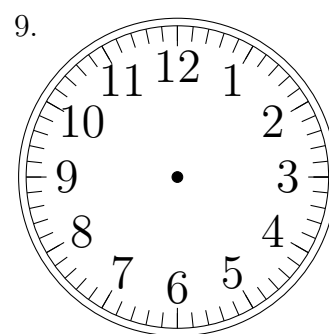
2:00:00



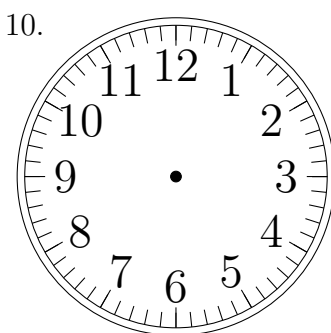
1:00:00



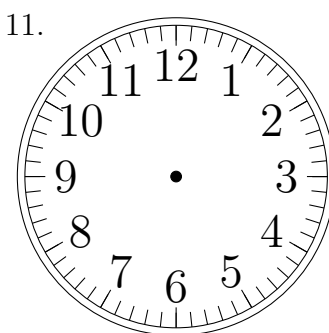
5:00:00



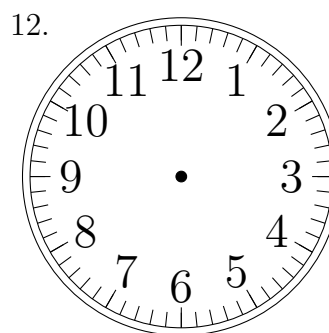
7:00:00



3:00:00



8:00:00

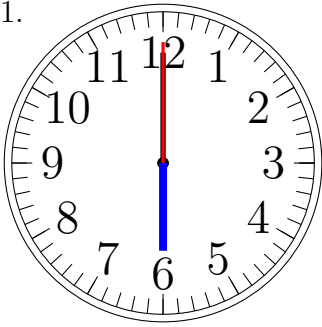


7:00:00

Place d'Aiguilles sur une Horloge Analogique (D) Solutions

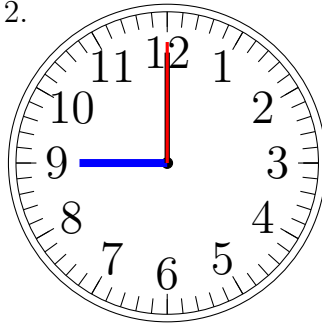
Placer les aiguilles de l'horloge pour qu'elles montrent le temps indiqué.

1.



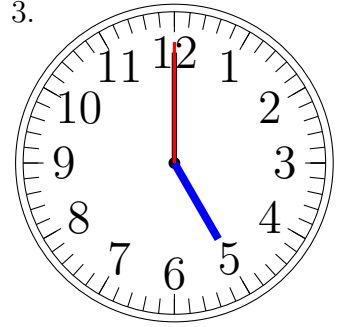
6:00:00

2.



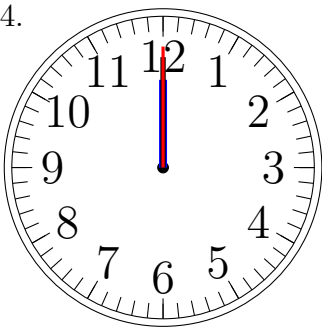
9:00:00

3.



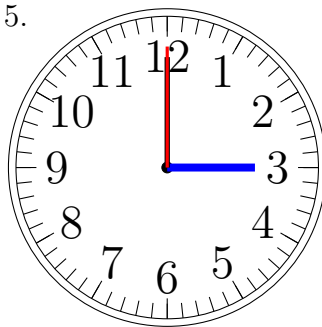
5:00:00

4.



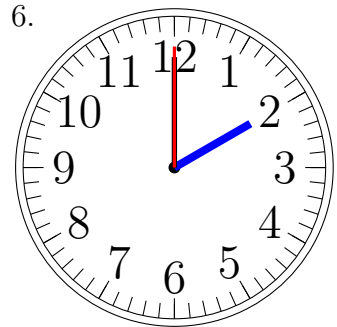
12:00:00

5.



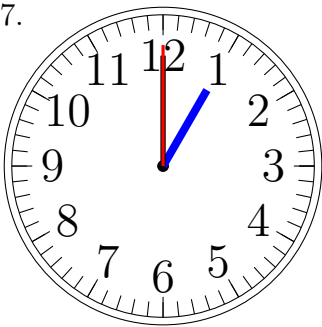
3:00:00

6.



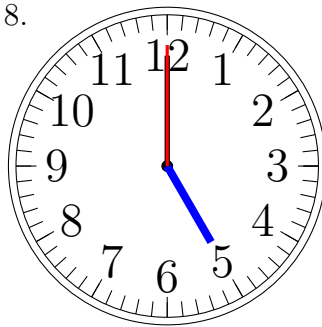
2:00:00

7.



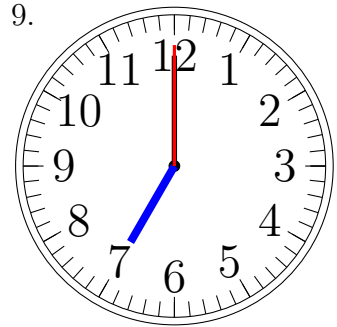
1:00:00

8.



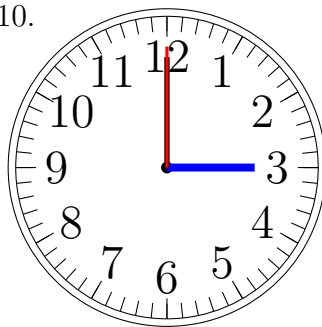
5:00:00

9.



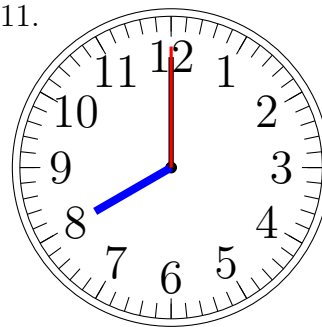
7:00:00

10.



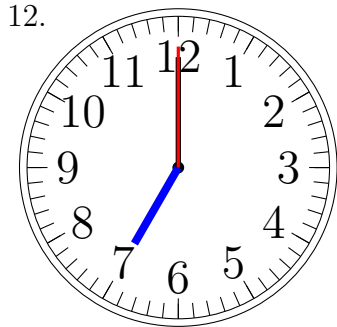
3:00:00

11.



8:00:00

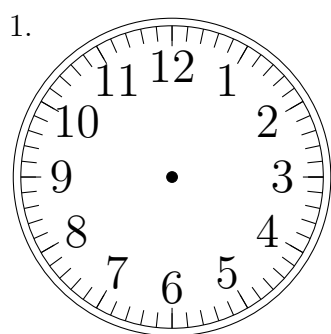
12.



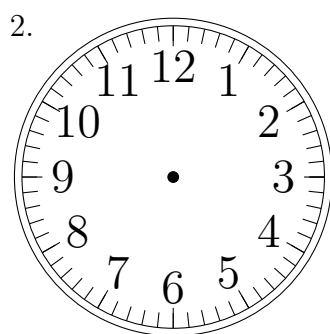
7:00:00

Place d'Aiguilles sur une Horloge Analogique (E)

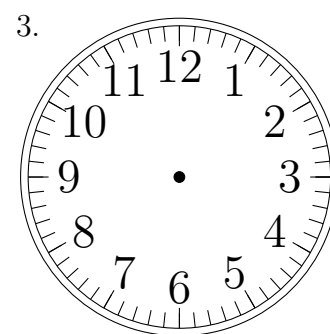
Placer les aiguilles de l'horloge pour qu'elles montrent le temps indiqué.



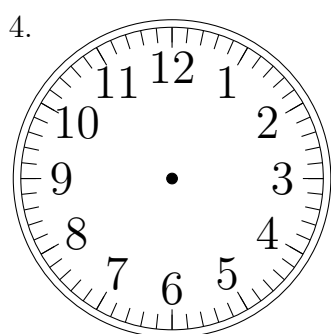
3:00:00



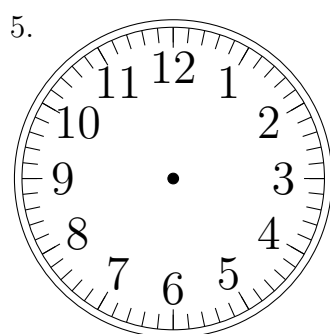
9:00:00



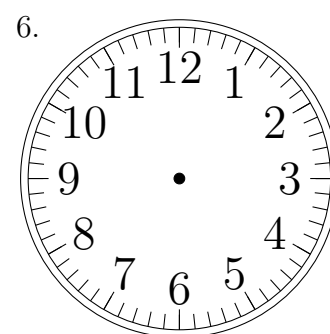
9:00:00



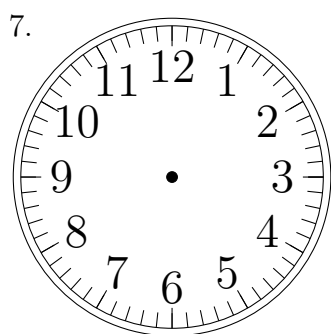
10:00:00



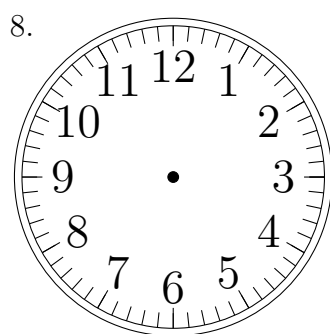
1:00:00



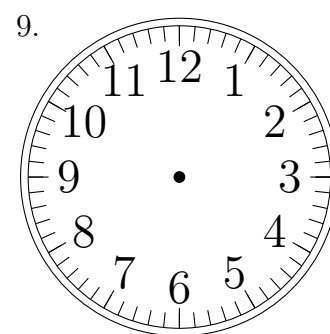
5:00:00



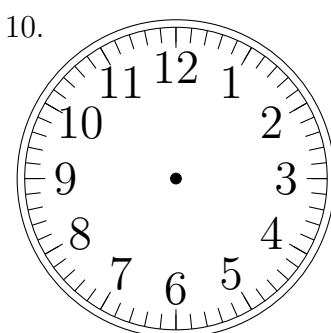
1:00:00



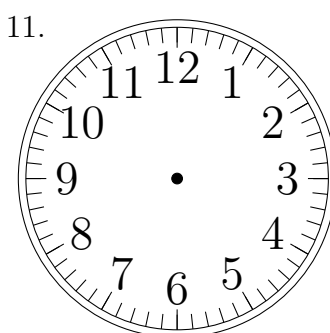
2:00:00



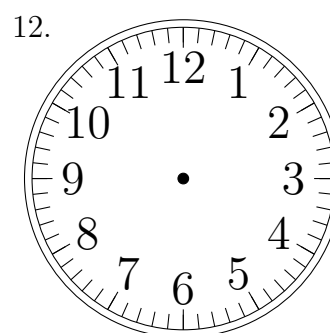
8:00:00



10:00:00



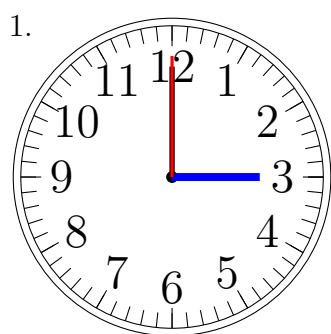
3:00:00



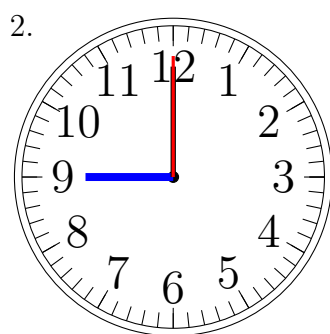
11:00:00

Place d'Aiguilles sur une Horloge Analogique (E) Solutions

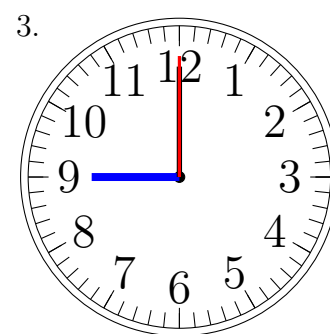
Placer les aiguilles de l'horloge pour qu'elles montrent le temps indiqué.



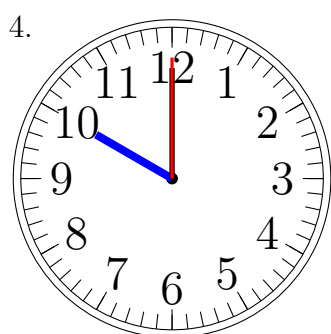
3:00:00



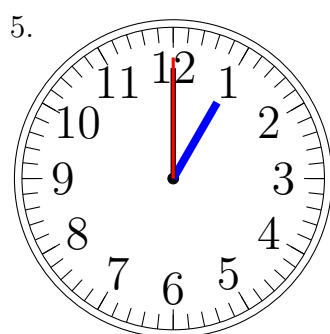
9:00:00



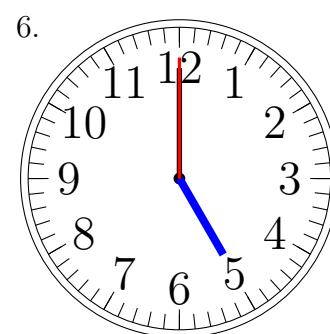
9:00:00



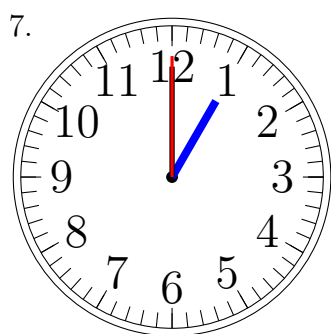
10:00:00



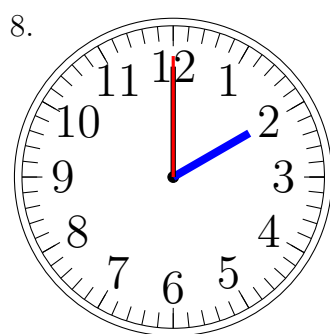
1:00:00



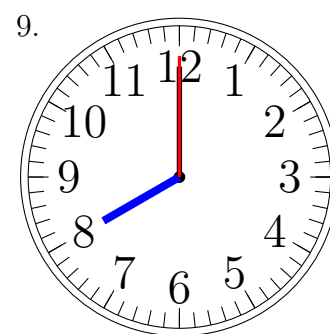
5:00:00



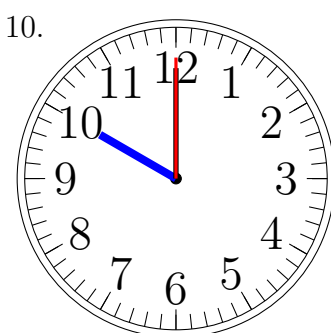
1:00:00



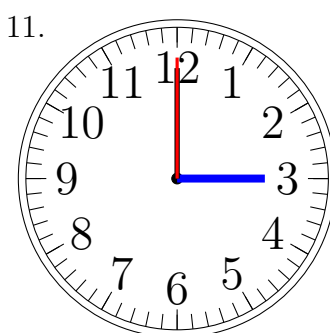
2:00:00



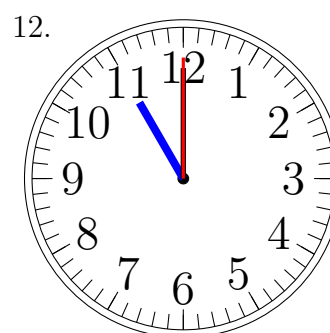
8:00:00



10:00:00



3:00:00

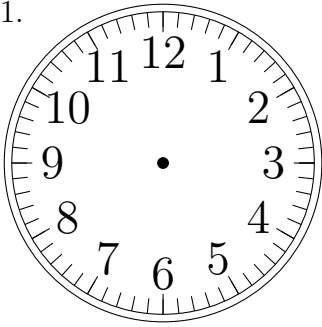


11:00:00

Place d'Aiguilles sur une Horloge Analogique (F)

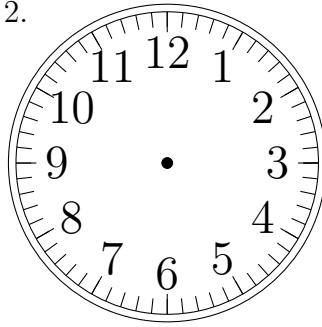
Placer les aiguilles de l'horloge pour qu'elles montrent le temps indiqué.

1.



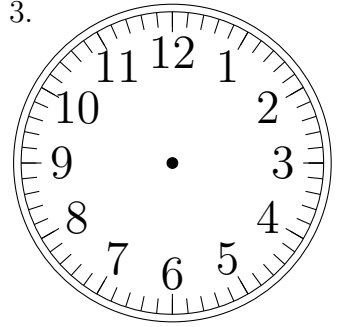
7:00:00

2.



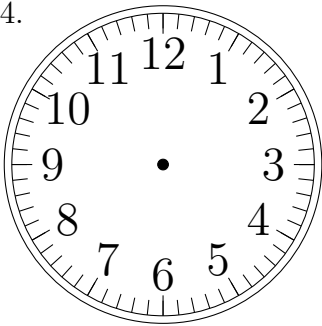
4:00:00

3.



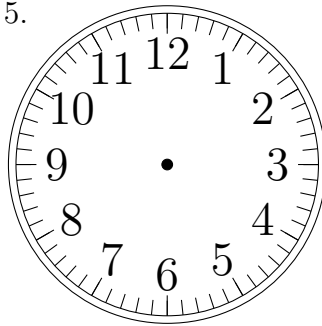
10:00:00

4.



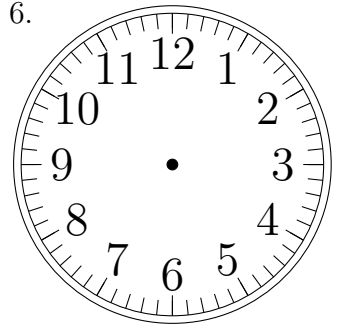
3:00:00

5.



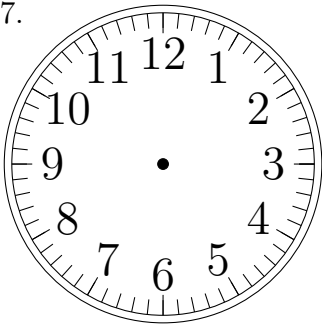
4:00:00

6.



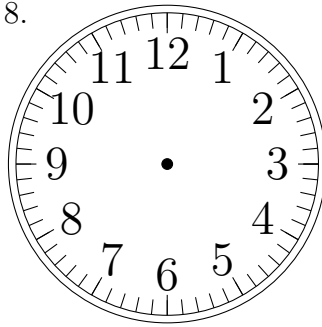
12:00:00

7.



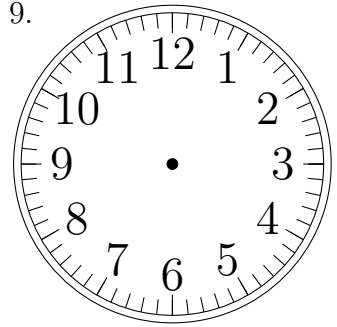
8:00:00

8.



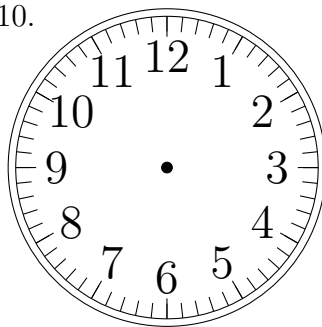
6:00:00

9.



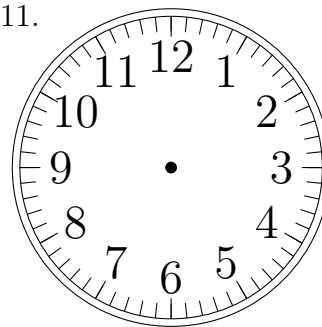
6:00:00

10.



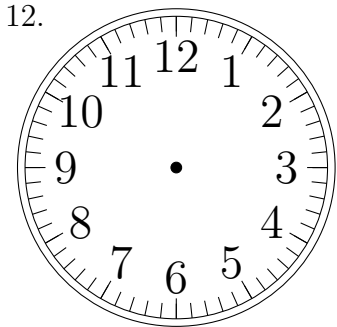
2:00:00

11.



1:00:00

12.

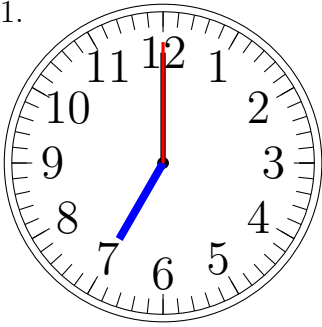


5:00:00

Place d'Aiguilles sur une Horloge Analogique (F) Solutions

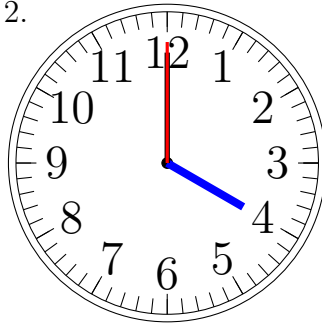
Placer les aiguilles de l'horloge pour qu'elles montrent le temps indiqué.

1.



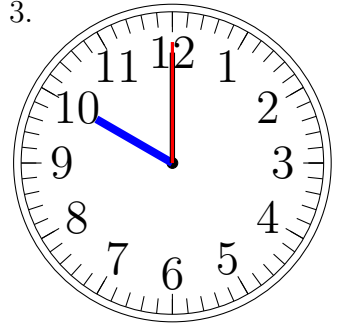
7:00:00

2.



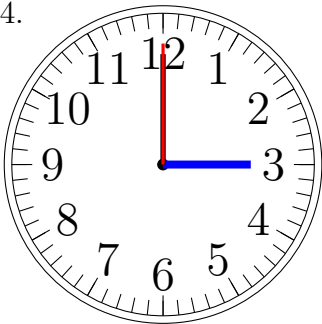
4:00:00

3.



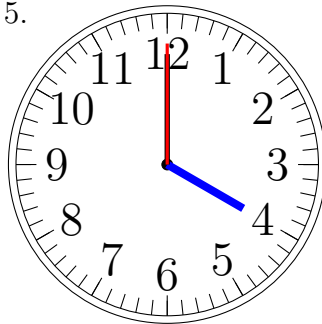
10:00:00

4.



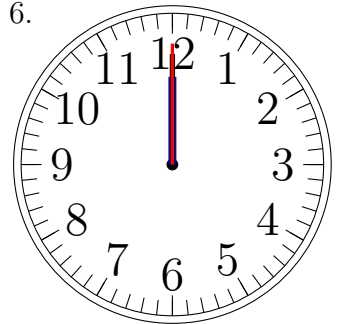
3:00:00

5.



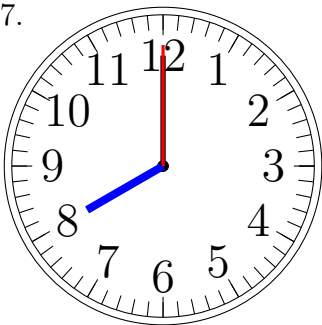
4:00:00

6.



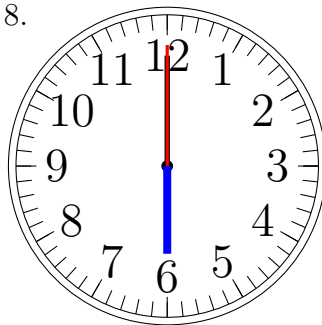
12:00:00

7.



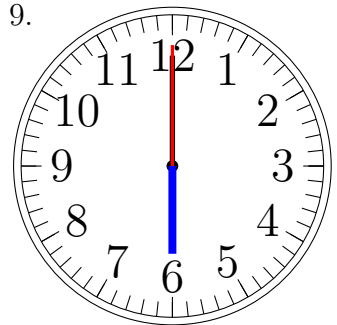
8:00:00

8.



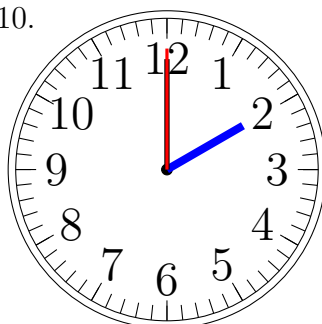
6:00:00

9.



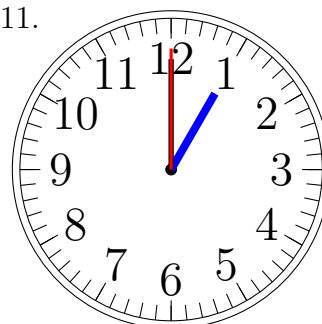
6:00:00

10.



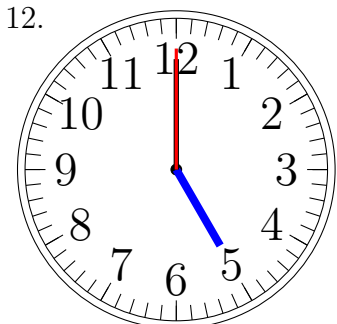
2:00:00

11.



1:00:00

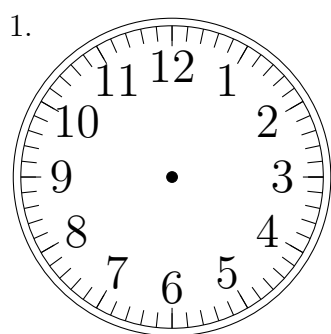
12.



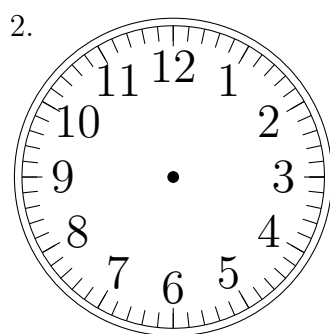
5:00:00

Place d'Aiguilles sur une Horloge Analogique (G)

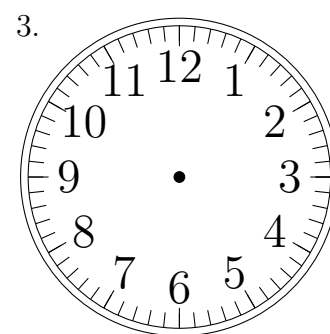
Placer les aiguilles de l'horloge pour qu'elles montrent le temps indiqué.



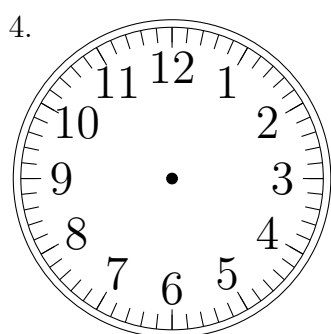
1:00:00



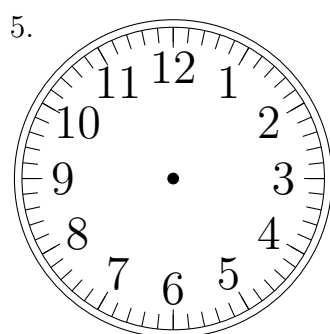
7:00:00



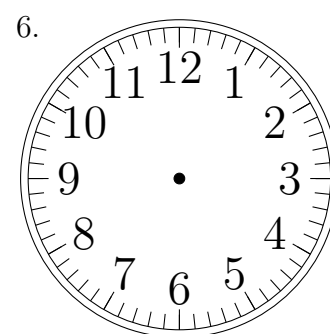
5:00:00



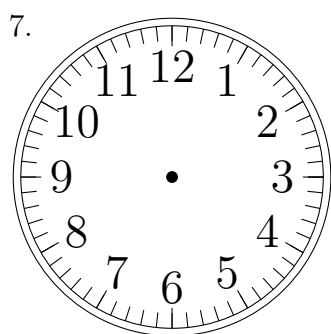
5:00:00



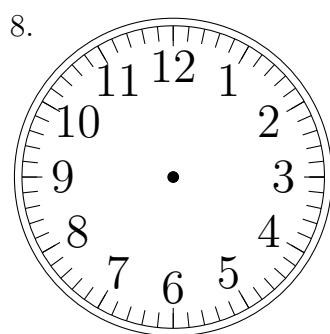
11:00:00



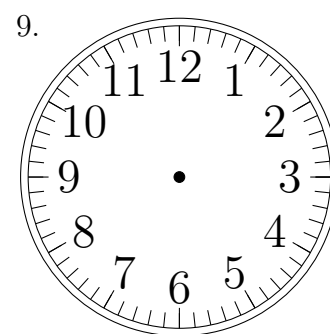
9:00:00



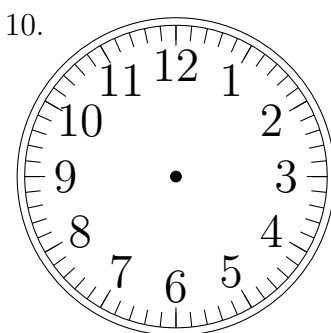
6:00:00



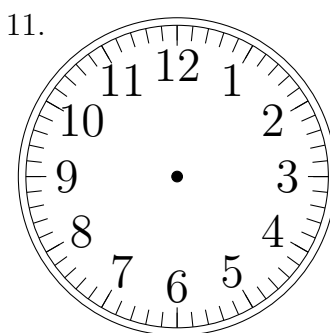
4:00:00



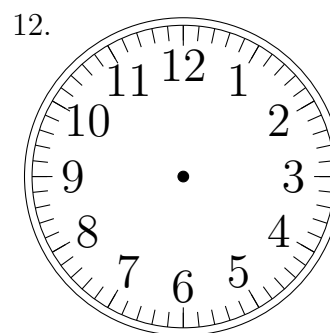
10:00:00



2:00:00



6:00:00

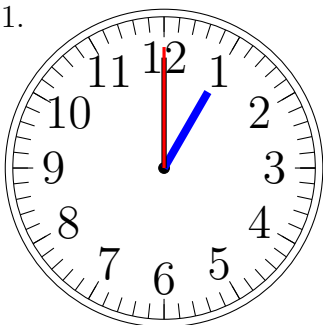


12:00:00

Place d'Aiguilles sur une Horloge Analogique (G) Solutions

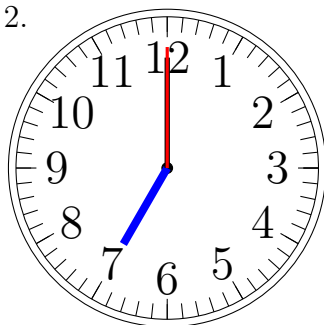
Placer les aiguilles de l'horloge pour qu'elles montrent le temps indiqué.

1.



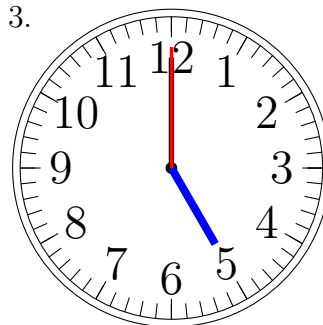
1:00:00

2.



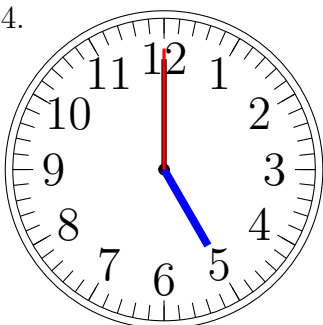
7:00:00

3.



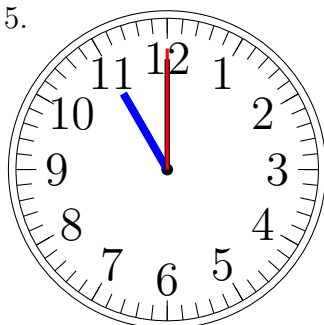
5:00:00

4.



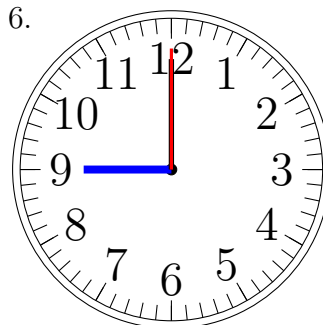
5:00:00

5.



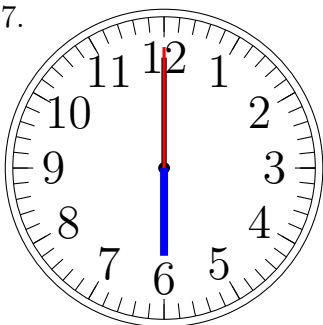
11:00:00

6.



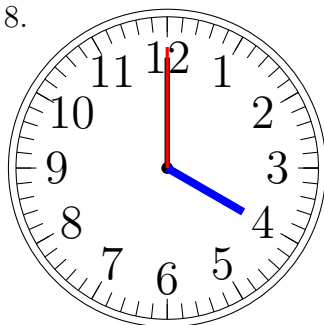
9:00:00

7.



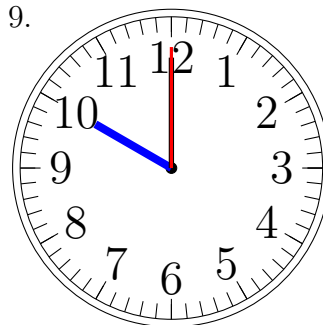
6:00:00

8.



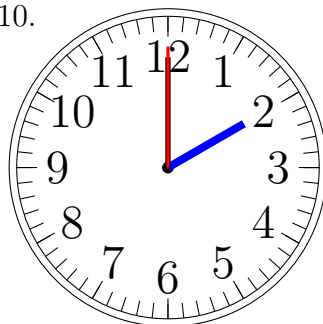
4:00:00

9.



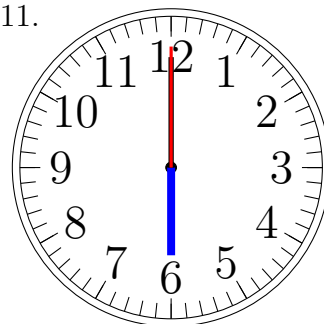
10:00:00

10.



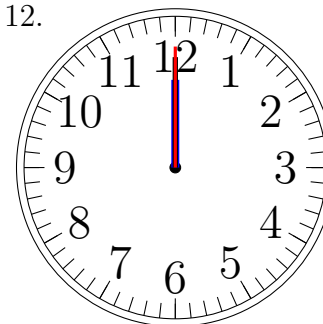
2:00:00

11.



6:00:00

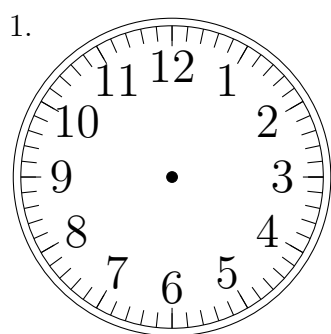
12.



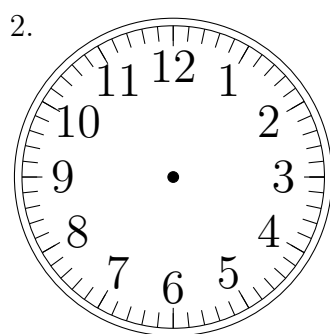
12:00:00

Place d'Aiguilles sur une Horloge Analogique (H)

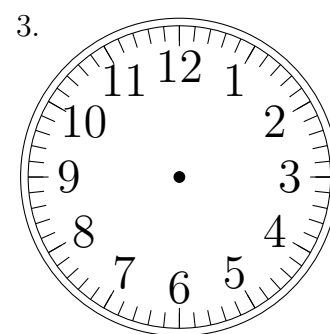
Placer les aiguilles de l'horloge pour qu'elles montrent le temps indiqué.



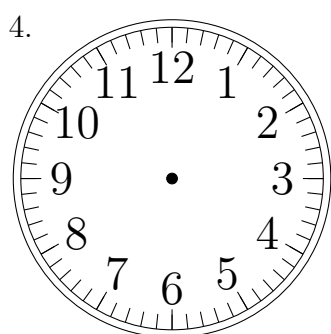
2:00:00



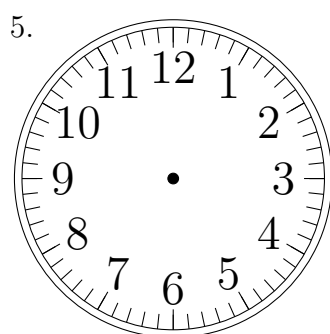
10:00:00



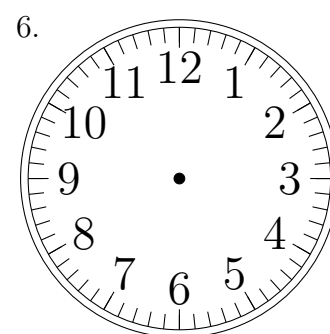
7:00:00



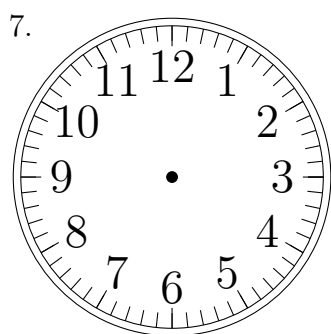
10:00:00



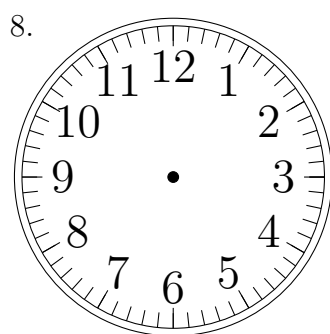
9:00:00



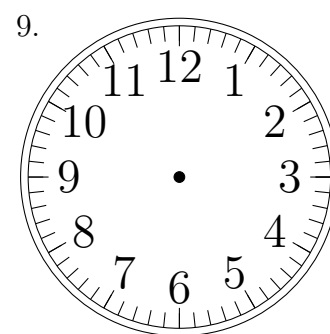
11:00:00



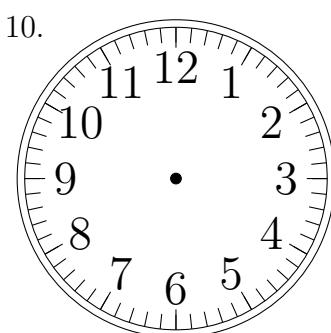
8:00:00



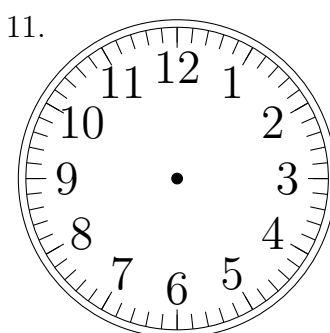
2:00:00



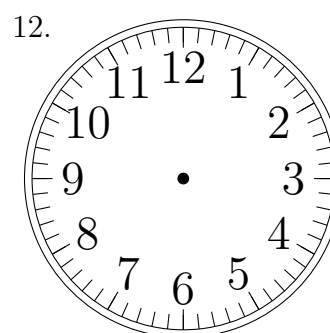
5:00:00



1:00:00



3:00:00

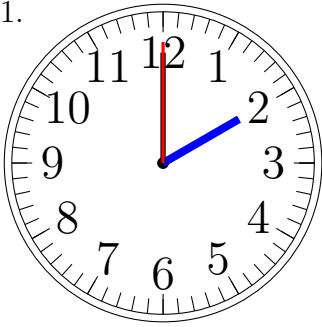


5:00:00

Place d'Aiguilles sur une Horloge Analogique (H) Solutions

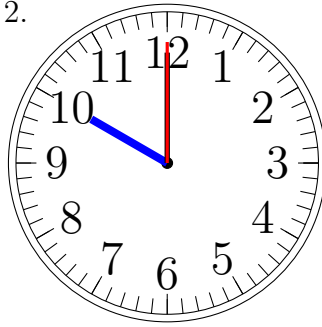
Placer les aiguilles de l'horloge pour qu'elles montrent le temps indiqué.

1.



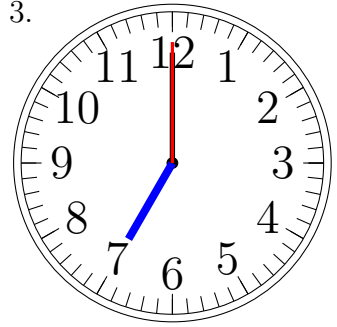
2:00:00

2.



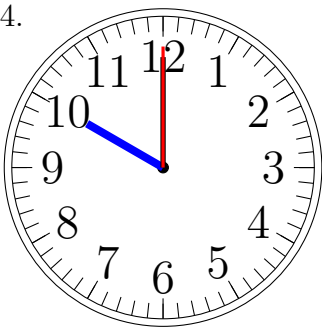
10:00:00

3.



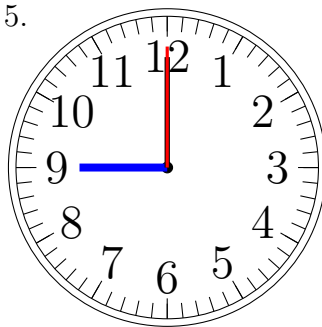
7:00:00

4.



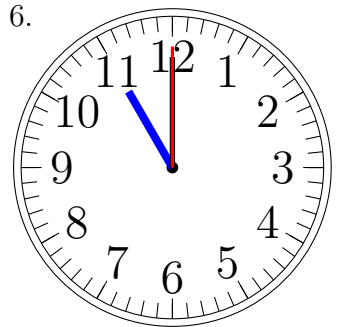
10:00:00

5.



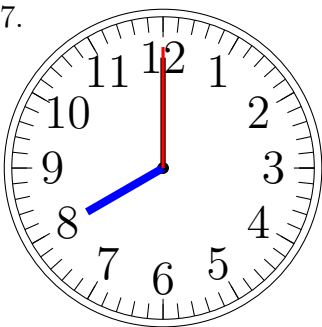
9:00:00

6.



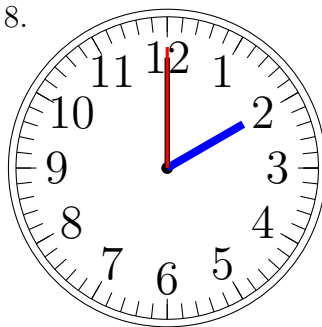
11:00:00

7.



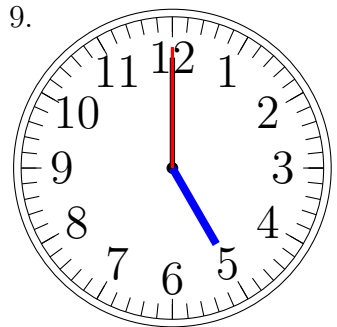
8:00:00

8.



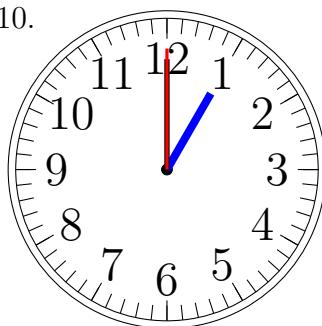
2:00:00

9.



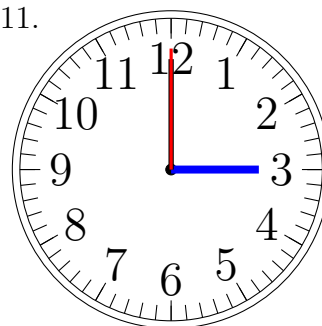
5:00:00

10.



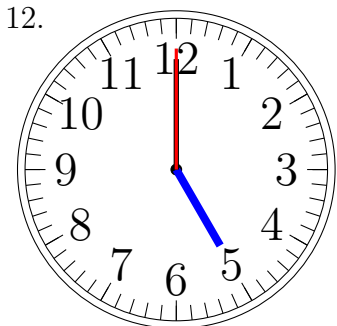
1:00:00

11.



3:00:00

12.

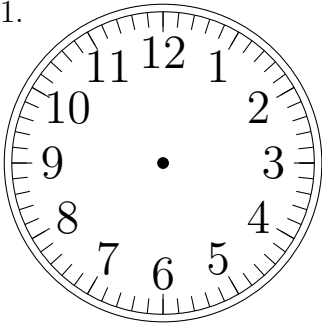


5:00:00

Place d'Aiguilles sur une Horloge Analogique (I)

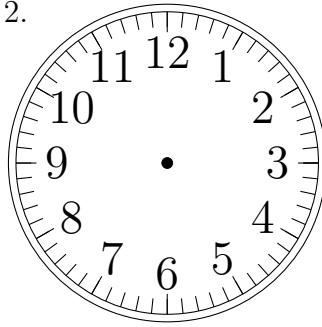
Placer les aiguilles de l'horloge pour qu'elles montrent le temps indiqué.

1.



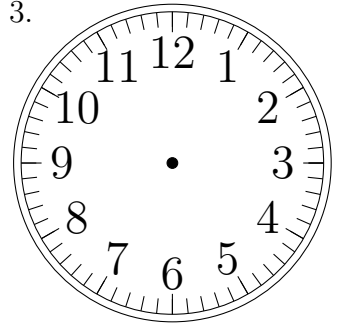
8:00:00

2.



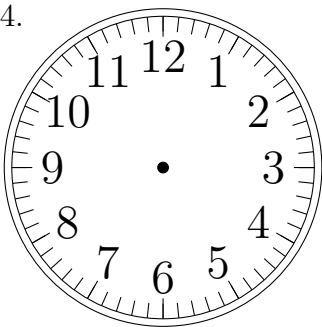
2:00:00

3.



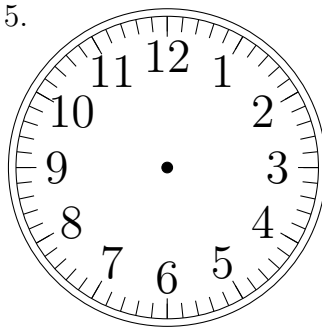
7:00:00

4.



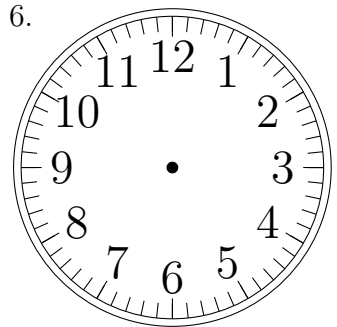
7:00:00

5.



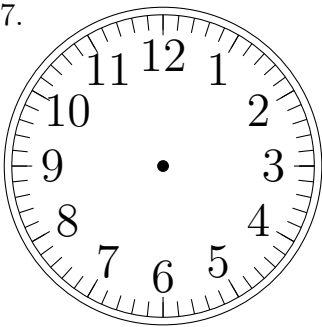
3:00:00

6.



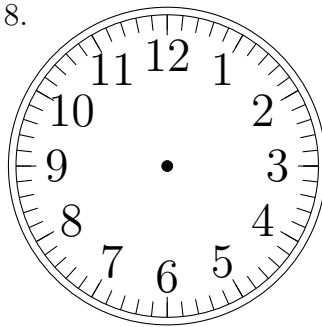
12:00:00

7.



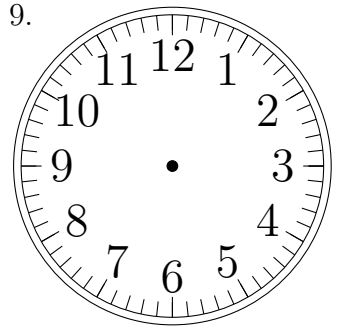
9:00:00

8.



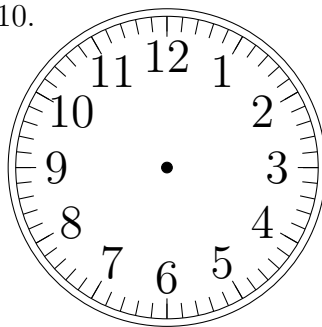
6:00:00

9.



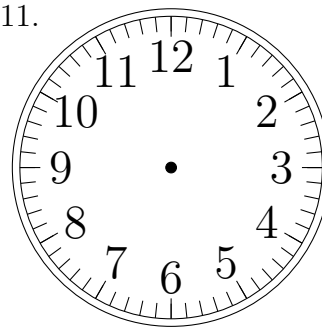
11:00:00

10.



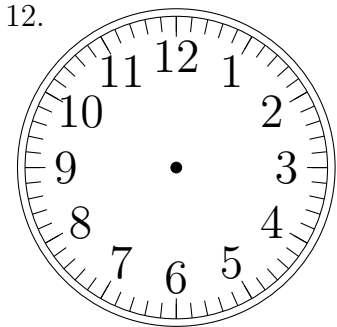
11:00:00

11.



12:00:00

12.

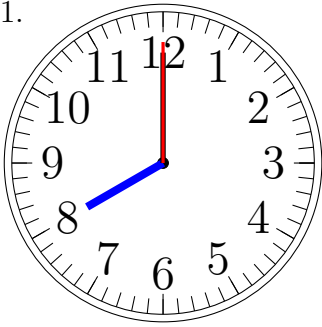


9:00:00

Place d'Aiguilles sur une Horloge Analogique (I) Solutions

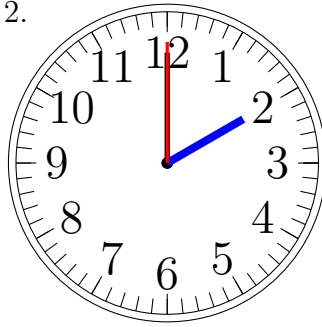
Placer les aiguilles de l'horloge pour qu'elles montrent le temps indiqué.

1.



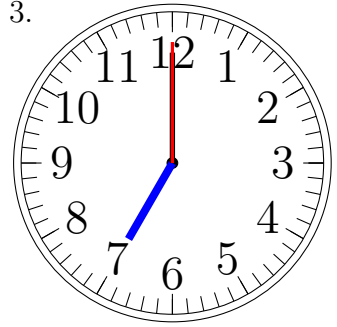
8:00:00

2.



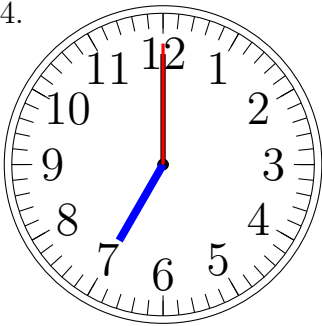
2:00:00

3.



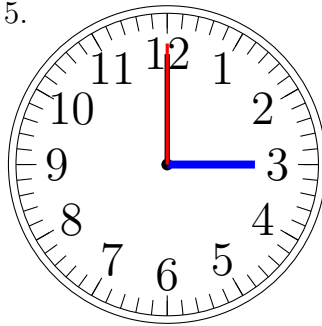
7:00:00

4.



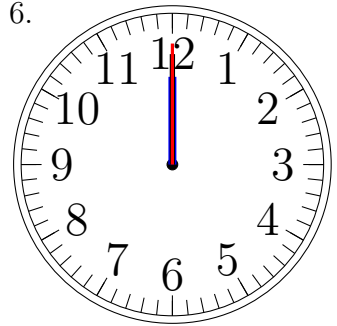
7:00:00

5.



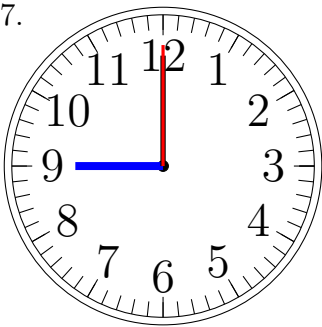
3:00:00

6.



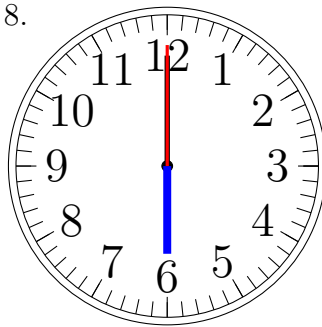
12:00:00

7.



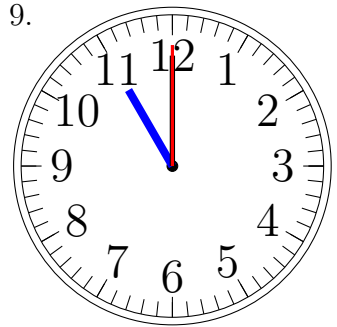
9:00:00

8.



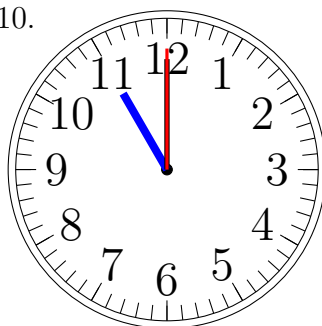
6:00:00

9.



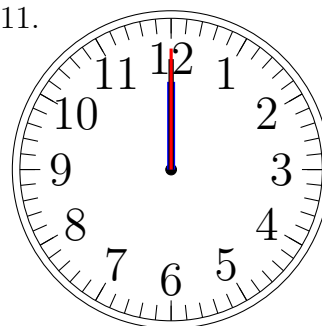
11:00:00

10.



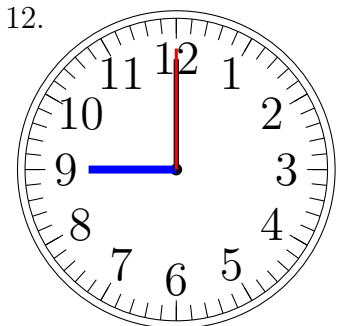
11:00:00

11.



12:00:00

12.

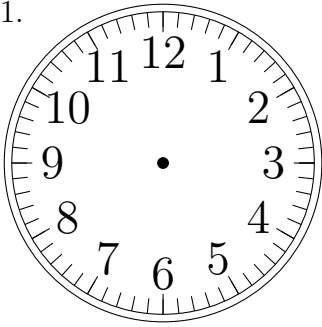


9:00:00

Place d'Aiguilles sur une Horloge Analogique (J)

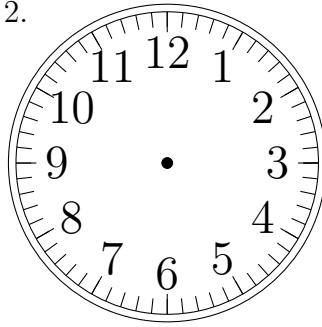
Placer les aiguilles de l'horloge pour qu'elles montrent le temps indiqué.

1.



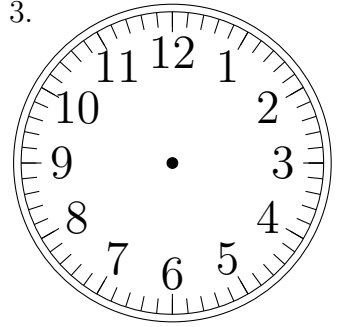
3:00:00

2.



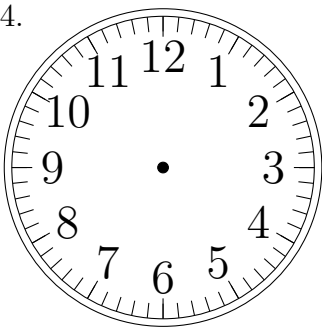
1:00:00

3.



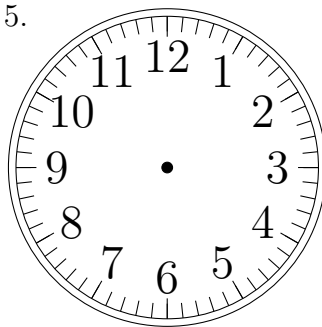
11:00:00

4.



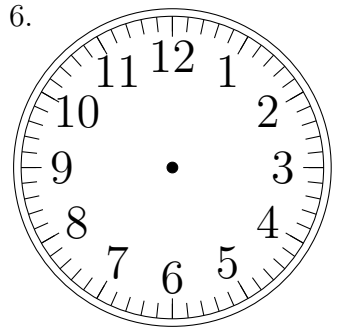
2:00:00

5.



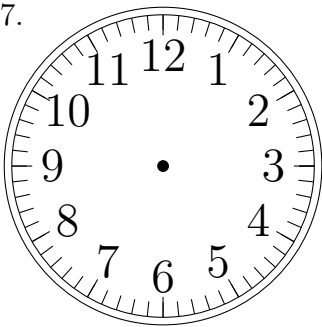
12:00:00

6.



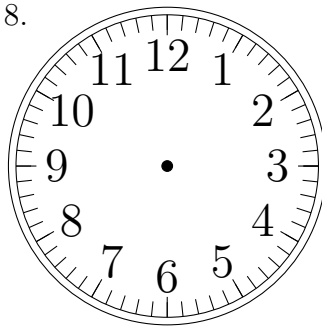
1:00:00

7.



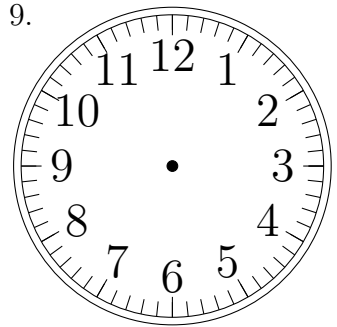
4:00:00

8.



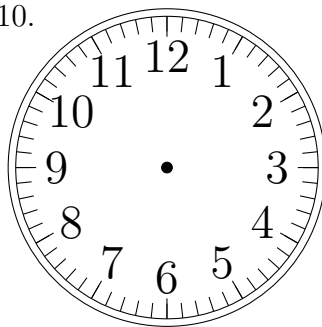
9:00:00

9.



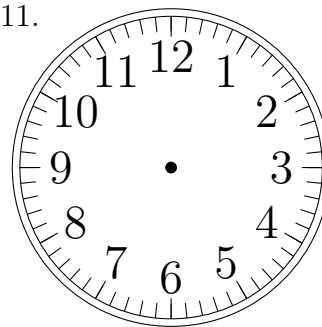
3:00:00

10.



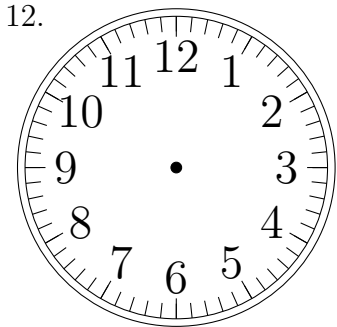
4:00:00

11.



7:00:00

12.

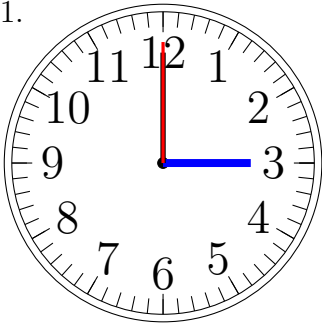


9:00:00

Place d'Aiguilles sur une Horloge Analogique (J) Solutions

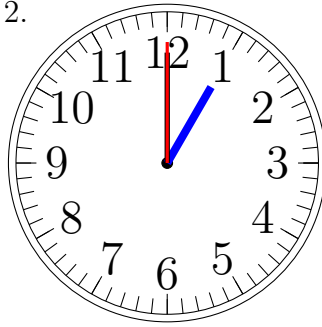
Placer les aiguilles de l'horloge pour qu'elles montrent le temps indiqué.

1.



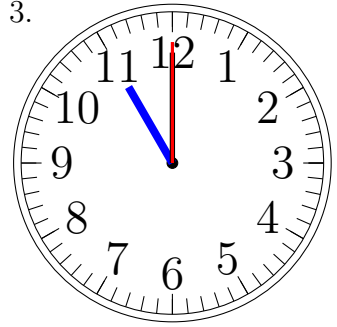
3:00:00

2.



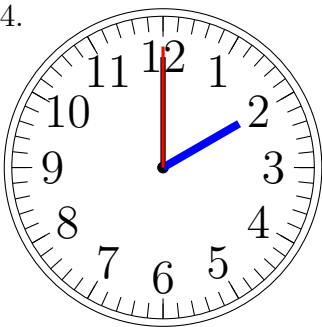
1:00:00

3.



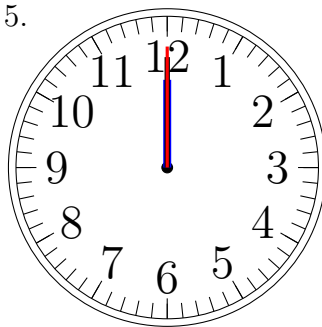
11:00:00

4.



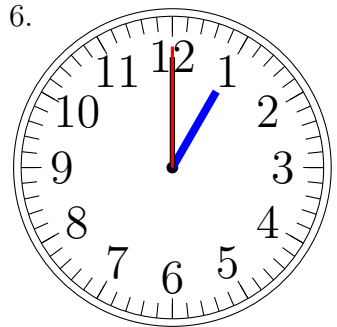
2:00:00

5.



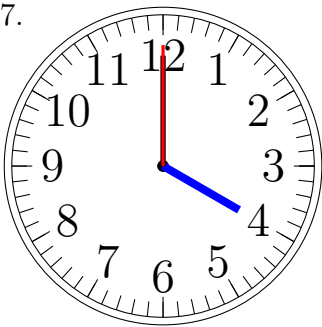
12:00:00

6.



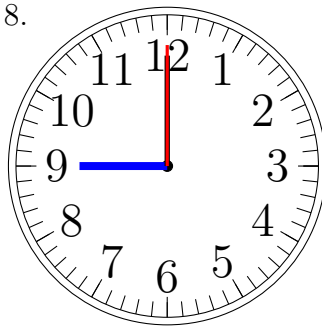
1:00:00

7.



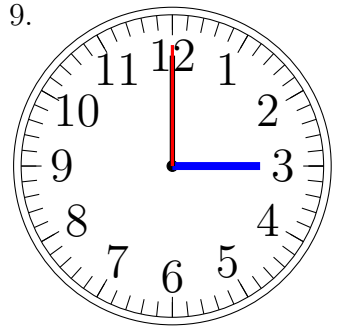
4:00:00

8.



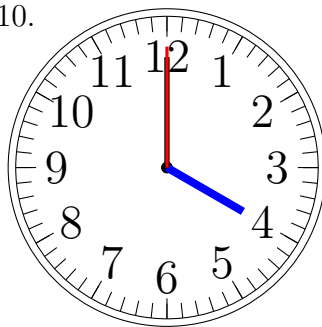
9:00:00

9.



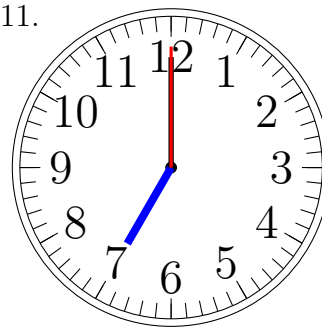
3:00:00

10.



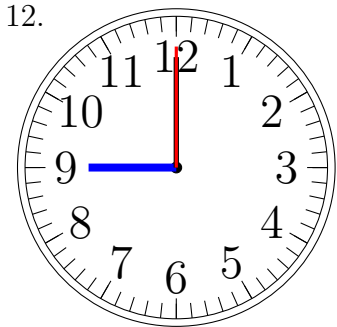
4:00:00

11.



7:00:00

12.



9:00:00