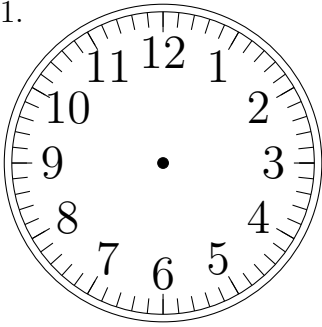


# Place d'Aiguilles sur une Horloge Analogique (I)

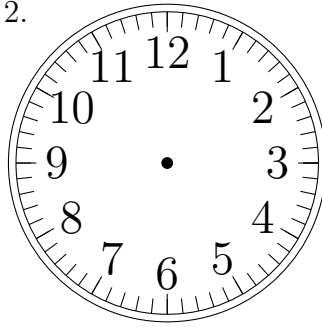
Placer les aiguilles de l'horloge pour qu'elles montrent le temps indiqué.

1.



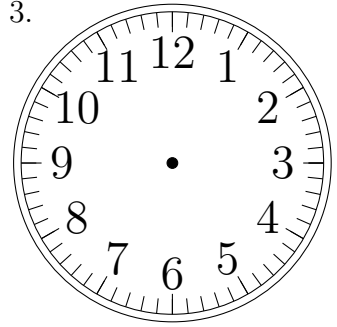
8:00:00

2.



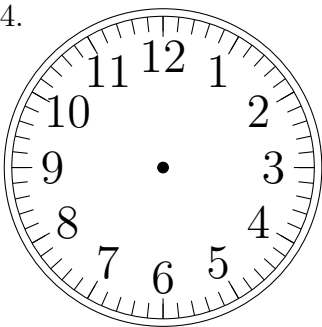
2:00:00

3.



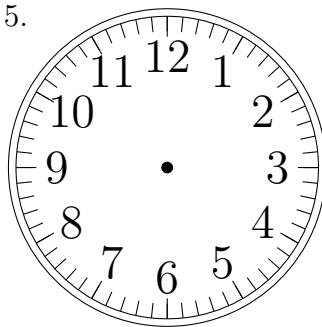
7:00:00

4.



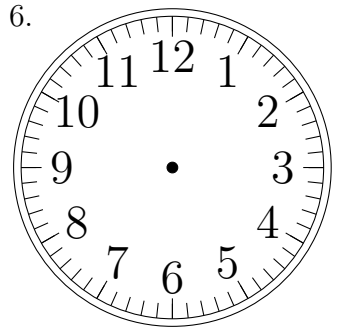
7:00:00

5.



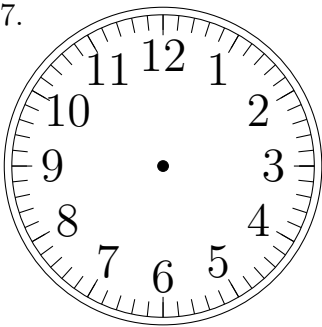
3:00:00

6.



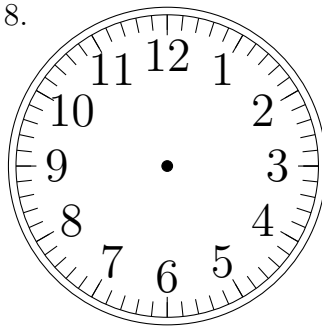
12:00:00

7.



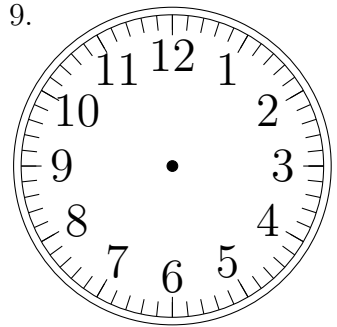
9:00:00

8.



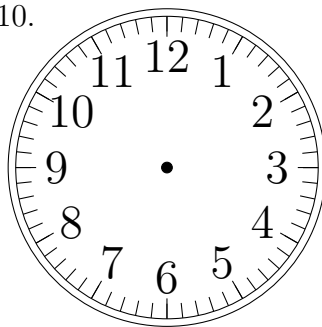
6:00:00

9.



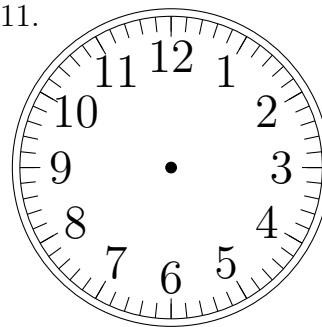
11:00:00

10.



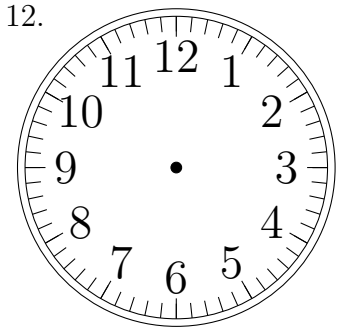
11:00:00

11.



12:00:00

12.

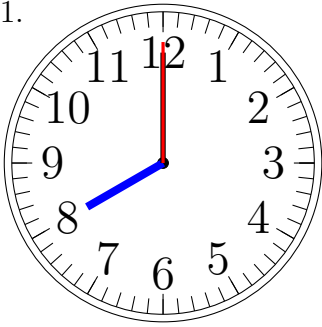


9:00:00

# Place d'Aiguilles sur une Horloge Analogique (I) Solutions

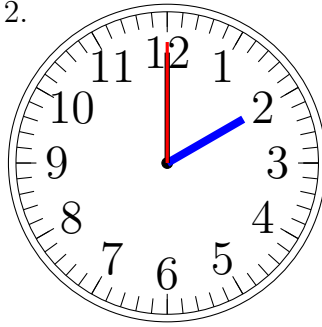
Placer les aiguilles de l'horloge pour qu'elles montrent le temps indiqué.

1.



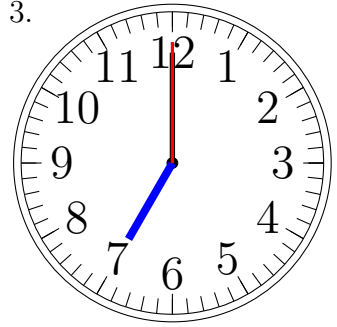
8:00:00

2.



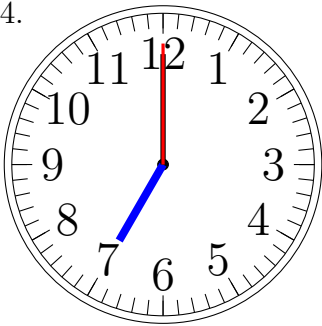
2:00:00

3.



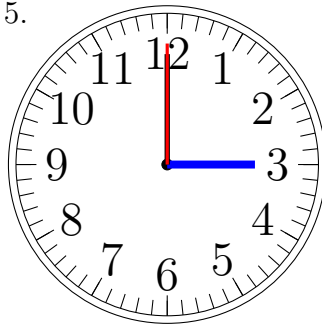
7:00:00

4.



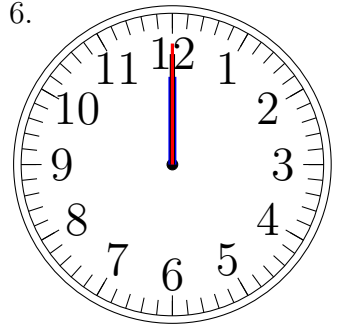
7:00:00

5.



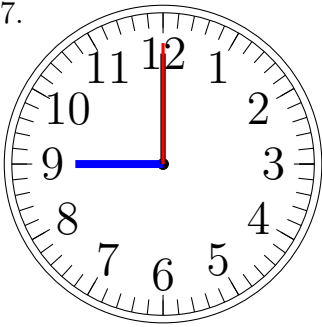
3:00:00

6.



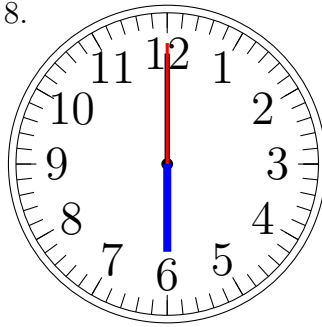
12:00:00

7.



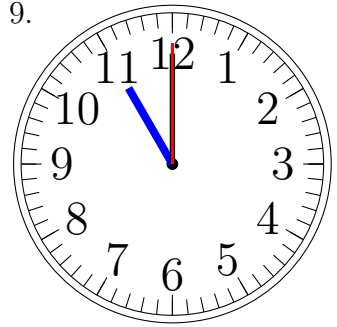
9:00:00

8.



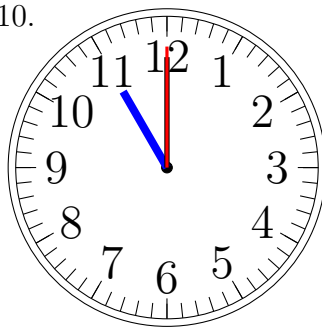
6:00:00

9.



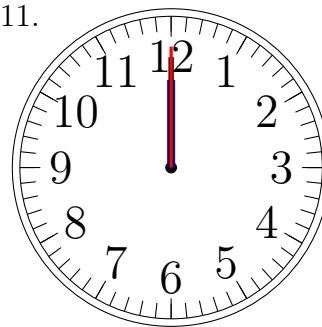
11:00:00

10.



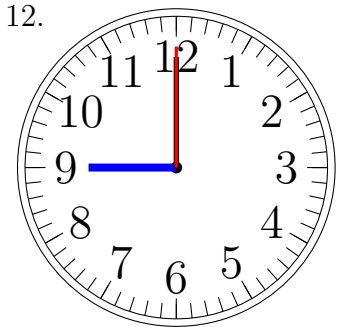
11:00:00

11.



12:00:00

12.



9:00:00